

BM #1: RR Spike on North Face of Power Pole approx. 1660' West of Ridge Road in South R/W of 37th St. N. Elev. = 1331.57

BM #2: "□" Cut Top of Curb Inlet on North Side of Northwind approx. 790' West of Ridge Road Elev. = 1331.06

BM #3: "□" Cut Top of Curb Inlet on North Side of Northwind approx. 290' West of Ridge Road Elev. = 1329.88

POPP, MICHAEL W. & ANN L

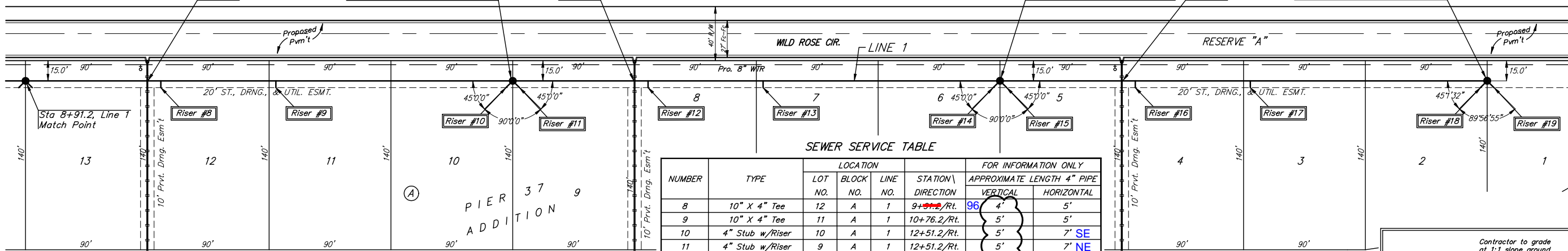
Scale: 1" = 40' Horizontal
1" = 5' Vertical
• = Iron

UNPLATTED

Sta 12+51.2, Line 1
Construct Std. Manhole
Rim Elev. = 1333.4
2 - 4" Stubs w/ Riser(SE,NE)

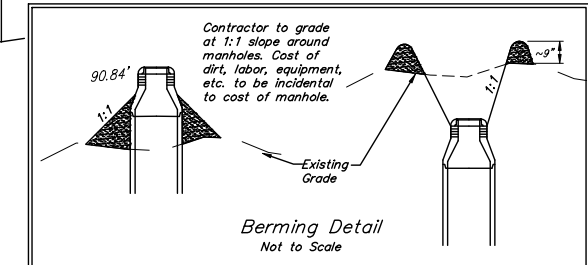
Sta 16+11.2, Line 1
Construct Std. Manhole
Rim Elev. = 1333.4
2 - 4" Stubs w/ Riser(SE,NE)

Sta 19+71.2, End Line 1
Construct Std. Manhole
Rim Elev. = 1334.1
2 - 4" Stubs w/ Riser(SE,NE)

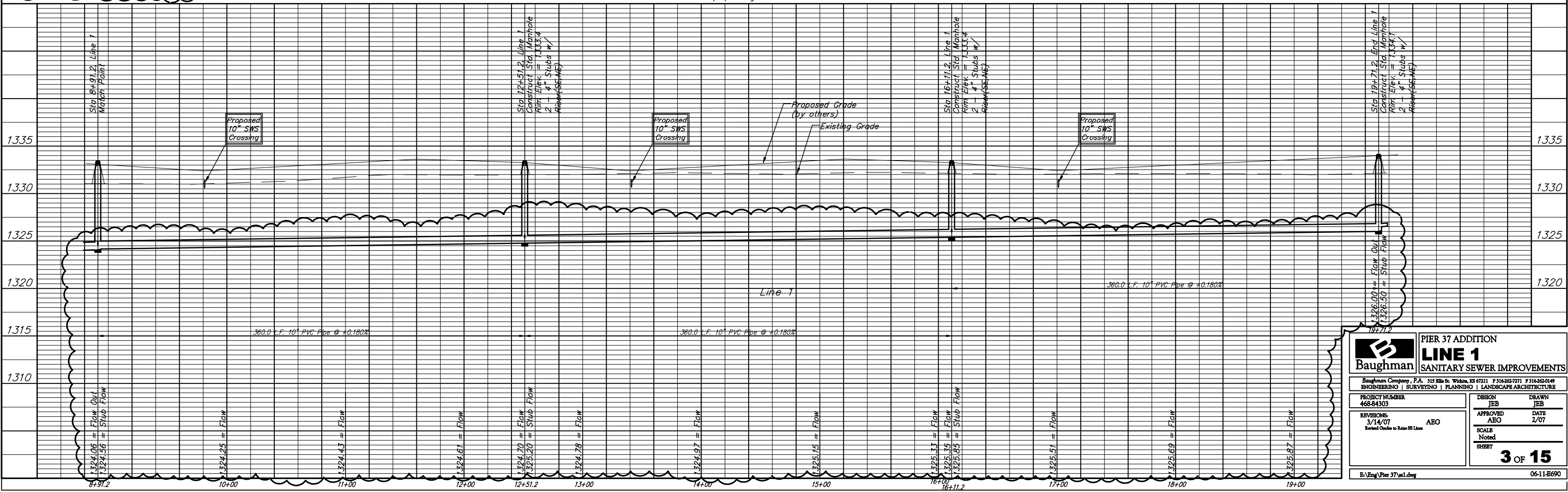


NUMBER	TYPE	LOCATION			FOR INFORMATION ONLY		
		LOT NO.	BLOCK NO.	LINE NO.	STATION DIRECTION	APPROXIMATE LENGTH 4" PIPE	
						VERTICAL	HORIZONTAL
8	10" X 4" Tee	12	A	1	9+90.2/Rt.	96'	4'
9	10" X 4" Tee	11	A	1	10+76.2/Rt.		5'
10	4" Stub w/Riser	10	A	1	12+51.2/Rt.		5'
11	4" Stub w/Riser	9	A	1	12+51.2/Rt.		7' SE
12	10" X 4" Tee	8	A	1	13+51.2/Rt.		5'
13	10" X 4" Tee	7	A	1	14+36.2/Rt.		4'
14	4" Stub w/Riser	6	A	1	16+11.2/Rt.		7' SE
15	4" Stub w/Riser	5	A	1	16+11.2/Rt.		7' NE
16	10" X 4" Tee	4	A	1	17+11.2/Rt.		4'
17	10" X 4" Tee	3	A	1	17+96.2/Rt.		5'
18	4" Stub w/Riser	2	A	1	19+71.2/Rt.		7' SE
19	4" Stub w/Riser	1	A	1	19+71.2/Rt.		7' NE

NOTE: Vertical Riser Pipe shall be extended to 2' minimum above ground water elevation and 4' maximum below proposed ground elevation.



All trench and manhole excavation areas from Sta. 2+23.6 to Sta. 19+71.2, Line 1 shall be backfilled with sand. The sand backfill shall be within two feet of existing grade and shall be water-jetted and vibrated during backfilling. On-site sand may be used for backfill.



Baughman ENGINEERING | SURVEYING | PLANNING | LANDSCAPE ARCHITECTURE

PIER 37 ADDITION
LINE 1
SANITARY SEWER IMPROVEMENTS

PROJECT NUMBER: 468-84303
DESIGN: JEB
DRAWN: JEB
APPROVED: AEG
DATE: 2/07
SCALE: Noted
SHEET: 3 OF 15

Revisions:
3/14/07 AEG
Vertical Grades to Riser 05 Lines

Scale: 1" = 40' Horizontal, 1" = 5' Vertical