

BM #1: RR Spike on North Face of Power Pole approx. 1660' West of Ridge Road in South R/W of 37th St. N. Elev. = 1331.57

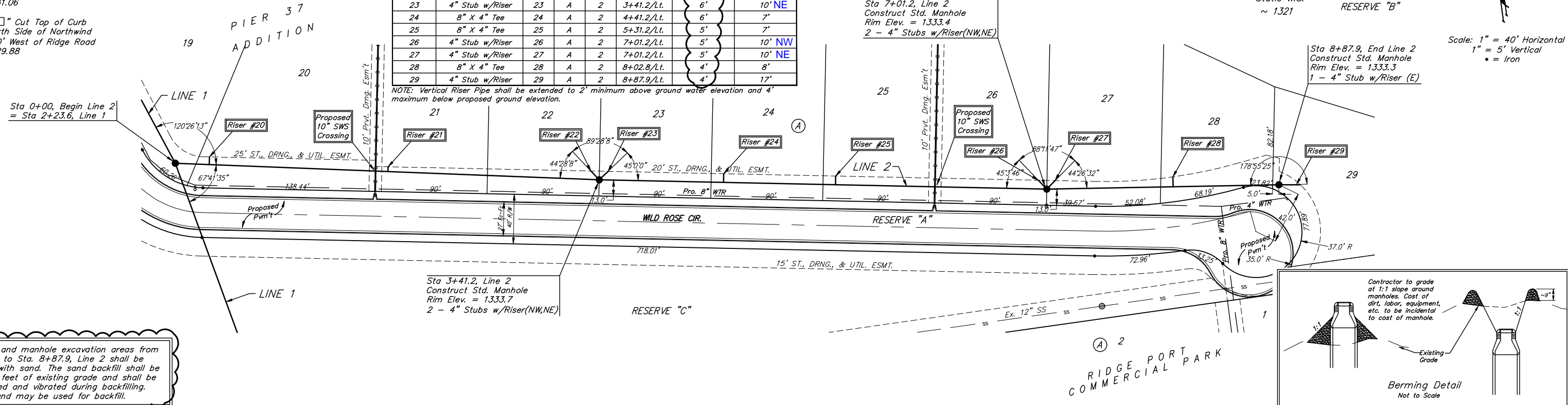
BM #2: "□" Cut Top of Curb Inlet on North Side of Northwind approx. 790' West of Ridge Road Elev. = 1331.06

BM #3: "□" Cut Top of Curb Inlet on North Side of Northwind approx. 290' West of Ridge Road Elev. = 1329.88

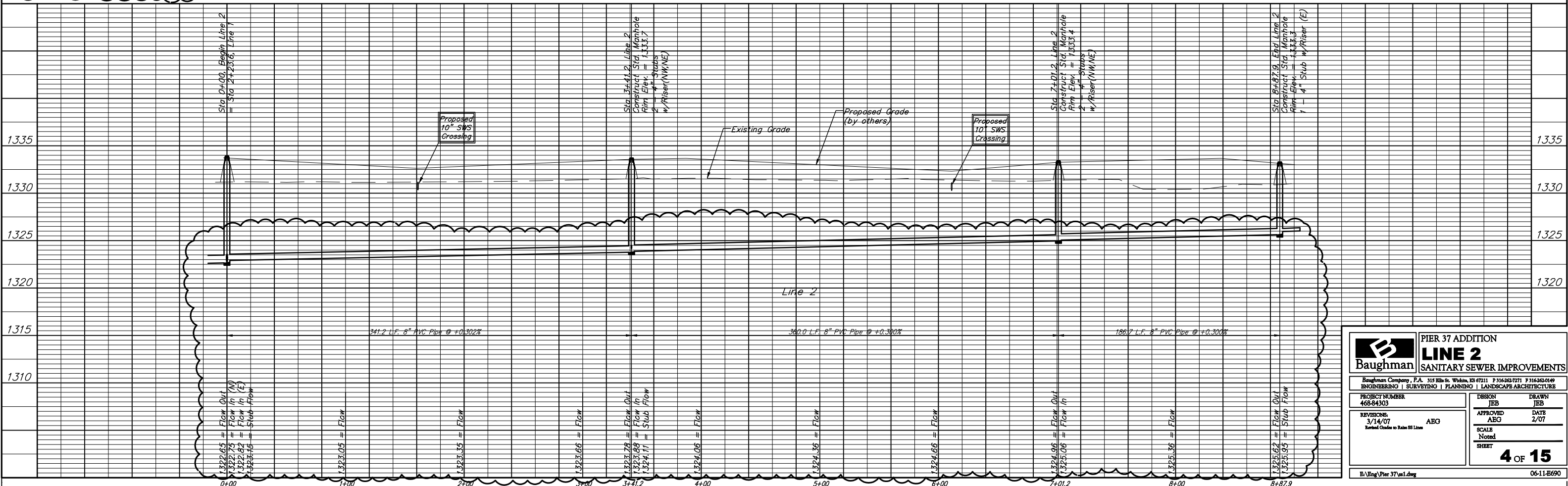
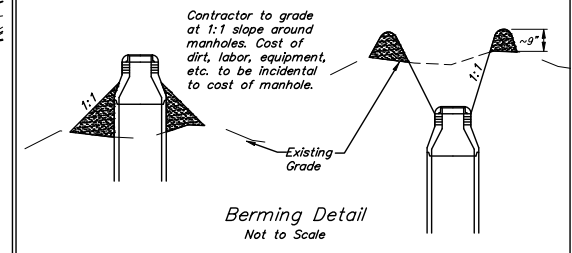
SEWER SERVICE TABLE

NUMBER	TYPE	LOCATION				FOR INFORMATION ONLY	
		LOT NO.	BLOCK NO.	LINE NO.	STATION \ DIRECTION	APPROXIMATE LENGTH 4" PIPE	VERTICAL
20	8" X 4" Tee	20	A	2	0+27.3/Lt.	6'	6'
21	8" X 4" Tee	21	A	2	1+71.1/Lt.	6'	4'
22	4" Stub w/Riser	22	A	2	3+41.2/Lt.	6'	10' NW
23	4" Stub w/Riser	23	A	2	3+41.2/Lt.	6'	10' NE
24	8" X 4" Tee	24	A	2	4+41.2/Lt.	6'	7'
25	8" X 4" Tee	25	A	2	5+31.2/Lt.	5'	7'
26	4" Stub w/Riser	26	A	2	7+01.2/Lt.	5'	10' NW
27	4" Stub w/Riser	27	A	2	7+01.2/Lt.	5'	10' NE
28	8" X 4" Tee	28	A	2	8+02.8/Lt.	4'	8'
29	4" Stub w/Riser	29	A	2	8+87.9/Lt.	4'	17'

NOTE: Vertical Riser Pipe shall be extended to 2' minimum above ground water elevation and 4' maximum below proposed ground elevation.



All trench and manhole excavation areas from Sta. 0+00 to Sta. 8+87.9, Line 2 shall be backfilled with sand. The sand backfill shall be within two feet of existing grade and shall be water-jetted and vibrated during backfilling. On-site sand may be used for backfill.



Baughman PIER 37 ADDITION
LINE 2
SANITARY SEWER IMPROVEMENTS

Engineering | Surveying | Planning | Landscape Architecture

PROJECT NUMBER: 468-84303
DESIGN: JEB
DRAWN: JEB

REVISIONS: 3/14/07 AEG
APPROVED: AEG
DATE: 2/07

SCALE: Noted
SHEET: 4 OF 15

File: Eng\Pier 37\w1.dwg 06-11-E690