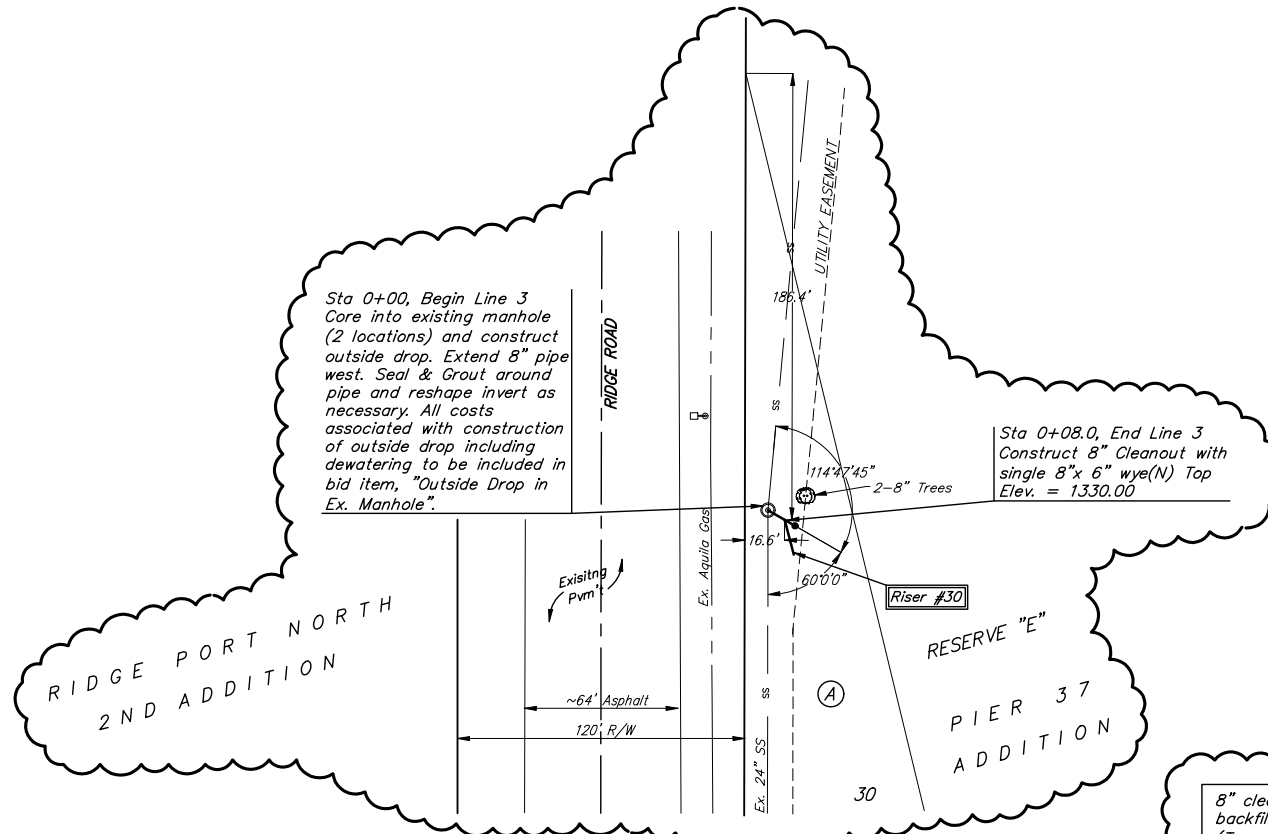


BM #1: RR Spike on North Face of Power Pole approx. 1660' West of Ridge Road in South R/W of 37th St. N.
Elev. = 1331.57

BM #2: "□" Cut Top of Curb Inlet on North Side of Northwind approx. 790' West of Ridge Road
Elev. = 1331.06

BM #3: "□" Cut Top of Curb Inlet of North Side of Northwind approx. 290' West of Ridge Road
Elev. = 1329.88

Scale: 1" = 40' Horizontal
1" = 5' Vertical
• = Iron



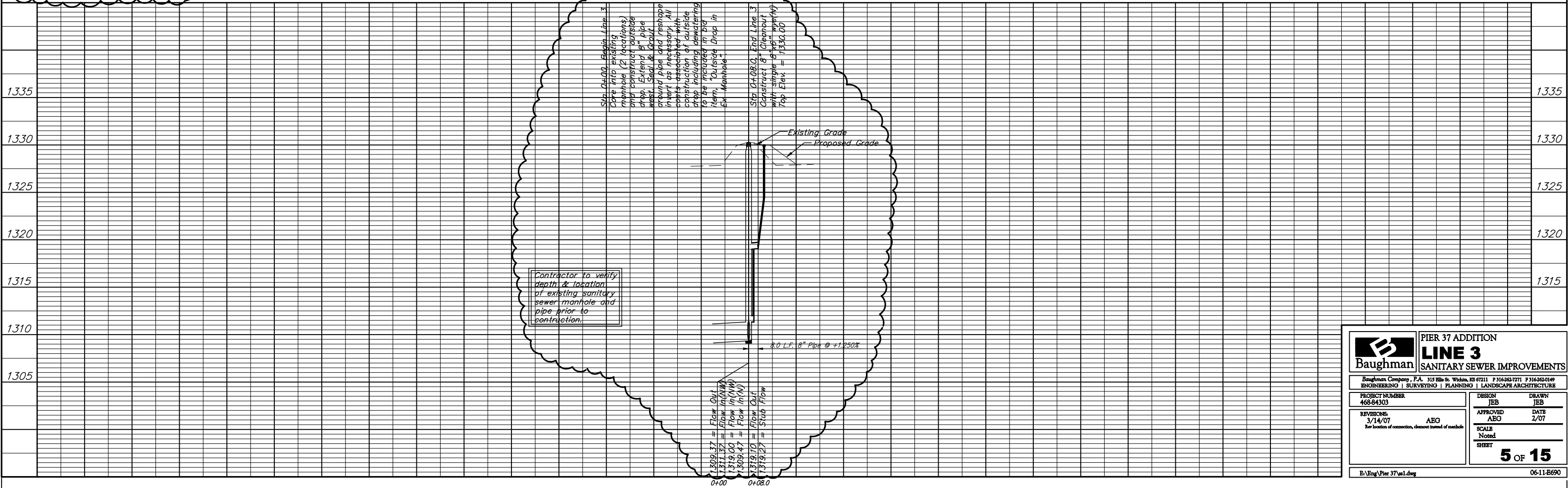
Remove trees only as necessary for sanitary sewer line construction and only with permission of Developer or Baughman Co. Side trimming of trees may be required. Trees that must be trimmed shall be side trimmed with a chainsaw. Cost of trimming and/or removal to be incidental to lump sum bid item "Site Clearing & Restoration".

8" cleanout may be backfilled with crushed rock (Type 1 Pipe Bedding Material) per City Specs.

SEWER SERVICE TABLE

NUMBER	TYPE	LOCATION				FOR INFORMATION ONLY	
		LOT NO.	BLOCK NO.	LINE NO.	STATION \ DIRECTION	APPROXIMATE LENGTH 4" PIPE	VERTICAL
30	6" Riser	30	A	3	0+8.0	7'	15'

NOTE: Vertical Riser Pipe shall be extended to 2' minimum above ground water elevation and 4' maximum below proposed ground elevation.



Baughman PIER 37 ADDITION
LINE 3
SANITARY SEWER IMPROVEMENTS

Baughman Company, P.A. 315 Ellis St. Wichita, KS 67211 P 316-262-7771 F 316-262-0149
ENGINEERING | SURVEYING | PLANNING | LANDSCAPE ARCHITECTURE

PROJECT NUMBER 468-84303	DESIGN JEB	DRAWN JEB
REVISIONS: 3/14/07 AEG See location of connection, cleanout instead of manhole	APPROVED AEG	DATE 2/07
SCALE Noted		SHEET 5 OF 15

E:\Eng\Pier 37\w1.dwg 06-11-E690