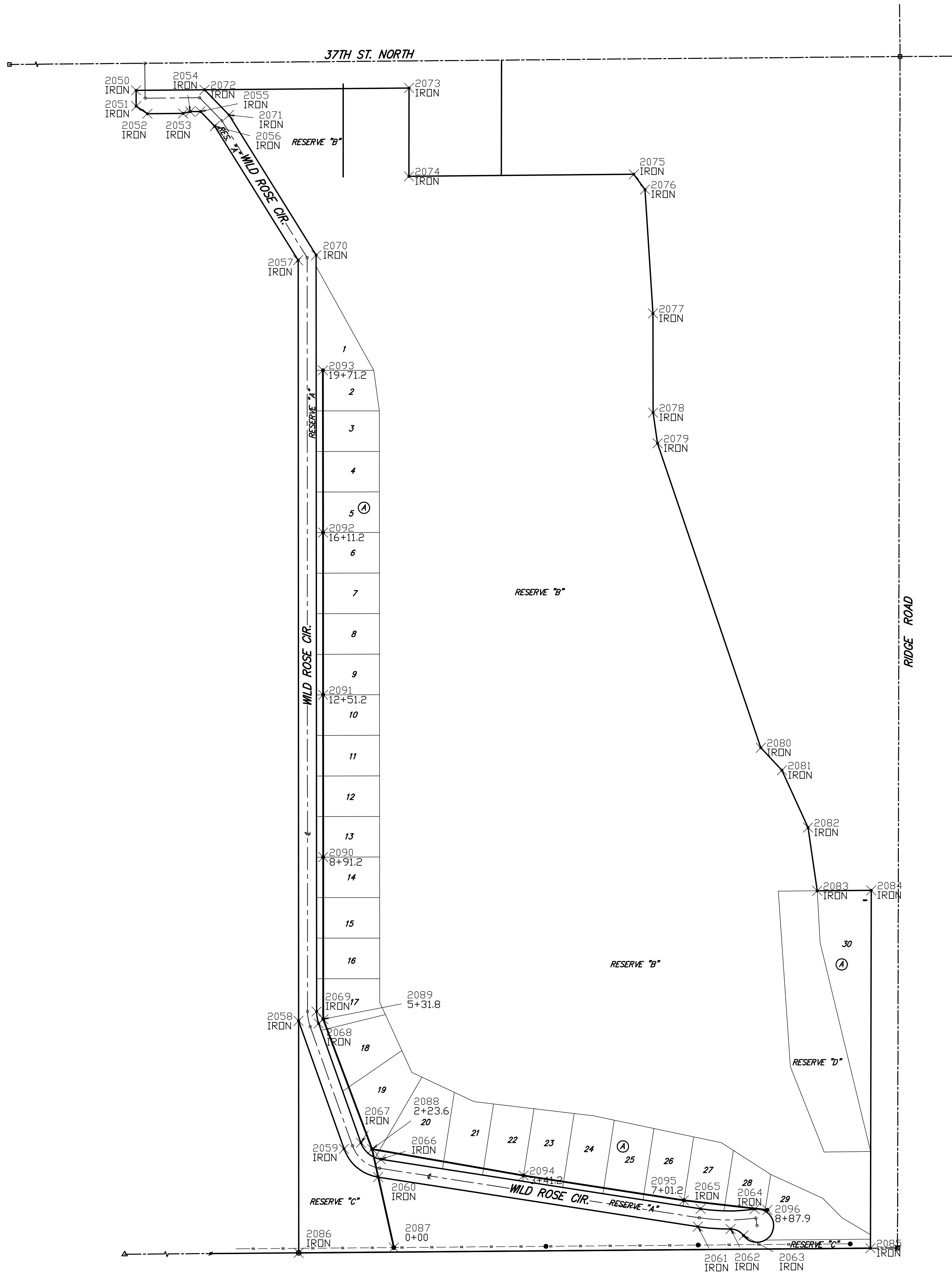
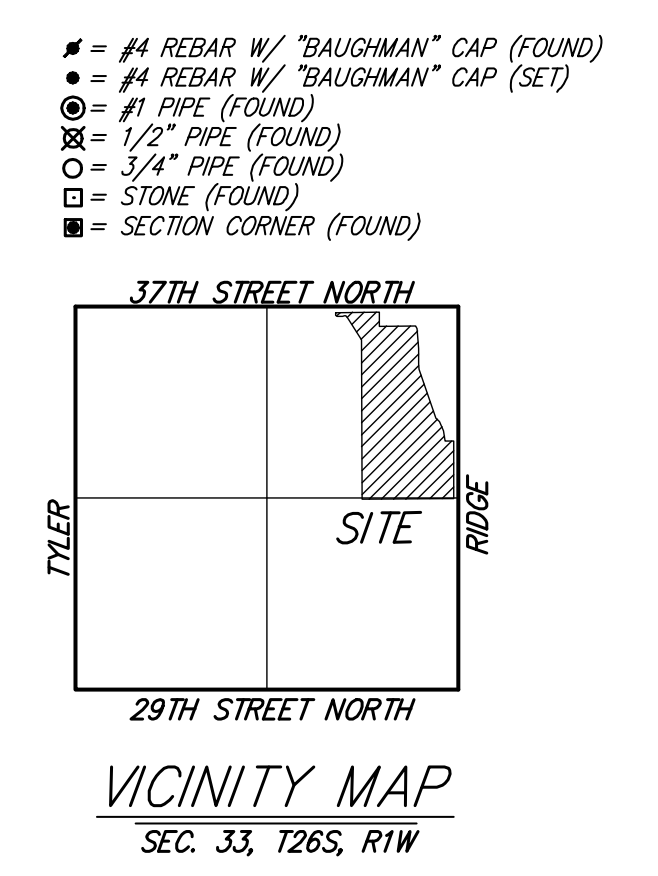
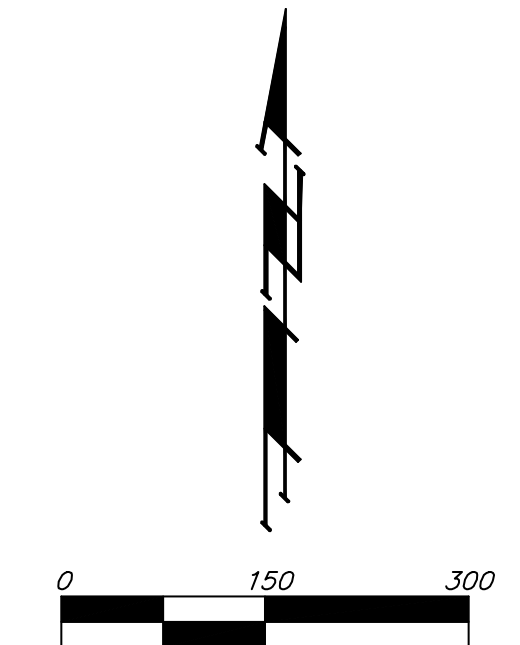


SANITARY SEWER COORDINATE SHEET PIER 37 ADDITION WICHITA, SEDGWICK COUNTY, KANSAS



PT#	NORTHING	EASTING	DESC
2050	30077.0277	43593.8090	"IRON"
2051	30042.0291	43594.1211	"IRON"
2052	30025.2183	43618.9784	"IRON"
2053	30025.9236	43698.0935	"IRON"
2054	30030.0596	43714.0249	"IRON"
2055	30030.2617	43736.6900	"IRON"
2056	29997.6350	43768.4276	"IRON"
2057	29700.2347	43953.4781	"IRON"
2058	28012.9065	43954.3224	"IRON"
2059	27728.8817	44055.1200	"IRON"
2060	27666.1199	44130.9008	"IRON"
2061	27556.2417	44840.4616	"IRON"
2062	27550.9973	44913.1562	"IRON"
2063	27536.6294	44941.7655	"IRON"
2064	27595.0669	44966.4221	"IRON"
2065	27595.7705	44846.5828	"IRON"
2066	27705.6487	44137.0220	"IRON"
2067	27742.2598	44092.8165	"IRON"
2068	28006.8623	43998.9117	"IRON"
2069	29711.6725	43993.4724	"IRON"
2071	30078.3817	43745.6844	"IRON"
2073	30082.4291	44199.6926	"IRON"
2074	29886.4302	44199.2694	"IRON"
2075	29890.8785	44698.2094	"IRON"
2076	29857.1721	44723.2277	"IRON"
2077	29582.1368	44740.8602	"IRON"
2078	29362.1370	44741.1755	"IRON"
2079	29294.1236	44751.0745	"IRON"
2080	28618.8178	44980.1770	"IRON"
2081	28568.7565	45027.1086	"IRON"
2082	28441.6762	45084.9388	"IRON"
2083	28301.2865	45105.2406	"IRON"
2084	28302.2735	45225.2365	"IRON"
2085	27508.5061	45223.5224	"IRON"
2086	27498.0966	43954.5703	"IRON"
2087	27509.7904	44165.7812	"0+00"
2088	27728.1694	44117.5871	"2+23.6"
2089	28016.6659	44009.2909	"5+31.8"
2090	28376.0552	44009.0952	"8+91.2"
2091	28736.0552	44008.8992	"12+51.2"
2092	29096.0551	44008.7031	"16+11.2"
2093	29456.0551	44008.5071	"19+71.2"
2094	27669.7387	44453.7013	"3+41.2"
2095	27614.6652	44809.4637	"7+01.2"
2096	27593.4100	44994.9100	"8+87.9"



PIER 37 ADDITION	
STAKING COORDINATE SHEET	
SANITARY SEWER IMPROVEMENTS	
Baughman Company, P.A. 315 Ellis St. Wichita, KS 67111 F 3163627171 F 3163630449 ENGINEERING SURVEYING PLANNING LANDSCAPE ARCHITECTURE	
PROJECT NUMBER 468-84303	DESIGN JEB DRAWN JEB
REVISIONS:	APPROVED AEG DATE 2/07
	SCALE Noted SHEET
14 OF 15	
F:\STAKE\Pier 37 Addition\sscoords.DWG	