

# PRIVATE STREET PAVING FOR WILD ROSE CIR. WITH INCIDENTAL STORM SEWER IMPROVEMENTS

to serve

## PIER 37 ADDITION

Wild Rose Cir., from 37th St. N.  
 thru Cul-de-Sac to Northwind

### CITY OF WICHITA, KANSAS

James L. Armour, P.E. City Engineer

Project Number

**180 PPP**

O.C.A. Number:

**607879**

As Built Plans  
 Contractor: Lafarge  
 Inspector: Lyle Powers, Baughman Co.  
 pdf by: KEK, 10/30/07

### SHEET INDEX

Title Sheet	1
28' Pavement Detail	2-3
Entrance Detail	4
Sign Detail	5
Miscellaneous Details	6
Wild Rose Cir.	7-15
Line 1	16
Lines 2 & 3	17
Lines 4 & 5	18
Lines 6 & 7	19
Line 8	20
Std. Type 1A Single Inlet Detail	21
12" Drain Basin & Grate Detail	22
Erosion Control Plan	23
Erosion Control BMPs	24-27
Standard Drive Entrance Detail	28
Street X-Sections	29-35
Copy of Pier 37 Plat	36

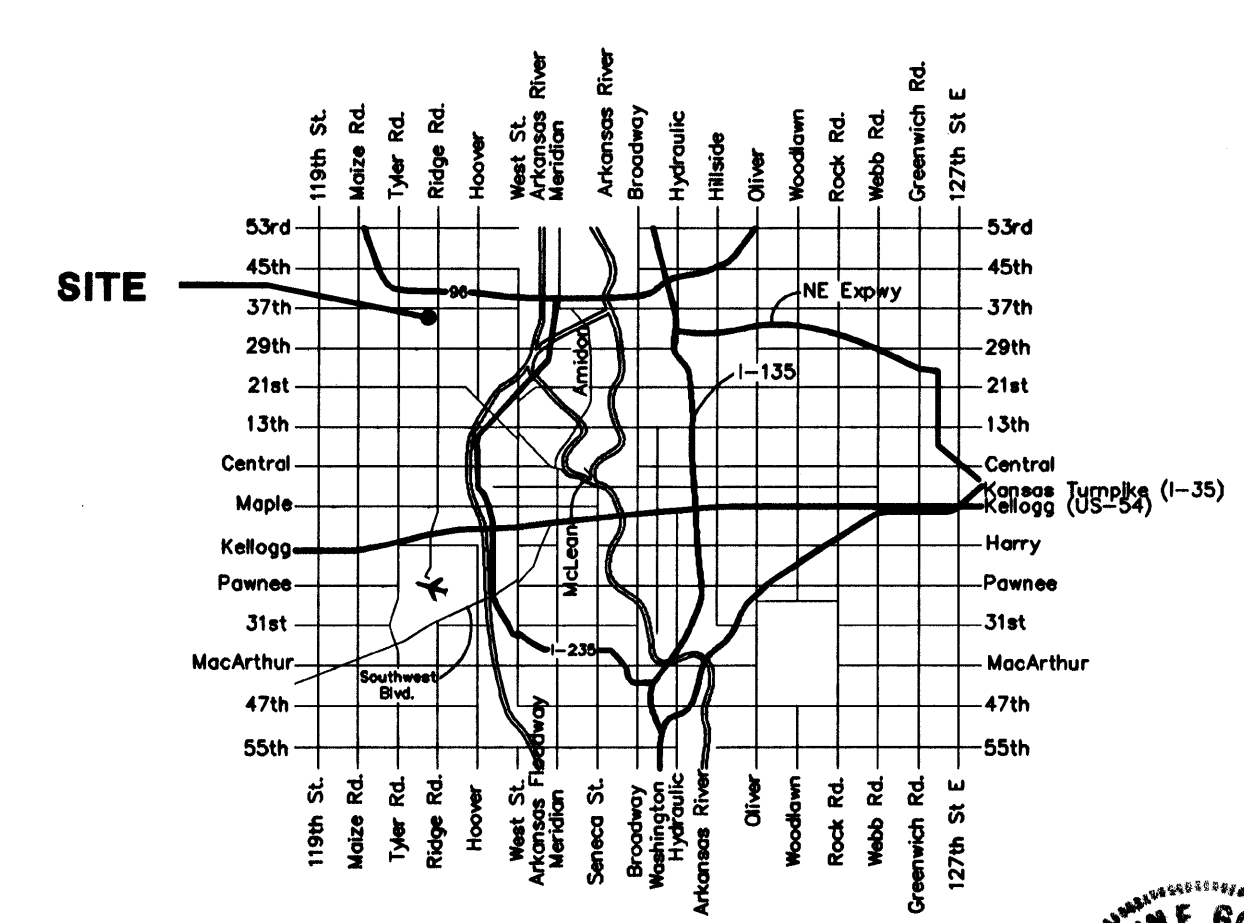
### GENERAL NOTES:

- Contractor will be required to provide notice to utility companies a minimum of forty-eight (48) hours prior to any excavation, as follows:  
 Kansas One-Call 687-2470  
 The Contractor must notify the following in case of an emergency:  
 Cox Communications 262-4270  
 Kansas Gas Service 1-888-482-4900  
 Westar Energy 383-8650  
 Aquila Energy 1-800-303-0357  
 AT&T 268-2245  
 City of Wichita Water Dept. 268-4563  
 City of Wichita Sewer Maint. 268-4024  
 City of Wichita Storm Sewer Maint. 268-4090  
 City of Wichita Traffic Maint. 268-4034  
 Conoco Phillips Pipeline Co. 1-877-267-2290  
 Southern Star Pipeline Co. 529-6000  
 Kinder-Morgan Pipeline Co. 1-888-844-5658  
 Enbridge Pipeline 1-800-323-6241
- Utility service lines, poles, valve boxes, meters, and etcetera are to be adjusted as necessary by others prior to construction unless the plans specifically call for their adjustment by the Contractor or unless the plans specifically identify a utility to be adjusted by its owner during construction. Existing utilities and their location, as shown on the plans, represent the best information obtainable for design. The Contractor will be required to work around existing utilities within the right-of-way which do not conflict with proposed construction.
- Rubble from the removal of miscellaneous structures and excess excavation which is to be wasted shall be disposed of on sites to be provided by the Contractor. These sites shall be approved by the Engineer as to suitability, appearance and site location. Locations, in the opinion of the Engineer, that will leave an unsightly appearance will not be approved. All disposal sites must be approved by the Kansas Department of Health and Environment. Material either stockpiled or disposed of in a flood plain would require a Kansas State Board of Agriculture permit. Any material dumped in waters of the United States or wetlands is subject to U.S. Corps of Engineers permitting regulations. Any material buried or stockpiled beyond approved construction limits would require additional archaeological investigations unless buried in a previously approved borrow location.
- Trees and shrubs in public right-of-way which are in direct conflict with proposed new construction shall be removed by the Contractor with the Engineer's approval. Trees and shrubs which are not in direct conflict with proposed new construction shall be saved and protected from damage.
- The Contractor shall give all property owners and/or tenants of developed property abutting the construction of this project a minimum of ten (10) days notice prior to start of construction.
- The Contractor shall be responsible for preserving property irons. The Contractor will be required to re-establish any property irons which are damaged or destroyed by his construction operations. Such irons shall be re-established by a licensed land surveyor in accordance with state laws.
- All existing and proposed erosion control measures including silt fencing, erosion control mat, straw bales, inlet barriers, and const. entrance shall be maintained throughout construction by the contractor and until project is accepted by the City of Wichita. The on-site engineer shall complete weekly reports on the status of erosion control measures. The contractor shall be required to comply with maintenance and/or replacement of erosion control measures as determined by the on-site engineer until project is accepted by the developer.
- Any excess excavation shall remain on-site and shall be stockpiled or spread at a location determined by the engineer.
- A saw cut of at least one-half the depth of existing surface courses or one-fourth the depth of the existing total pavement thickness shall be provided at locations where proposed construction abuts the existing surface course or pavement for which partial removal of that surface or pavement is required. Sawed joint to facilitate removal within three (3) feet of existing joints will not be permitted and for such instances the limits of removal shall extend to the existing joint. Such saw cuts will not be paid for directly and this cost shall be considered as subsidiary to the removal of the surface or pavement.
- The contractor shall adjust valve boxes as necessary to match proposed grade. Cost to be included in bid item, "Site Clearing & Restoration."
- All areas disturbed within Popp property, 37th St. N. street r/w, and Northwind street r/w during construction shall be seeded, fertilized, and mulched at the specified rates following construction in that area.  
 Seed: Kansas Premium Fescue Blend: 8 lbs./1000 sq. ft.  
 Mulch: Prairie Hay: 2 tons/acre  
 Fertilizer: 12-24-12: 850 lbs./acre  
 All other areas disturbed during construction shall be seeded at 300 lbs./acre with Rye Grass immediately following construction in that area.  
 All costs associated with seeding, mulching, and fertilizing shall be included in bid item "Project Seeding." All seeding operations shall conform to City of Wichita Standard Specifications.
- The developer for this project is Jay Russell, (316) 722-2417
- The contractor shall use caution operating heavy equipment over/around plastic inlets and pvc pipe.

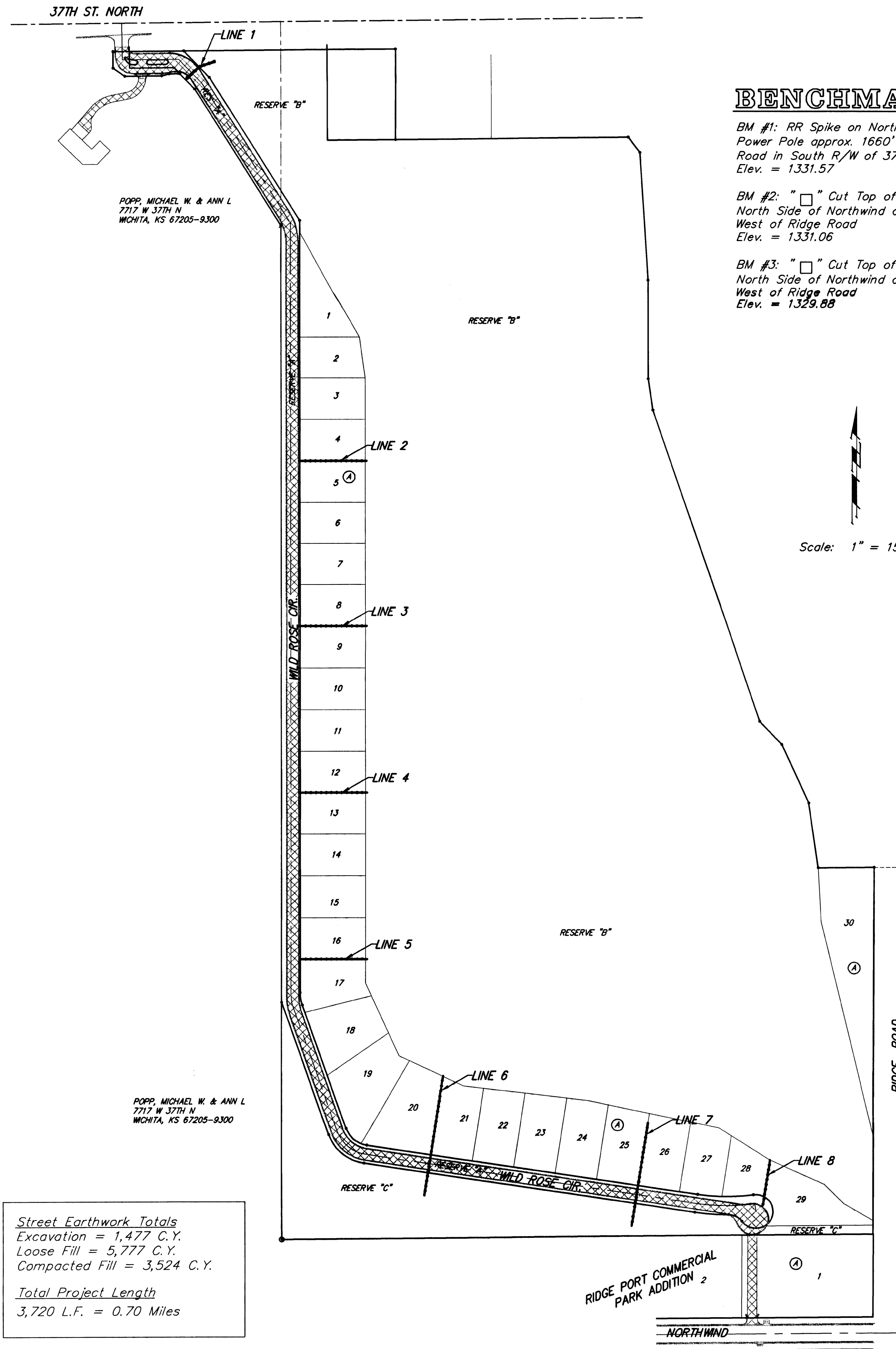
APPROVED AS NOTED  
 BY CITY ENGINEER OF WICHITA

Storm Sewers VRH 5/1/07  
 Paving VRH 5/1/07

NOTE TO CONTRACTORS  
 Installation, inspection and testing for this project is to be provided by a Licensed Consulting Engineering Firm under contract with the Owner/Developer. Said Inspection to be in accordance with the City of Wichita standard construction engineering practices and certified by a Licensed Professional Engineer. No work shall be performed in dedicated easements or public right-of-way by the Contractor without such inspection nor shall any work be commenced without written authorization by the City Engineer. All Construction and Materials shall comply with the City of Wichita Specifications and Standards (on file and available in the City Engineer's Office).



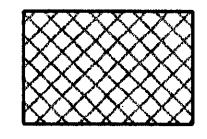
Vicinity Map



Street Earthwork Totals  
 Excavation = 1,477 C.Y.  
 Loose Fill = 5,777 C.Y.  
 Compacted Fill = 3,524 C.Y.

Total Project Length  
 3,720 L.F. = 0.70 Miles

Proposed Streets/Paving:



Baughman Company, P.A. 315 Ellis St. Wichita, KS 67211 P 316-262-7271 F 316-262-0145  
 ENGINEERING | SURVEYING | PLANNING | LANDSCAPE ARCHITECTURE