

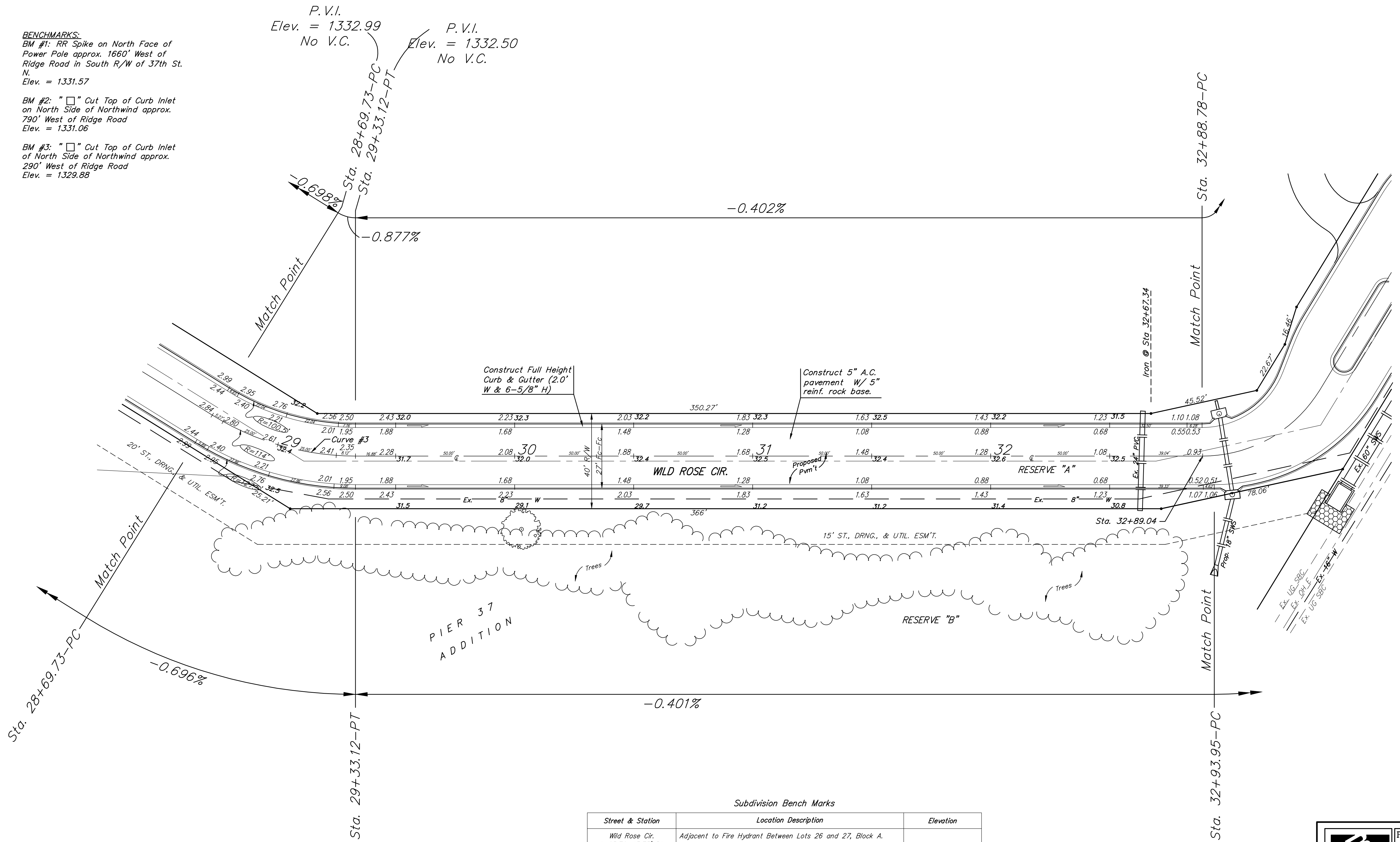
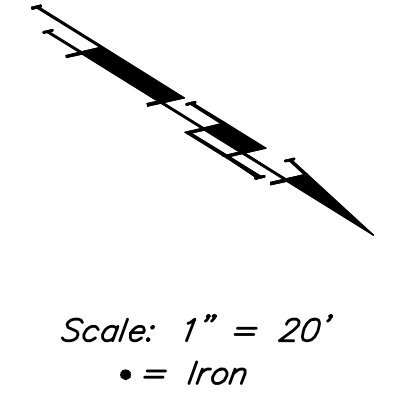
BENCHMARKS:
 BM #1: RR Spike on North Face of Power Pole approx. 1660' West of Ridge Road in South R/W of 37th St. N.
 Elev. = 1331.57

BM #2: "□" Cut Top of Curb Inlet on North Side of Northwind approx. 790' West of Ridge Road
 Elev. = 1331.06

BM #3: "□" Cut Top of Curb Inlet of North Side of Northwind approx. 290' West of Ridge Road
 Elev. = 1329.88

P.V.I.
 Elev. = 1332.99
 No V.C.

P.V.I.
 Elev. = 1332.50
 No V.C.



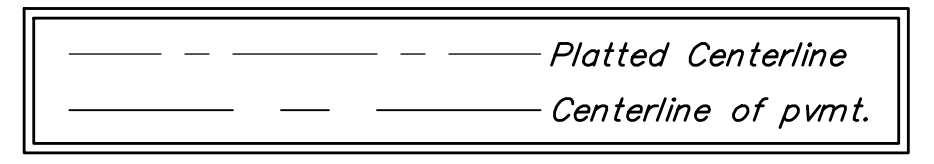
Curve #3
 Curve Data Based on Centerline
 Rad. = 114' Delta = 31° 51' 43" Tangent = 32.54'
 Arc = 63.39' L.C. = 62.58' Def/Fl. = 15.07901 Min.

Station	Arc	FACE CHORD LENGTHS		Defl.	T. Defl.
		8' Lt.	8' Rt.		
28+69.73	-	-	-	0°00'00"	0°00'00"
28+75.00	5.27'	4.28'	6.26'	1°19'28"	1°19'28"
29+00.00	25.00'	20.25'	29.66'	6°16'58"	7°36'26"
29+25.00	25.00'	20.25'	29.66'	6°16'58"	13°53'25"
29+33.12	8.12'	6.59'	9.65'	2°02'26"	15°55'51"

P.V.I.
 Elev. = 1332.50
 No V.C.

Subdivision Bench Marks

Street & Station	Location Description	Elevation
Wild Rose Cir. 1+65.76, 13.75' Rt.	Adjacent to Fire Hydrant Between Lots 26 and 27, Block A.	
Wild Rose Cir. 8+52.63, 13.75' Rt.	Adjacent to Fire Hydrant near the SW Corner of Lot 20, Block A.	
Wild Rose Cir. 16+67.67, 13.75' Rt.	Adjacent to Fire Hydrant near the NW Corner of Lot 13, Block A.	
Wild Rose Cir. 23+87.62, 13.75' Rt.	Adjacent to Fire Hydrant near the NW Corner of Lot 5, Block A.	



Baughman		PIER 37 ADDITION	
		Wild Rose Cir.	
		STA 28+69.73 TO STA 32+93.09	
Baughman Company, P.A. 315 Ella St. Waltham, MA 02451 P 316-262-7171 F 316-262-0149			
ENGINEERING SURVEYING PLANNING LANDSCAPE ARCHITECTURE			
PROJECT NUMBER	DESIGN	DRAWN	
	JEB	JEB	TMS
REVISIONS:	APPROVED	DATE	
	AEG	04/07	
	SCALE	Noted	
	SHEET	14 OF 36	
E:\Eng\Pier 37\STR1.dwg		06-11-09	