

BENCHMARKS:
 BM #1: RR Spike on North Face of Power Pole approx. 1660' West of Ridge Road in South R/W of 37th St. N. Elev. = 1331.57

BM #2: " " Cut Top of Curb Inlet on North Side of Northwind approx. 790' West of Ridge Road Elev. = 1331.06

BM #3: " " Cut Top of Curb Inlet on North Side of Northwind approx. 290' West of Ridge Road Elev. = 1329.88

Remove existing 24" PVC pipe and backfill with sand. The sand backfill shall be within two feet of existing grade and shall be water-jetted and vibrated during backfilling. Area that previously drained to 24" PVC shall be regraded to proposed pipe. All costs for removal, backfilling, and regrading shall be incidental to "Site Clearing & Restoration".

Sta 0+27.7 to Sta 0+61.5 Install 33.8 L.F. Sand Backfill flushed & vibrated per City specs.

CAUTION!
 Ex. 8" Wtr Crossing

Sta 0+70.3, Line 1 End construction of 12" RCP w/ end section. Install 9.3 S.Y. 6" Rip-Rap

Sta 0+61.5, Line 1 Construct type 1A single curb inlet* (5'x3'). Top Elev. = 1331.05

PIER 37 ADDITION

Sta 0+00, Line 1 Begin construction of 18" RCP w/ end section. Install 11.3 S.Y. heavy stone rip-rap.

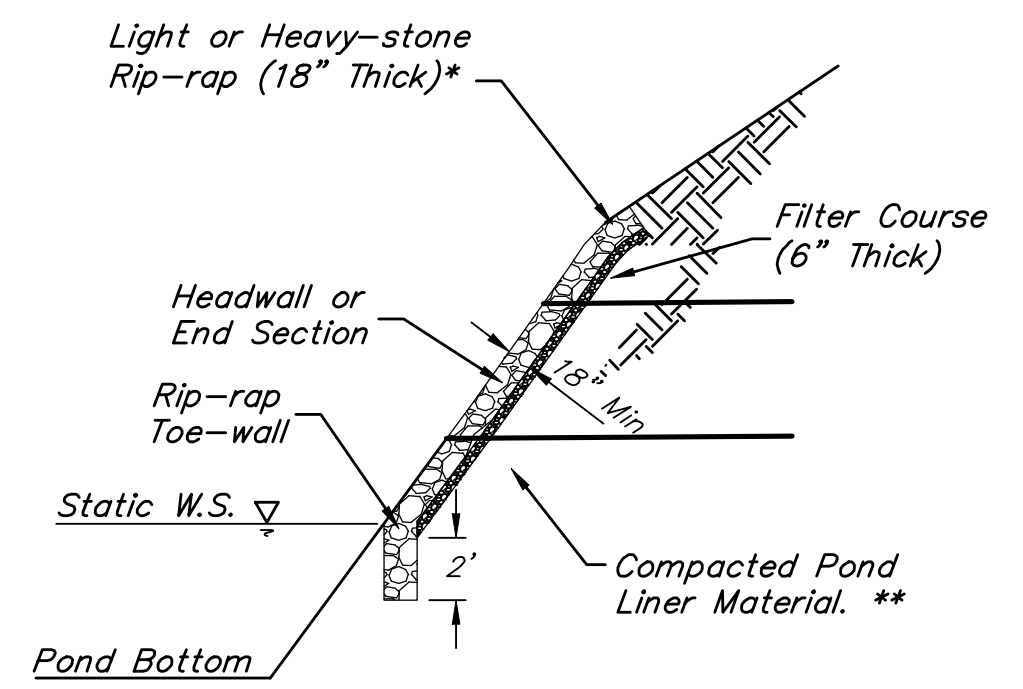
RESERVE "B"

Sta 0+27.7, Line 1 Construct type 1A single curb inlet* (5'x3'). Top Elev. = 1331.07

WILD ROSE CIR.

37TH ST. NORTH

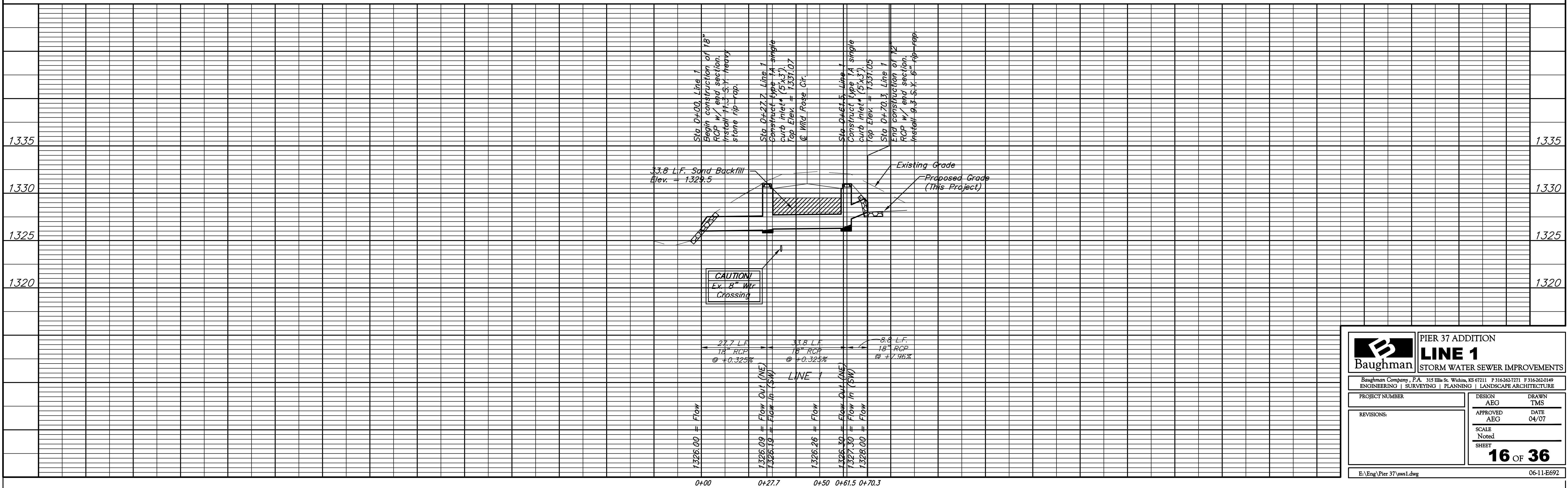
Scale: 1" = 20' Horizontal
 1" = 5' Vertical
 • = Iron



* Install Light-stone or Heavy Stone Rip-rap as noted on plan. Contractor may use Light-stone Rip-rap in locations where heavy-stone rip-rap is called for above the flow line of the structure.

RIP-RAP INSTALLATION TYPICAL DETAIL

* Curb inlets will not be standard. Hookups will be half the length and depth of standard hookups. This shall be taken into account when placing 4" PVC underdrain pipes.



Baughman		PIER 37 ADDITION	
		LINE 1	
STORM WATER SEWER IMPROVEMENTS			
Baughman Company, P.A. 315 Ellis St. Wichita, KS 67211 P 3162627271 F 3162620149			
ENGINEERING SURVEYING PLANNING LANDSCAPE ARCHITECTURE			
PROJECT NUMBER	DESIGN	DRAWN	
	AEG	TMS	
REVISIONS:	APPROVED	DATE	
	AEG	04/07	
	SCALE	Noted	
	SHEET		
		16 OF 36	
E:\Eng\Pier 37\wws1.dwg		06-11-E692	