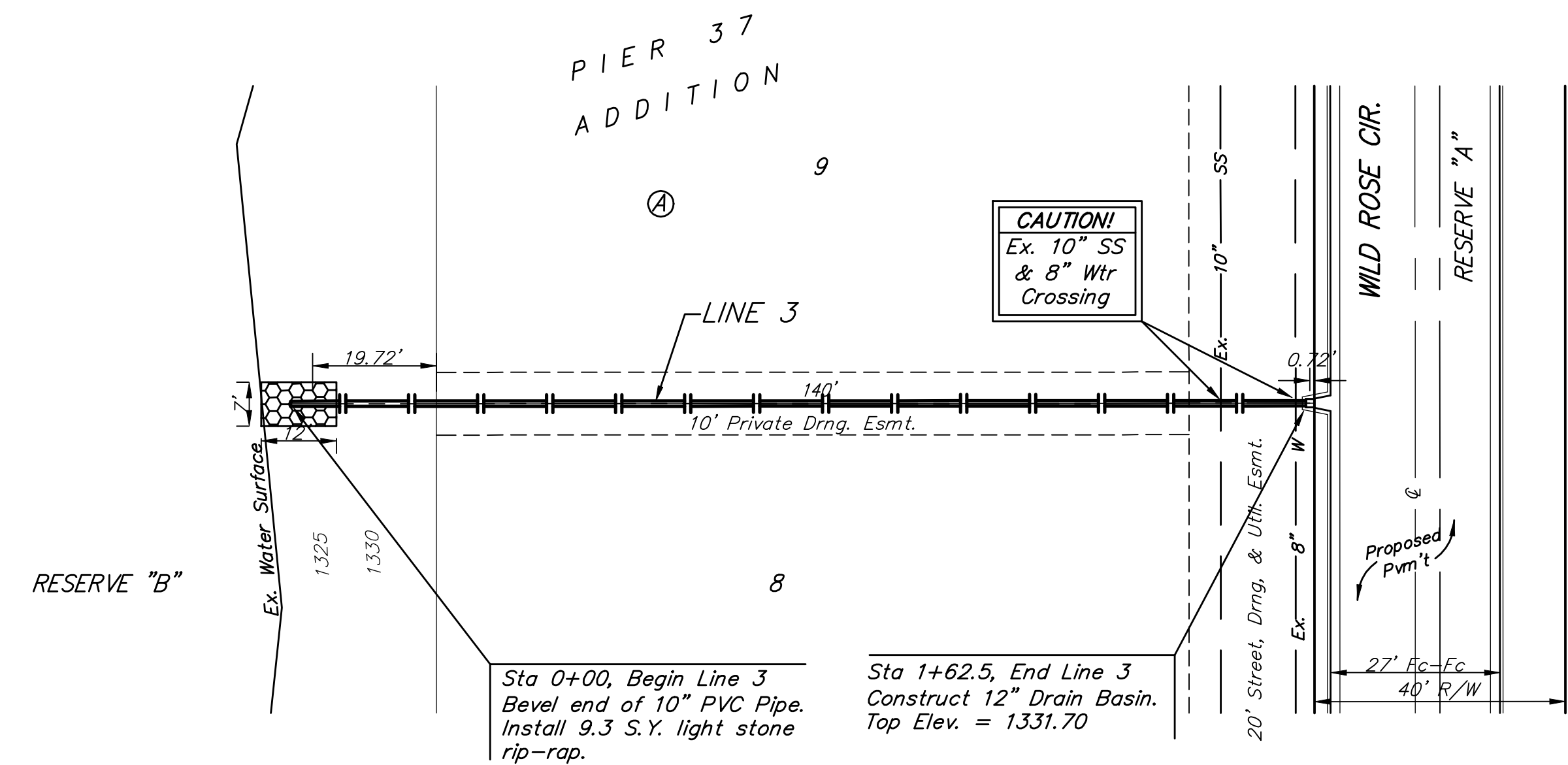
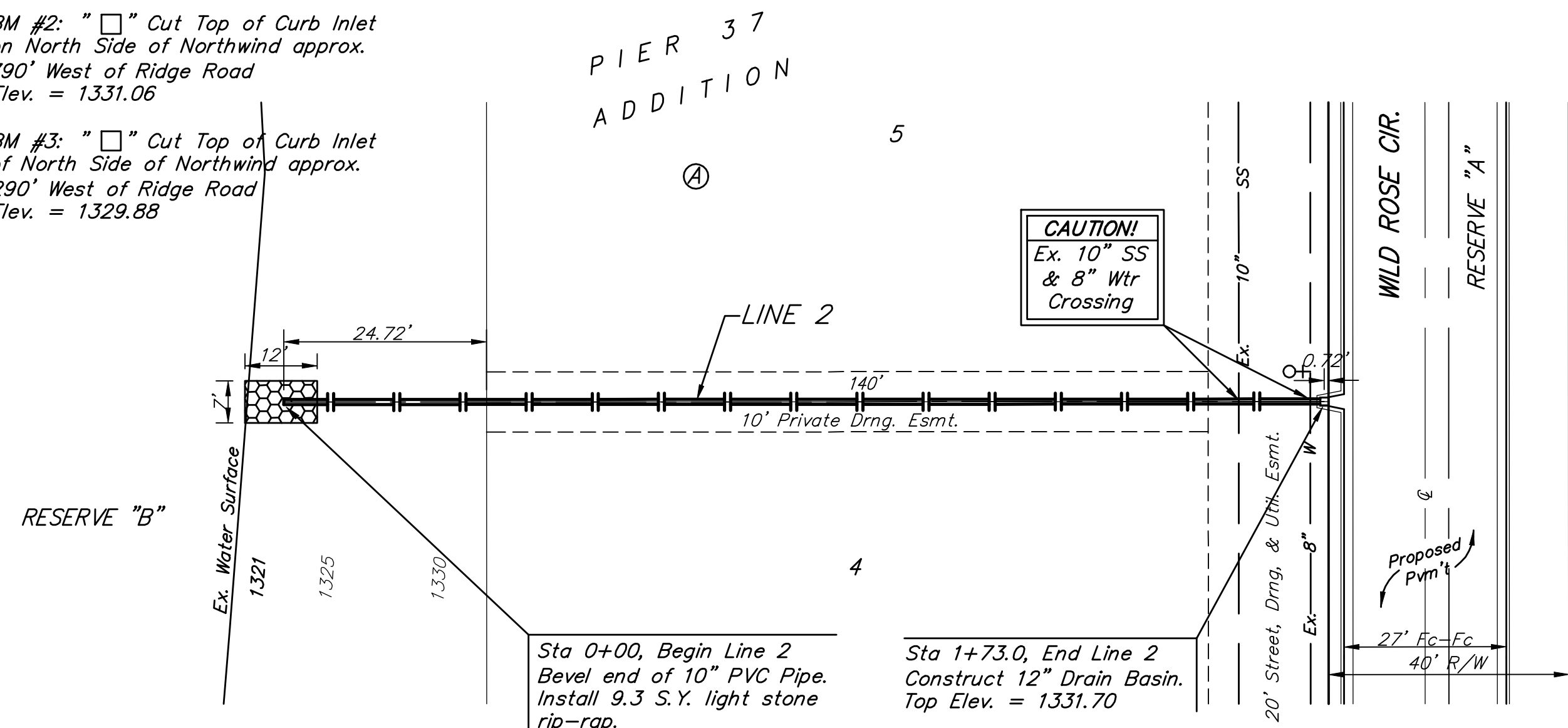


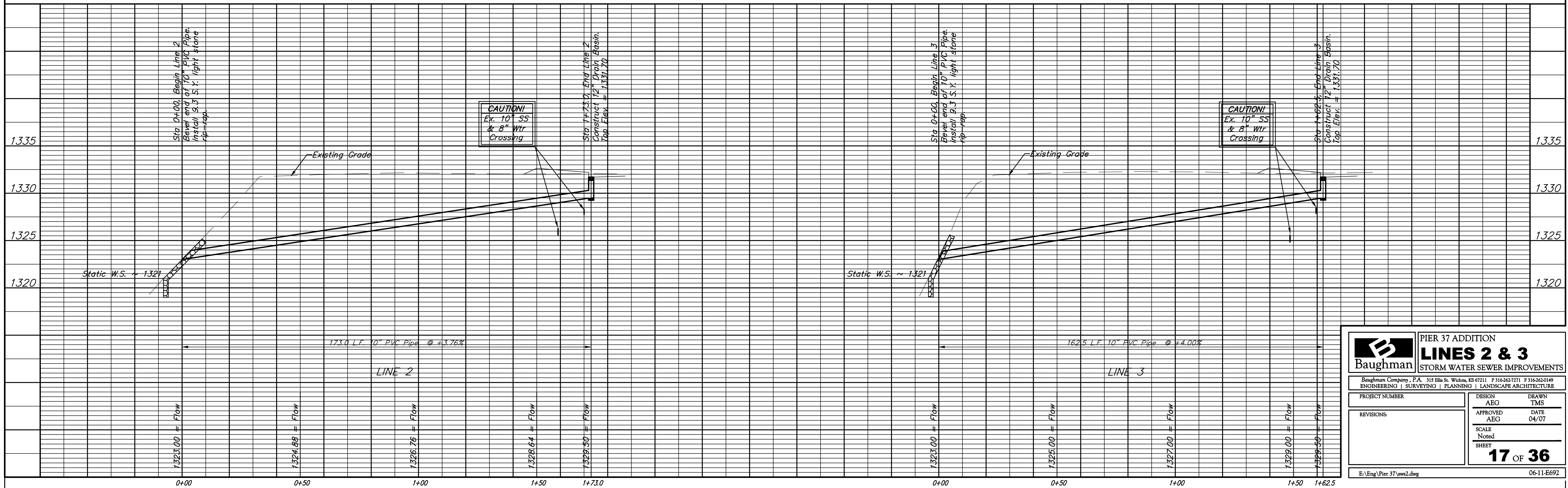
BENCHMARKS:
 BM #1: RR Spike on North Face of Power Pole approx. 1660' West of Ridge Road in South R/W of 37th St. N. Elev. = 1331.57

BM #2: "□" Cut Top of Curb Inlet on North Side of Northwind approx. 790' West of Ridge Road Elev. = 1331.06

BM #3: "□" Cut Top of Curb Inlet on North Side of Northwind approx. 290' West of Ridge Road Elev. = 1329.88



Scale: 1" = 20' Horizontal
 1" = 5' Vertical
 • = Iron



		PIER 37 ADDITION LINES 2 & 3 STORM WATER SEWER IMPROVEMENTS	
		<small>Baughman Company, P.A. 315 Ellis St. Wichita, KS 67211 P 3162627271 F 3162620149 ENGINEERING SURVEYING PLANNING LANDSCAPE ARCHITECTURE</small>	
PROJECT NUMBER	DESIGN	DRAWN	
REVISIONS:	AEG	TMS	
	APPROVED	DATE	
	AEG	04/07	
	SCALE	Noted	
	SHEET	17 OF 36	
E:\Eng\Pier 37\ww2.dwg		06-11-E692	