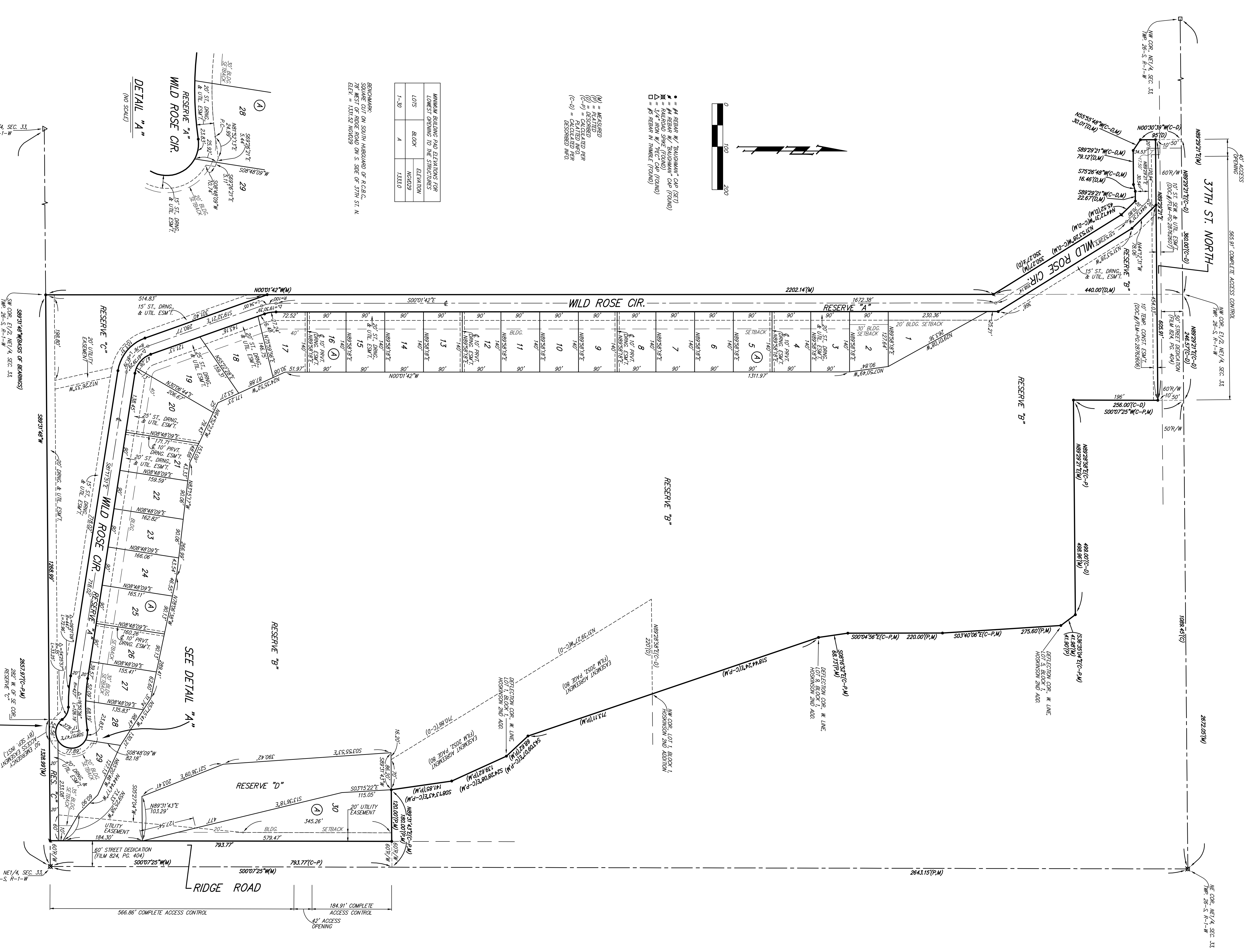


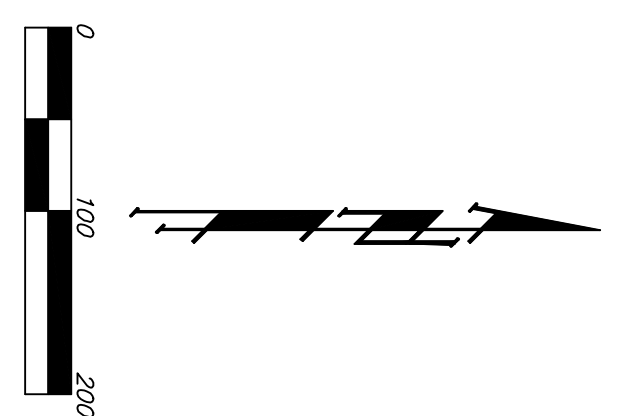
# PIER 37 ADDITION WICHITA, SEDGWICK COUNTY, KANSAS



MINIMUM BUILDING PAID ELEVATIONS FOR LOWEST OPENING TO THE STRUCTURES

LOTS	BLOCK	ELEVATION
1-30	A	1333.0

REMARKS: ON SOUTH HARBOR OF R.C.B.C.  
78' WEST OF RIDGE ROAD ON S. SIDE OF 37TH ST. N.  
ELEV. = 1331.52 NGVD29



- = #4 REBAR W/ "BAUGHMAN" CAP (SET)
- = #4 REBAR W/ "BAUGHMAN" CAP (FOUND)
- = #4 REBAR W/ "TEC" CAP (FOUND)
- = #5 REBAR W/ THIMBLE (FOUND)

- (M) = MEASURED
- (D) = DESCRIBED
- (C-P) = CALCULATED PER
- (C-D) = CALCULATED PER DESCRIBED INFO.

DETAIL "A"  
(NO SCALE)

DETAIL "B"  
(NO SCALE)

NOTE: INTERIOR FINISH PLAN FOR FINISHES HAS BEEN DEVELOPED FOR THIS SUBDIVISION AND IS ON FILE WITH THE CITY OF WICHITA, KANSAS. ALL EXHIBITS, EASEMENTS, RIGHTS-OF-WAY, OR RESERVES SHALL REMAIN AT ESTABLISHED GROUNDS OR AS NOTED WITH THE APPROVAL OF THE CITY OF WICHITA, KANSAS. THE FLOW OF THIS DRAINAGE SYSTEM SHALL BE ALLOWED.