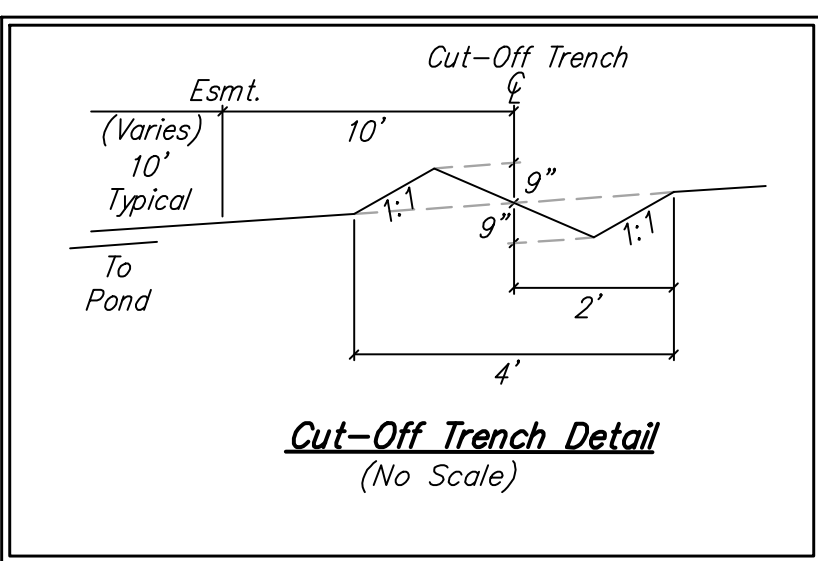
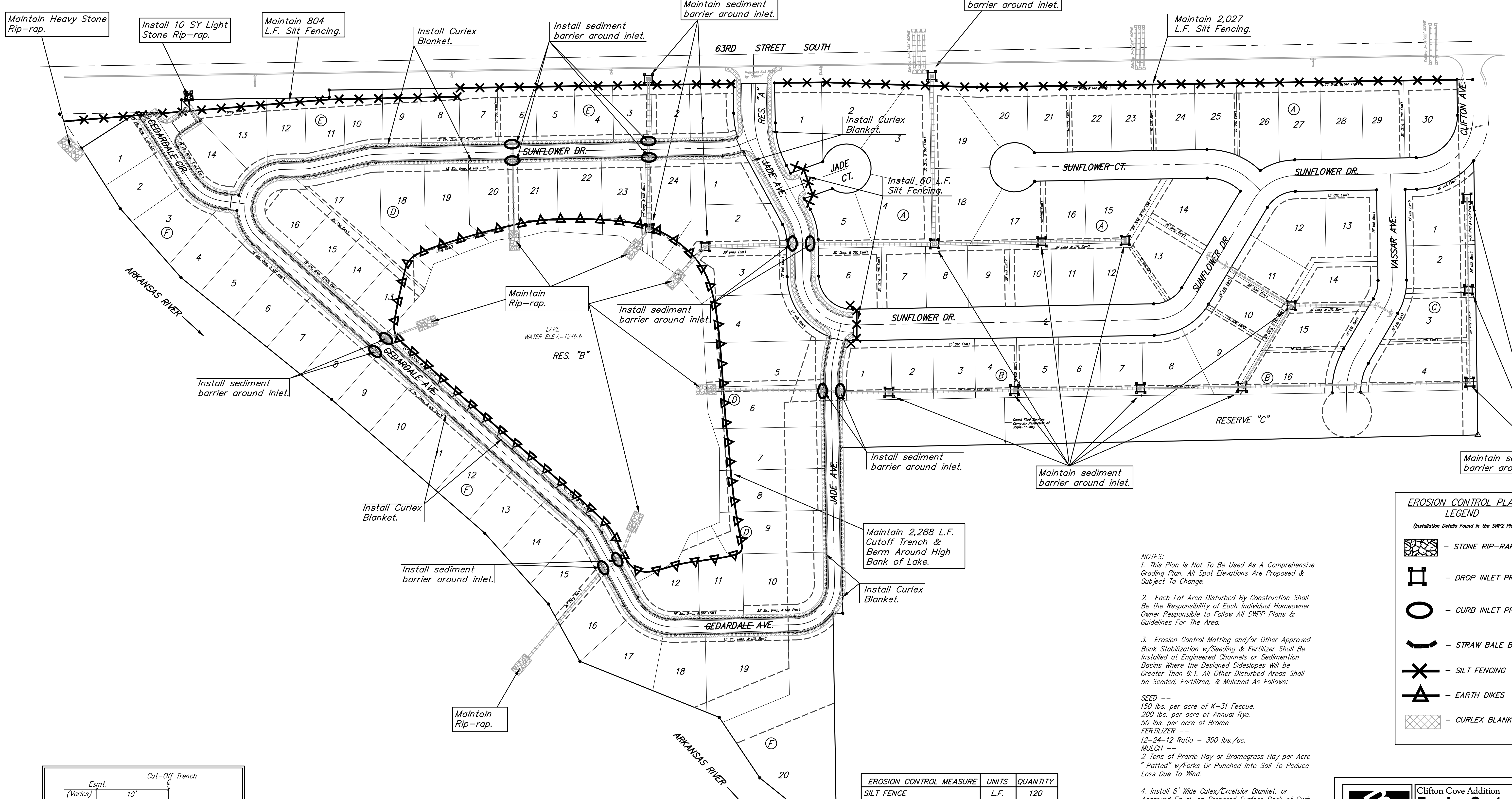
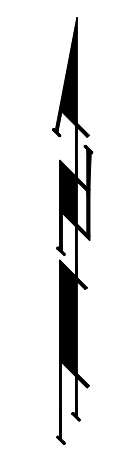


Contractor shall maintain one existing Construction Entrance with this project

Scale: 1" = 100'



EROSION CONTROL PLAN LEGEND
(Installation Details Found in the SWP2 Plan)

- STONE RIP-RAP
- DROP INLET PROTECTION
- CURB INLET PROTECTION
- STRAW BALE BARRIERS
- SILT FENCING
- EARTH DIKES
- CURLEX BLANKET

NO SCALE

NOTES:
 1. This Plan Is Not To Be Used As A Comprehensive Grading Plan. All Spot Elevations Are Proposed & Subject To Change.
 2. Each Lot Area Disturbed By Construction Shall Be the Responsibility of Each Individual Homeowner. Owner Responsible To Follow All SWPP Plans & Guidelines For The Area.
 3. Erosion Control Matting and/or Other Approved Bank Stabilization w/Seeding & Fertilizer Shall Be Installed at Engineered Channels or Sedimentation Basins Where the Designed Sideslopes Will be Greater Than 6:1. All Other Disturbed Areas Shall be Seeded, Fertilized, & Mulched As Follows:
 SEED --
 150 lbs. per acre of K-31 Fescue.
 200 lbs. per acre of Annual Rye.
 50 lbs. per acre of Bromo
 FERTILIZER --
 12-24-12 Ratio - 350 lbs./ac.
 MULCH --
 2 Tons of Prairie Hay or Bromegrass Hay per Acre "Patted" w/Forks Or Punched Into Soil To Reduce Loss Due To Wind.
 4. Install 8' Wide Curlex/Excelsior Blanket, or Approved Equal, on Prepared Surface Back of Curb. Edge of Blanket Will Be At Back of Curb. Install Per Manufacturers Recommendation, Including Staples.
 5. The Silt Fence Install Around the Ponds May be Substituted with a 40' Wide Strip of Mat-Blend 50/50 Plus Wood Fiber Mulch. The Seeding Rate Shall Be the Same As Note 3. Contact Mat, Inc. For More Information on Mat-Blend Plus at 1-888-477-3028. Mat-Blend Plus May be Substituted For Another Comparable Hydro-Mulch Product.

EROSION CONTROL MEASURE	UNITS	QUANTITY
SILT FENCE	L.F.	120
RIPRAP	S.Y.	10
DROP INLET BARRIER	EA.	Maintain
CURB INLET BARRIER	EA.	12
STRAW BALE BARRIER	EA.	Maintain
EROSION CONTROL BERM	L.F.	Maintain
CURLEX	S.Y.	7,294
POND E.C. BLANKET	S.Y.	Maintain
Construction Entrance	EA.	1

QUANTITIES ARE FOR INFORMATION ONLY!
 CONTRACTOR SHALL VERIFY QUANTITIES PER FINAL BID QUANTITY SHEET.

Baughman Clifton Cove Addition
Erosion Control Plan
 Street Improvements

Baughman Company, P.A. 315 Ellis St. Wichita, KS 67211 P 3162627271 F 3162620149
 ENGINEERING | SURVEYING | PLANNING | LANDSCAPE ARCHITECTURE

PROJECT NUMBER: 472-84227 DESIGN: MWS/JAK DRAWN: TMS
 APPROVED: DATE: 5/17/06

REVISIONS:

SCALE: 1" = 100'
 SHEET: 17 OF 31

CliftonCove/STR/Erosion plan 05-08-E320