

FINAL PLAT

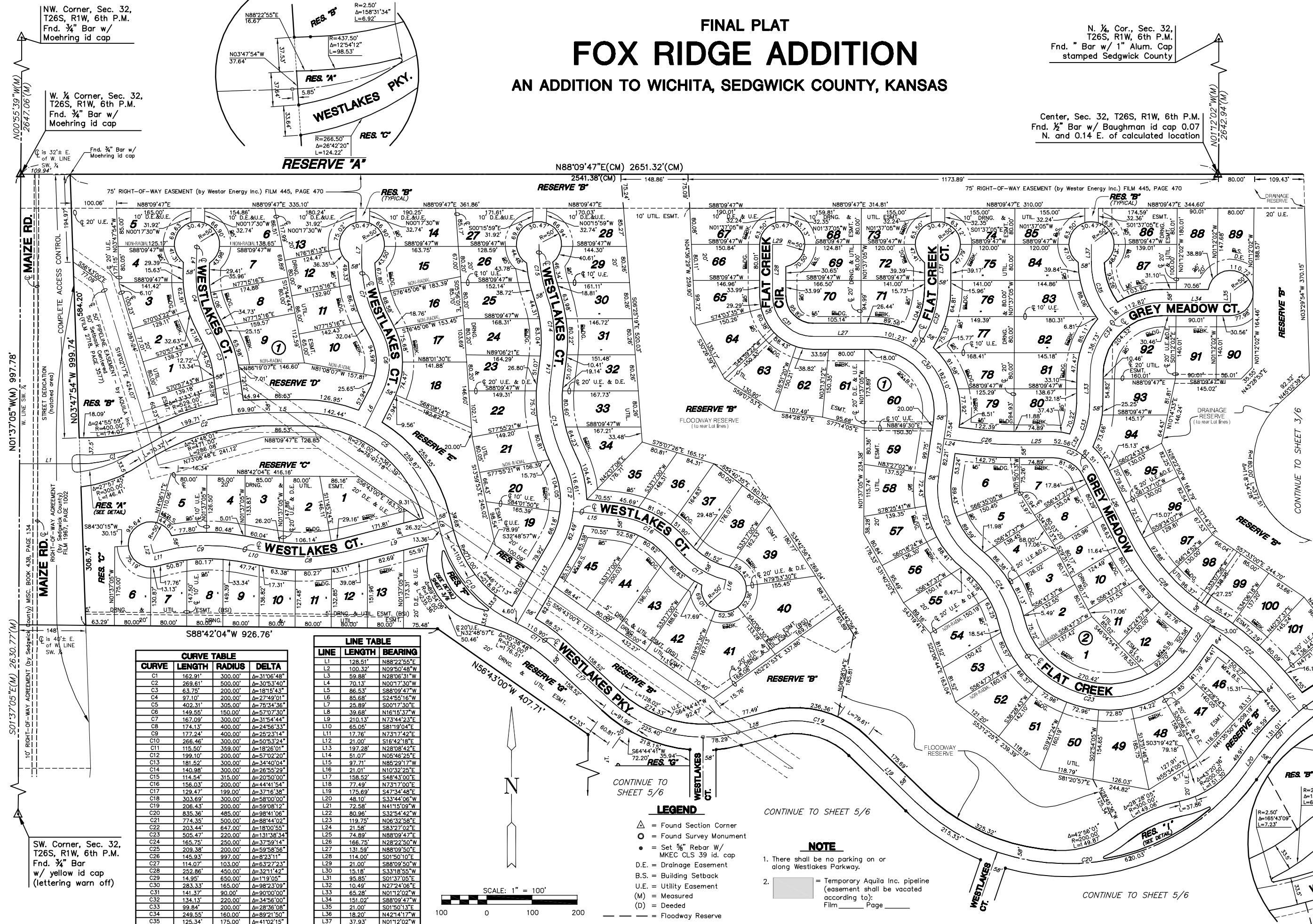
FOX RIDGE ADDITION

AN ADDITION TO WICHITA, SEDGWICK COUNTY, KANSAS

N. ¼ Cor., Sec. 32,
T26S, R1W, 6th P.M.
Fnd. " Bar w/ 1" Alum. Cap
stamped Sedgwick County

Center, Sec. 32, T26S, R1W, 6th P.M.
Fnd. ½" Bar w/ Baughman id cap 0.07
N. and 0.14 E. of calculated location

MINIMUM PAD ELEVATIONS (LOWEST OPENINGS)			
LOT	BLOCK	ELEVATION (CITY DATUM)	ELEVATION (NGVD)
5	1	165.6	1353.0
6	1	165.4	1352.8
13	1	165.2	1352.6
14	1	165.0	1352.4
27	1	165.0	1352.4
28	1	164.9	1352.3
29	1	164.9	1352.3
30	1	164.9	1352.3
31	1	164.9	1352.3
32	1	164.9	1352.3
33	1	164.9	1352.3
34	1	164.9	1352.3
35	1	164.9	1352.3
36	1	164.9	1352.3
37	1	164.9	1352.3
38	1	164.9	1352.3
39	1	164.9	1352.3
40	1	164.9	1352.3
41	1	164.9	1352.3
46	1	164.9	1352.3
47	1	164.9	1352.3
48	1	164.9	1352.3
49	1	164.9	1352.3
50	1	164.9	1352.3
51	1	164.9	1352.3
52	1	164.9	1352.3
53	1	164.9	1352.3
54	1	164.9	1352.3
55	1	164.9	1352.3
56	1	164.9	1352.3
57	1	164.9	1352.3
58	1	164.9	1352.3
59	1	164.9	1352.3
60	1	164.9	1352.3
61	1	164.9	1352.3
62	1	164.9	1352.3
63	1	164.9	1352.3
64	1	164.9	1352.3
65	1	164.9	1352.3
66	1	164.9	1352.3
67	1	164.9	1352.3
68	1	165.7	1353.1
73	1	166.6	1354.0
74	1	167.1	1354.5
85	1	167.8	1355.2
86	1	167.8	1355.2
88	1	167.8	1355.2
89	1	167.8	1355.2
90	1	167.8	1355.2
91	1	167.8	1355.2
92	1	167.8	1355.2
93	1	167.8	1355.2
94	1	167.8	1355.2
95	1	167.8	1355.2
96	1	167.8	1355.2
97	1	167.8	1355.2
98	1	167.8	1355.2
99	1	167.8	1355.2
100	1	167.8	1355.2
101	1	167.8	1355.2



CURVE TABLE			
CURVE	LENGTH	RADIUS	DELTA
C1	162.91'	300.00'	Δ=31°08'48"
C2	269.61'	500.00'	Δ=30°53'40"
C3	63.79'	200.00'	Δ=18°15'43"
C4	97.10'	200.00'	Δ=27°49'01"
C5	402.31'	305.00'	Δ=75°34'36"
C6	149.55'	150.00'	Δ=57°07'30"
C7	167.09'	300.00'	Δ=31°54'44"
C8	174.13'	400.00'	Δ=24°56'33"
C9	177.24'	400.00'	Δ=25°23'14"
C10	266.46'	300.00'	Δ=50°53'24"
C11	115.50'	359.00'	Δ=18°26'01"
C12	199.10'	200.00'	Δ=57°02'20"
C13	181.52'	300.00'	Δ=34°40'04"
C14	148.93'	300.00'	Δ=26°55'29"
C15	114.54'	315.00'	Δ=20°30'00"
C16	156.03'	200.00'	Δ=44°41'54"
C17	129.47'	199.00'	Δ=37°16'38"
C18	303.69'	300.00'	Δ=58°00'00"
C19	206.43'	200.00'	Δ=59°08'12"
C20	835.36'	485.00'	Δ=98°41'06"
C21	774.35'	500.00'	Δ=88°44'02"
C22	203.44'	647.00'	Δ=18°00'55"
C23	505.47'	220.00'	Δ=131°38'34"
C24	165.75'	250.00'	Δ=37°59'14"
C25	209.38'	200.00'	Δ=59°38'56"
C26	145.93'	997.00'	Δ=8°23'11"
C27	114.07'	103.00'	Δ=63°27'23"
C28	252.86'	450.00'	Δ=32°11'42"
C29	14.95'	650.00'	Δ=1°19'05"
C30	283.33'	165.00'	Δ=98°23'09"
C31	141.37'	90.00'	Δ=90°00'00"
C32	134.13'	220.00'	Δ=34°58'00"
C33	99.84'	200.00'	Δ=28°36'08"
C34	249.55'	160.00'	Δ=89°21'50"
C35	125.34'	175.00'	Δ=41°02'15"

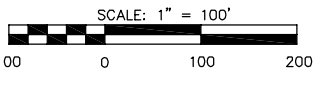
LINE TABLE		
LINE	LENGTH	BEARING
L1	128.51'	N88°22'55"E
L2	100.32'	N09°50'48"W
L3	59.88'	N28°08'31"W
L4	70.13'	N00°17'30"W
L5	86.53'	S88°09'47"W
L6	85.68'	S24°55'16"W
L7	25.89'	S00°17'30"W
L8	39.68'	N16°15'37"W
L9	210.13'	N73°44'23"E
L10	65.05'	S81°19'04"E
L11	17.76'	N73°17'42"E
L12	21.00'	S16°42'18"E
L13	197.28'	N28°08'42"E
L14	51.07'	N05°48'25"E
L15	97.71'	N85°29'17"W
L16	21.01'	N10°32'25"E
L17	158.52'	S48°43'00"E
L18	77.49'	N73°17'00"E
L19	175.69'	S47°34'48"E
L20	48.10'	S33°44'06"W
L21	72.58'	N41°15'09"W
L22	80.96'	S32°54'42"W
L23	119.75'	N06°32'58"E
L24	21.58'	S83°27'02"E
L25	74.89'	N88°09'47"E
L26	166.75'	N28°22'50"W
L27	131.59'	N88°09'50"E
L28	114.00'	S01°50'10"E
L29	21.00'	S88°09'50"W
L30	15.18'	S33°18'55"W
L31	95.85'	S01°37'05"E
L32	10.49'	N27°24'06"E
L33	65.28'	N01°12'02"W
L34	151.02'	S88°09'47"W
L35	21.00'	S01°50'13"E
L36	18.20'	N42°41'17"W
L37	37.93'	N01°12'02"W

LEGEND

- △ = Found Section Corner
- = Found Survey Monument
- = Set ¾" Rebar w/ MKEC CLS 39 id. cap
- D.E. = Drainage Easement
- B.S. = Building Setback
- U.E. = Utility Easement
- (M) = Measured
- (D) = Deeded
- = Floodway Reserve

NOTE

- There shall be no parking on or along Westlakes Parkway.
- Temporary Aquila Inc. pipeline (easement shall be vacated according to):
Film _____ Page _____



SW. Corner, Sec. 32,
T26S, R1W, 6th P.M.
Fnd. ¾" Bar w/ yellow id cap
(lettering warn off)