

**BENCHMARKS:**  
 BM #1: "□" CL face of catch basin, west side of Lot 4, Block 5, Falcon Falls Addition. Elev. = 1352.47 MSL  
 BM #2: "□" south end of the south curb return at Kite and Peregrine, Falcon Falls Addition. Elev. = 1359.85 MSL

\* Inlets at Sta 0+86.2 and Sta 1+27.7, Line 1 shall have offset center wall to accommodate 48" RCP.

10' Util. Esmt.  
 39  
 C

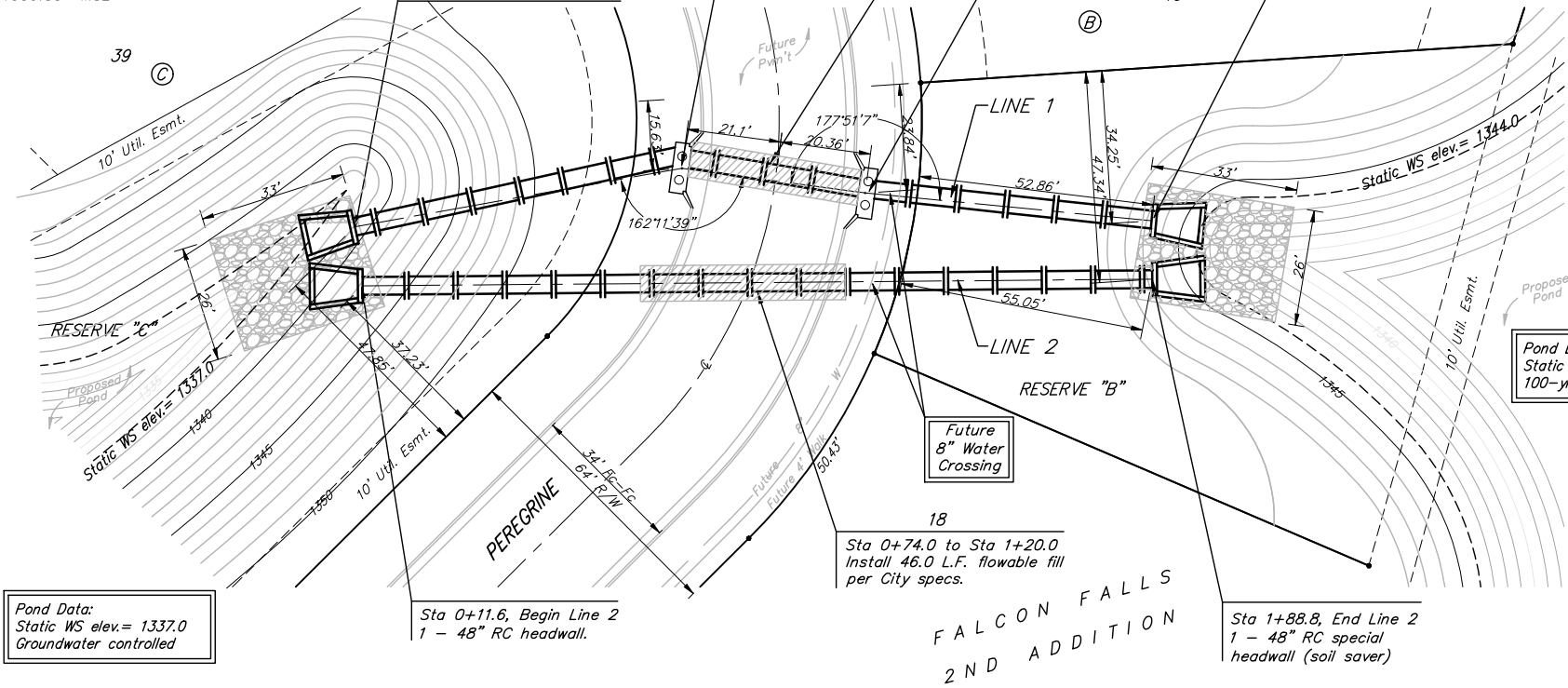
Sta 0+11.6, Begin Line 1  
 1 - 48" RC headwall.  
 95.3 S.Y. heavy stone rip-rap

Sta 0+86.2, Line 1  
 Construct Type 1A\*  
 double curb inlet.  
 (10'x3')  
 Top Elev. = 1349.20

Sta 0+86.2 to Sta 1+27.7  
 Install 41.5 L.F. flowable fill  
 per City specs.

Sta 1+27.7, Line 1  
 Construct Type 1A\*  
 double curb inlet.  
 (10'x3')  
 Top Elev. = 1349.20

Sta 1+92.2, End Line 1  
 1 - 48" RC special  
 headwall (soil saver)  
 95.3 S.Y. heavy stone  
 rip-rap.



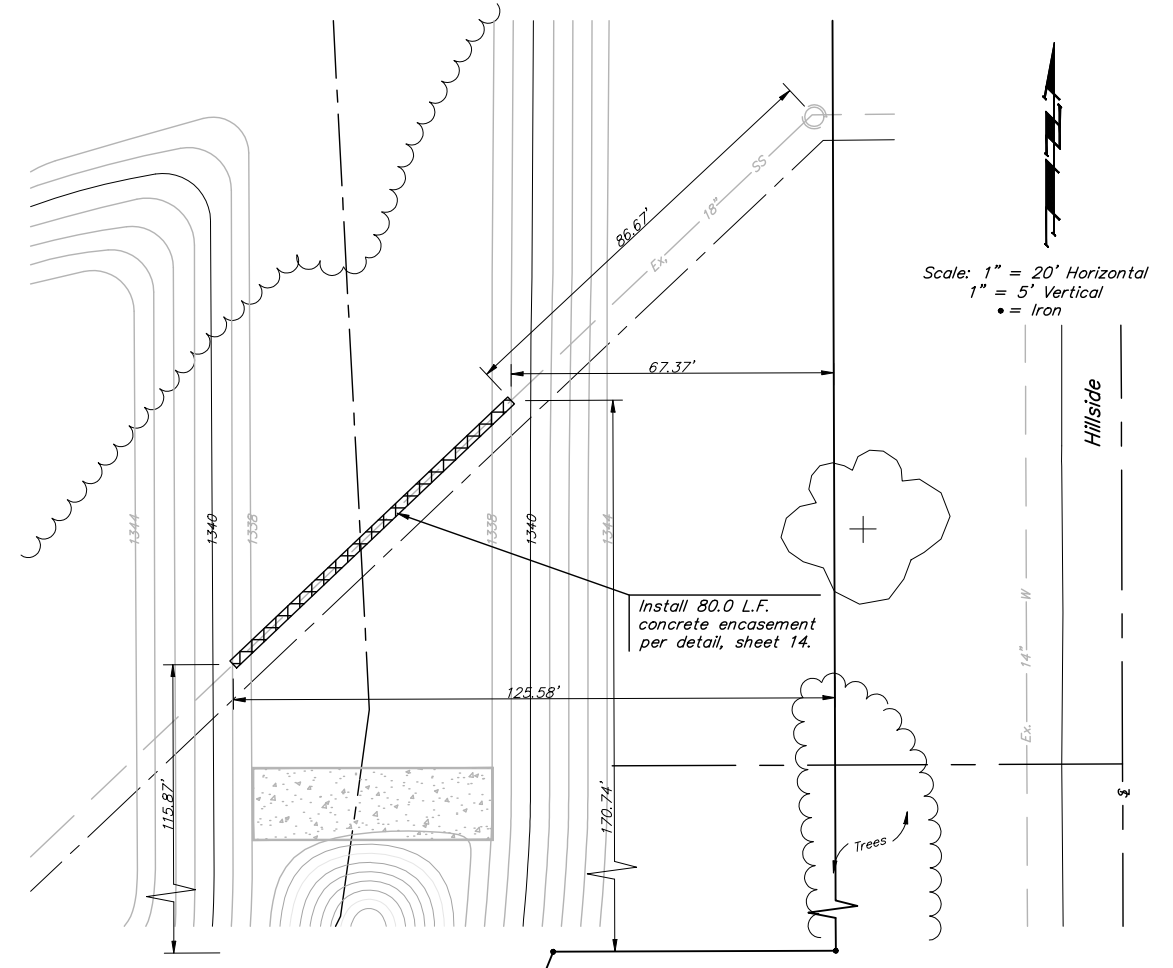
Pond Data:  
 Static WS elev. = 1344.0  
 100-yr WS elev. = 1348.8

Pond Data:  
 Static WS elev. = 1337.0  
 Groundwater controlled

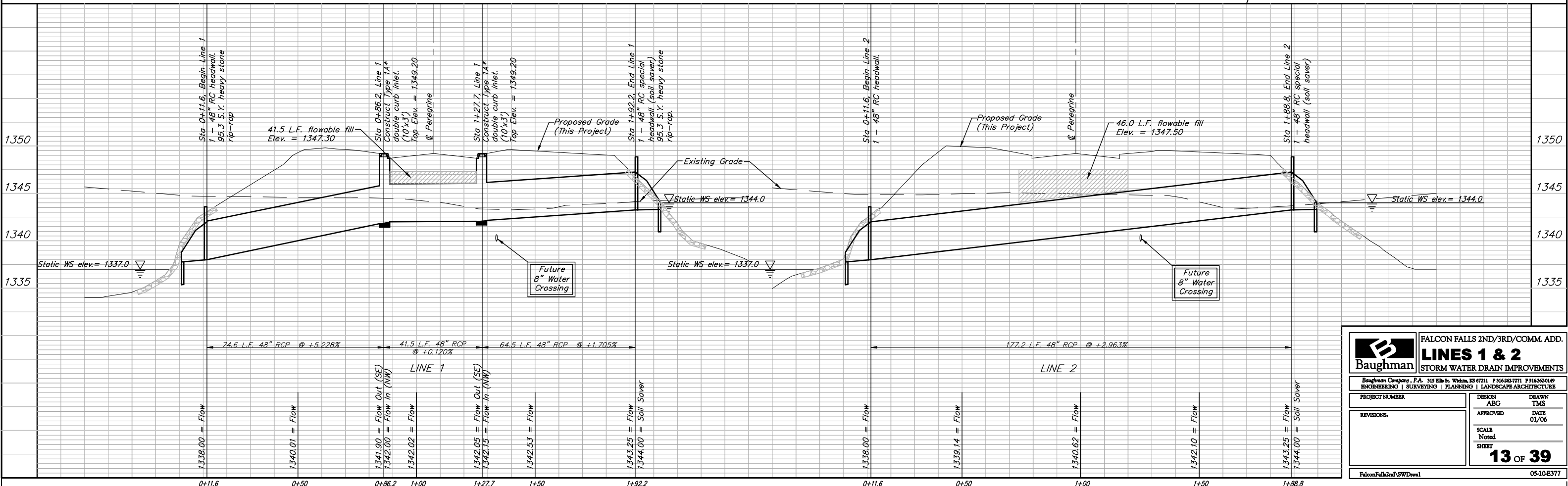
Sta 0+11.6, Begin Line 2  
 1 - 48" RC headwall.

Sta 0+74.0 to Sta 1+20.0  
 Install 46.0 L.F. flowable fill  
 per City specs.

Sta 1+88.8, End Line 2  
 1 - 48" RC special  
 headwall (soil saver)



Scale: 1" = 20' Horizontal  
 1" = 5' Vertical  
 • = Iron



		<b>FALCON FALLS 2ND/3RD/COMM. ADD.</b> <b>LINE 1 &amp; 2</b> <b>STORM WATER DRAIN IMPROVEMENTS</b>	
		<small>Baughman Company, P.A. 315 Ellis St. Wilkes, KS 67111 P 316-262-7771 F 316-262-0149        ENGINEERING   SURVEYING   PLANNING   LANDSCAPE ARCHITECTURE</small>	
PROJECT NUMBER	DESIGN	APPROVED	DRAWN
REVISIONS	ABG	TMS	TMS
	APPROVED	DATE	01/06
	SCALE	Noted	
	SHEET	<b>13 OF 39</b>	
FalconFalls2nd/SWDrain1		05-10-E377	