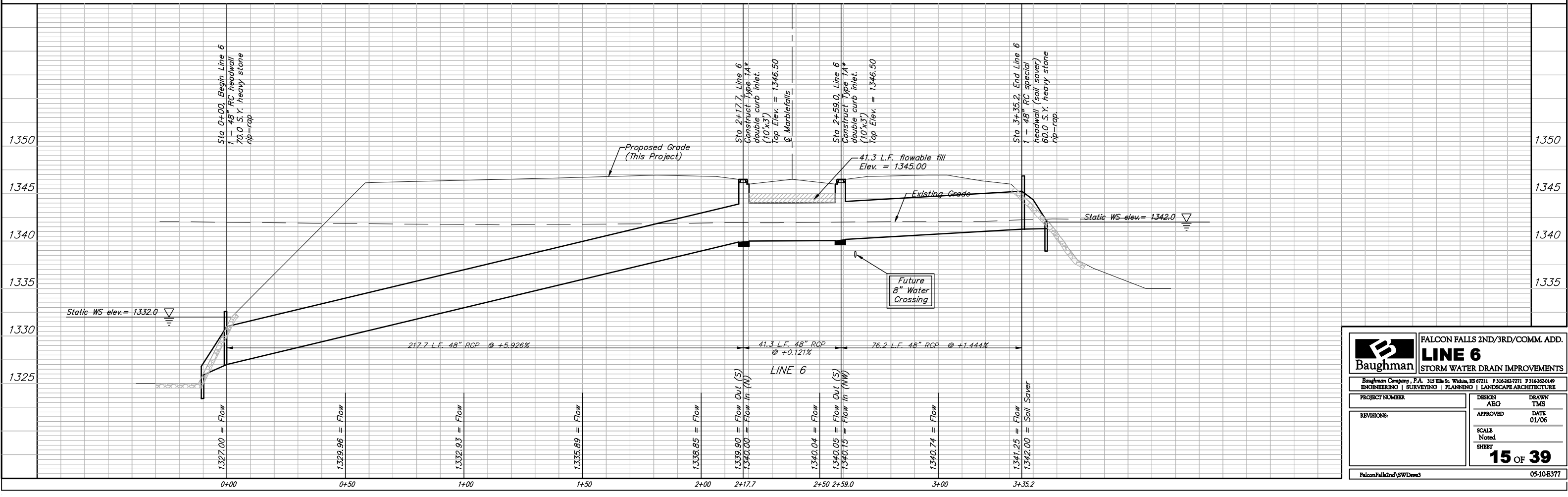
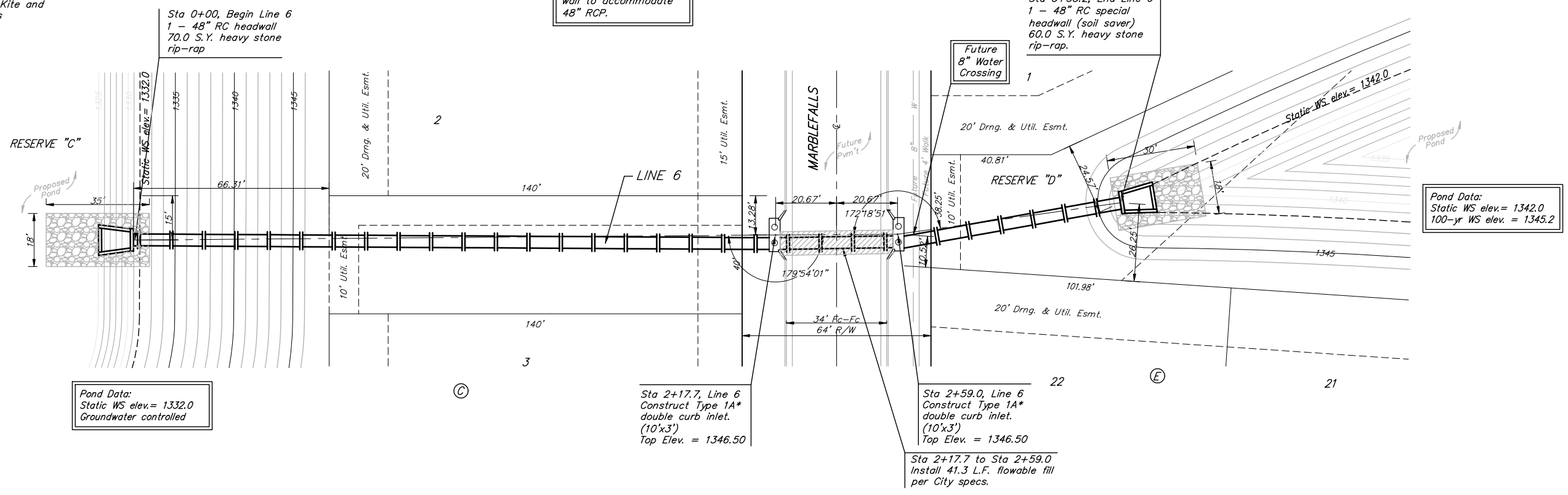


**BENCHMARKS:**  
 BM #1: "□" CL face of catch basin, west side of Lot 4, Block 5, Falcon Falls Addition. Elev. = 1352.47 MSL

BM #2: "□" south end of the south curb return at Kite and Peregrine, Falcon Falls Addition. Elev. = 1359.85 MSL

Scale: 1" = 20' Horizontal  
 1" = 5' Vertical  
 • = Iron



		<b>FALCON FALLS 2ND/3RD/COMM. ADD.</b> <b>LINE 6</b> <b>STORM WATER DRAIN IMPROVEMENTS</b>	
		<small>Baughman Company, P.A. 315 Ellis St. Wilkes, KS 67111 P 316-262-7771 F 316-262-0149        ENGINEERING   SURVEYING   PLANNING   LANDSCAPE ARCHITECTURE</small>	
PROJECT NUMBER  REVISIONS	DESIGN AEG APPROVED	DRAWN TMS DATE 01/06	SCALE Noted SHEET <b>15 OF 39</b>
<small>FalconFalls2nd/SWDDraw3</small>		<small>05-10-E377</small>	