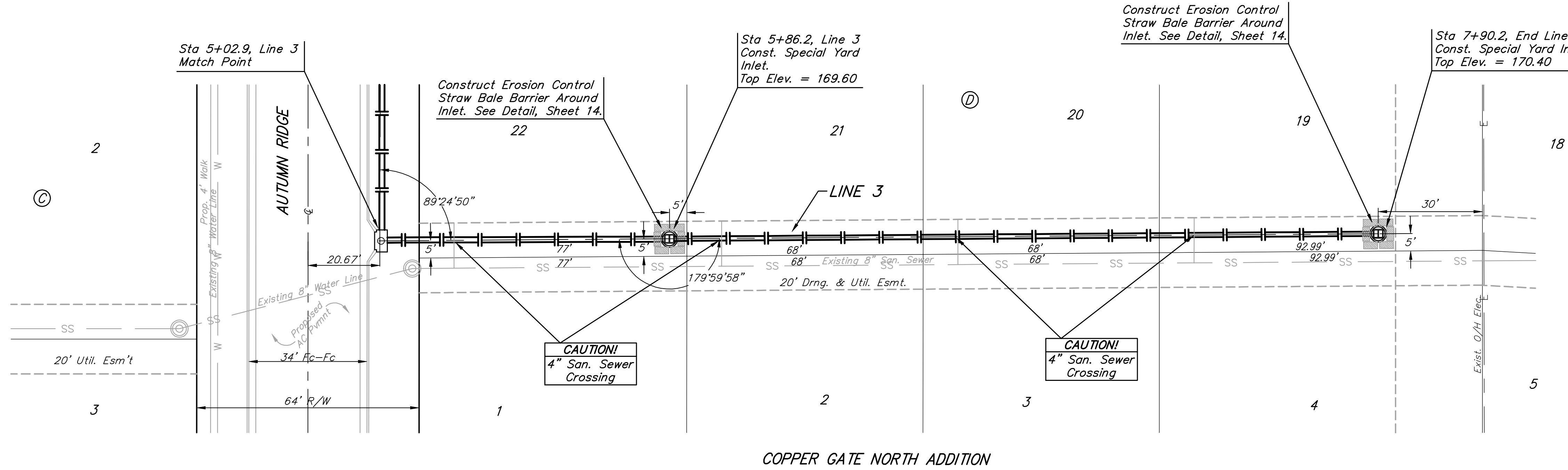


**BENCHMARKS:**  
 BM #1: C.O.W. disc at SW corner of intersection.  
 30.00'± S. of CL of 13th St. N.  
 35.00'± W. of CL of 135th St. W.  
 Elev. = 168.25 City Datum

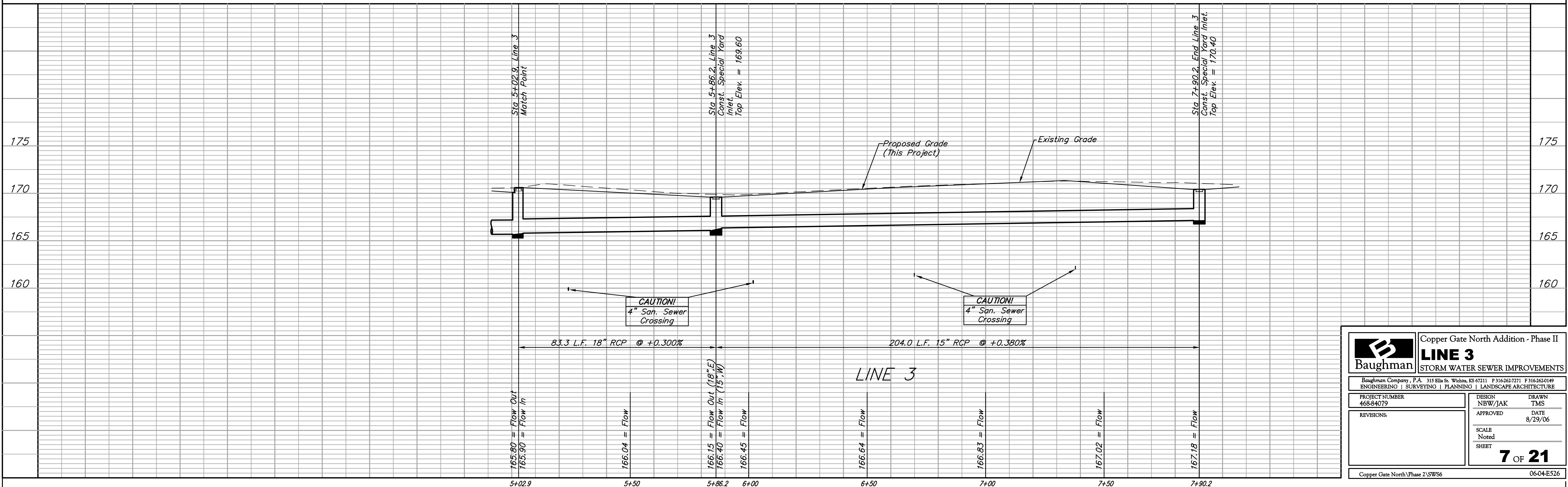
BM #2: "□" Cut in Top of Curb  
 10' South of end of Existing Pavement, East Curb adjacent to Lot 12, Block D, Copper Gate North Addition.  
 Elev. = 174.73 City Datum

BM #3: BM Disc in top Curb  
 Adjacent to Fire Hydrant at E. End of N. Curb Return of Kiwi & Decker.  
 Elev. = 173.64 City Datum



Scale: 1" = 20' Horizontal  
 1" = 5' Vertical  
 • = Iron

COPPER GATE NORTH ADDITION



		Copper Gate North Addition - Phase II	
		<b>LINE 3</b>	
STORM WATER SEWER IMPROVEMENTS		Baughman Company, P.A. 315 Ellis St. Wichita, KS 67211 P 316-262-7271 F 316-262-6149	
ENGINEERING   SURVEYING   PLANNING   LANDSCAPE ARCHITECTURE		PROJECT NUMBER: 468-84079	
DESIGN: NBW/JAK		DRAWN: TMS	
APPROVED:		DATE: 8/29/06	
REVISIONS:		SCALE: Noted	
		SHEET: <b>7 OF 21</b>	
Copper Gate North\Phase 2\SW56		06-04-E526	