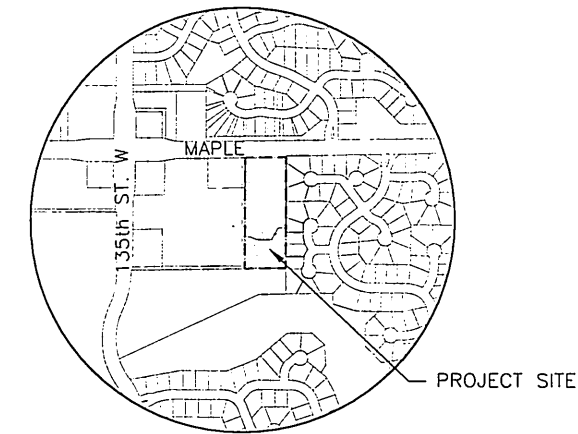


STORM WATER DRAIN #279  
TO SERVE  
**AUBURN HILLS COMMERCIAL 4th ADDITION**  
PROJECT NO. 468-84108

THE CITY OF WICHITA, KANSAS  
JAMES L. ARMOUR, CITY ENGINEER  
**OCA NO. 751426**

**MKEC**  
ENGINEERING  
CONSULTANTS, INC.  
411 N. WEBB ROAD  
WICHITA, KS. 67206  
316-684-9600



**VICINITY MAP**  
NO SCALE

**GENERAL NOTES**

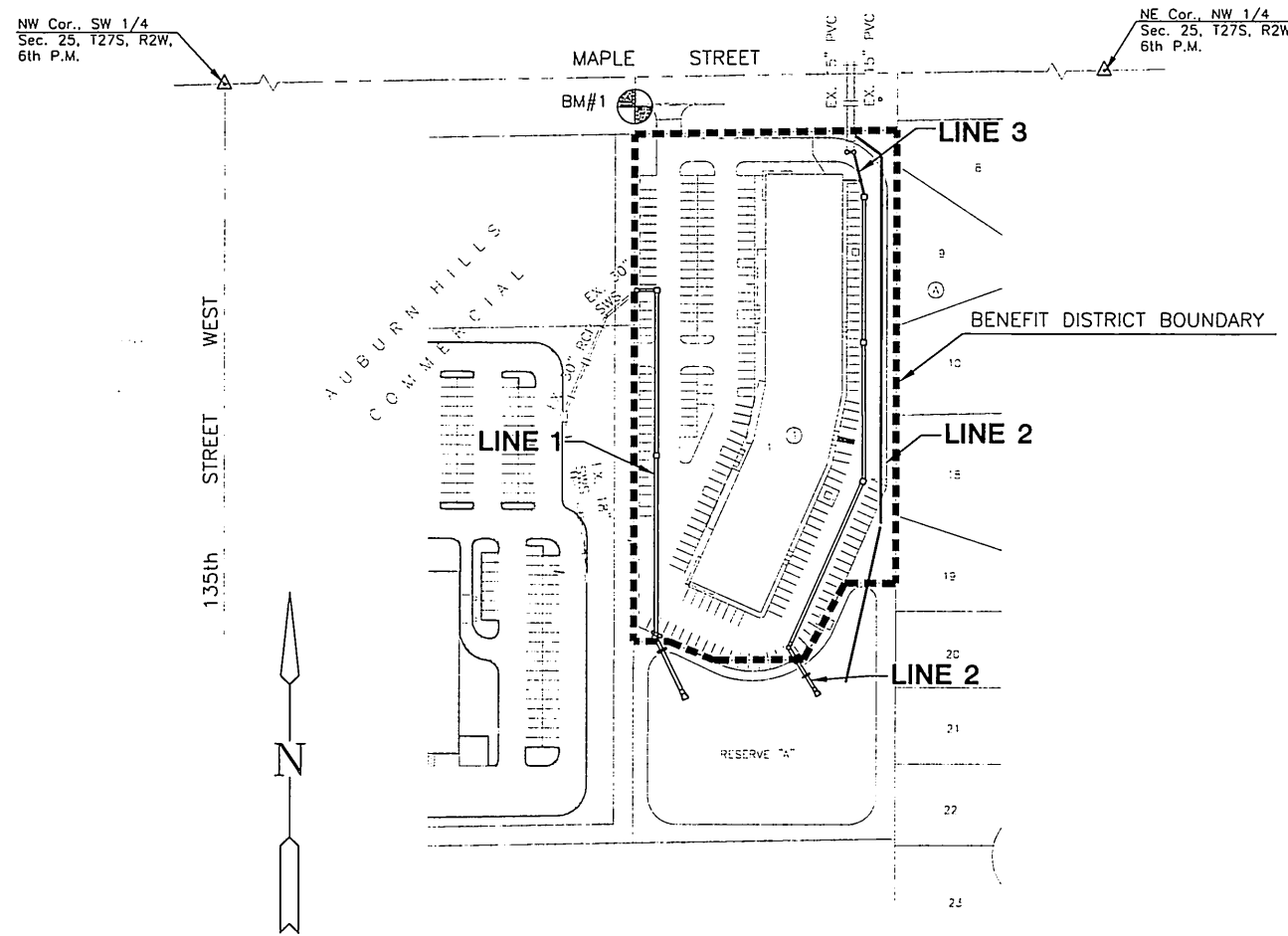
1. UNLESS SHOWN OR OTHERWISE STATED ON THESE DRAWINGS, MATERIALS AND CONSTRUCTION SHALL BE IN ACCORDANCE WITH THE CITY OF WICHITA STANDARD SPECIFICATIONS.
2. THE TOPS OF INLETS AND MANHOLES AS NOTED ON THE PLANS MAY VARY SO AS TO MEET PROPOSED TOP OF CURB ELEVATIONS OR PAVEMENT ELEVATIONS. THE FIELD ENGINEER SHALL LOCATE INLETS AND MANHOLES WITH REFERENCE TO PROPOSED PAVING PLANS OF THE PERTINENT PARKING LOTS.
3. ALL CONCRETE SHALL BE STANDARD PAVING MIX UNLESS OTHERWISE NOTED.
4. THE CONTRACTOR SHALL BE RESPONSIBLE FOR PRESERVING PROPERTY IRONS. THE CONTRACTOR SHALL BE REQUIRED TO RE-ESTABLISH ANY PROPERTY IRONS WHICH ARE DAMAGED OR DESTROYED BY HIS CONSTRUCTION OPERATIONS. SUCH IRONS SHALL BE RE-ESTABLISHED BY A LICENSED LAND SURVEYOR IN ACCORDANCE WITH STATE LAWS.
5. CONTRACTOR SHALL NOTIFY UTILITY COMPANIES OF CONSTRUCTION SCHEDULING.
6. EXISTING UTILITIES AND THEIR LOCATIONS, AS SHOWN ON THE PLANS REPRESENT THE BEST INFORMATION OBTAINABLE FOR DESIGN. LOCATION INFORMATION HAS BEEN OBTAINED FROM THE VARIOUS COMPANIES AND IS EITHER FROM COMPANY UTILITY DRAWINGS OR COMPANY PROVIDED FIELD LOCATIONS. THE PLAN LOCATIONS SHOWN ARE NOT GUARANTEED. ADDITIONAL EXISTING UTILITIES MAY ALSO BE ENCOUNTERED.
7. CONTRACTOR WILL BE REQUIRED TO PROVIDE A MINIMUM ADVANCE NOTICE OF SEVENTY-TWO (72) HOURS TO UTILITY COMPANIES TO STARTING ANY EXCAVATION AS FOLLOWS:

KANSAS ONE-CALL                      800-344-7233  
OR 687-2470 (LOCAL WICHITA)

THE CONTRACTOR MUST NOTIFY THE FOLLOWING IN CASE OF EMERGENCY:

COX COMMUNICATIONS (CABLE)	262-0661
WESTAR (ELECTRIC)	261-6512
KANSAS GAS SERVICE (GAS)	832-3101
SBC (TELEPHONE)	800-870-8390
CITY OF WICHITA WATER & SEWER	262-6000
AQUILA (GAS)	800-303-0357

8. RUBBLE FROM THE REMOVAL OF MISCELLANEOUS STRUCTURES AND EXCESS EXCAVATION WHICH IS TO BE WASTED SHALL BE DISPOSED OF ON SITES TO BE PROVIDED BY THE CONTRACTOR. THESE SITES SHALL BE APPROVED BY THE ENGINEER AS TO SUITABILITY, APPEARANCE AND SITE LOCATION. LOCATIONS THAT, IN THE OPINION OF THE ENGINEER, WILL LEAVE AN UNSIGHTLY APPEARANCE WILL NOT BE APPROVED. ALL DISPOSAL SITES MUST BE APPROVED BY THE KANSAS DEPARTMENT OF HEALTH AND ENVIRONMENT. MATERIAL EITHER STOCKPILED OR DISPOSED OF IN A FLOOD PLAIN WOULD REQUIRE A KANSAS STATE BOARD OF AGRICULTURE PERMIT. ANY MATERIAL DUMPED IN WATERS OF THE UNITED STATES OR WETLANDS IS SUBJECT TO U.S. CORPS OF ENGINEERS PERMITTING REGULATIONS. ANY MATERIAL BURIED OR STOCKPILED BEYOND APPROVED CONSTRUCTION LIMITS WOULD REQUIRE ADDITIONAL ARCHAEOLOGICAL INVESTIGATIONS UNLESS BURIED IN A PREVIOUSLY APPROVED BORROW LOCATION.
9. CONTRACTOR SHALL RESEED AND MULCH IN ACCORDANCE WITH THE REQUIREMENTS OUTLINED ON SHEET 2 OF 14.
10. ALL EARTHWORK COMPACTION SHALL BE 95% STANDARD DENSITY. CONTRACTOR SHALL PROVIDE TEST RESULTS TO CONFIRM COMPACTION.



**INDEX TO DRAWINGS**

SHEET NO.	DESCRIPTION
1	TITLE SHEET
2	LAKE GRADING PLAN
3	BUBBLE MAP
4-7	DETAILS
8	LINE 1
9-10	LINE 2 & 3
11	EROSION CONTROL PLAN
12-14	BMP DETAILS
15	PLAT

**CONSTRUCTION SEQUENCE**

1. PRE-BID MEETING WILL BE HELD AT 2:00 P.M. ON OCTOBER 12, 2006 AT THE CITY OF WICHITA CENTRAL MAINTENANCE FACILITY, 1801 S MCLEAN, WICHITA, KS 67213.
2. DEWATER EXISTING POND AND REMOVE SEDIMENT, MUCK AND CLAY LINER.
3. CONSTRUCT LINE 1 FROM STA. 10+13.2 TO STA. 14+48.5.
4. BEGIN EXCAVATION ON NORTH SIDE OF POND BETWEEN 101 AND 106 (SEE BUBBLE MAP). USE DIRT TO BEGIN FILLING EAST AND SOUTH SIDE OF EXISTING POND. MAINTAIN SLOPE ON EXISTING POND BOTTOM TO DRAIN TO NORTH.
5. CONSTRUCT LINE 2 FROM STA. 10+05.6 TO STA. 15+51.4. BEGIN CONSTRUCTION WHEN POND HAS BEEN FILLED TO PROVIDE ADEQUATE COVER OVER PIPE.
6. CONSTRUCT TEMPORARY OVERFLOW SWALE BETWEEN PONDS AND MAINTAIN POSITIVE DRAINAGE FROM 10" STUB AT STA. 15+51.4 ON LINE 2 TO EXISTING POND.
7. CONSTRUCT LINE 1 FROM STA. 14+48.5 TO STA. 14+69.5 TO DIVERT FLOW TO SOUTH POND. ABANDON EXISTING OUTFLOW PIPE AS SPECIFIED ON SHEET 7 OF 14.
8. EXCAVATE THE REMAINDER OF THE PROPOSED POND AND FILL THE EXISTING POND. CONSTRUCT LINE 3 AND FILL TEMPORARY OVERFLOW SWALE BETWEEN PONDS.
9. UPON COMPLETION OF MASS GRADING, COMPLETE SEEDING.
10. CONTRACTOR SHALL MAKE CONNECTIONS TO EXISTING PIPES IN SUCH A MANNER TO MAINTAIN TOTAL AVAILABLE SITE DETENTION VOLUME AS THE EXISTING DETENTION CELL IS FILLED AND THE NEW CELL IS CUT.
11. CONTRACTOR SHALL COORDINATE CONSTRUCTION WITH DEVELOPER AND BUILDING GENERAL CONTRACTOR. BUILDING GENERAL CONTRACTOR IS PROJECTING A CONSTRUCTION START DATE OF DECEMBER 23, 2006. ALL WORK, WITH THE EXCEPTION OF SEEDING, SHALL BE COMPLETED BY DECEMBER 23, 2006.

**STORM WATER SEWER  
AUBURN HILLS COMMERCIAL  
4TH. ADDITION**

**TITLE SHEET**  
SHEET TITLE  
**468-84108**  
PROJECT NUMBER

SRS / DLM / GJA  
DESIGNED / DRAWN / CHECKED

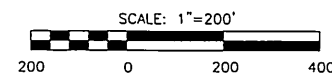
ISSUED  
**Oct. 2006**

REVISED

SHEET NO.  
**1 of 15**

**BENCHMARKS**

BM #1 Chiseled square on the back of curb, lying North of the Northwest corner of Lot 1, Blk. 1  
Elev. = 147.64 (City Datum)  
1335.04 (NGVD 29)



EARTHWORK SUMMARY	
EXCAVATION	17,500 C.Y.
BORROW (CONTRACTOR FURNISHED)	2,000 C.Y.
COMPACTED FILL (95% DENSITY)	19,500 C.Y.

