

**STORM WATER SEWER PLANS
AUBURN HILLS COMMERCIAL
4TH. ADDITION**

**LAKE
GRADING
PLAN**

SHEET TITLE
468-84108
PROJECT NUMBER

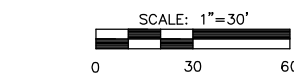
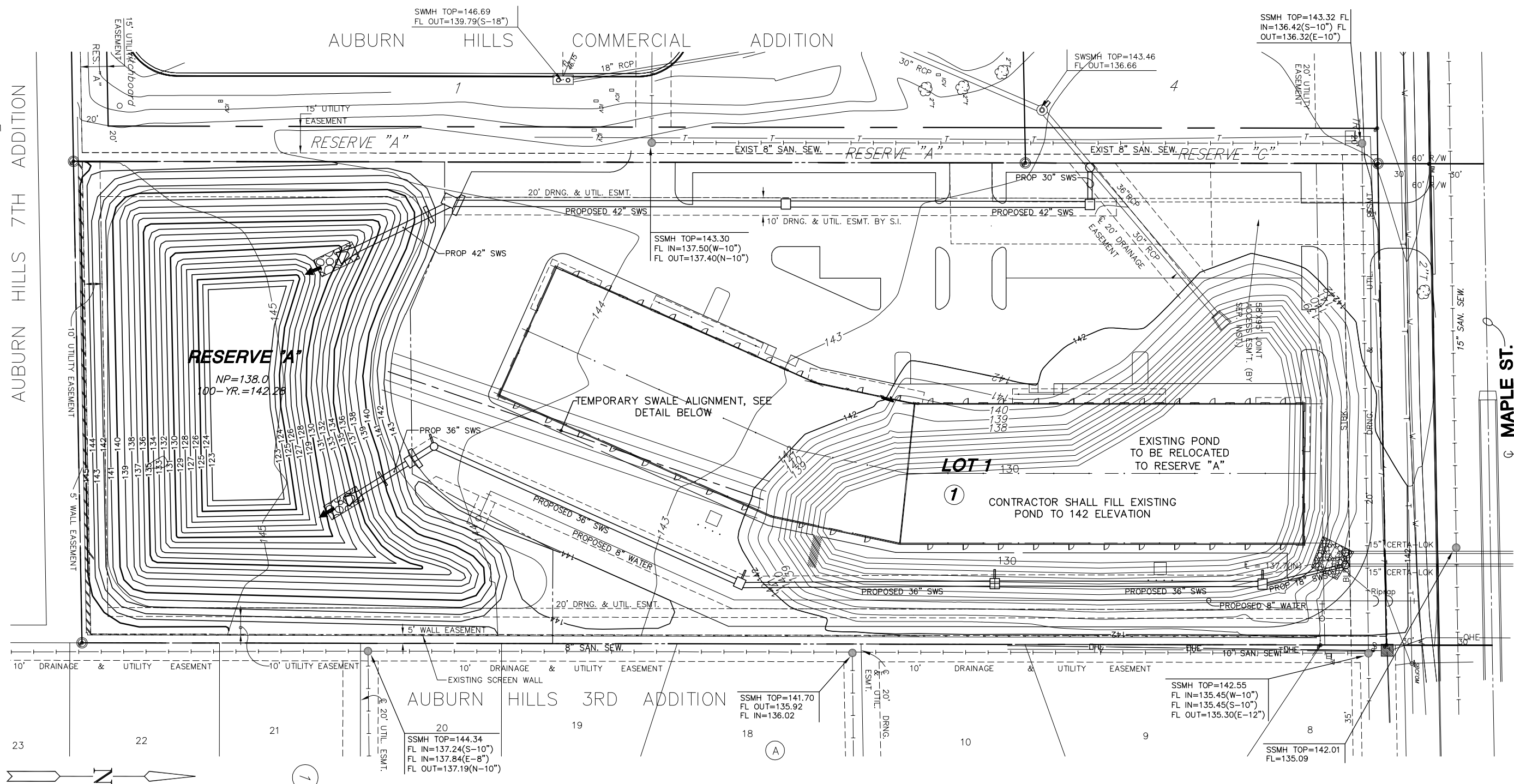
DESIGN BY **SRS**
DRAWN BY **RJD**
CHECKED BY **GJA**

ISSUED
Oct. 2006

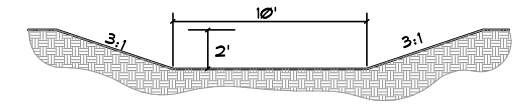
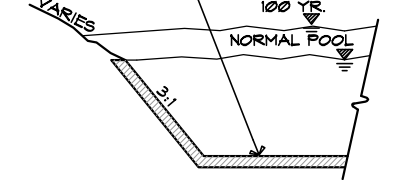
REVISED

SHEET NO.

2 of 15



OVER EXCAVATE 12" OF SOIL. PLACE IN TWO 6" LIFTS CLAY LINER (P1=30 (MIN)), COMPACT TO 2% ABOVE OPTIMUM ASTM D690 95% RELATIVE MAX DENSITY. A PERMEABILITY TEST OF THE LINER MATERIAL SHALL BE PERFORMED BY A GEOTECHNICAL SOILS ENGINEER AT A RANDOM LOCATION AS DETERMINED BY THE PROJECT INSPECTOR AND AT THE CONTRACTORS EXPENSE (1 PER POND). THE CLAY LINER MATERIAL SHALL MEET OR EXCEED A PERMEABILITY RATING VALUE OF 10⁻¹. ALL COST ASSOCIATED WITH THIS WORK SHALL BE SUBSIDIARY TO EARTHWORK ITEMS.



TEMPORARY SWALE
NOT TO SCALE
NOTE: SEE PLAN FOR ALIGNMENT.

LEGEND

- TR - TELEPHONE RISER
- - INLET
- - STORM SEWER PIPE
- - WATER LINE
- - SANITARY SEWER LINE
- - GAS LINE
- - TELEPHONE LINE
- - UNDERGROUND ELECTRIC LINE
- - OVERHEAD TELEPHONE
- - OVERHEAD ELECTRIC
- - UNDERGROUND FIBER OPTIC CABLE
- △ - SECTION CORNER
- - PROPERTY CORNER FOUND
- BM - BENCHMARK
- - EXISTING CONTOURS
- - PROPOSED CONTOURS
- - DECIDUOUS TREE & DIAMETER
- - SIGN
- - FENCE
- - SANITARY SEWER MANHOLE
- - WALL

NOTES

1. DE-WATER EXISTING POND AND REMOVE EXISTING SEDIMENT, MUCK, AND CLAY LINER IN ACCORDANCE WITH SECTION 207 OF DEPARTMENT OF TRANSPORTATION STANDARD SPECIFICATIONS FOR STATE ROAD AND BRIDGE CONSTRUCTION AND THE RECOMMENDATIONS OF A GEOTECHNICAL ENGINEER LICENSED IN THE STATE OF KANSAS.
 2. CONTRACTOR SHALL FILL EXISTING POND TO THE 142 ELEVATION (LEVEL).
 3. CONTRACTOR IS RESPONSIBLE FOR CONSTRUCTING POND LINER FOR THE NEW POND LOCATION. SEE POND LINER DETAIL THIS SHEET.
 4. RESERVE "A" SHALL BE SEEDED AND FERTILIZED WITH WINTER COVER CROP AS FOLLOWS:
AUSTRIAN WINTER PEAS (*Lathyrus hirsutus*) @ 30 LBS./ACRE 10-20-10 @ 175 LBS./ACRE
 5. CONTRACTOR SHALL PROVIDE EROSION PROTECTION THROUGHOUT PROJECT CONSTRUCTION.
 6. SEEDING AREAS SHALL BE PREPARED FOR PLANTING WITH COMMON AGRICULTURAL TECHNIQUES. APPROVE WITH OWNER'S REPRESENTATIVE BEFORE PLANTING.
 7. ALL SEED SHALL BE DISTRIBUTED WITH AN ACCEPTABLE DRILL INTENDED FOR SUCH OPERATIONS, OR OTHER EQUIPMENT APPROVED BY THE OWNER'S REPRESENTATIVE. SEEDING DEPTH SHALL BE 1/4".
 8. ALL SEEDED AREAS SHALL BE IMMEDIATELY MULCHED W/PRAIRIE HAY AT 2 TONS/ACRE. ANCHOR MULCH BY CRIMPING INTO TOPSOIL WITH SUITABLE MECHANICAL EQUIPMENT.
 9. CONTRACTOR IS RESPONSIBLE FOR IMPLEMENTING AND MAINTAINING ALL EROSION CONTROL FOR THIS SITE UNTIL SITE IS TURNED OVER TO BUILDING CONTRACTOR, AT WHICH TIME BUILDING CONTRACTOR WILL TAKE OVER MAINTENANCE OF ALL EROSION CONTROL UNTIL SITE IS TURNED OVER TO OWNER. COST FOR MAINTENANCE OF EROSION CONTROL IS SUBSIDIARY TO BMP'S.
- THIS AREA SHALL BE FINE GRADED AND SURFACE SHALL BE FREE FROM STICKS, STONES OVER 1 1/2" IN SIZE, AND OTHER EXTRANEIOUS MATERIALS PRIOR TO SEEDING.