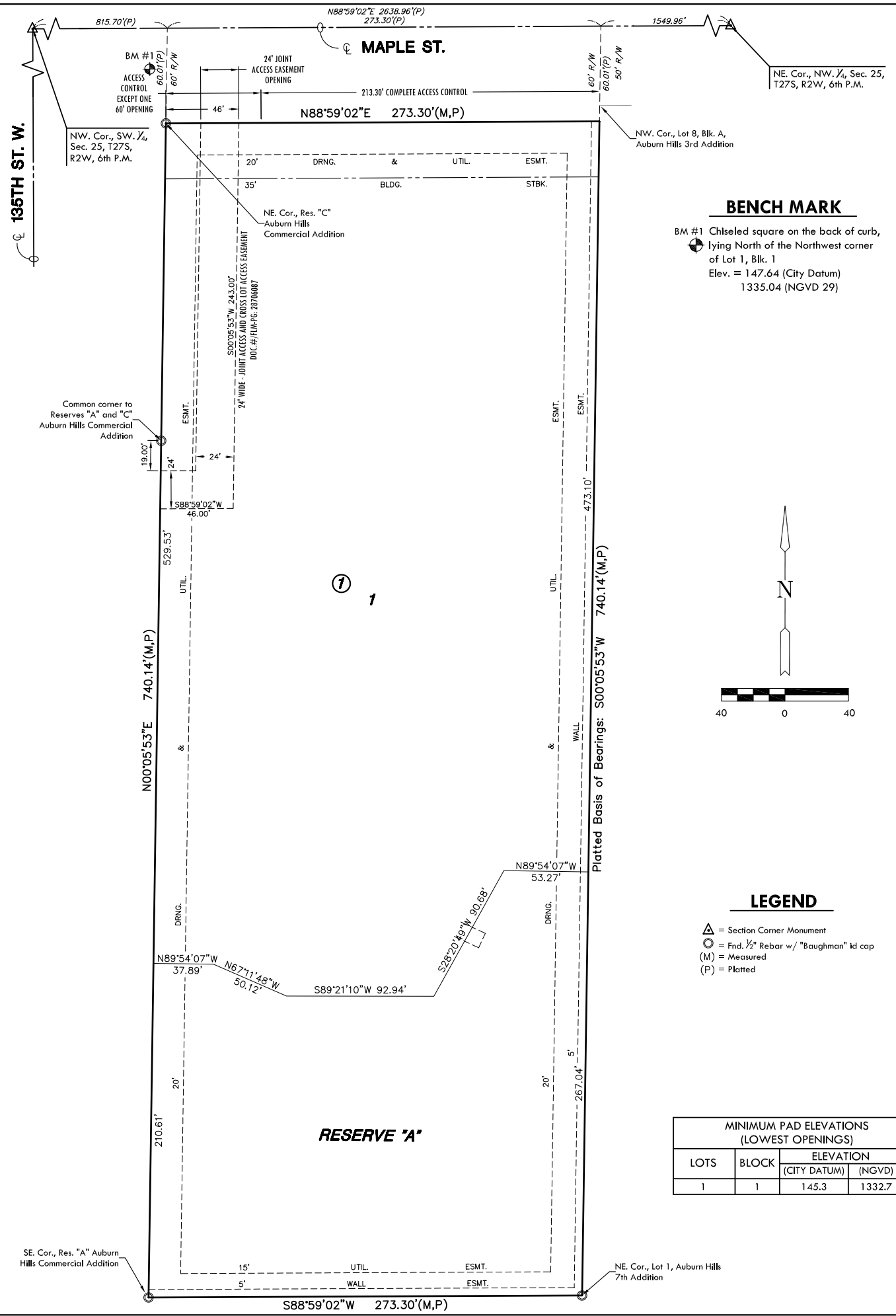


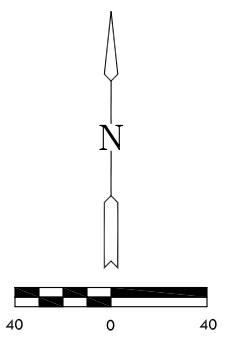
FINAL PLAT

AUBURN HILLS COMMERCIAL 4TH ADDITION

AN ADDITION TO WICHITA, SEDGWICK COUNTY, KANSAS



BENCH MARK
 BM #1 Chiseled square on the back of curb,
 lying North of the Northwest corner
 of Lot 1, Blk. 1
 Elev. = 147.64 (City Datum)
 1335.04 (NGVD 29)



LEGEND

- △ = Section Corner Monument
- = Fnd. 1/2" Rebar w/ "Baughman" id cap
- (M) = Measured
- (P) = Platted

MINIMUM PAD ELEVATIONS (LOWEST OPENINGS)			
LOTS	BLOCK	ELEVATION	
		(CITY DATUM)	(NGVD)
1	1	145.3	1332.7

We, MKEC Engineering Consultants, Inc., a Registered Corporate Land Surveyor in Kansas, do hereby certify that we have been in responsible charge of surveying and platting of "AUBURN HILLS COMMERCIAL 4TH ADDITION" an addition to Wichita, Sedgwick County, Kansas, into a Lot, a Block, and a Reserve, the same being accurately set forth in the accompanying plat and described herein:

A Replat of all of Auburn Hills Commercial 3rd Addition, Wichita, Sedgwick County, Kansas.

All reserves, streets, utility easements, building setbacks, access controls, together with any and all other public dedications within the above described property are hereby vacated and replatted by virtue of K.S.A. 12-512(b).

I hereby certify that the details of this plat are correct to the best of my knowledge and belief this ___ day of _____, 2005.

Gregory J. Allison, PE, LS #1257
 MKEC Engineering Consultants, Inc.
 411 North Webb Road
 Wichita, Kansas 67206

Know all men by these presents that we the undersigned property owners of the land above set forth in the Registered Land Surveyor's Certificate, have caused the same to be surveyed and platted into a Lot, a Block, and a Reserve, the same to be known as "AUBURN HILLS COMMERCIAL 4TH ADDITION," an addition to Wichita, Sedgwick County, Kansas.

Easements for the construction and maintenance of public utilities and drainage, as indicated on the accompanying plat are hereby granted to the public.

The streets are hereby dedicated to and for the use of the public.

All abutters right to access to or from Maple Street over and across the North line of "AUBURN HILLS COMMERCIAL 4TH ADDITION," are hereby granted to the appropriate governing body, except at one location providing access as indicated hereon.

A drainage plan has been developed for this plat and all drainage easements, right-of-way, or reserves shall remain at established grades or as modified with the approval of the applicable City or County Engineer, and unobstructed to allow for the conveyance of storm water.

Lot 1, Block 1, is required to adhere to the minimum pad elevation as shown on the "Minimum Pad Elevations" table.

Reserve "A" is platted for utilities in designated areas, drainage, wall on perimeter as shown, ponds, landscaping, irrigation, open space, monuments, and water features. The Reserve shall be owned and maintained by the Lot Owner Association and or the owners of Lot 1, Block 1.

The 5' Wall Easement along South and East lines of Lot 1, Block 1 and Reserve "A", as shown, is hereby platted for the construction and maintenance of a private wall. Utilities may cross the wall easement.

NEVILLE FAMILY TRUST III, dated September 10, 1996

_____, Co-Trustee
 Rita A. Neville-Landwehr, Co-Trustee

_____, Co-Trustee
 Gregory A. Neville, Co-Trustee

_____, Co-Trustee
 Alvin L. Neville, Co-Trustee

STATE OF KANSAS, SEDGWICK COUNTY} ss:

This instrument was acknowledged before me on ___ day of _____, 2005, by Rita A. Neville-Landwehr, Gregory A. Neville, Alvin L. Neville, Co-Trustees, Neville Family Trust III, dated September 10, 1996.
 IN WITNESS WHEREOF, I have hereunto set my hand and affixed my official seal, the day and year last above written.

 Notary Public
 My Term Expires: _____
 Sign and print below

STATE OF KANSAS, SEDGWICK COUNTY} ss:

This plat of "AUBURN HILLS COMMERCIAL 4TH ADDITION" has been submitted to and approved by the Wichita-Sedgwick County Metropolitan Area Planning Commission, Wichita, Kansas.

Dated this ___ day of _____, 2005

WICHITA-SEDGWICK COUNTY METROPOLITAN AREA PLANNING COMMISSION

_____, Chair
 Morris K. Dunlap, Chair

Attest:
 _____, Secretary
 John L. Schlegel, Secretary

This plat of "AUBURN HILLS COMMERCIAL 4TH ADDITION" has been submitted to and approved by the City Council of the City of Wichita, Sedgwick County, Kansas. The easements, rights-of-way and other public dedications are hereby accepted by the City Council. Dated this ___ day of _____, 2005.

At the direction of the City Council.

_____, Mayor
 Carlos Mayans, Mayor

Attest:
 _____, City Clerk
 Karen Sublett, City Clerk

STATE OF KANSAS, SEDGWICK COUNTY} ss:

Entered on transfer record this ___ day of _____, 2005

_____, County Clerk
 Don Brace, County Clerk

This is to certify that this instrument was filed for record in the Register of Deeds office this ___ day of _____, 2005, at _____ o'clock _____ M, and is duly recorded.

 DOCUMENT NO.

_____, Register of Deeds
 Bill Meek, Register of Deeds

Attest:
 _____, Deputy
 Tonya E. Buckingham, Deputy

Reviewed in accordance with K.S.A. 58-2005 on this ___ day of _____, 2005.

_____, Deputy County Surveyor
 Tricia L. Robello, LS #1246
 Deputy County Surveyor
 Sedgwick County, Kansas

