

GENERAL NOTES

- UNDERGROUND UTILITY SERVICE LINES AND OVERHEAD UTILITY POLE LINES ARE TO BE ADJUSTED AS NECESSARY BY OTHERS PRIOR TO CONSTRUCTION UNLESS THE PLANS SPECIFICALLY CALL FOR THEIR ADJUSTMENT BY THE CONTRACTOR. EXISTING UTILITIES AND THEIR LOCATION, AS SHOWN ON THE PLANS, REPRESENT THE BEST INFORMATION OBTAINABLE FOR DESIGN. LOCATION INFORMATION HAS BEEN OBTAINED FROM THE VARIOUS UTILITY COMPANIES AND IS EITHER FROM COMPANY RECORD DRAWINGS OR COMPANY PROVIDED FIELD LOCATIONS. THE CONTRACTOR WILL BE REQUIRED TO WORK AROUND EXISTING UTILITIES WITHIN THE RIGHT-OF-WAY WHICH DO NOT CONFLICT WITH PROPOSED CONSTRUCTION.
- RUBBLE FROM THE REMOVAL OF MISCELLANEOUS STRUCTURES SHALL BE DISPOSED OF ON SITES TO BE PROVIDED BY THE CONTRACTOR AND APPROVED AS NOTED BELOW.

ALL DISPOSAL SITES MUST BE APPROVED BY THE KANSAS DEPARTMENT OF HEALTH AND ENVIRONMENT. MATERIAL EITHER STOCKPILED OR DISPOSED OF IN A FLOOD PLAIN WOULD REQUIRE A KANSAS STATE BOARD OF AGRICULTURE PERMIT. ANY MATERIAL DUMPED IN WATERS OF THE UNITED STATES OR WETLANDS IS SUBJECT TO U.S. CORPS OF ENGINEERS PERMITTING REGULATIONS. ANY MATERIAL BURIED OR STOCKPILED BEYOND APPROVED CONSTRUCTION LIMITS WOULD REQUIRE ADDITIONAL ARCHEOLOGICAL INVESTIGATIONS UNLESS BURIED IN A PREVIOUSLY APPROVED BORROW LOCATION.
- CONTRACTOR SHALL SATISFY HIMSELF OF SURFACE AND SUBSURFACE CONDITIONS PRIOR TO BIDDING.
- CONTRACTOR SHALL PROVIDE A MINIMUM SEVENTY-TWO (72) HOUR ADVANCE NOTICE (EXCLUDING WEEKENDS AND HOLIDAYS) PRIOR TO BEGINNING ANY EXCAVATION, TO KANSAS ONE-CALL SYSTEM, A UTILITY LOCATION SERVICE, AT (316) 687-2470 TO REQUEST THAT THE FOLLOWING UTILITY COMPANIES LOCATE ALL EXISTING LINES WITHIN THE PROJECT AREA: KANSAS GAS SERVICE, WESTAR ENERGY, SBC, COX COMMUNICATIONS, CITY OF WICHITA SEWER MAINTENANCE AND CITY OF WICHITA WATER DEPARTMENT.
- CONTACT WESTAR ENERGY (OR ITS SUCCESSOR) ELECTRIC TRANSMISSION LINE ENGINEERING DEPARTMENT (CURRENTLY 785-575-8167) BEFORE CONDUCTING ANY PROPOSED CONSTRUCTION ACTIVITIES THAT COULD PLACE PEOPLE, EQUIPMENT, OR FACILITIES WITHIN WESTAR ENERGY'S EASEMENT DESIGNATED AS BOOK 445 PAGE 475, 476 DATED JUNE 2, 1959.
- THE CONTRACTOR SHALL BE RESPONSIBLE FOR PRESERVING PROPERTY IRONS. THE CONTRACTOR WILL BE REQUIRED TO RE-ESTABLISH ANY PROPERTY IRONS WHICH ARE DAMAGED OR DESTROYED BY HIS CONSTRUCTION OPERATIONS OR COVERED BY 12" (INCHES) OR MORE OF FILL WITH THIS PROJECT. SUCH IRONS SHALL BE RE-ESTABLISHED BY A LICENSED LAND SURVEYOR IN ACCORDANCE WITH STATE LAWS.

WASTE EXCAVATION

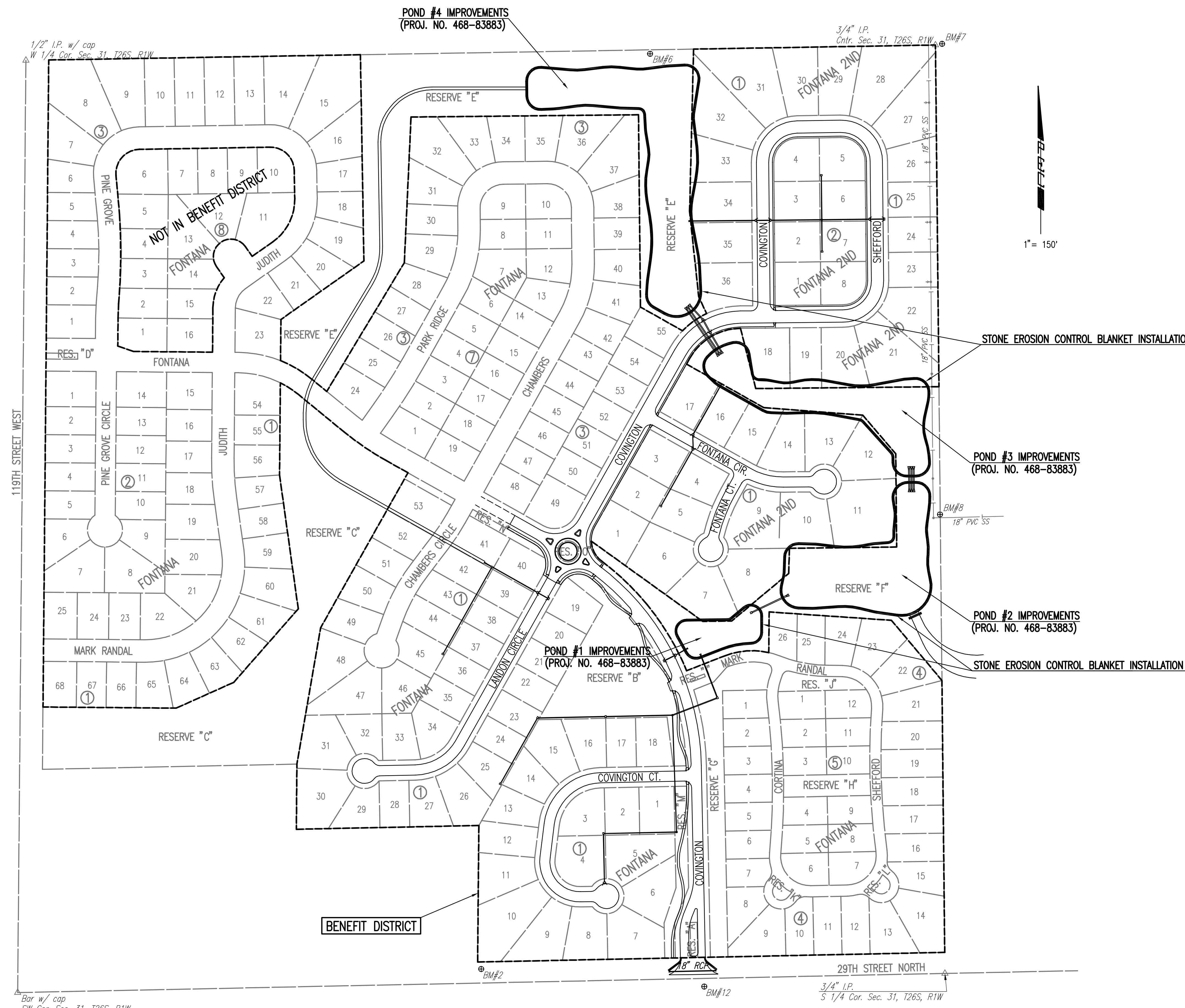
EXCESS EXCAVATED MATERIAL FROM THIS PROJECT SHALL REMAIN ON SITE AND MAY BE WASTED ON ADJACENT LOTS, OUTSIDE STREET RIGHT-OF-WAY AND EASEMENTS, UNIFORMLY SPREADING SUCH MATERIAL TO A MAXIMUM DEPTH OF 3 INCHES.

BM #6 - SET R.R. SPIKE IN SOUTH FACE OF SOUTH POLE, 2 POLE ELECTRIC LINE STRUCTURE, 2ND STRUCTURE WEST OF CENTER SECTION 31-26S-1W.
ELEV. = 168.755

BM #7 - SET "T" POST ON PI OF DITCH BERM RUNNING N-E, ±20' EAST OF CENTER SECTION 31-26S-1W.
ELEV. = 168.93

BM #8 - SET "T" POST ±15' SOUTH OF NORTHWEST CORNER OF SOUTHWEST 1/4 OF SOUTHEAST 1/4 SECTION 31-26S-1W.
ELEV. = 169.43

BM #12 - "T" POST 24' SOUTH OF CENTERLINE OF 29TH STREET NORTH, 33' EAST OF CENTERLINE OF COVINGTON STREET TO THE NORTH, NORTH OF A POWER POLE IN CULTIVATED FIELD.
ELEV. = 172.72



No.	Revision	By	Date
FONTANA & FONTANA 2ND ADDITION-PHASE 1 STORM WATER DRAIN NO. 296 KEY MAP & GENERAL NOTES JAMES L. ARMOUR, P.E.- CITY ENGINEER CITY OF WICHITA PROJECT NO. 468-84196 Professional Engineering Consultants, P.A. 303 S. TOPEKA • WICHITA, KANSAS 67202 316-262-2691 • FAX 316-262-3003			
Designed by	BDB, BMM	Job No.	35-04485-005
Drawn by	BMM	Date	SEPTEMBER 2004
			Sheet 2 of 5

Served 08-25-2006 3:41:24 PM by BLS
 Plot Scale 1:150 08-28-2006 7:29:45 AM by REJ
 J:\SENT001\2004\04485\005\2006-08-25 to City DWG\02-keymap