

Street Paving and Incidental Storm Water Sewer For FORESTVIEW

to serve

LIBERTY PARK 2ND & 3RD ADDITION - PHASE I

Forestview from the north line of Lot 39, Block A, Liberty Park 2nd, south to the south line of Lot 27, Block C, Liberty Park 3rd
Alderny and Alderny Cir. from the east line of Forestview, east and south to and including the cul-de-sac
10th St. N. from the west line of Forestview, west to 135th Street West.

Forestview Ct. (Lots 9 through 23, Block A, Liberty Park 2nd) from the east line of Forestview, east to and including the cul-de-sac
10th N. Ct. (Lots 43 through 49, Block A, Liberty Park 2nd) from the north line of 10th St. N., north to and including the cul-de-sac
10th N. Ct. (Lots 1 through 8, Block A, Liberty Park 3rd) from the south line of 10th St. N., south to and including the cul-de-sac
Alderny Ct. from the south line of Alderny, south to and including the cul-de-sac.

CITY OF WICHITA, KANSAS

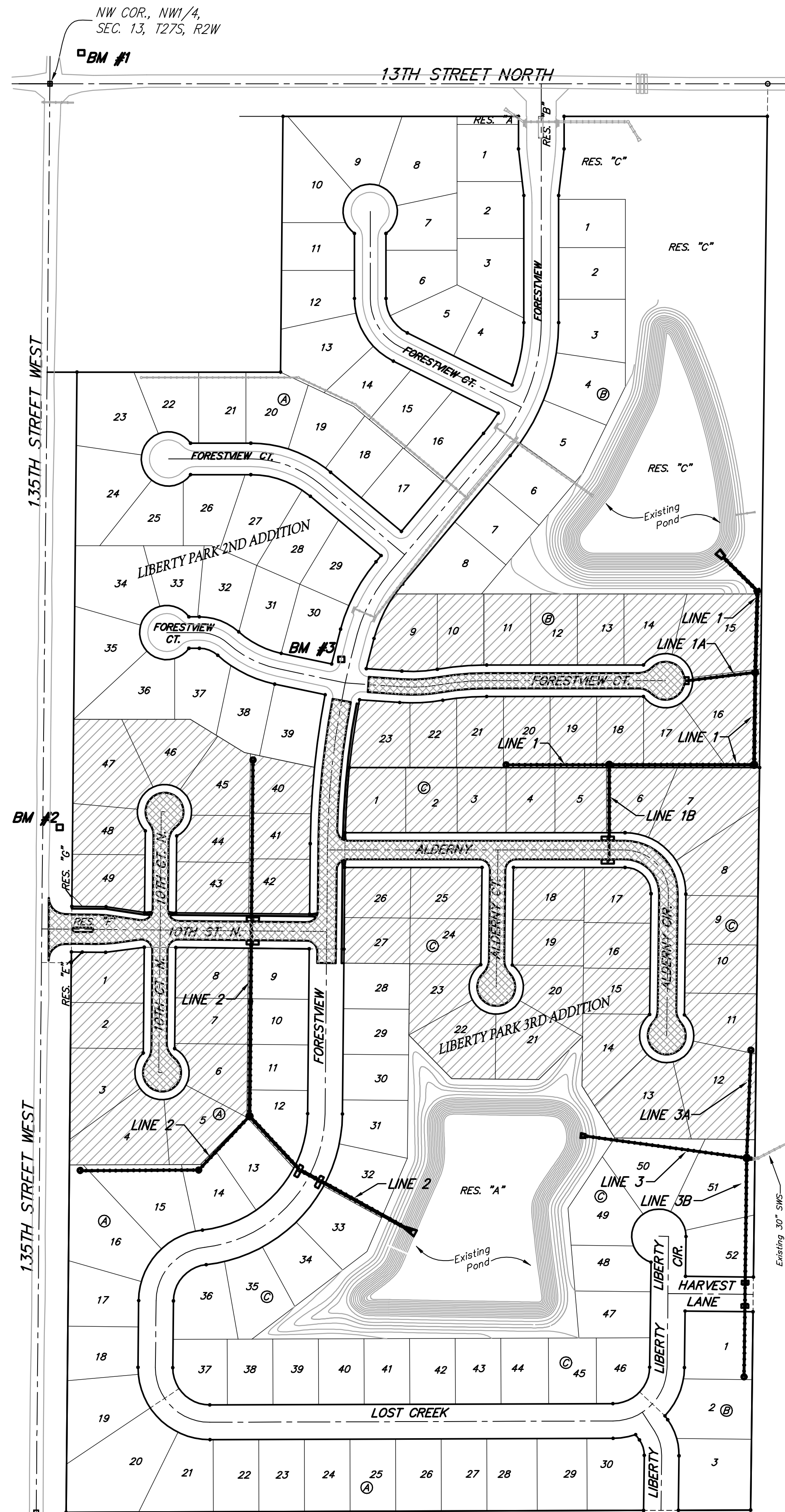
James L. Armour, P.E. City Engineer

Project Number

472-83881

O.C.A. Number

765985



Scale: 1" = 150'

Benchmarks

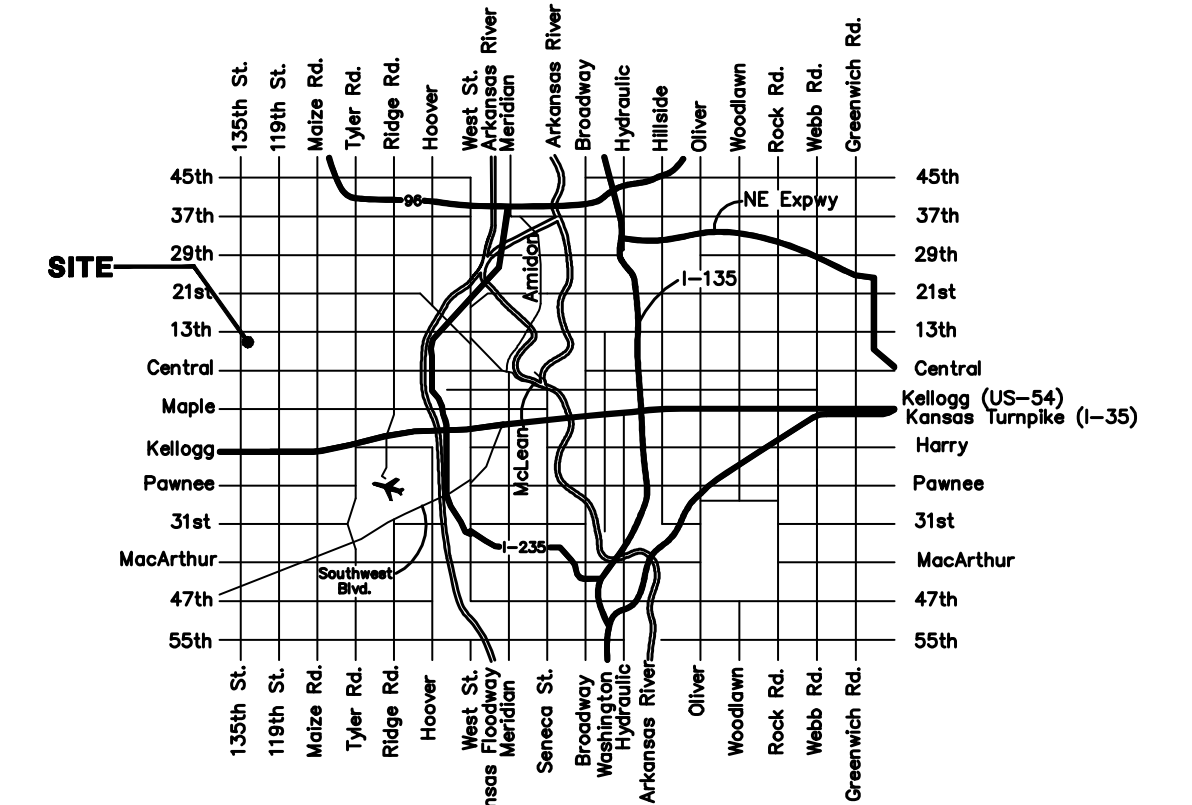
- BM #1: C.O.W. benchmark disk. 56' E and 55' N of CL 135th St. W. & 13th St. N. Elev. = 167.83 (City Datum)
- BM #2: RR spike in east face of power pole 1/4 mile S & 31' E of intersection of 135th St. W. & 13th St. N. Elev. = 170.85 (City Datum)
- BM #3: "□" cut in top of curb N end of W curb return of Forest View & Forest View Ct. Elev. = 165.07 (City Datum)

Sheet Index

Title Sheet	1
35' Pavement Detail	2
29' Pavement Detail	3
Sign Detail	4
Miscellaneous Details	5
Entrance Details	6
10th St North	7
10th Ct N (Lots 1-8, Block A)	8
10th Ct N (Lots 43-49, Block A)	9
Forestview	10-11
Alderny	12-13
Alderny Cir	14
Alderny Ct	15
Forestview Ct	16-17
SWS Line 1	18-19
SWS Line 1A & SWS Line 1B	20
SWS Line 2	21-23
SWS Line 2A	24
SWS Line 3	25
SWS Line 3A	26
SWS Line 3B	27
Easement Grading	28
Coordinate Sheet	29
Erosion Control Plan	30
Soil Erosion BMP Details	31-34
Headwall Details	35
Std. Drop Inlet Detail	36
Shallow Manhole Detail	37
Special Yard Inlet Detail	38
Std. Type 1A Single Inlet Detail	39
Std. Type 1A Double Inlet Detail	40
Earthwork Cross Sections	41-52
Liberty Park 3rd Addn. Plat	53A
Liberty Park 2nd Addn. Plat	53B

GENERAL NOTES:

1. Contractor will be required to provide notice to utility companies a minimum of forty-eight (48) hours prior to any excavation, as follows:
Kansas One-Call 687-2470
The Contractor must notify the following in case of an emergency:
Cox Communications 262-4270
Kansas Gas Service 1-888-482-4950
Westar Energy 383-8650
Aquila Energy 1-800-303-0357
SBC 268-2245
City of Wichita Water Dept. 268-4563
City of Wichita Sewer Maint. 268-4024
City of Wichita Storm Sewer Maint. 268-4090
City of Wichita Traffic Maint. 268-4034
Conaco Pipeline Co. 1-800-231-2551
Southern Star Pipeline Co. 529-6600
Phillips Pipeline Co. 1-800-766-8230
Jayhawk Pipeline Co. 1-888-542-9575
2. Utility service lines, poles, valve boxes, meters, and etcetera are to be adjusted as necessary by others prior to construction unless the plans specifically call for their adjustment by the Contractor or unless the plans specifically identify a utility to be adjusted by its owner during construction. Existing utilities and their location, as shown on the plans, represent the best information obtainable for design. The contractor will be required to work around existing utilities within the right-of-way which do not conflict with proposed construction.
3. Trees and shrubs in public right-of-way which are in direct conflict with proposed new construction shall be removed by the Contractor with the Engineer's approval. Trees and shrubs which are not in direct conflict with proposed new construction shall be saved and protected from damage.
4. All areas disturbed during construction shall be seeded at 300 lbs./acre with Rye Grass immediately following construction in that area. Contractor shall prepare ground per City Specifications.
5. Rubble from the removal of miscellaneous structures shall be disposed of on sites to be provided by the Contractor. These sites shall be approved by the Engineer as to suitability, appearance and site location. Locations that, in the opinion of the Engineer, will leave an unsightly appearance will not be approved. All disposal sites must be approved by the Kansas Department of Health and Environment. Material either stockpiled or disposed of in a flood plain would a Kansas State Board of Agriculture permit. Any material dumped in waters of the United States or wetlands is subject to U.S. Corps. of Engineers permitting regulations. Any material buried or stockpiled beyond approved construction limits would require additional archaeological investigations unless buried in a previously approved borrow location.
6. The Contractor shall be responsible for preserving property irons. The Contractor will be required to re-establish any property irons which are damaged or destroyed by his construction operations. Such irons shall be re-established by a licensed land surveyor in accordance with state law.
7. A saw cut of at least one-half the depth of existing surface courses of one-fourth the depth of the existing total pavement thickness shall be provided at locations where proposed construction abuts as existing surface course or pavement is required. Sawed joint to facilitate removal within three (3) feet of existing joints will not be permitted and for such instances the limits of removal shall extend to the existing joint. Such saw cuts will not be paid for directly and this cost shall be considered as subsidiary to the removal of the surface or pavement.
8. All existing and proposed erosion control measures including silt fencing, erosion control mat, straw bales, inlet barriers, and const. entrance shall be maintained throughout construction by the contractor and until project is accepted by the City of Wichita. The on-site engineer shall complete weekly reports on the status of erosion control measures. The contractor shall be required to comply with maintenance and/or replacement of erosion control measures as determined by the on-site engineer until project is accepted by City of Wichita. Maintenance and/or replacement of erosion control measures to be paid by L.S. bid item "Site Clearing & Restoration."
9. The Contractor shall give all property owners and/or tenants of developed property abutting the construction of this project a minimum of ten (10) days advance notice prior to start of construction.
10. All excess excavation shall remain on site and be stock piled at a location to be determined by the Engineer.
11. The developer of this project is Paul E. Kelsey, and may be reached at (316) 722-1077



Vicinity Map

Project Earthwork Totals	Excavation	Loose Fill	Compacted Fill
Easement Grading	604	382	N/A
Street (R/W)	6,739	482	5
Project Total	7,343	864	5
Total Project Length			
3,226 L.F. = 0.61 Miles			

Baughman Company, P.A. 315 Ellis St. Wichita, KS 67211 P 316-262-7271 F 316-262-0149
ENGINEERING | SURVEYING | PLANNING | LANDSCAPE ARCHITECTURE