

BENCHMARKS:
 BM #1: C.O.W. benchmark disk.
 56' E and 55' N of CL 135th
 St. W. & 13th St. N.
 Elev. = 167.83 (City Datum)
 BM #2: RR spike in east face
 of power pole 1/4 mile S &
 31' E of intersection of 135th
 St. W. & 13th St. N.
 Elev. = 170.85 (City Datum)
 BM #3: "□" cut in top of curb
 N end of W curb return of
 Forest View & Forest View Ct.
 Elev. = 165.07 (City Datum)

LINE 3B

LIBERTY PARK 3RD ADDITION

Sta. 0+13.9, Line 3=
 Sta. 0+00, Line 3A=
 Sta. 0+00, Line 3B
 Construct special shallow
 manhole (6' Dia.) w/ grated
 lid (Neenah R-2501 or
 equivalent)
 Top Elev. = 158.50

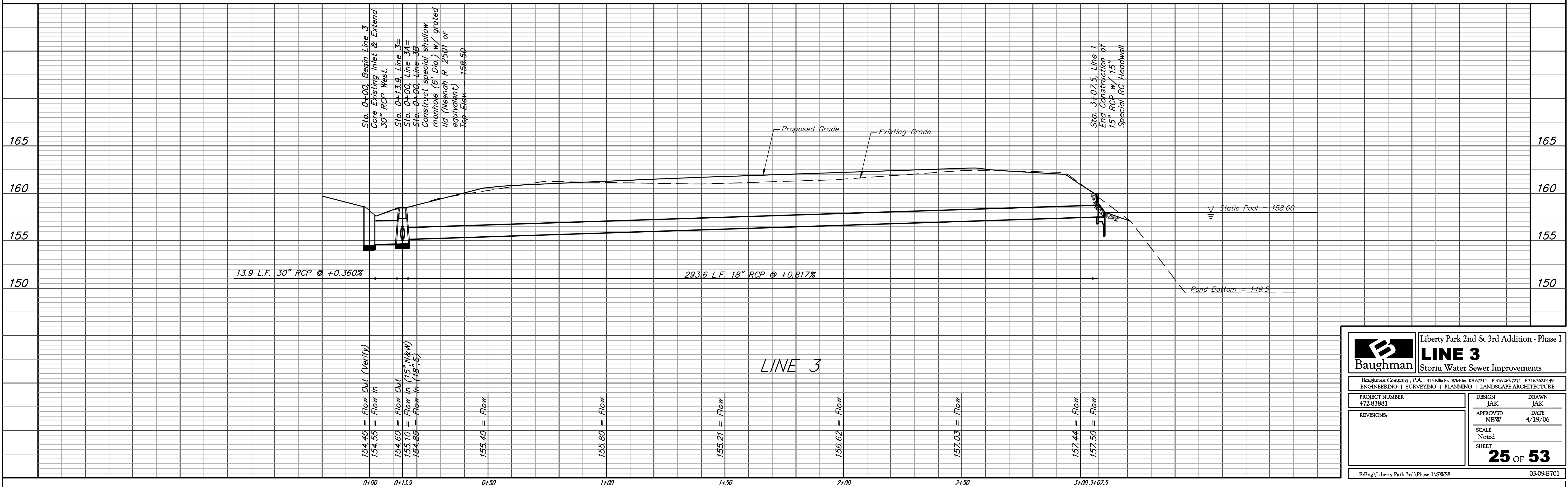
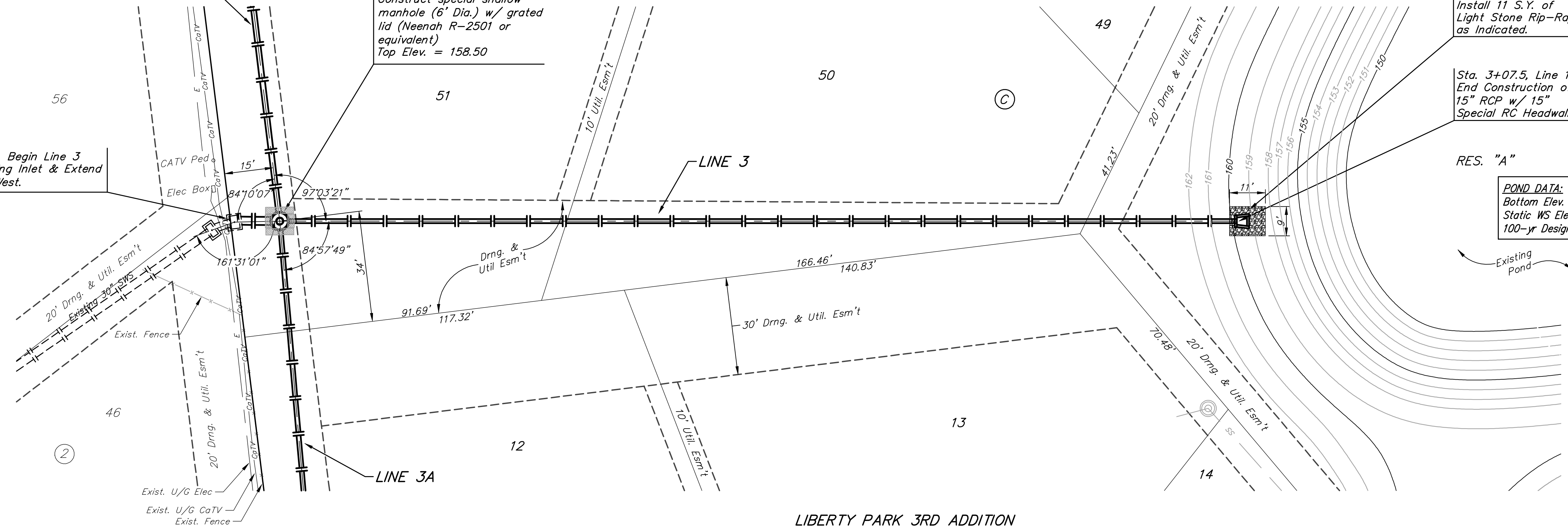
Sta. 0+00, Begin Line 3
 Core Existing Inlet & Extend
 30" RCP West.

Install 11 S.Y. of
 Light Stone Rip-Rap
 as Indicated.

Sta. 3+07.5, Line 1
 End Construction of
 15" RCP w/ 15"
 Special RC Headwall

SCALE:
 1" = 20' HORIZONTAL
 1" = 5' VERTICAL
 • = IRON

RES. "A"
POND DATA:
 Bottom Elev. = 149.5 City Datum
 Static WS Elev. = 158.0 City Datum
 100-yr Design WS Elev. = 160.7 City Datum



Baughman Liberty Park 2nd & 3rd Addition - Phase I
LINE 3
 Storm Water Sewer Improvements

ENGINEERING | SURVEYING | PLANNING | LANDSCAPE ARCHITECTURE

PROJECT NUMBER 472-83881	DESIGN JAK	DRAWN JAK
REVISIONS:	APPROVED NBW	DATE 4/19/06
SCALE Noted		SHEET 25 OF 53

E:\Eng\Liberty Park 3rd\Phase I\SWSS 03-09-E701