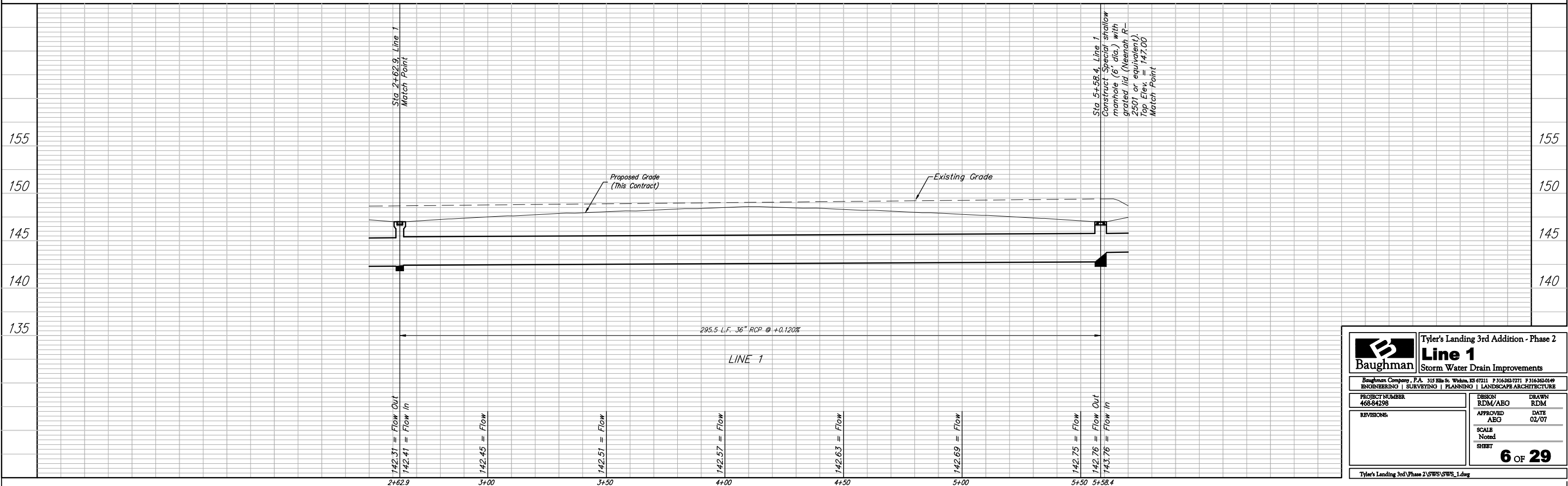
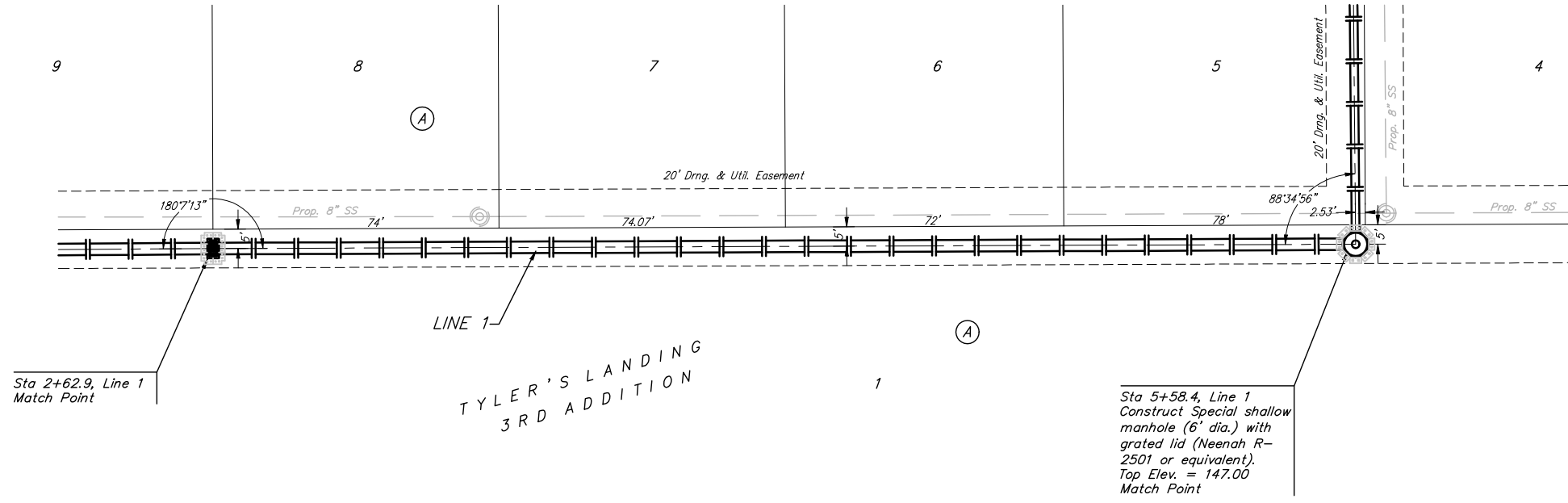


Benchmarks:
 BM #1: "□" Cut in Middle of Curb
 Inlet Top, North Curb of Conrey,
 Adjacent to SW Corner of Lot 14,
 Block A, Tyler's Landing 3rd Addition.
 Elev. = 150.29 (1337.69 M.S.L.)

BM #2: "□" Cut in Top of East Curb
 of High Point, 10' South of End of
 Return. Adjacent to Lot 1, Block D,
 Tyler's Landing Addition.
 Elev. = 155.28 (1342.68 M.S.L.)

Scale: 1" = 20' Horizontal
 1" = 5' Vertical
 • = Iron



	Tyler's Landing 3rd Addition - Phase 2	
	Line 1	
Storm Water Drain Improvements		
<small>Baughman Company, P.A. 315 Ellis St. Woburn, MA 02111 P 316-262-7771 F 316-262-0149 ENGINEERING SURVEYING PLANNING LANDSCAPE ARCHITECTURE</small>		
<small>PROJECT NUMBER 468-84298</small>	<small>DESIGN RDM/ABG</small>	<small>DRAWN RDM</small>
<small>REVISIONS</small>	<small>APPROVED ABG</small>	<small>DATE 02/07</small>
<small>SCALE Noted</small>		<small>SHEET 6 OF 29</small>
<small>Tyler's Landing 3rd Phase 2\SW\SW_S_L.dwg</small>		