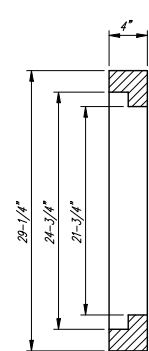
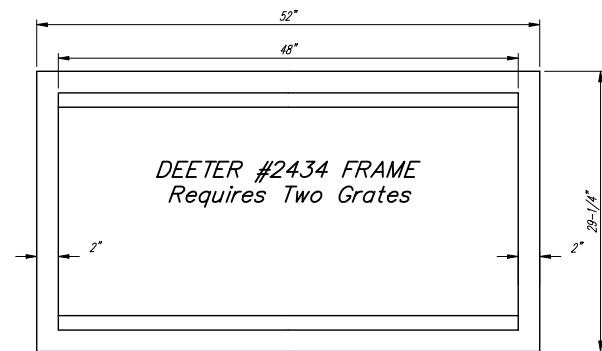


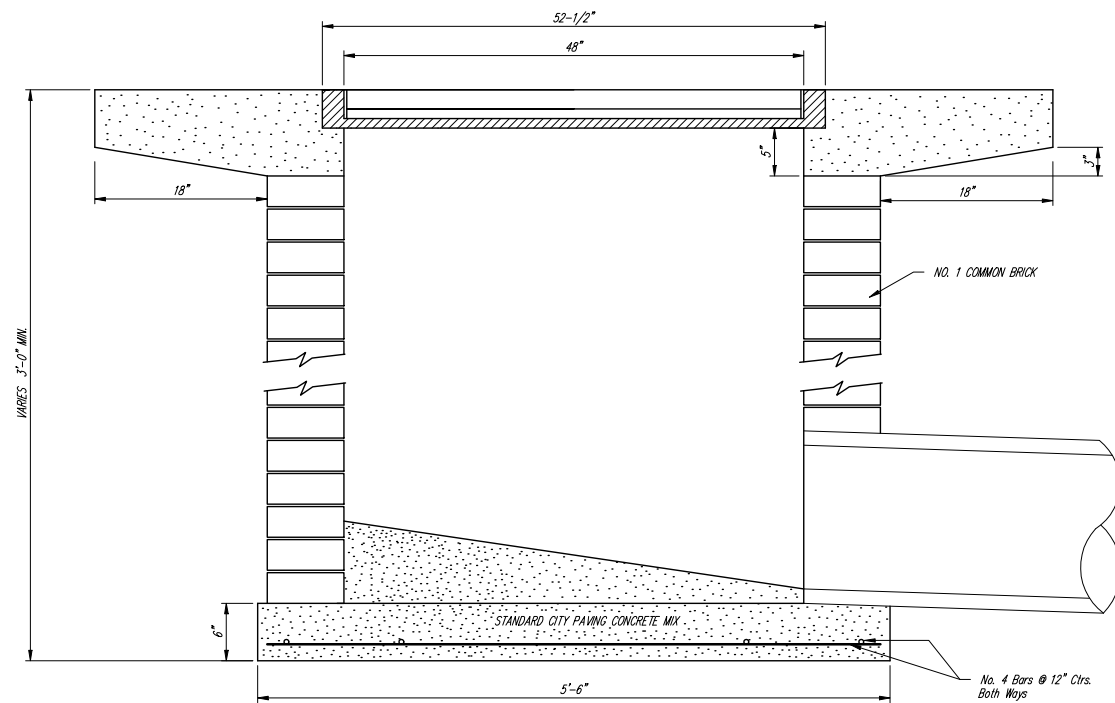
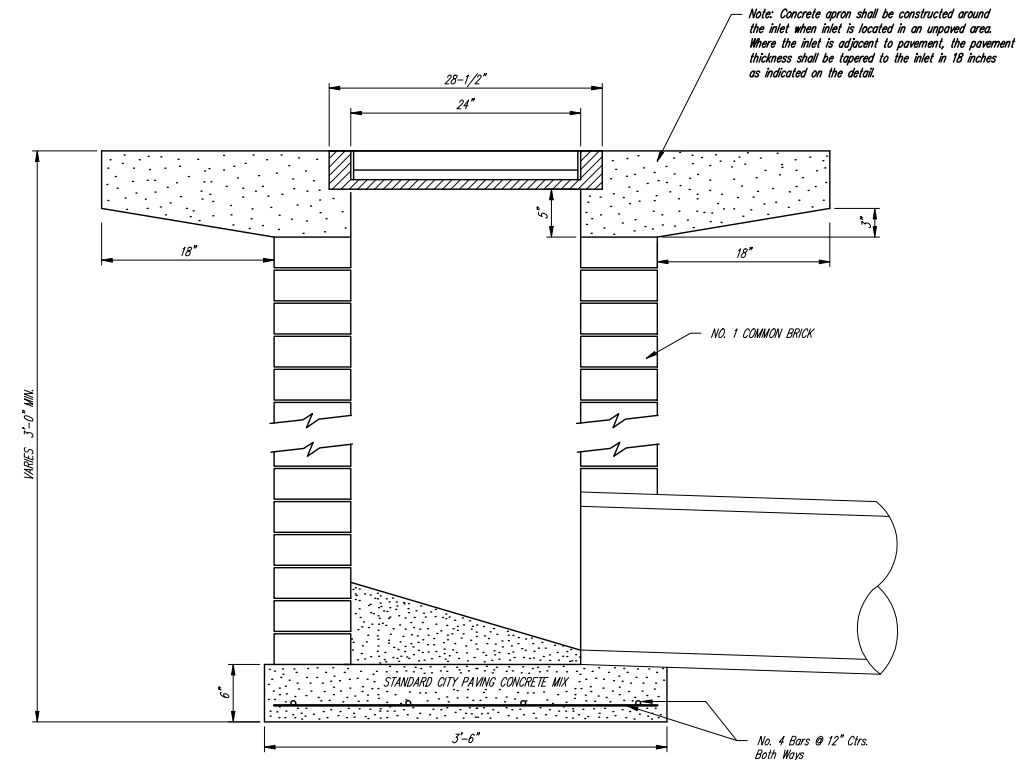
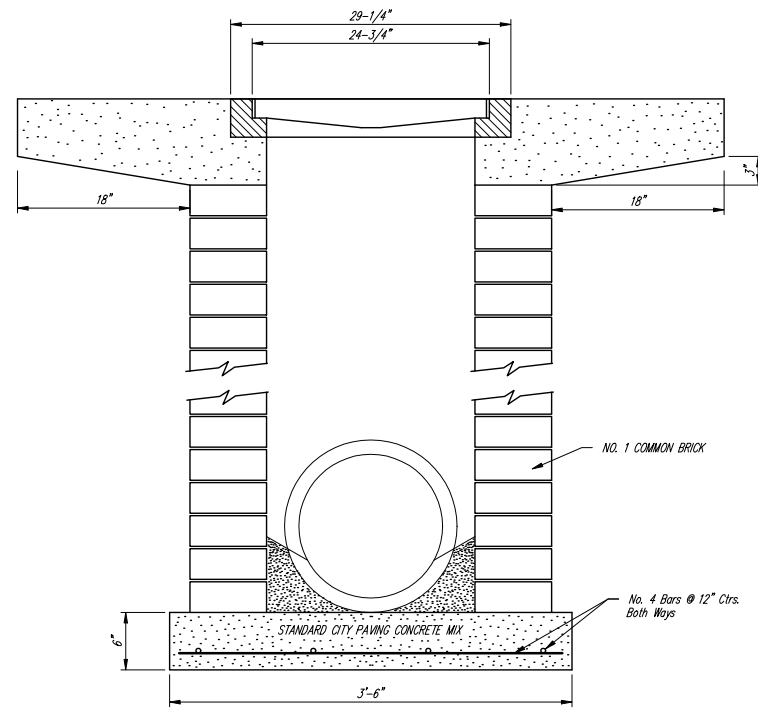
NOTE: Grates shall be imprinted on the top surface with "CITY OF WICHITA" using letters at least 1" in height. Other marking methods may be approved by the engineer.

DEETER #2433 GRATE

24" x 24" Frame and Grate Detail



Double 24" x 24" Frame Detail



		City of Wichita Standard	
		<b>Drop Inlet Detail</b>	
Baughman Company, P.A. 315 8th St. Wichita, KS 67211 P 316262-7271 F 316262-0149			
ENGINEERING   SURVEYING   PLANNING   LANDSCAPE ARCHITECTURE			
PROJECT NUMBER 468-64298	DESIGN C.O.W.	DRAWN Staff	
REVISIONS:	APPROVED	DATE 02/07	
	SCALE None	SHEET	
			<b>22 OF 29</b>
F:\Eng\Details\Sewer\DROPINT2.dwg			