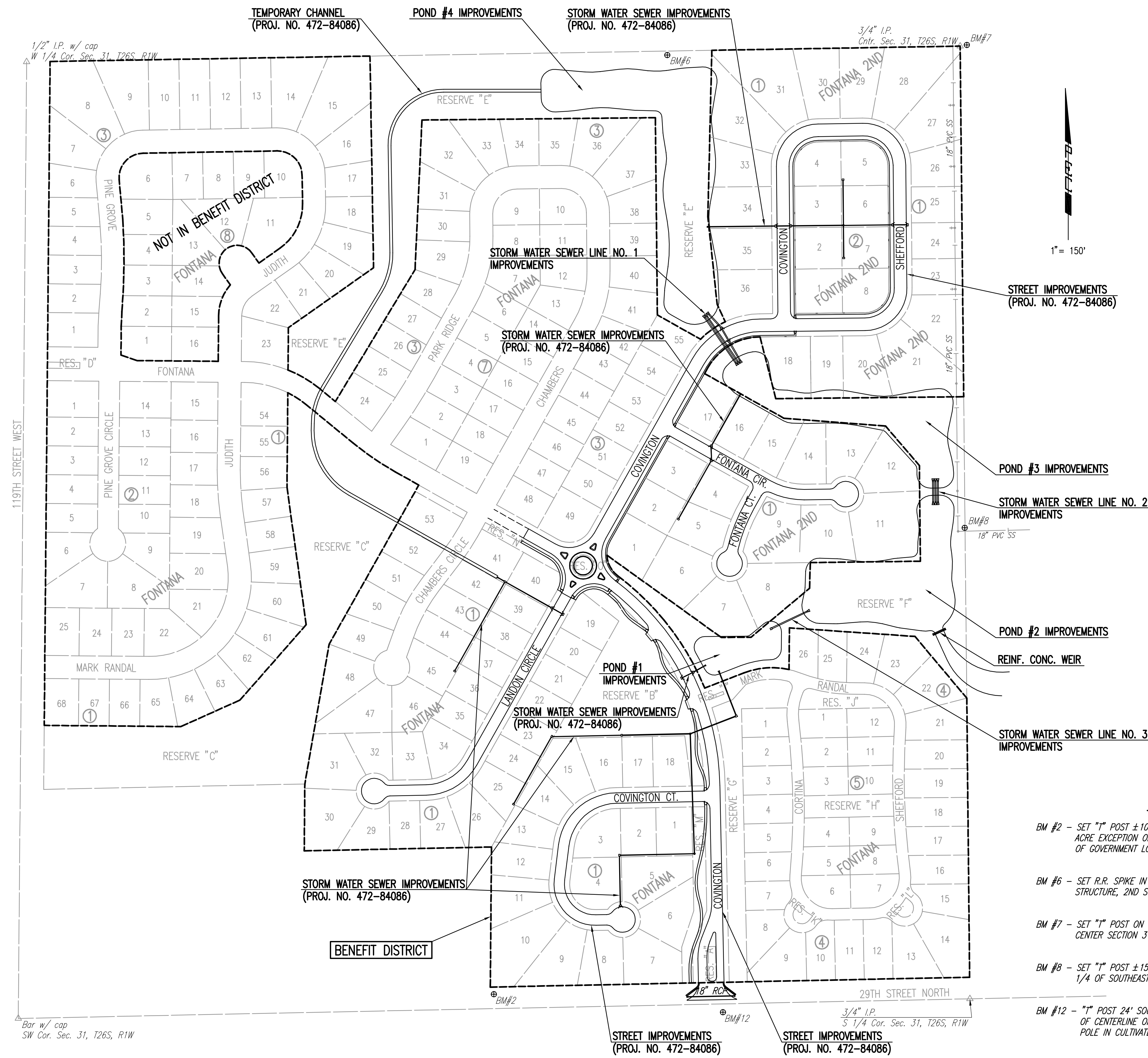


**GENERAL NOTES**

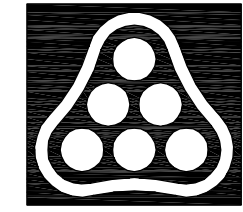
- UNDERGROUND UTILITY SERVICE LINES AND OVERHEAD UTILITY POLE LINES ARE TO BE ADJUSTED AS NECESSARY BY OTHERS PRIOR TO CONSTRUCTION UNLESS THE PLANS SPECIFICALLY CALL FOR THEIR ADJUSTMENT BY THE CONTRACTOR. EXISTING UTILITIES AND THEIR LOCATION, AS SHOWN ON THE PLANS, REPRESENT THE BEST INFORMATION OBTAINABLE FOR DESIGN. LOCATION INFORMATION HAS BEEN OBTAINED FROM THE VARIOUS UTILITY COMPANIES AND IS EITHER FROM COMPANY RECORD DRAWINGS OR COMPANY PROVIDED FIELD LOCATIONS. THE CONTRACTOR WILL BE REQUIRED TO WORK AROUND EXISTING UTILITIES WITHIN THE RIGHT-OF-WAY WHICH DO NOT CONFLICT WITH PROPOSED CONSTRUCTION.
- TREES AND SHRUBS IN PUBLIC RIGHT-OF-WAY WHICH ARE IN DIRECT CONFLICT WITH PROPOSED NEW CONSTRUCTION SHALL BE REMOVED BY THE CONTRACTOR, WITH THE ENGINEER'S APPROVAL. TREES AND SHRUBS WHICH ARE NOT IN DIRECT CONFLICT WITH PROPOSED NEW CONSTRUCTION SHALL BE SAVED AND PROTECTED FROM DAMAGE.
- RUBBLE FROM THE REMOVAL OF MISCELLANEOUS STRUCTURES SHALL BE DISPOSED OF ON SITES TO BE PROVIDED BY THE CONTRACTOR AND APPROVED AS NOTED BELOW.  
  
ALL DISPOSAL SITES MUST BE APPROVED BY THE KANSAS DEPARTMENT OF HEALTH AND ENVIRONMENT. MATERIAL EITHER STOCKPILED OR DISPOSED OF IN A FLOOD PLAIN WOULD REQUIRE A KANSAS STATE BOARD OF AGRICULTURE PERMIT. ANY MATERIAL DUMPED IN WATERS OF THE UNITED STATES OR WETLANDS IS SUBJECT TO U.S. CORPS OF ENGINEERS PERMITTING REGULATIONS. ANY MATERIAL BURIED OR STOCKPILED BEYOND APPROVED CONSTRUCTION LIMITS WOULD REQUIRE ADDITIONAL ARCHEOLOGICAL INVESTIGATIONS UNLESS BURIED IN A PREVIOUSLY APPROVED BORROW LOCATION.
- CONTRACTOR SHALL SATISFY HIMSELF OF SURFACE AND SUBSURFACE CONDITIONS PRIOR TO BIDDING.
- TEMPORARY SURFACING MATERIAL (ROCK, ASPHALT, ETC.) MAY HAVE BEEN PLACED WITHIN STREET RIGHTS-OF-WAY FOR HAUL ROADS AND TEMPORARY ACCESS. CONTRACTOR SHALL FIELD VERIFY EXISTING CONDITIONS TO DETERMINE EXTENT, IF ANY, OF SUCH SURFACING. CONTRACTOR SHALL REMOVE SAID TEMPORARY SURFACING IN THE SAME MANNER AS NOTED ABOVE FOR RUBBLE. THIS REMOVAL SHALL BE SUBSIDIARY TO "UNCLASSIFIED EXCAVATION".
- CONTRACTOR SHALL PROVIDE A MINIMUM SEVENTY-TWO (72) HOUR ADVANCE NOTICE (EXCLUDING WEEKENDS AND HOLIDAYS) PRIOR TO BEGINNING ANY EXCAVATION, TO KANSAS ONE-CALL SYSTEM, A UTILITY LOCATION SERVICE, AT (316) 867-2470 TO REQUEST THAT THE FOLLOWING UTILITY COMPANIES LOCATE ALL EXISTING LINES WITHIN THE PROJECT AREA: KANSAS GAS SERVICE, WESTAR ENERGY, SBC, COX COMMUNICATIONS, CITY OF WICHITA SEWER MAINTENANCE AND CITY OF WICHITA WATER DEPARTMENT.
- CONTACT WESTAR ENERGY (OR ITS SUCCESSOR) ELECTRIC TRANSMISSION LINE ENGINEERING DEPARTMENT (CURRENTLY 785-575-8167) BEFORE CONDUCTING ANY PROPOSED CONSTRUCTION ACTIVITIES THAT COULD PLACE PEOPLE, EQUIPMENT, OR FACILITIES WITHIN WESTAR ENERGY'S EASEMENT DESIGNATED AS BOOK 445 PAGE 475, 476 DATED JUNE 2, 1959.
- THE CONTRACTOR SHALL BE RESPONSIBLE FOR PRESERVING PROPERTY IRONS. THE CONTRACTOR WILL BE REQUIRED TO RE-ESTABLISH ANY PROPERTY IRONS WHICH ARE DAMAGED OR DESTROYED BY HIS CONSTRUCTION OPERATIONS OR COVERED BY 12" (INCHES) OR MORE OF FILL WITH THIS PROJECT. SUCH IRONS SHALL BE RE-ESTABLISHED BY A LICENSED LAND SURVEYOR IN ACCORDANCE WITH STATE LAWS.
- THE WATER DEPARTMENT SHALL FIELD LOCATE WATER VALVES ONE TIME DURING CONSTRUCTION WHEN REQUESTED BY THE CONTRACTOR. IT SHALL BE THE CONTRACTOR'S RESPONSIBILITY TO PRESERVE SUCH FIELD LOCATIONS DURING THE CONSTRUCTION PROCESS. WATER VALVES, WATER VALVE BOXES OR FIRE HYDRANTS DAMAGED DURING CONSTRUCTION SHALL BE REPAIRED BY THE CONTRACTOR AT HIS OWN EXPENSE.
- THE CONTRACTOR SHALL APPLY TEMPORARY SEED AND MULCH TO ALL UNPAVED AREAS DISTURBED BY HIS CONSTRUCTION OPERATIONS IN ACCORDANCE WITH THE STANDARD SPECIFICATIONS. SEED SHALL BE ANNUAL RYE APPLIED AT THE RATE OF 4 LBS. PER 1,000 SQUARE FEET. MULCH SHALL BE PRAIRIE HAY APPLIED AT THE RATE OF 15 BALES PER ACRE. THIS WORK SHALL BE PAID FOR AT THE CONTRACT PRICE BID FOR "TEMPORARY PROJECT SEEDING".
- EROSION CONTROL (BMP'S)  
THE CONTRACTOR SHALL INSTALL AND/OR MAINTAIN EROSION CONTROL METHODS AS SPECIFIED ON THE EROSION CONTROL PLANS CONTAINED HEREIN. THE FOLLOWING QUANTITIES ARE ESTIMATED, AND SHOULD BE CONSIDERED THE MINIMUM EFFORT REQUIRED. INSTALLATION OF THESE BMP'S DOES NOT RELIEVE THE CONTRACTOR OF THE RESPONSIBILITY OF ABATING SOIL EROSION.  
  
CURB INLET PROTECTION      2 EACH  
CONSTRUCTION ENTRANCE      1 EACH  
SILT FENCE BARRIER      3,048 L.F.  
DITCH CHECKS      141 L.F.
- THE CROSS SECTION SHEETS ARE FOR INFORMATION ONLY. THEY ARE NOT INTENDED TO BE USED FOR CALCULATING SITE GRADING SINCE THEY DO NOT PROVIDE COVERAGE FOR THE ENTIRE PROJECT SITE. THE CONTRACT BID QUANTITY FOR "UNCLASSIFIED EXCAVATION" IS AS SHOWN ON THE TITLE SHEET.



**BENCHMARK LIST**

BM #2 - SET "I" POST ±10' EAST & ±10' NORTH OF SOUTHEAST CORNER OF 5 ACRE EXCEPTION OR ±65' EAST & ±40' NORTH OF SOUTHEAST CORNER OF GOVERNMENT LOT 4.	ELEV. = 176.39
BM #6 - SET R.R. SPIKE IN SOUTH FACE OF SOUTH POLE, 2 POLE ELECTRIC LINE STRUCTURE, 2ND STRUCTURE WEST OF CENTER SECTION 31-26S-1W.	ELEV. = 168.755
BM #7 - SET "I" POST ON PI OF DITCH BERM RUNNING N-E, ±20' EAST OF CENTER SECTION 31-26S-1W.	ELEV. = 168.93
BM #8 - SET "I" POST ±15' SOUTH OF NORTHWEST CORNER OF SOUTHWEST 1/4 OF SOUTHEAST 1/4 SECTION 31-26S-1W.	ELEV. = 169.43
BM #12 - "I" POST 24' SOUTH OF CENTERLINE OF 29TH STREET NORTH, 33' EAST OF CENTERLINE OF COVINGTON STREET TO THE NORTH, NORTH OF A POWER POLE IN CULTIVATED FIELD.	ELEV. = 172.72

Scaled 12-14-2005 6:39:02 AM by BJS  
 Plot Scale 1:150 12-14-2005 5:18:00 PM by BJS  
 J:\SEN\001\2004\04485\2005-12-14 to CITY\SWD\DWG\02-KEMAP



No.	Revision	By	Date
	FONTANA ADDITION-PHASE 1 STORM WATER DRAIN NO. 236		

**KEY MAP AND GENERAL NOTES**  
 JAMES L. ARMOUR, P.E. - CITY ENGINEER  
 CITY OF WICHITA PROJECT NO. 468-83883  
**Professional Engineering Consultants, P.A.**  
 303 S. TOPKA • WICHITA, KANSAS 67202  
 316-262-2691 • FAX 316-262-3003

Designed by	BDB, BLB	Job No.	35-04485-001	Sheet 2 of 79
Drawn by	BJS	Date	SEPTEMBER 2004	