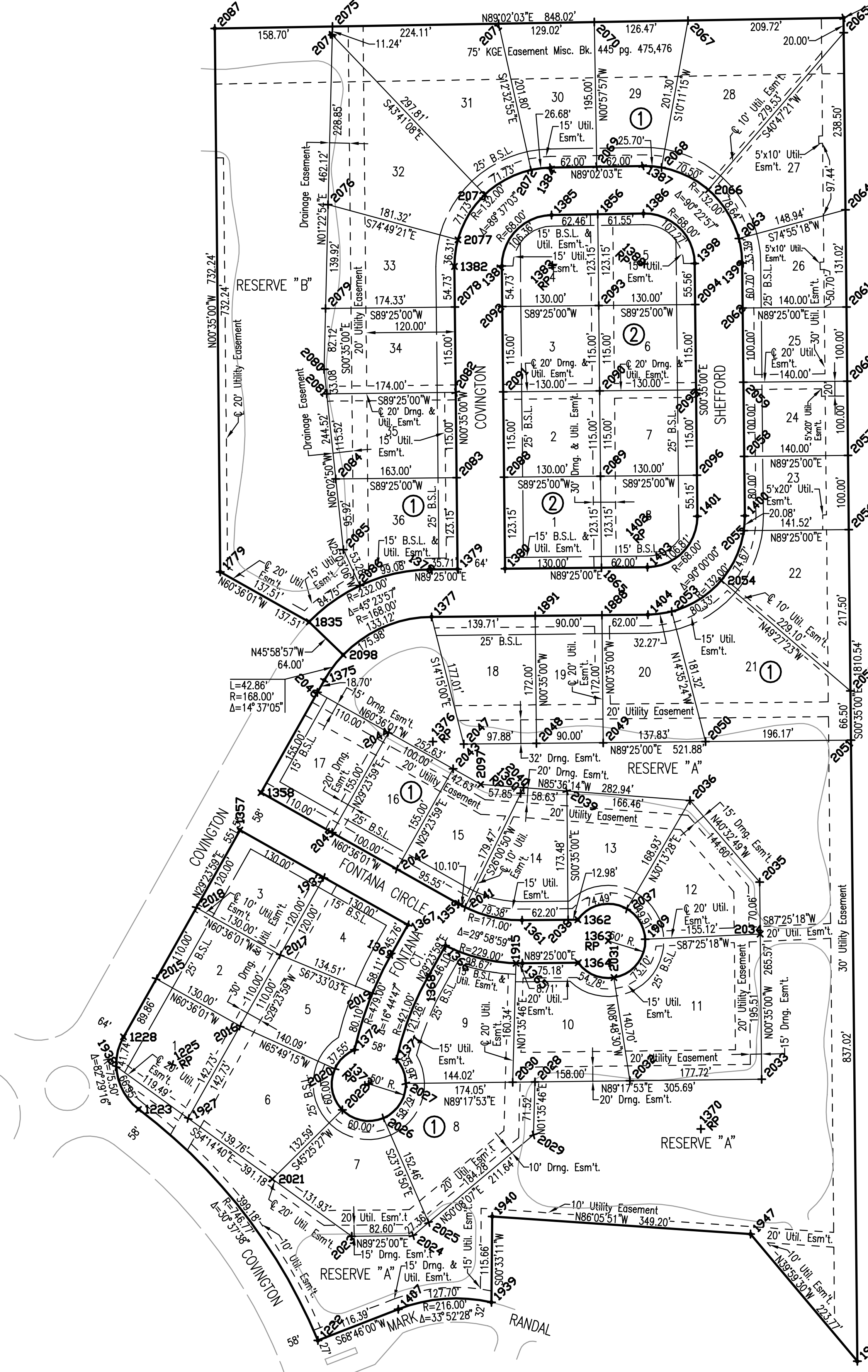


FONTANA 2ND

AN ADDITION TO WICHITA, SEDGWICK COUNTY, KANSAS

Center Sec. 31, T26S, R1W
N.E. Cor. Lot 61, Blk. 4
Fontana Addition
Found 3/4" Pipe



SCALE: 1" = 100'

• = 1/2" REBAR W/PEC CAP UNLESS OTHERWISE NOTED

COORDINATE LIST			COORDINATE LIST		
POINT	NORTH	EAST	POINT	NORTH	EAST
203	27859.518300	17333.880900	2027	26423.471020	16743.733267
1220	25791.734670	15934.888700	2028	26425.602917	16917.267112
1222	26077.041027	16625.007691	2029	26354.110754	16915.774971
1223	26388.822293	16383.386537	2030	26425.235152	16887.745220
1225	26449.189174	16428.730662	2031	26566.207816	17024.183597
1228	26486.252010	16362.953795	2032	26427.170431	17045.728509
1357	26764.915373	16519.970312	2033	26429.847305	17223.434009
1358	26815.445946	16548.442425	2034	26624.845887	17221.443772
1359	26665.449778	16814.646499	2035	26694.906780	17220.730530
1360	26814.427846	16898.590141	2036	26804.782565	17126.731596
1361	26643.436707	16900.330884	2037	26658.821114	17041.696539
1362	26644.201984	16975.503164	2038	26644.069878	16962.526535
1363	26615.618118	17016.527091	2039	26817.541959	16960.760535
1364	26586.204989	16976.093591	2040	26822.035998	16902.303178
1365	26585.439712	16900.921312	2041	26660.752317	16823.591263
1366	26609.104514	16797.183391	2042	26712.357263	16731.397948
1367	26637.281765	16746.466874	2043	26847.359863	16807.487214
1368	26588.944602	16774.554763	2044	26896.485712	16720.365536
1369	26597.416715	16724.024190	2045	26761.447112	16644.276270
1370	26362.276338	17141.337026	2046	26950.484546	16624.531691
1371	26456.244282	16730.957902	2047	26880.729187	16821.936766
1372	26468.954230	16674.367191	2048	26881.725602	16919.813386
1373	26422.858571	16693.737018	2049	26882.641782	17009.808723
1375	26966.774172	16633.710294	2050	26894.044907	17147.636005
1376	26884.303226	16780.074712	2051	26896.041828	17343.791193
1377	27052.294521	16778.364508	2052	26952.533833	17343.114284
1378	27115.291205	16771.713002	2053	27059.513941	17019.982023
1379	27116.654676	16813.416346	2054	27101.453824	17169.019303
1380	27117.306182	16877.413030	2055	27168.586431	17199.383742
1381	27525.160742	16873.260943	2056	27170.027112	17340.900135
1382	27524.509236	16809.264259	2057	27270.021931	17339.882156
1383	27525.852968	16941.257420	2058	27268.596763	17199.889633
1384	27657.834215	16939.032472	2059	27368.591582	17198.871655
1385	27593.843307	16940.111235	2060	27370.016749	17338.864178
1386	27595.933456	17064.096382	2061	27470.011567	17337.846200
1387	27659.934584	17063.017619	2062	27468.586400	17197.856577
1388	27527.943117	17065.242967	2063	27562.291381	17192.897985
1389	27528.635342	17133.239043	2064	27601.026994	17336.512422
1399	27529.286848	17197.235727	2065	27839.519336	17334.084496
1400	27188.600908	17200.704016	2066	27627.882875	17151.475070
1401	27187.949402	17136.707332	2067	27855.983373	17124.193222
1402	27187.257177	17068.710856	2068	27657.861980	17088.589708
1403	27119.260700	17069.403081	2069	27658.879289	17001.025046
1404	27055.264016	17070.054587	2070	27853.851586	16997.738191
1407	26119.194018	16733.497523	2071	27851.676829	16868.734177
1409	25917.857509	16811.725461	2072	27854.699775	16912.578156
1779	27113.018598	16493.485558	2073	27621.307695	16850.085082
1835	27045.515241	16613.237408	2074	27836.666110	16844.388301
1856	27594.896034	17002.557553	2075	27847.899360	16844.659233
1865	27118.629554	17007.406294	2076	27607.882526	16638.870339
1888	27054.632870	17008.057800	2077	27560.412034	16813.861694
1891	27053.716689	16918.062463	2078	27469.781957	16809.821400
1909	26617.867429	17066.476471	2079	27468.007278	16635.496731
1915	26585.516700	16892.211493	2080	27385.908922	16633.516626
1927	26376.369385	16450.255587	2081	27353.016634	16637.001091
1933	26701.098569	16633.228493	2082	27354.787916	16810.992075
1938	26446.188776	16353.290304	2083	27238.793875	16812.162750
1939	26128.621641	16858.995575	2084	27238.134570	16849.171196
1940	26244.274222	16860.112242	2085	27142.747582	16659.276078
1947	26220.507720	17208.499879	2086	27094.478069	16681.837574
1951	26049.068903	17352.311838	2087	27845.224378	16485.982475
2015	26564.535514	16407.063660	2088	27240.445381	16876.159434
2016	26500.718710	16520.321841	2089	27241.768753	17006.152698
2017	26596.552556	16574.320675	2090	27356.762794	17004.982023
2018	26660.369380	16461.062494	2091	27355.439422	16874.988759
2019	26545.188681	16698.636140	2092	27470.433463	16873.818084
2020	26443.338149	16648.123567	2093	27471.756835	17003.811348
2021	26294.704908	16563.671344	2094	27473.080207	17133.804612
2022	26387.765986	16658.120863	2095	27358.086166	17134.975287
2023	26217.613787	16670.735618	2096	27243.092125	17136.145962
2024	26218.454610	16753.328732	2097	26826.470143	16844.624909
2025	26235.994253	16774.332196	2098	27001.042961	16659.261492
2026	26376.946852	16713.538889			

× 1000 = COORDINATE POINT NO.

Scaled 12-01-2005 11:50:20 AM by BJS
 Plot Scale 1:100 12-14-2005 5:16:25 PM by BEJ
 J:\SENTOUT\2004\04485\2005-12-14 to CITY\SWD 236\DWG\05-Final-Fontana 2ND

No.	Revision	By	Date
FONTANA ADDITION-PHASE 1 STORM WATER DRAIN NO. 236 PLAT JAMES L. ARMOUR, P.E. - CITY ENGINEER CITY OF WICHITA PROJECT NO. 468-83883 Professional Engineering Consultants, P.A. 303 S. TOPEKA • WICHITA, KANSAS 67202 316-262-2691 • FAX 316-262-3003			
Designed by	BDB, BLB	Job No.	35-04485-001
Drawn by	BJS	Date	SEPTEMBER 2004

Sheet 5 of 79