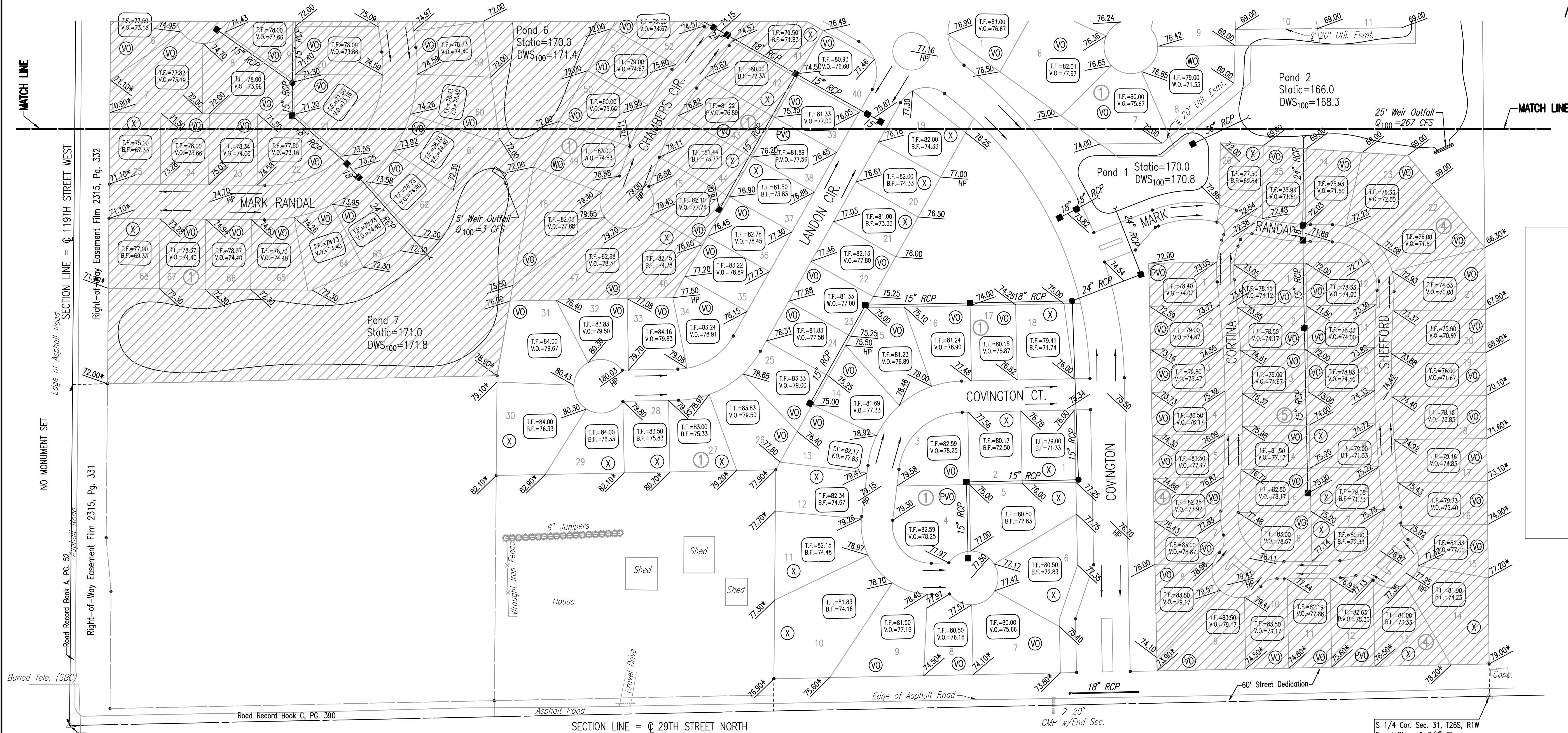


FONTANA

AN ADDITION TO WICHITA,
SEDGWICK COUNTY, KANSAS
FOUR CORNER PLAN



SCALE: 1"=100'



FONTANA

MINIMUM OPENINGS	ELEVATION (N.G.V.D.)
BLOCK 1 LOTS 31, 47-68	174.4
BLOCK 3 LOTS 15-41, 55	171.7
BLOCK 4 LOTS 22-25	171.3

FONTANA 2nd

MINIMUM OPENINGS	ELEVATION (N.G.V.D.)
BLOCK 1 LOTS 7-8	173.8
LOTS 10-11	171.3
LOTS 12-21	171.5
LOTS 32-36	171.7
BLOCK 2 LOTS 1-8	171.7

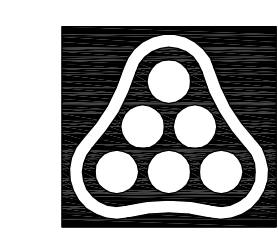
LEGEND

- SPOT ELEVATION
- HIGH POINT ELEVATION
- MATCH EXISTING ELEVATION
- STORM SEWER AND INLET
- STORM SEWER AND MANHOLE
- VIEW-OUT BASEMENT
- WALK-OUT BASEMENT
- STANDARD BASEMENT
- POSSIBLE WALK-OUT BASEMENT
- POSSIBLE VIEW-OUT

ADD 100 TO ELEVATIONS FOR CITY DATUM.

REVISED 10-03-05

No.	Revision	By	Date
FONTANA ADDITION-PHASE 1 STORM WATER DRAIN NO. 236 4-CORNER GRADING PLAN JAMES L. ARMOUR, P.E. - CITY ENGINEER CITY OF WICHITA PROJECT NO. 468-83883 Professional Engineering Consultants, P.A. 303 S. TOPEKA • WICHITA, KANSAS 67202 316-262-2691 • FAX 316-262-3003			
Designed by	BDB, BLB	Job No.	35-04485-001
Drawn by	BJS	Date	SEPTEMBER 2004
			Sheet 7 of 79



S.W. Cor. Sec. 31, Twp. 26S, R1W
 Found Pipe w/ Sedgwick County
 Cap in Concrete

S 1/4 Cor. Sec. 31, T26S, R1W
 Found Stone & 3/4" IP on
 West side

Sowed 12-14-2005 6:44:54 AM by BJS
 Plot Scale 1:100 12-14-2005 5:15:15 PM by BJS
 J:\SENTOUT\2004\04485\2005-12-14 to CITY\SWD 236\DWG\07-FOUR-CORNER GRAD PLAN