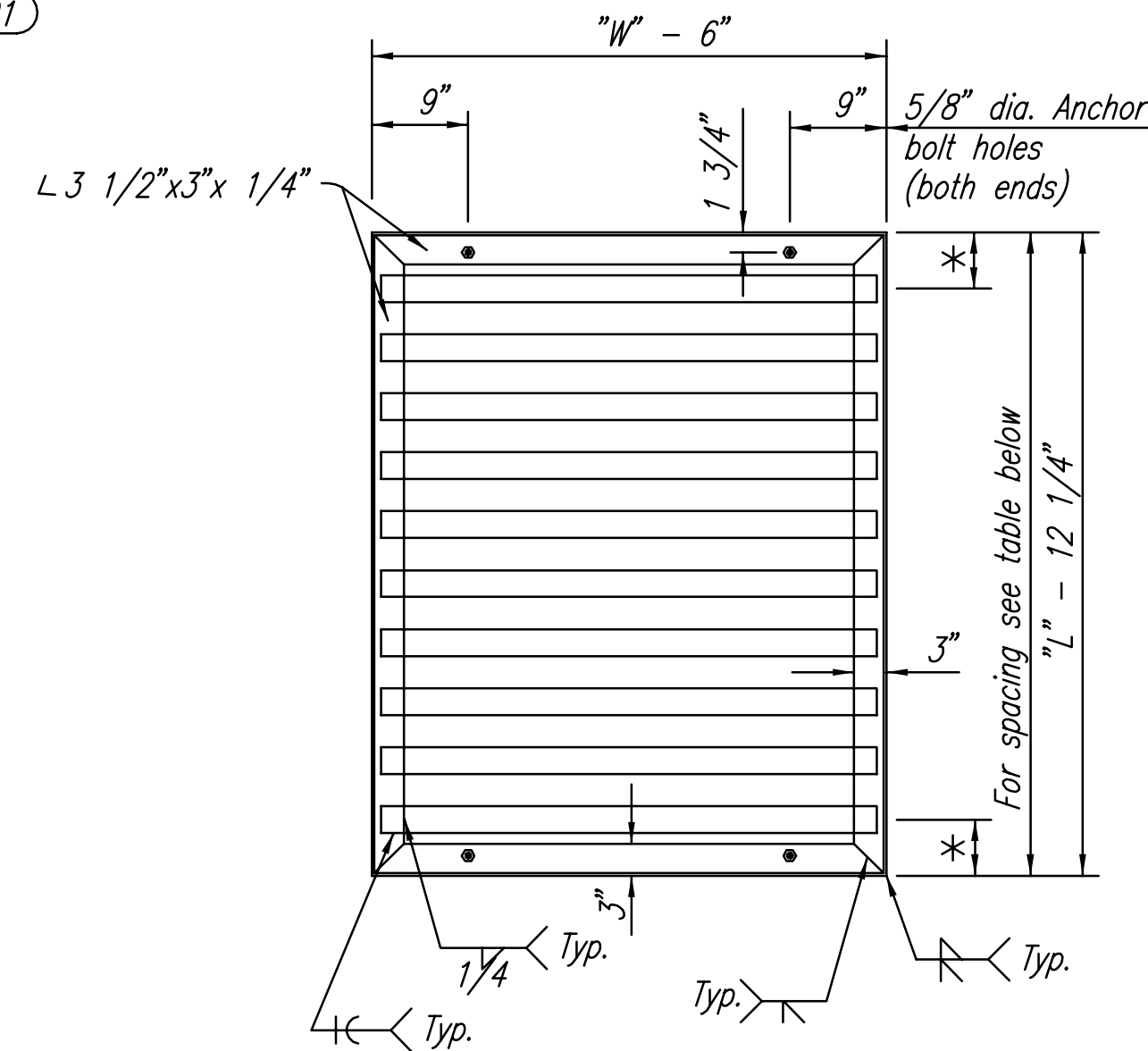


PLAN/SECTION



GRATE UNIT DETAILS

PIPE DIMENSIONS AND SPACING				
Location	L x W	No. of Pipes	Dia. x Length x Spacing	*
(301)	5'-0" x 5'-0"	7	2 1/2" φ x 4'-4 1/4" pipes @ 6" ctrs.	5 7/8"

GENERAL NOTES

Concrete shall be as per Standard Specifications for Concrete Paving Mix, except that it shall have a minimum 28 day compressive strength of 4,000 p.s.i. All pipes shall be flush cut prior to being cast into the Inlet.

All dimensions relative to Reinforcing Steel are to centerline of bar unless otherwise noted. All Reinforcing Steel shall conform to A.S.T.M. Designation A615 Grade 60 and shall be Epoxy Coated.

All exposed edges shall be finished with an edging tool.

All external pipe to inlet joints shall be coated with an asphaltic tar to waterproof the joint interface.

Where possible bend bars around pipes.

Floor of inlet shall be shaped to create flow channels using unreinforced concrete (paving mix).

All bars are #4 @ 6" spacing and shall have a minimum clearance of 1 1/2" unless otherwise noted on the plans.

The top of the inlet shall be set level.

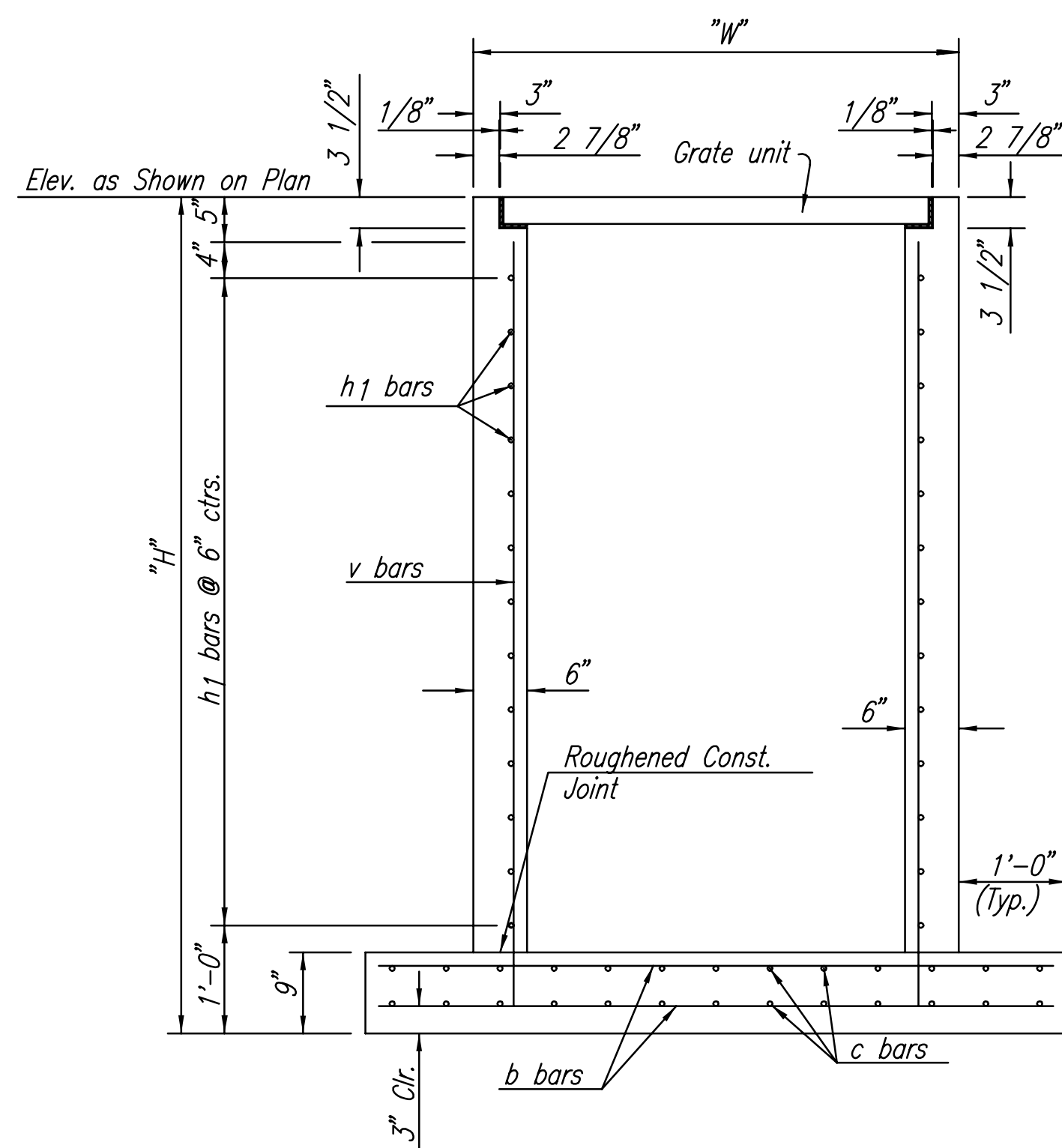
The grate shall be fabricated from standard or commercial grade structural steel and black steel pipe. The unit shall be hot dipped, galvanized after fabrication, in accordance with ASTM A123 except the weight of coating shall average not less than 2.0 ounces per square foot of actual surface and no individual test shall show less than 1.8 ounces of coating per square foot of actual surface area.

Note: Inlet modified from KDOT Std. No. 648

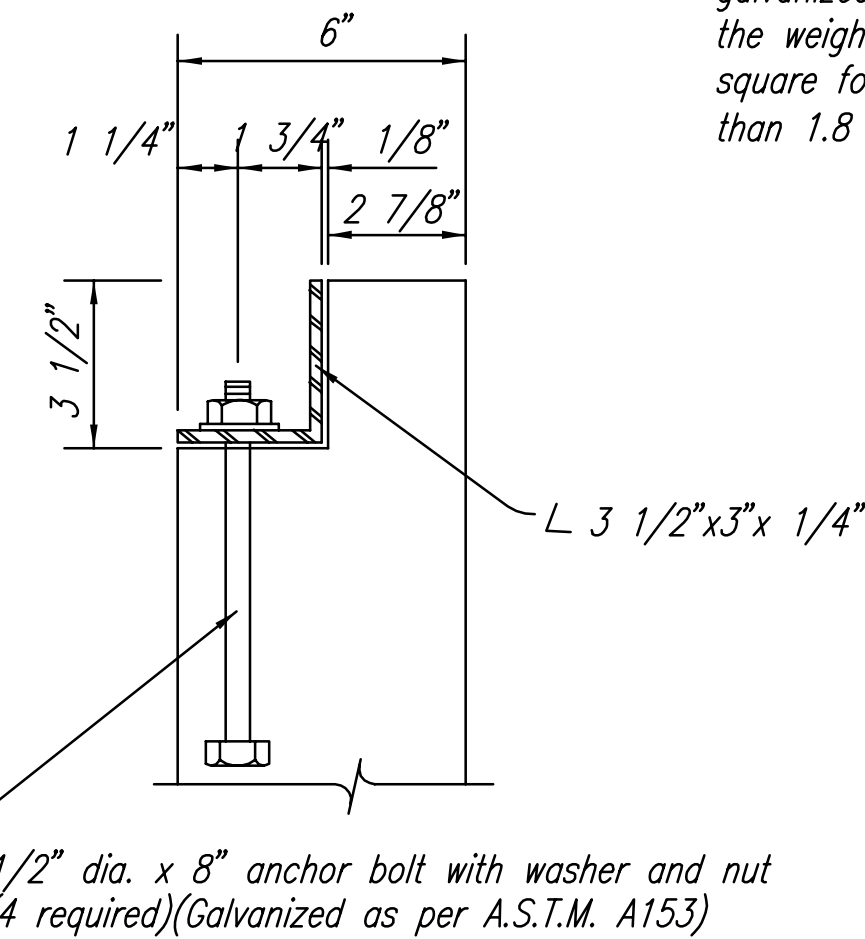
BILL OF MATERIALS (PER INLET)

"L"	"W"	"H"		
5'-0"	5'-0"	10'-9"		
Bar	No.	Size	Length	
v	32	#4	10'-1"	
c	28	#4	6'-9"	
b	28	#4	6'-9"	
h1	36	#4	4'-9"	
h2	36	#4	4'-9"	
Class "I" Conc.			4.69	Cu.Yd.
Reinf. steel			696.5	Lbs.
Struct. steel			262.49	Lbs.

Quantities are for information only.



SECTION A-A



SECTION B-B

Note: Anchor bolts are subsidiary to the bid item "Inlet Type C".

TYPE "C" INLET

See Plan Sheet for Inlet Orientation.

Saved 12-14-2005 7:36:28 AM by BJS
 P:\S\2005\12-14-2005\31005-PA.dwg by BJS
 P:\S\2005\12-14-2005\31005-PA.dwg by BJS
 P:\S\2005\12-14-2005\31005-PA.dwg by BJS

No.	Revision	By	Date
FONTANA ADDITION-PHASE 1 STORM WATER DRAIN NO. 236 TYPE "C" INLET DETAILS JAMES L. ARMOUR, P.E.- CITY ENGINEER CITY OF WICHITA PROJECT NO. 468-83883 Professional Engineering Consultants, P.A. 303 S. TOPEKA • WICHITA, KANSAS 67202 316-262-2691 • FAX 316-262-3003			
Designed by	BDB, BLB	Job No.	35-04485-001
Drawn by	BJS	Date	SEPTEMBER 2004
			Sheet 19 of 79