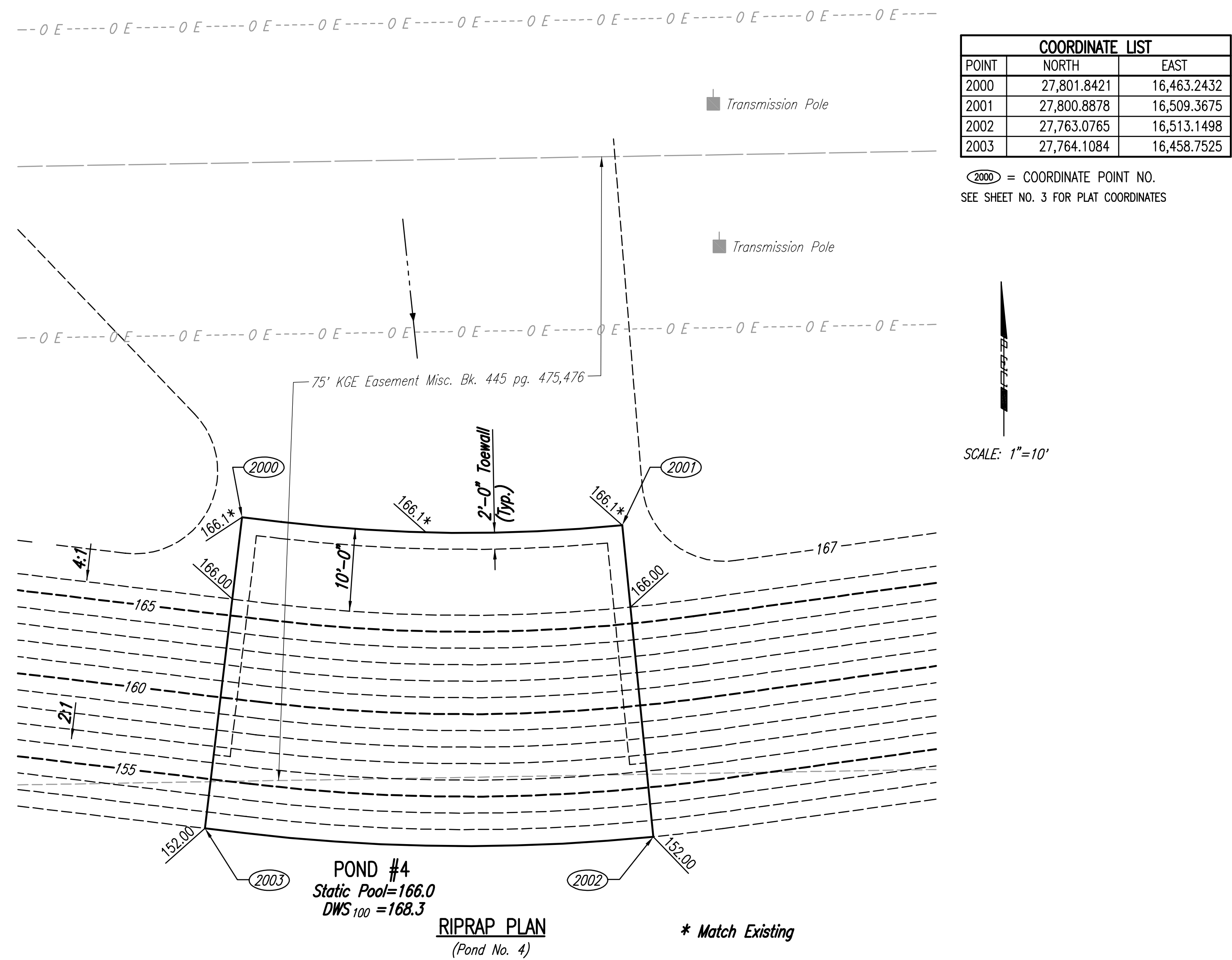


RIPRAP PLAN
(Pond No. 2)

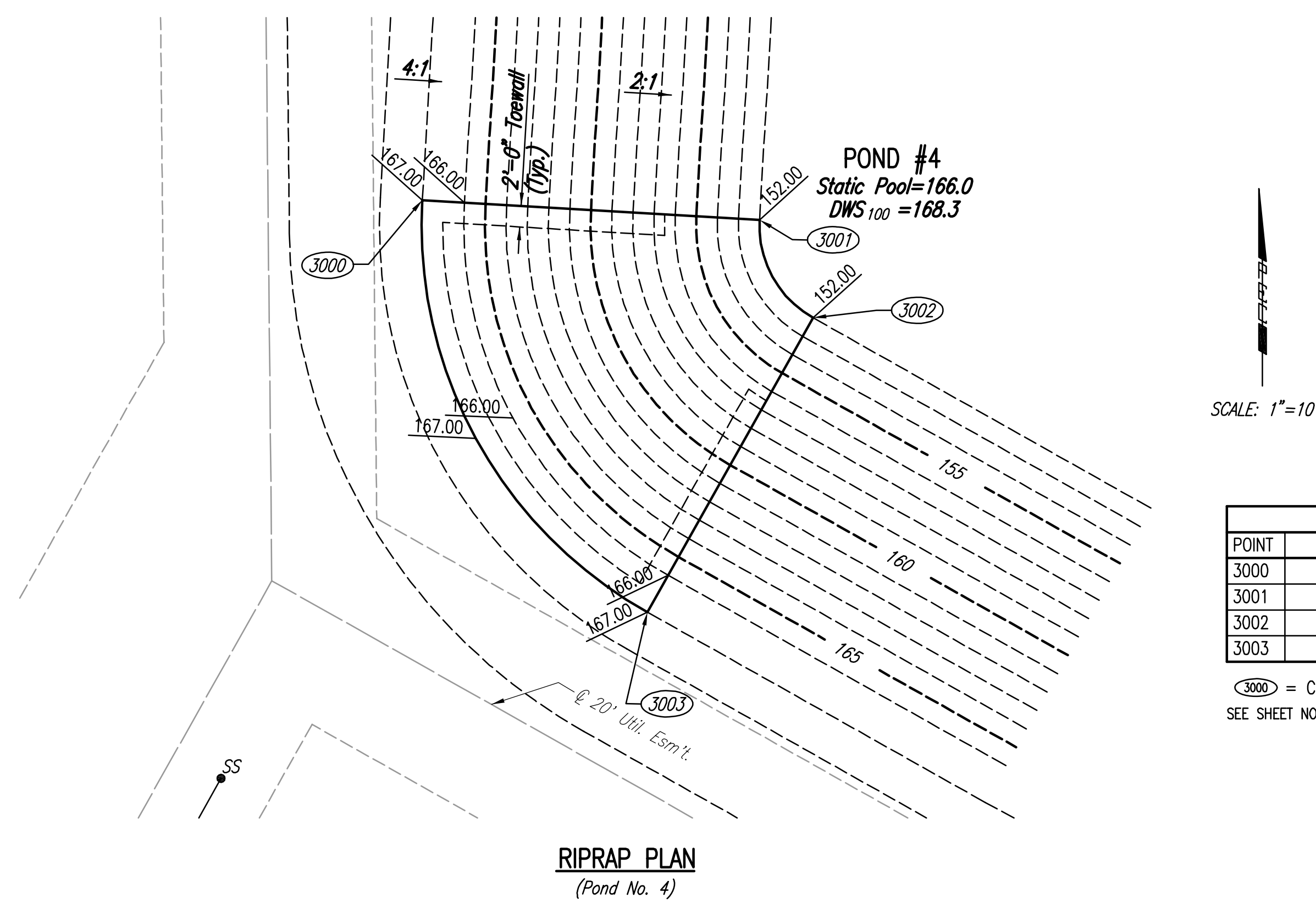
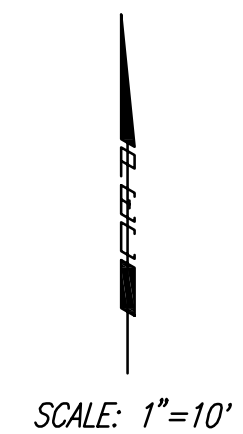


RIPRAP PLAN
(Pond No. 4)

* Match Existing

COORDINATE LIST		
POINT	NORTH	EAST
2000	27,801.8421	16,463.2432
2001	27,800.8878	16,509.3675
2002	27,763.0765	16,513.1498
2003	27,764.1084	16,458.7525

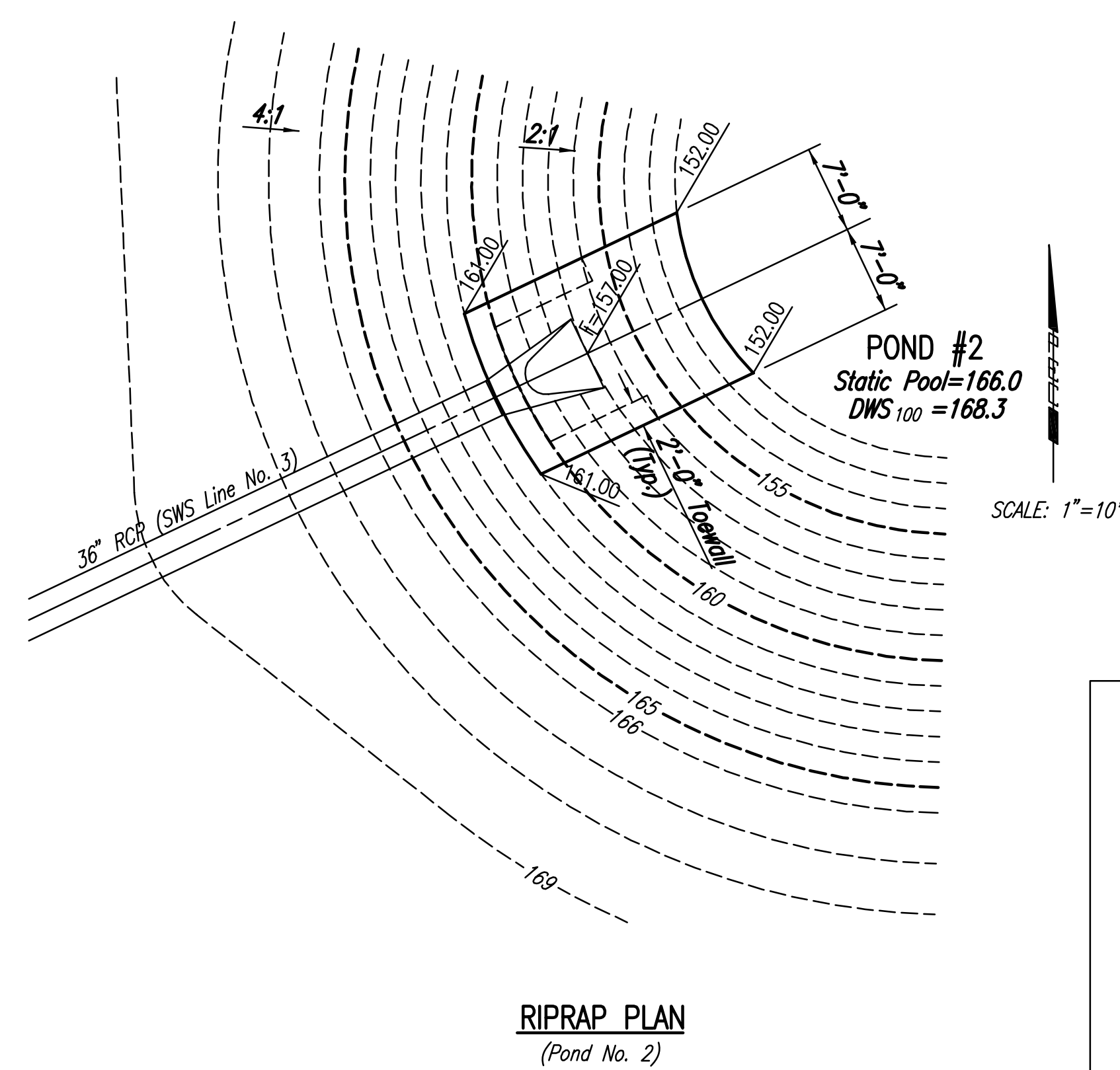
2000 = COORDINATE POINT NO.
SEE SHEET NO. 3 FOR PLAT COORDINATES



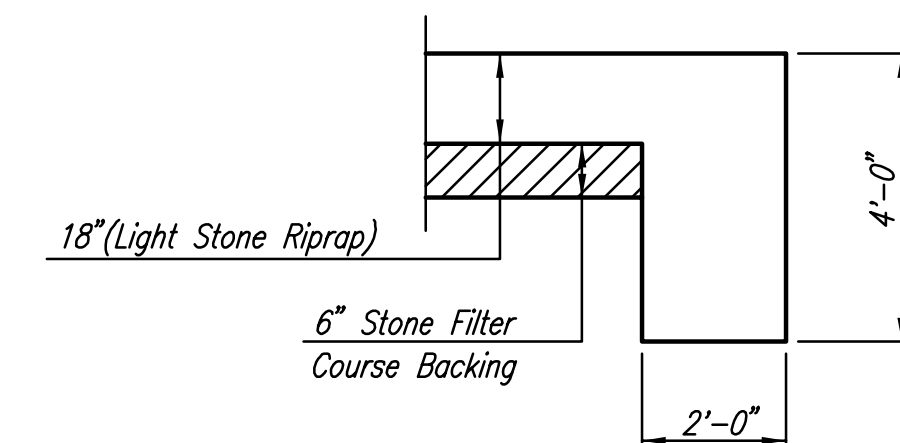
RIPRAP PLAN
(Pond No. 4)

COORDINATE LIST		
POINT	NORTH	EAST
3000	27,149.0858	16,507.6998
3001	27,147.2215	16,539.6454
3002	27,137.9268	16,544.7195
3003	27,110.0479	16,529.0107

3000 = COORDINATE POINT NO.
SEE SHEET NO. 3 FOR PLAT COORDINATES



RIPRAP PLAN
(Pond No. 2)

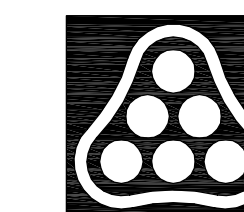


TYPICAL SECTION THRU TOEWALL
NO SCALE

NOTES

- ALL RIPRAP FOR THIS PROJECT SHALL BE NATURAL STONE. NEITHER BROKEN CONCRETE, FABRIC ENVELOPE, NOR PREMIXED DRY PACKAGED CONCRETE BAG ALTERNATES WILL BE ALLOWED.
- TOEWALLS SHALL BE INSTALLED ALONG ALL EDGES OF STONE RIPRAP OR AS SHOWN ON PLANS.
- GROUTING OF THE SURFACE OF THE RIPRAP SHALL NOT BE PERFORMED. GROUTING OF THE TOEWALLS SHALL BE PERFORMED PER CITY SPECIFICATIONS.
- DEPTH OF TOEWALL SHALL NOT BE DEEPER THAN THE POND FLOOR (POND #2 ELEV=152.0, POND #4 ELEV=152.0).

Sheet 12-14-2005 7:58:46 AM by BJS
 Plot Scale: 1"=10'-14-2005 5:08:43 PM by BJS
 J:\SERVIC\2004\04485\2005-12-14 to CHY\DWG\2-236(DWG)\22-MISC DRAWN DTL



No.	Revision	By	Date
	FONTANA ADDITION-PHASE 1 STORM WATER DRAIN NO. 236		
MISCELLANEOUS DRAINAGE DETAILS			
JAMES L. ARMOUR, P.E. - CITY ENGINEER CITY OF WICHITA PROJECT NO. 468-83883 Professional Engineering Consultants, P.A. 303 S. TOPEKA • WICHITA, KANSAS 67202 316-262-2691 • FAX 316-262-3003			
Designed by	BDB, BLB	Job No.	35-04485-001
Drawn by	BJS	Date	SEPTEMBER 2004