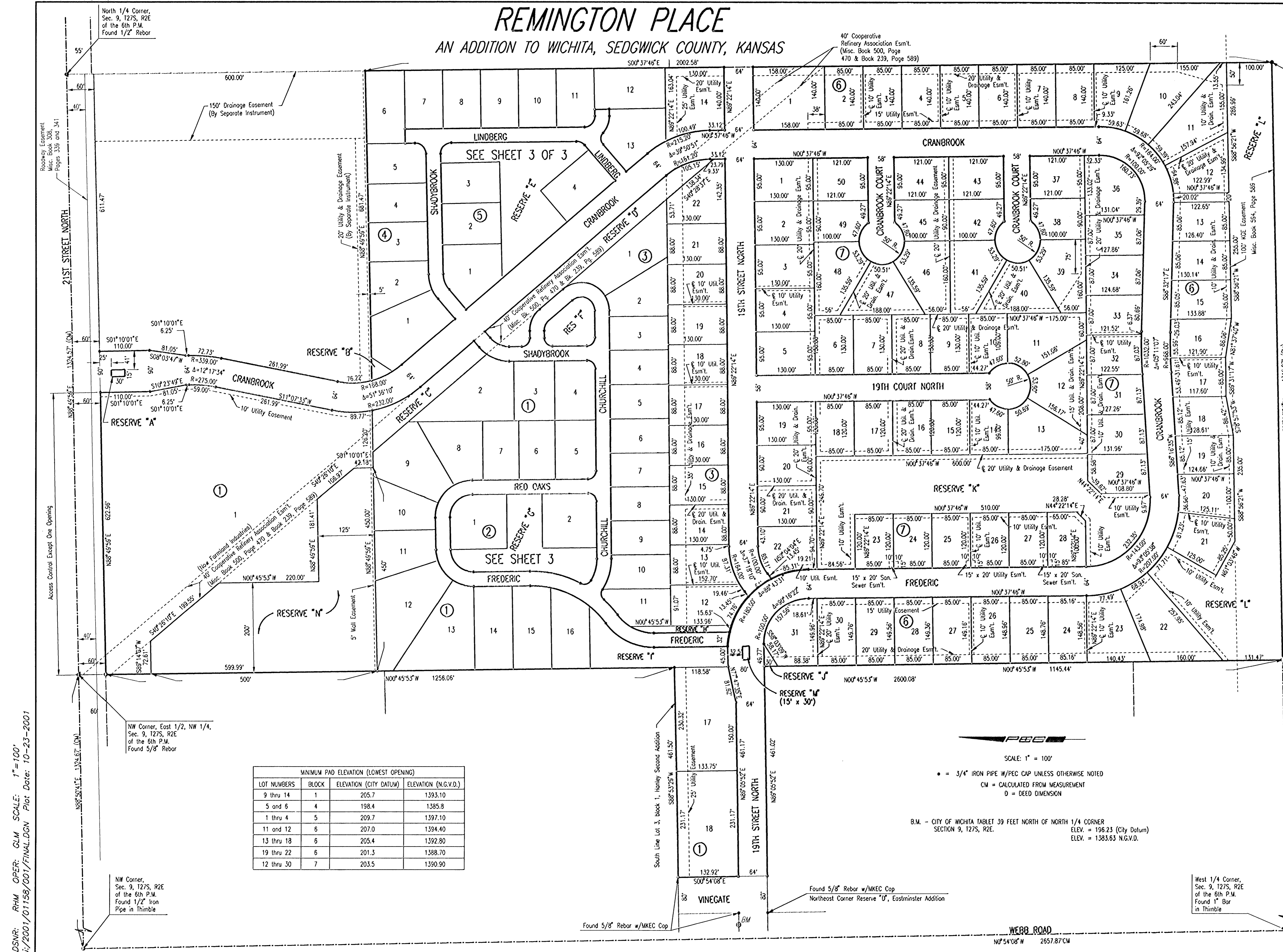


REMINGTON PLACE

AN ADDITION TO WICHITA, SEDGWICK COUNTY, KANSAS

| | | |
|------------------------------|-----------|--------------|
| PROJECT NO. | SHEET NO. | TOTAL SHEETS |
| 468-76-245-83252-000-000-001 | 2 | 21 |



Center Sec. 9,
127S, R2E
of the 6th P.M.
Found 1/2" Iron Pipe

SW Corner, East 1/2, NW 1/4,
Sec. 9, 127S, R2E
of the 6th P.M.
Set 3/4" Iron Pipe

| MINIMUM PAD ELEVATION (LOWEST OPENING) | | | |
|--|-------|------------------------|----------------------|
| LOT NUMBERS | BLOCK | ELEVATION (CITY DATUM) | ELEVATION (N.G.V.D.) |
| 9 thru 14 | 1 | 205.7 | 1393.10 |
| 5 and 6 | 4 | 198.4 | 1385.8 |
| 1 thru 4 | 5 | 209.7 | 1397.10 |
| 11 and 12 | 6 | 207.0 | 1394.40 |
| 13 thru 18 | 6 | 205.4 | 1392.80 |
| 19 thru 22 | 6 | 201.3 | 1388.70 |
| 12 thru 30 | 7 | 203.5 | 1390.90 |

SCALE: 1" = 100'

• = 3/4" IRON PIPE W/PEC CAP UNLESS OTHERWISE NOTED
CM = CALCULATED FROM MEASUREMENT
D = DEED DIMENSION

B.M. - CITY OF WICHITA TABLET 39 FEET NORTH OF NORTH 1/4 CORNER
SECTION 9, 127S, R2E. ELEV. = 196.23 (City Datum)
ELEV. = 1383.63 N.G.V.D.

| | | | |
|---|-----------|------------|-----------|
| No. | Revisions | By | Date |
| | | | |
| REMINGTON PLACE-PHASE I CITY OF WICHITA, KANSAS PLAT | | | |
| Professional Engineering Consultants, P.A. 303 S. TOPEKA • WICHITA, KANSAS 67202 316-262-2291 • FAX 316-262-3003 | | | |
| Designed by | BER | Checked by | |
| Drawn by | BJS | Date | JUNE 2001 |
| | | Job No. | 01158-1 |

DSNR: RHM OPER: GLM SCALE: 1"=100'
 I:/2001/01158/001/FINAL.DGN Plot Date: 10-23-2001