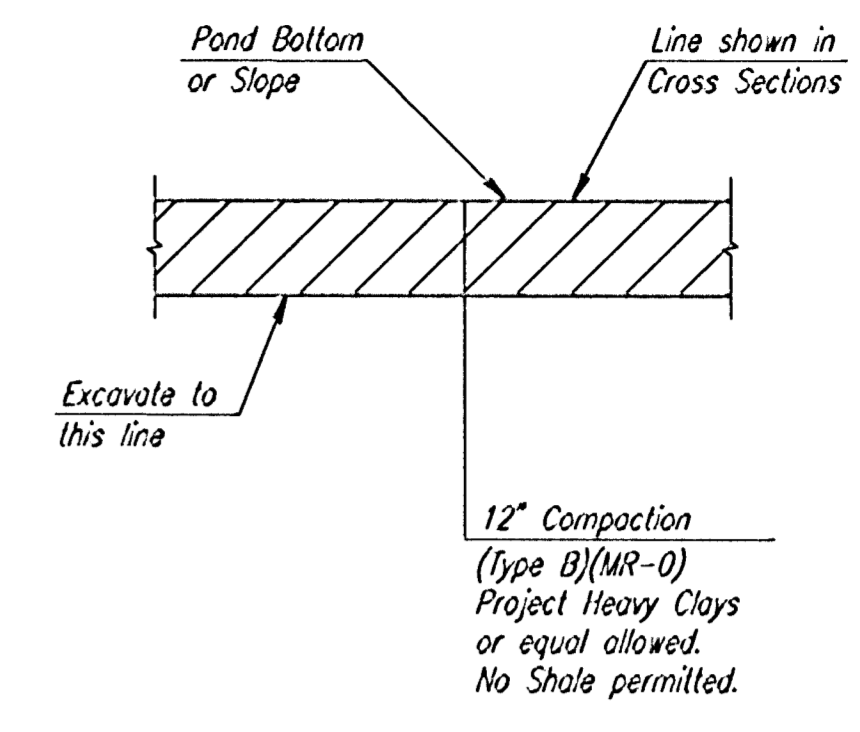
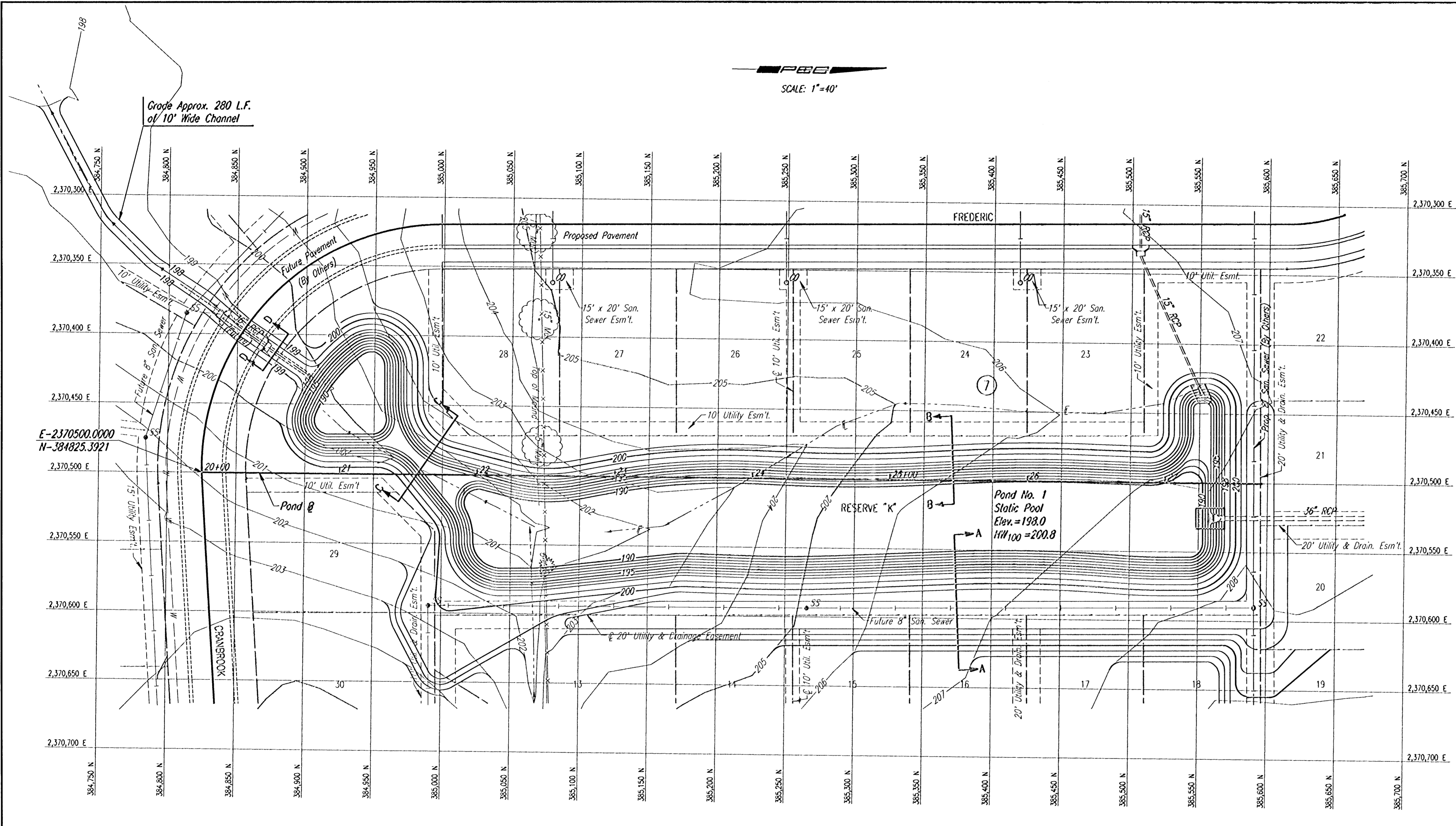


PROJECT NO.	SHEET NO.	TOTAL SHEETS
468-76-245-83252-000-001	4	21

SCALE: 1"=40'



POND SEALING

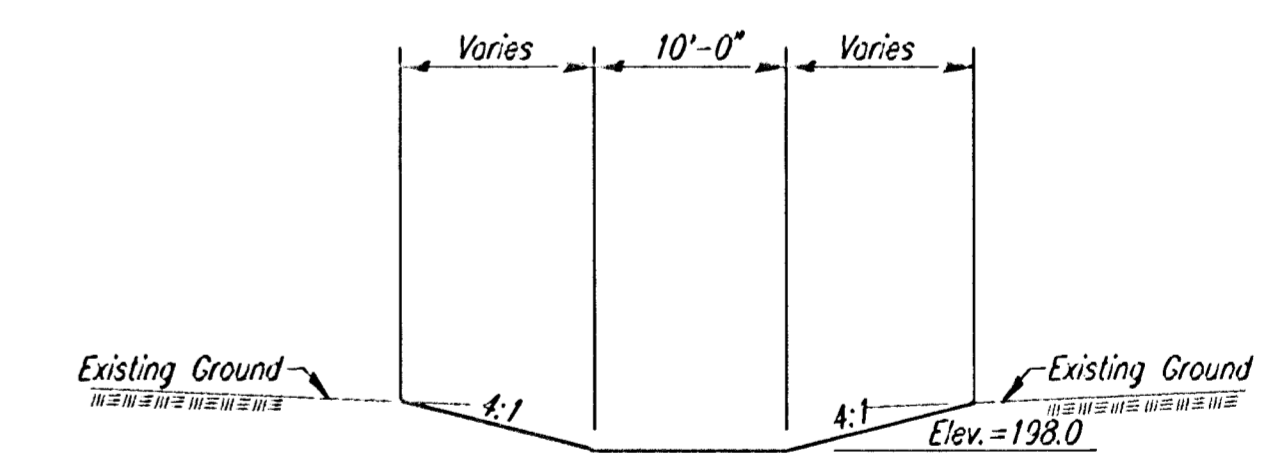
POND SEALING NOTES:

THE POND AREAS BELOW STATIC POOL ELEVATION SHALL BE OVEREXCAVATED TO A DEPTH OF ONE FOOT BELOW THE FINISHED SURFACE. THE OVEREXCAVATED MATERIAL SHALL BE STOCKPILED FOR RE-USE, UTILIZED IN PROJECT EMBANKMENTS, OR WASTED ON SITE. OVEREXCAVATED AREAS SHALL RECEIVE FOUNDATION TREATMENT AS SHOWN ON SHEET NO. BACKFILL OVEREXCAVATED AREA WITH PROJECT AREA CLAY MATERIAL AND COMPACT TO TYPE B (MR-D) IN MAXIMUM 6-INCH LIFTS. NO SHALE PERMITTED IN THIS ZONE.

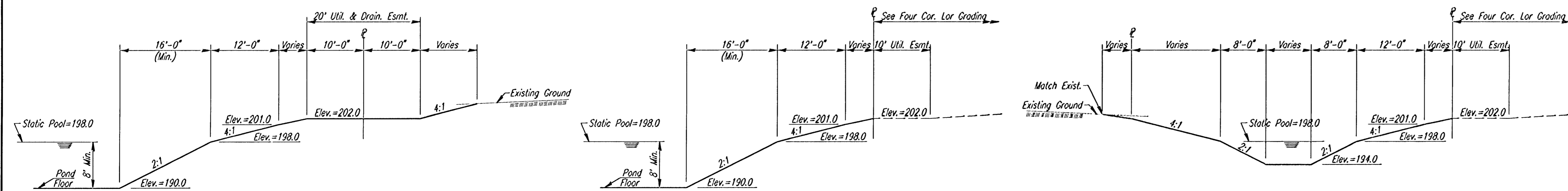
POND SEALING, AS DESCRIBED HEREIN, SHALL BE MEASURED AND PAID FOR BY THE LUMP SUM. THE LUMP SUM BID FOR "POND SEALING" SHALL BE CONSIDERED FULL COMPENSATION FOR ALL OVEREXCAVATION, STOCKPILING, DOUBLE HANDLING OF EARTHWORK (IF NECESSARY), COMPACTING, AND FOR ALL TOOLS, LABOR, EQUIPMENT AND INCIDENTALS NECESSARY TO COMPLETE THE WORK.

THE BID ITEM "POND SEALING" SHALL BE SUBJECT TO 100% UNDERRUN IF, IN THE OPINION OF THE ENGINEER, EXISTING SOILS BELOW STATIC POOL ELEVATION ARE CAPABLE OF SATISFACTORILY RETAINING WATER IN THE POND.

NOTE: GEOMETRIC LAYOUT FOR DETENTION BASIN MAY BE SCALED FROM THIS DRAWING, EXCEPT WHERE SPECIFIC DIMENSIONS AND/OR SLOPES ARE SHOWN.



SECTION D-D
Overflow Channel



SECTION A-A

SECTION B-B

SECTION C-C

Revisions		By	Date
No.			
REMINGTON PLACE-PHASE I CITY OF WICHITA, KANSAS POND NO. 1 STORM WATER DRAIN NO. 165			
Professional Engineering Consultants, P.A. 303 S. TOPEKA • WICHITA, KANSAS 67202 316-262-2691 • FAX 316-262-3003			
Designed by	BER	Checked by	
Drawn by	BJS	Date	JUNE 2001
		Job No.	0115B-1

DSNR: BER OPER: BJS SCALE: 1"=40' Plot Date: 10-23-2001
 i:/2001/0115B/001/POND1.dgn