

DSWR: BER OPER: BUS SCALE: 1"=100'
 1/2001/01159/001/4CORNER.DGN Plot Date: 10-23-2001

N. 1/4 Corner
 Sec. 9, T27S, R2E
 of the 6th P.M.
 Found 1/2" Rebar
 OWNER: JAN D & GERARDA DE BAKKER
 UNPLATTED
 ZONED: SF-20

SCALE: 1" = 100'
 = 3/4" IRON PIPE W/PEC CAP UNLESS OTHERWISE NOTED
 CM = CALCULATED FROM MEASUREMENT
 D = DEED DIMENSION

FOUR-CORNER PLAN/MASTER DRAINAGE PLAN
REMINGTON PLACE
 AN ADDITION TO WICHITA, SEDGWICK COUNTY, KANSAS

OWNER: KITCH PARTNERS
 UNPLATTED
 ZONED: SF-20

AERIAL MAPPING BY M.J. HARDEN
 DATE OF PHOTOGRAPHY 4/18/97
 B.M. - CITY OF WICHITA TABLET 39 FEET NORTH OF NORTH 1/4 CORNER
 SECTION 9, T27S, R2E.
 ELEV. = 196.23 (City Datum)
 ELEV. 1383.63 N.G.V.D.

PROJECT NO.	SHEET NO.	TOTAL SHEETS
468-76-245-83252-000-000-001	8	21

LEGEND

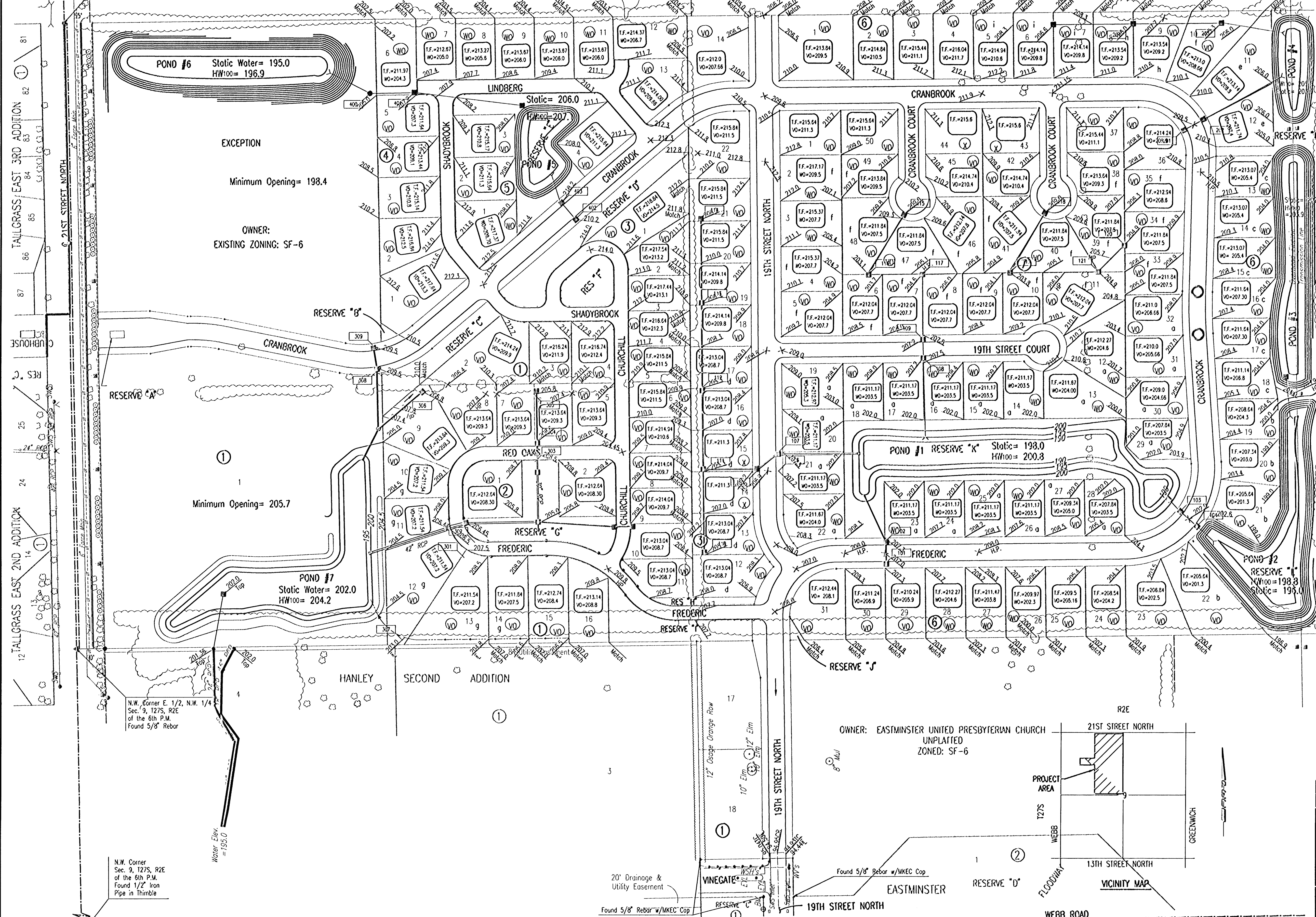
- STORM SEWER AND INLET
- STORM SEWER AND MANHOLE
- SPOT ELEVATION
- ▲ HIGH POINT ELEVATION
- MATCH EXISTING ELEVATION

- o MINIMUM OPENING= 203.5
- b MINIMUM OPENING= 201.3
- c MINIMUM OPENING= 205.4
- d MINIMUM OPENING= 208.7
- e MINIMUM OPENING= 207.0
- f MINIMUM OPENING= 207.5
- g MINIMUM OPENING= 205.7
- h MINIMUM OPENING= 209.2
- i MINIMUM OPENING= 209.8

- ⊗ STD. BASEMENT
- ⊙ VIEW-OUT BASEMENT
- ⊕ WALK-OUT BASEMENT

VO OR WO WAS CONSIDERED ACCEPTABLE
 IF THE TOP OF FOUNDATION WAS 5' OR
 LESS ABOVE THE PROPERTY LINE.
 TOP OF FOUNDATION AND MINIMUM OPENING
 ELEVATIONS SHOWN ARE THE MINIMUM
 ELEVATIONS ALLOWED BASED ON OVERFLOW
 ELEVATIONS. HIGHER ELEVATIONS MAY BE
 REQUIRED TO ACHIEVE ADEQUATE DRAINAGE
 AWAY FROM THE HOME.

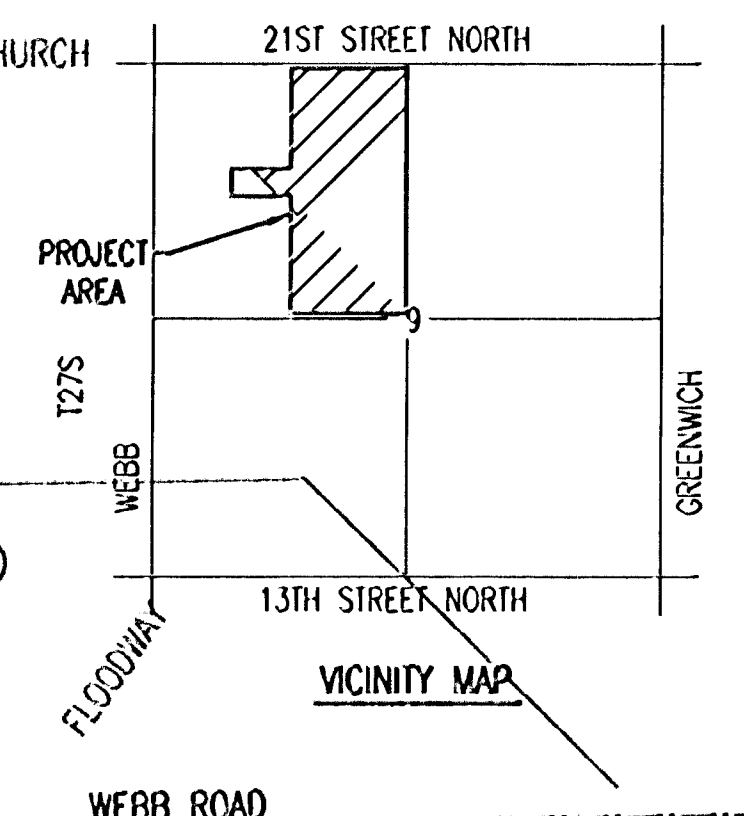
S.W. Corner E. 1/2, N.W. 1/4
 Sec. 9, T27S, R2E
 of the 6th P.M.
 Set 3/4" Iron Pipe



EXCEPTION
 Minimum Opening= 198.4
 OWNER:
 EXISTING ZONING: SF-6

Minimum Opening= 205.7

OWNER: EASTMINSTER UNITED PRESBYTERIAN CHURCH
 UNPLATTED
 ZONED: SF-6



No.	Revisions	By	Date
REMINGTON PLACE-PHASE I CITY OF WICHITA, KANSAS FOUR CORNER LOT GRADING PLAN			
Professional Engineering Consultants, P.A. 303 S. TOPKA • WICHITA, KANSAS 67202 316-262-2691 • FAX 316-262-3003			
Designed by	BER	Checked by	
Drawn by	BJS	Date	JUNE 2001
		Job No.	01158-1