

SYCAMORE POND ADDITION



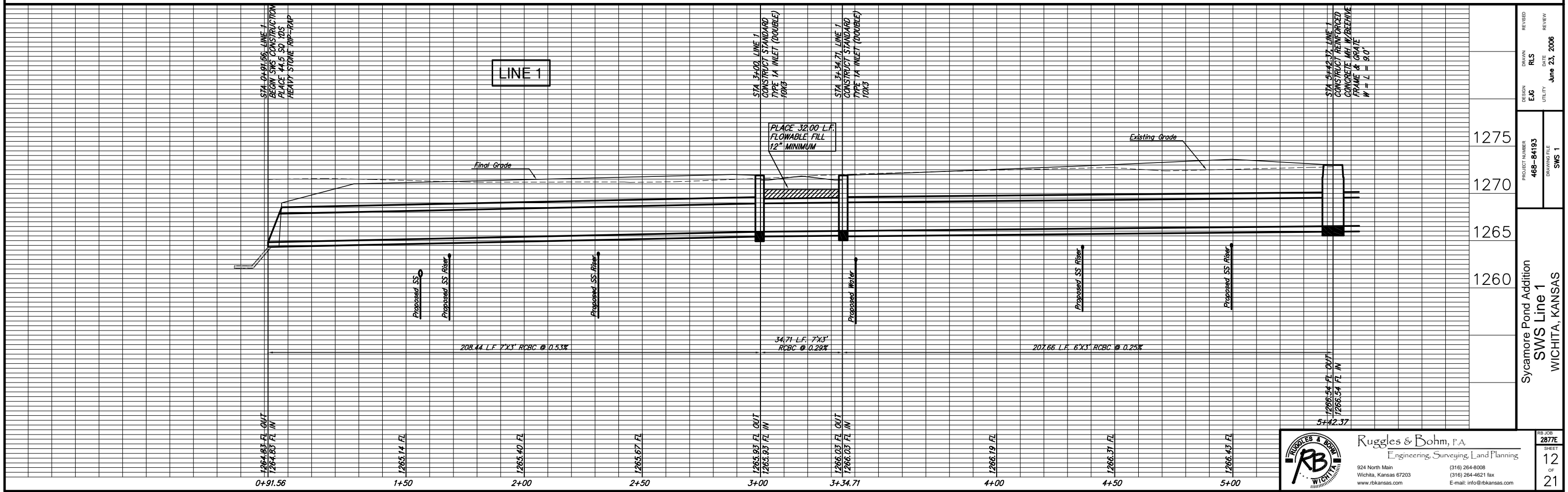
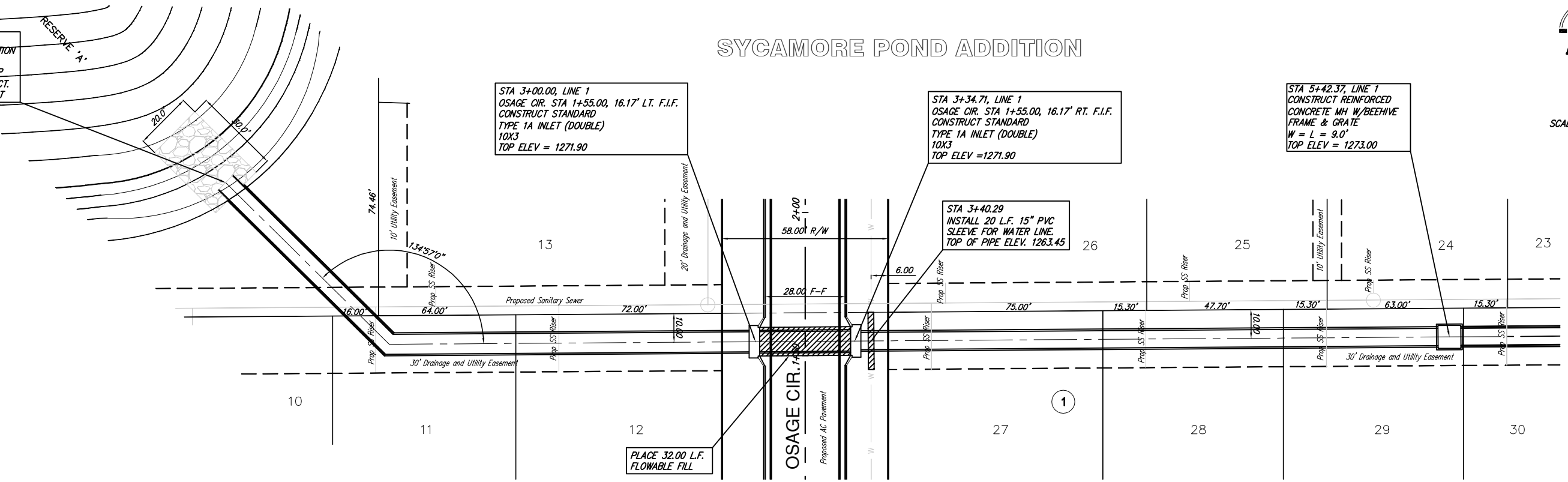
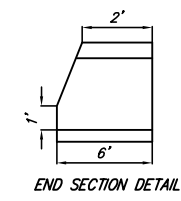
SCALE 1" = 20'

STA 0+91.56, LINE 1
BEGIN SWS CONSTRUCTION
PLACE 44.5 SQ YDS
HEAVY STONE RIP-RAP
INSTALL 7'X3' END SECT.
SEE DETAIL THIS SHEET

STA 3+00.00, LINE 1
OSAGE CIR. STA 1+55.00, 16.17' LT. F.I.F.
CONSTRUCT STANDARD
TYPE 1A INLET (DOUBLE)
10X3
TOP ELEV = 1271.90

STA 3+34.71, LINE 1
OSAGE CIR. STA 1+55.00, 16.17' RT. F.I.F.
CONSTRUCT STANDARD
TYPE 1A INLET (DOUBLE)
10X3
TOP ELEV = 1271.90

STA 5+42.37, LINE 1
CONSTRUCT REINFORCED
CONCRETE MH W/BEEHIVE
FRAME & GRATE
W = L = 9.0'
TOP ELEV = 1273.00



DESIGN	EJG	REVISION	DATE
DRAWN	RLS	REVIEW	DATE
PROJECT NUMBER	468-84193	DRAWING FILE	SWS 1
Sycamore Pond Addition			
SWS Line 1			
WICHITA, KANSAS			
RB JOB	2877E	SHEET	
Ruggles & Bohm, P.A.		12	
Engineering, Surveying, Land Planning		OF	
924 North Main		21	
Wichita, Kansas 67203			
www.rbkansas.com			
(316) 264-8008			
(316) 264-4621 fax			
E-mail: info@rbkansas.com			