

REMOVE TREES ONLY AS NECESSARY FOR CONSTRUCTION. SUBSIDIARY TO "SITE CLEARING & RESTORATION"

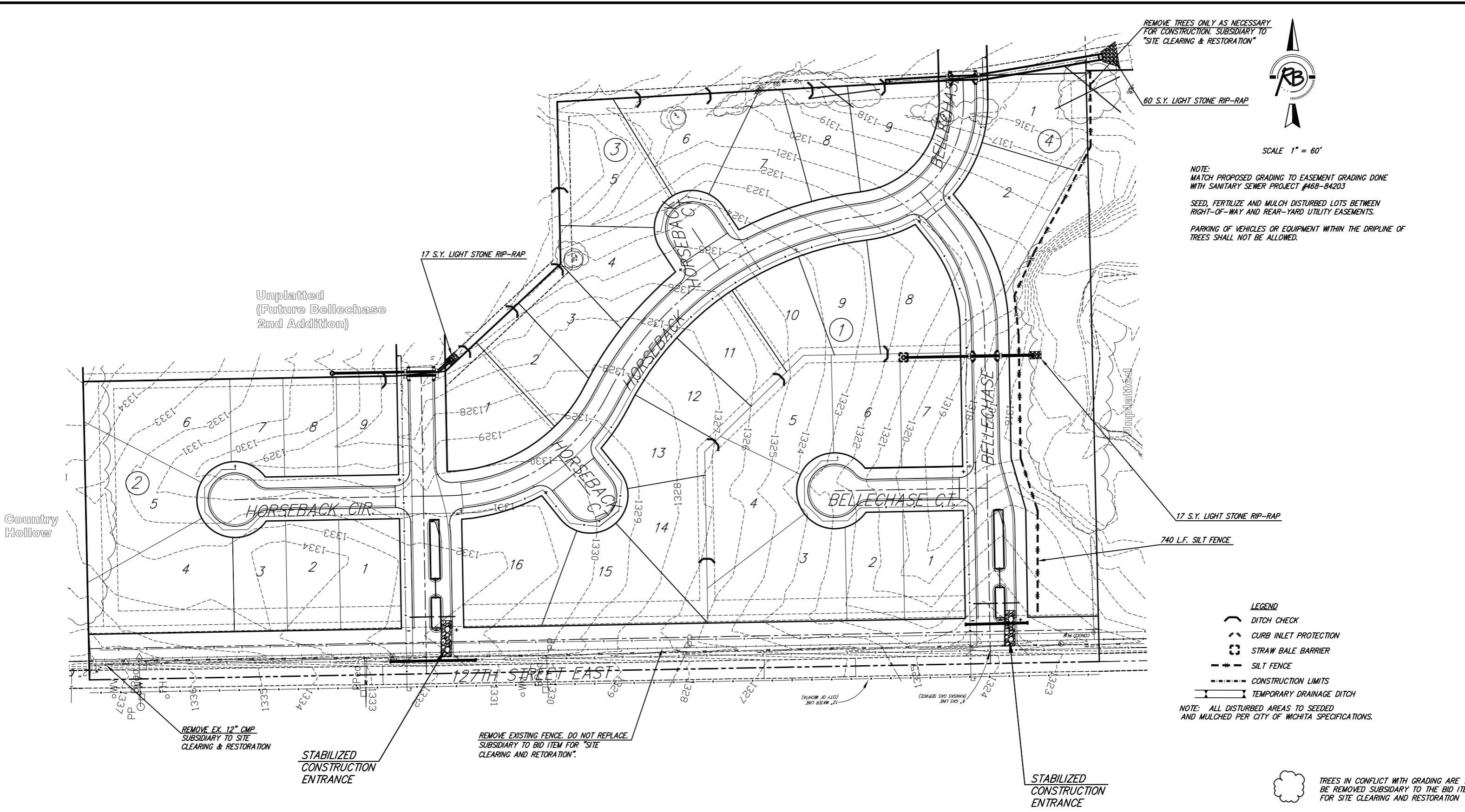


SCALE 1" = 60'

NOTE: MATCH PROPOSED GRADING TO EASEMENT GRADING DONE WITH SANITARY SEWER PROJECT #468-84203

SEED, FERTILIZE AND MULCH DISTURBED LOTS BETWEEN RIGHT-OF-WAY AND REAR-YARD UTILITY EASEMENTS.

PARKING OF VEHICLES OR EQUIPMENT WITHIN THE DRIPLINE OF TREES SHALL NOT BE ALLOWED.



- LEGEND**
- DITCH CHECK
 - CURB INLET PROTECTION
 - STRAW BALE BARRIER
 - SILT FENCE
 - CONSTRUCTION LIMITS
 - TEMPORARY DRAINAGE DITCH

NOTE: ALL DISTURBED AREAS TO BE SEED AND MULCHED PER CITY OF WICHITA SPECIFICATIONS.

TREES IN CONFLICT WITH GRADING ARE TO BE REMOVED SUBSIDIARY TO THE BID ITEM FOR SITE CLEARING AND RESTORATION

BELLECHASE
EROSION CONTROL PLAN
WICHITA, KANSAS

	Ruggles & Bohm, P.A. Engineering, Surveying, Land Planning		DESIGN: KWL DRAWN: MLP REVIEW: BHE
	924 North Main Wichita, Kansas 67203 www.rbkansas.com	(316) 264-8008 (316) 264-4621 fax E-mail: info@rbkansas.com	PROJECT NUMBER 468-84204
DRAWING FILE STORM {Site Grading}		PROJECT NUMBER 468-84204	

Unplatted
(Future Bellechase
2nd Addition)

Country
Hollow

REMOVE EX. 12" CMP
SUBSIDIARY TO SITE
CLEARING & RESTORATION

STABILIZED
CONSTRUCTION
ENTRANCE

REMOVE EXISTING FENCE. DO NOT REPLACE.
SUBSIDIARY TO BID ITEM FOR "SITE
CLEARING AND RESTORATION".

STABILIZED
CONSTRUCTION
ENTRANCE