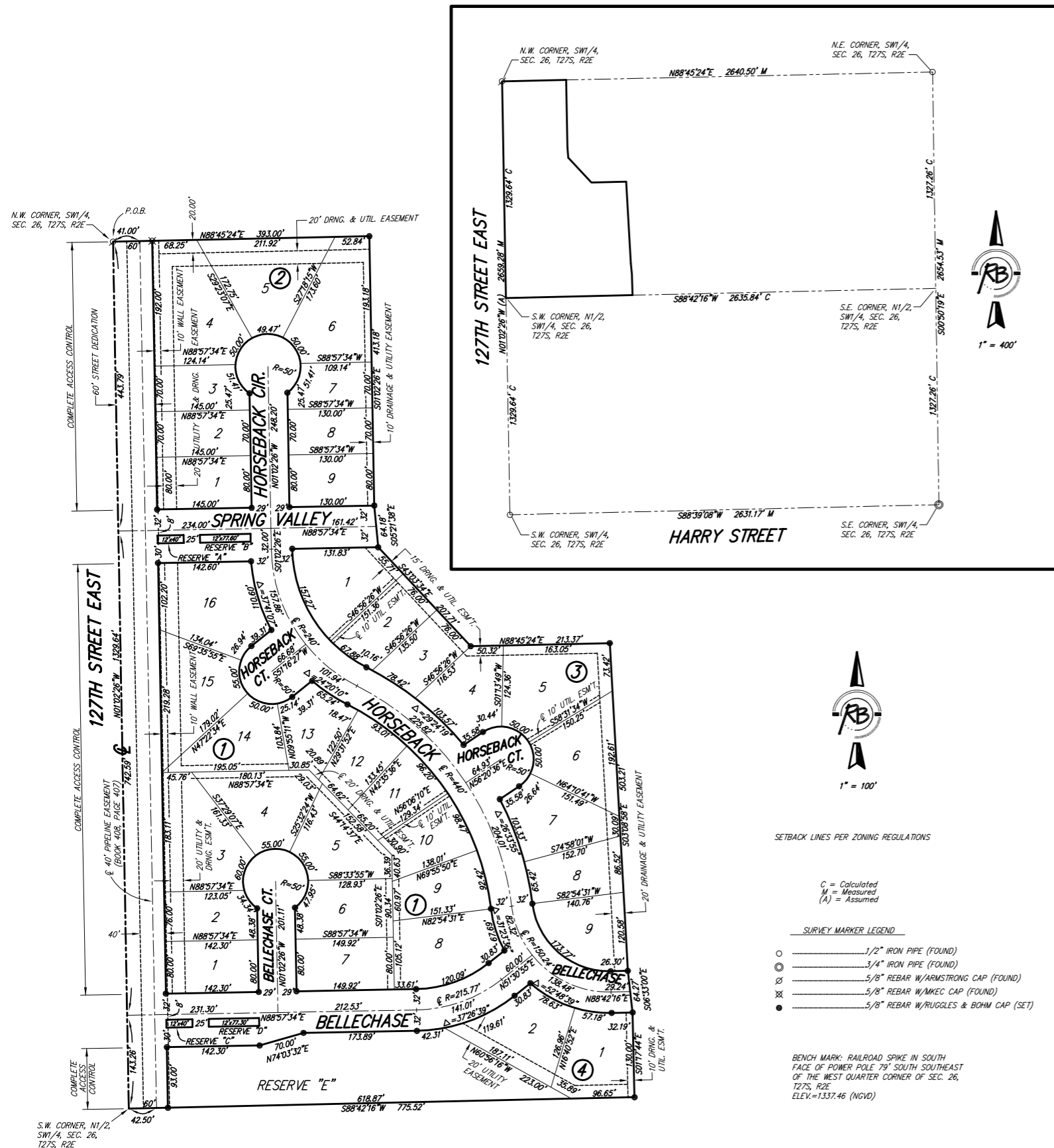


# BELLECHASE

An Addition to Wichita, Sedgwick County, Kansas



SETBACK LINES PER ZONING REGULATIONS

C = Calculated  
M = Measured  
(A) = Assumed

SURVEY MARKER LEGEND

- 1/2" IRON PIPE (FOUND)
- 3/4" IRON PIPE (FOUND)
- ⊗ 5/8" REBAR W/ARMSTRONG CAP (FOUND)
- ⊗ 5/8" REBAR W/MKEC CAP (FOUND)
- 5/8" REBAR W/RUGGLES & BOHM CAP (SET)

BENCH MARK: RAILROAD SPIKE IN SOUTH FACE OF POWER POLE 79' SOUTH SOUTHEAST OF THE WEST QUARTER CORNER OF SEC. 26, T27S, R2E  
ELEV.=1337.46 (NGVD)

State of Kansas)  
Sedgwick County) SS

We, Ruggles & Bohm, P.A., Land Surveyors in aforesaid county and state, do hereby certify that, under the supervision of the undersigned, we have surveyed and platted "BELLECHASE", An Addition to Wichita, Sedgwick County, Kansas, and that the accompanying plat is a true and correct exhibit of the property surveyed, described as follows:

LEGAL DESCRIPTION:

That part of the N1/2 of the SW1/4 of Sec. 26, T27S, R2E of the 6th P.M., Sedgwick County, Kansas described as beginning at the N.W. corner of said SW1/4; thence N88°45'24"E along the north line of said SW1/4, 393.00 feet; thence S01°02'26"E, parallel with the west line of said SW1/4, 413.18 feet; thence S05°21'38"E, 64.18 feet; thence S43°03'34"E, 207.71 feet; thence N88°45'24"E, parallel with said north line, 213.37 feet; thence S03°08'58"E, 503.21 feet; thence S06°33'00"E, 64.27 feet; thence S01°17'44"E, 130.00 feet to the south line of said N1/2; thence S88°42'16"W along said south line, 775.52 feet to the S.W. corner of said N1/2; thence N01°02'26"W along the west line of said SW1/4, 1329.64 feet to the place of beginning.

Ruggles & Bohm, P.A.

\_\_\_\_\_  
Thomas C. Ruggles  
Land Surveyor

Know all men by these presents that we, the undersigned, have caused the land described in the surveyor's certificate to be platted into Lots, Blocks, Reserves and Streets to be known as "BELLECHASE", An Addition to Wichita, Sedgwick County, Kansas. Access Controls as indicated are hereby granted to the appropriate governing body. The streets are hereby dedicated to and for the use of the public. Utility Easements are hereby granted for the construction and maintenance of all public utilities. Drainage Easements are hereby granted to the public as indicated for drainage purposes. Reserves "A", "B", "C" and "D" are hereby reserved for entry features, signage, irrigation, lighting and landscaping. Reserve "E" is hereby reserved for irrigation, walls, signage, gazebos, picnic areas/ tables with canopies, walks, lighting, landscaping, berms, drainage, drainage structures and utilities confined to easements. The Reserves shall be owned and maintained by the Home Owners Association for the addition. The Home Owners Association will be responsible for the reconstruction of improvements within Reserves "A", "B", "C" and "D" when 127th St. E. is reconstructed. The wall easements are hereby granted to the Home Owners Association for screening walls. A drainage plan has been developed for this plat; the property shall remain at established grades, or as modified with the approval of the City Engineer, and unobstructed to allow for the conveyance of storm water.

BELLECHASE DEVELOPMENT L.L.C.

\_\_\_\_\_  
Stephen G. Miller  
President

State of Kansas)  
Sedgwick County) SS

The foregoing instrument acknowledged before me, this \_\_\_\_\_ day of \_\_\_\_\_, 2006, by Stephen G. Miller, President, on behalf of BELLECHASE DEVELOPMENT L.L.C.

\_\_\_\_\_  
Mildred E. Franz  
Notary Public

My appointment expires \_\_\_\_\_

MINIMUM BUILDING PAD ELEVATION FOR LOWEST OPENING INTO STRUCTURES		
BLOCK	LOT NO.	ELEVATION (N.G.V.D.)
4	1, 2	1318.0

We, the undersigned, holders of a mortgage on the above described property, do hereby consent to this plat of "BELLECHASE", An Addition to Wichita, Sedgwick County, Kansas, this \_\_\_\_\_ day of \_\_\_\_\_, 2006.

Garden Plain State Bank

\_\_\_\_\_  
Patrick F. Waldon  
President

State of Kansas)  
Sedgwick County) SS

The foregoing instrument acknowledged before me, this \_\_\_\_\_ day of \_\_\_\_\_, 2006, by Patrick F. Waldon, President of Garden Plain State Bank on behalf of the Bank.

\_\_\_\_\_  
Notary Public

My appointment expires \_\_\_\_\_

This plat of "BELLECHASE", An Addition to Wichita, Sedgwick County, Kansas, has been submitted to and approved by the Wichita-Sedgwick County Metropolitan Area Planning Commission, Wichita, Kansas.

Dated this \_\_\_\_\_ day of \_\_\_\_\_, 2006.

Wichita-Sedgwick County Metropolitan Area Planning Commission

\_\_\_\_\_  
Harold L. Warner, Jr.  
Chair  
\_\_\_\_\_  
John L. Schlegel  
Secretary

This plat approved and all dedications shown hereon accepted by the

City Council of the City of Wichita, Kansas, this \_\_\_\_\_ day of \_\_\_\_\_, 2006.

At the Direction of the City Council  
\_\_\_\_\_  
Mayor  
Carlos Mayans  
\_\_\_\_\_  
City Clerk  
Karen Sublett

Reviewed in accordance with K.S.A. 58-2005 on this \_\_\_\_\_ day of \_\_\_\_\_, 2006.

\_\_\_\_\_  
Tricia L. Robello, LS #1246  
Deputy County Surveyor  
Sedgwick County Kansas

Entered on transfer record this \_\_\_\_\_ day of \_\_\_\_\_, 2006.

\_\_\_\_\_  
Don Brace  
County Clerk

State of Kansas)  
Sedgwick County) SS

This is to certify that this plat has been filed for record in the office of the Register of Deeds, this \_\_\_\_\_ day of \_\_\_\_\_, 2006, at \_\_\_\_\_ o'clock \_\_\_\_\_ M., and is duly recorded.

\_\_\_\_\_  
Bill Meek  
Register of Deeds

\_\_\_\_\_  
Tonya Buckingham  
Deputy

DWG FILE: SURVEY BASE  
PROJECT NO. 2668P  
MAY 22, 2006



Ruggles & Bohm, P.A.  
Engineering, Surveying, Land Planning

924 North Main (316) 264-8008  
Wichita, Kansas 67203 (316) 264-4621 fax  
www.rbkansas.com E-mail: info@rbkansas.com