

PRELIMINARY
NOT FOR
CONSTRUCTION

**PAVING STREETS AND INCIDENTAL DRAINAGE
THE TIMBERLANDS
ADDITION**

INLET HOOKUP & UNDERDRAIN DETAIL
SHEET TITLE
472-84297
PROJECT NUMBER

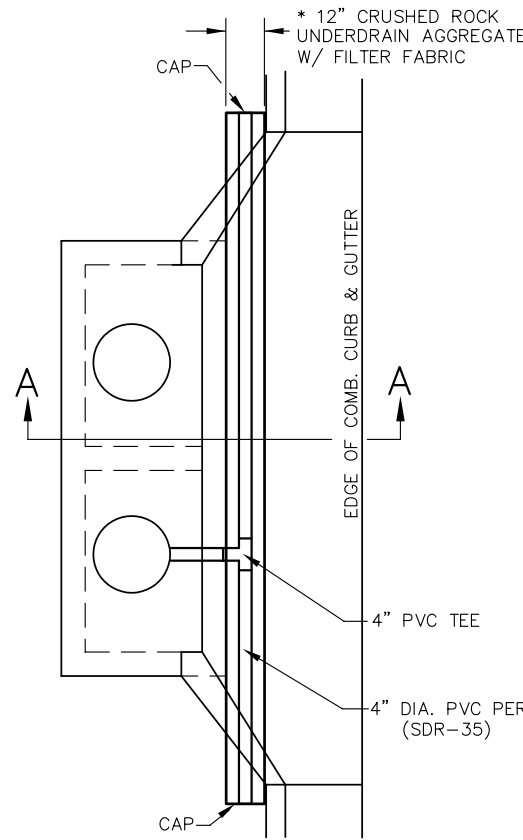
SRS
DESIGN BY
DM
DRAWN BY
GJA
CHECKED BY

ISSUED
AUG 2006
REVISED

SHEET NO.
7 of 16

J:\CIVIL\04416\DWG\PAVE\PHASET\04416ED4.DWG

PL07B: Thursday, August 10, 2006 @ 01:51PM

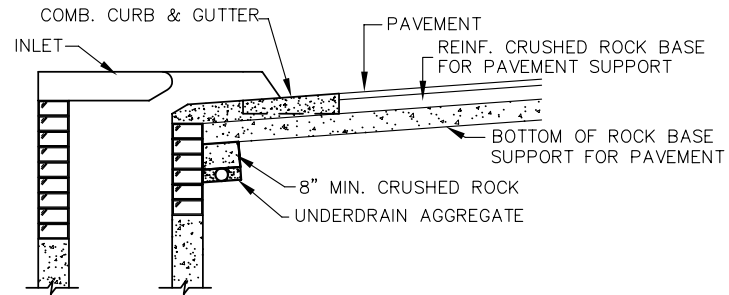


* UNDERDRAIN AGGREGATE PERCENT OF AGGREGATE RETAINED

1"	0
3/4"	0 to 10
3/8"	45 to 80
#4	90 to 100
#8	95 to 100

ROCK QUALITY SHALL CONFORM TO THE REQUIREMENTS SPECIFIED BY K.D.O.T. 1990 EDITION STANDARD SPECIFICATION SUBSECTION 1102 FOR DURABILITY CLASS 1.

PLAN

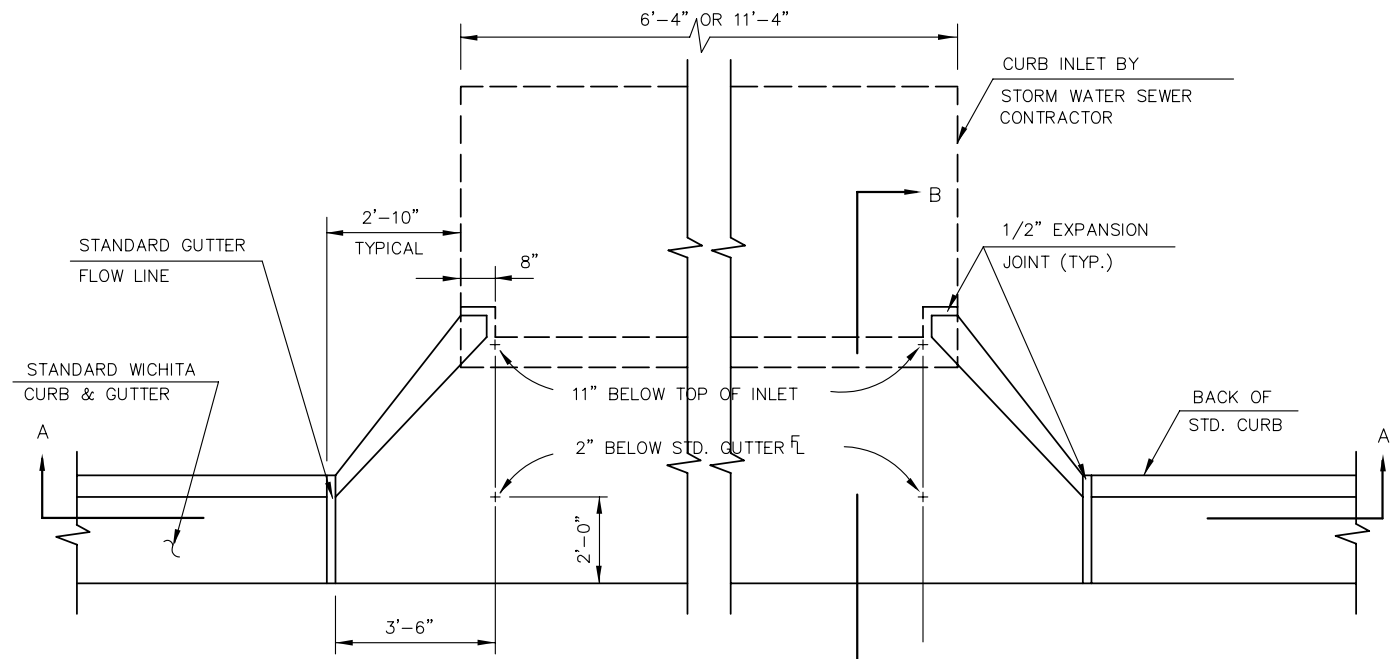


(MIN. 16 PERFORATIONS PER LIN. FT. @ 1/4" DIA.) PERFORATION TO BE ON BOTTOM HALF

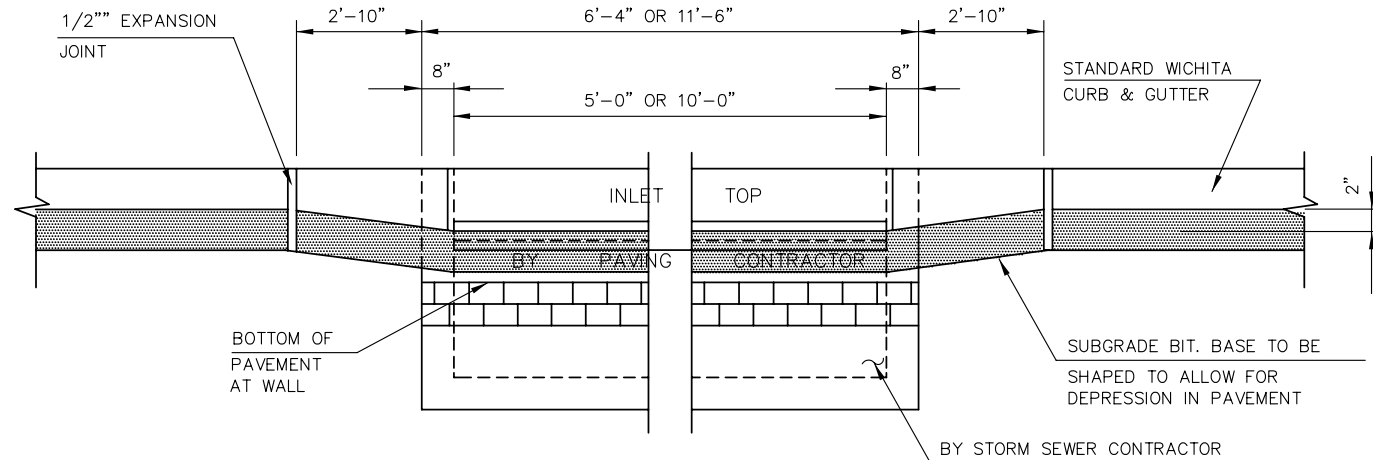
SECTION A-A

NOTE: PLACE 4" PVC PERFORATED PIPE AT ALL DRAINAGE SUMP LOCATIONS. COST OF UNDERDRAIN SYSTEM TO BE INCIDENTAL TO THE REINFORCED CRUSHED ROCK SUBGRADE. INLET TYPE MAY VARY FROM THAT SHOWN.

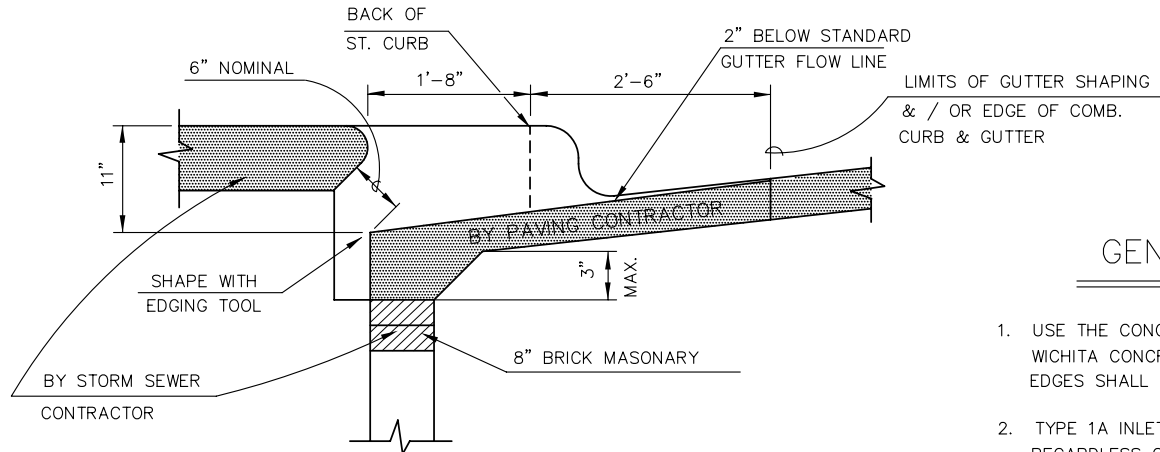
PAVEMENT UNDERDRAIN DETAIL



PLAN



SECTION A-A



SECTION B-B

TYPE 1A INLET HOOKUP

(BY PAVING CONTRACTOR)

GENERAL NOTES

1. USE THE CONCRETE MIX SPECIFIED FOR CITY OF WICHITA CONCRETE PAVEMENT. ALL EXPOSED EDGES SHALL BE FINISHED WITH AN EDGING TOOL.
2. TYPE 1A INLET HOOKUP WILL BE PAID EACH REGARDLESS OF SIZE.
3. ADDITIONAL CURB & GUTTER CONSTRUCTION NECESSARY TO CONNECT SET BACK INLET TO PAVEMENT WILL BE PAID FOR AT THE UNIT PRICE BID FOR EACH INLET