

Proposed 5" A.C. Pavement on 5" Crushed Rock Base

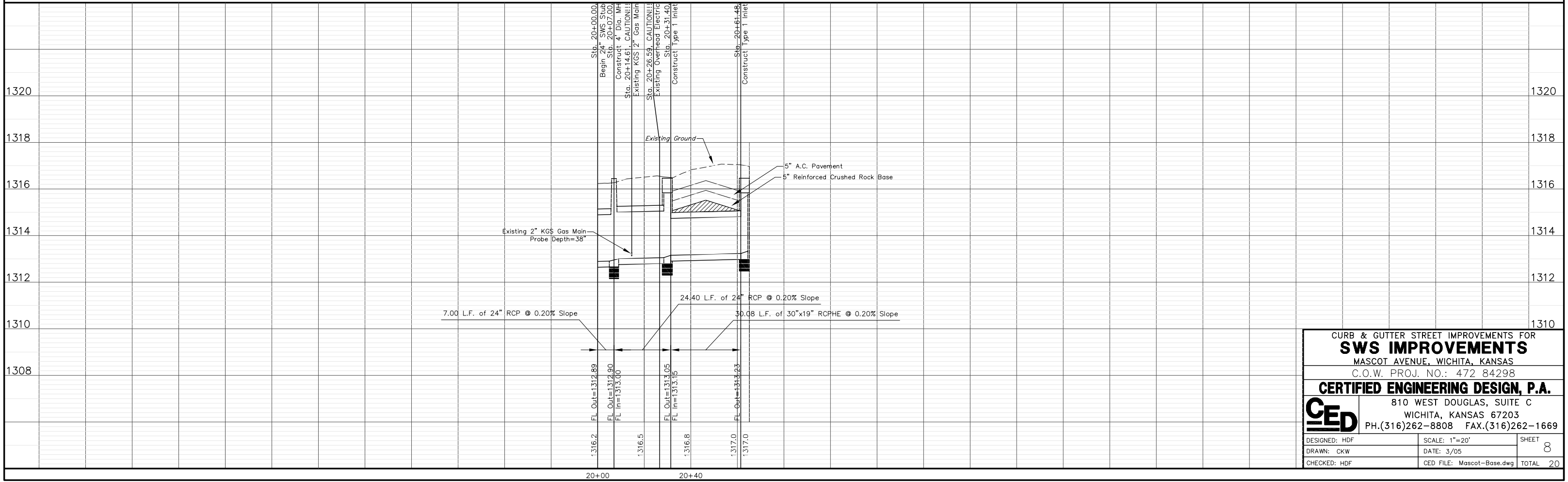
Proposed Concrete Drives, Valley Gutters, Curb & Gutter, etc.

UTILITY LEGEND

- = Catv Box
- = Guard Post/Bollard
- = Guy Anchor
- = Guy Pole
- = Light Pole
- = Mailbox
- = Gas Meter
- = Power Pole
- = Sign
- = San. Sewer Manhole
- = Storm Sewer Manhole
- = Telephone Riser
- = Water Meter
- = Water Valve
- = Water Well
- = Fire Hydrant
- = Coniferous Tree
- = Deciduous Tree
- = Overhead Electric
- = Gas Line
- = Water Line

UTILITIES SHOWN REPRESENT THE BEST INFORMATION AVAILABLE FOR DESIGN. ADDITIONAL UTILITIES MAY BE PRESENT ON THIS PROJECT. THE CONTRACTOR SHALL BE RESPONSIBLE FOR DETERMINING THE EXACT LOCATION, DEPTH AND SIZE OF ALL UNDERGROUND UTILITIES PRIOR TO CONSTRUCTION. THE CONTRACTOR SHALL BE LIABLE FOR ANY DAMAGE CAUSED BY THE FAILURE TO DO SO.

SWS IMPROVEMENTS



CURB & GUTTER STREET IMPROVEMENTS FOR
SWS IMPROVEMENTS
 MASCOT AVENUE, WICHITA, KANSAS
 C.O.W. PROJ. NO.: 472 84298

CERTIFIED ENGINEERING DESIGN, P.A.
 810 WEST DOUGLAS, SUITE C
 WICHITA, KANSAS 67203
 PH.(316)262-8808 FAX.(316)262-1669

CED

DESIGNED: HDF	SCALE: 1"=20'	SHEET
DRAWN: CKW	DATE: 3/05	8
CHECKED: HDF	CED FILE: Mascot-Base.dwg	TOTAL 20