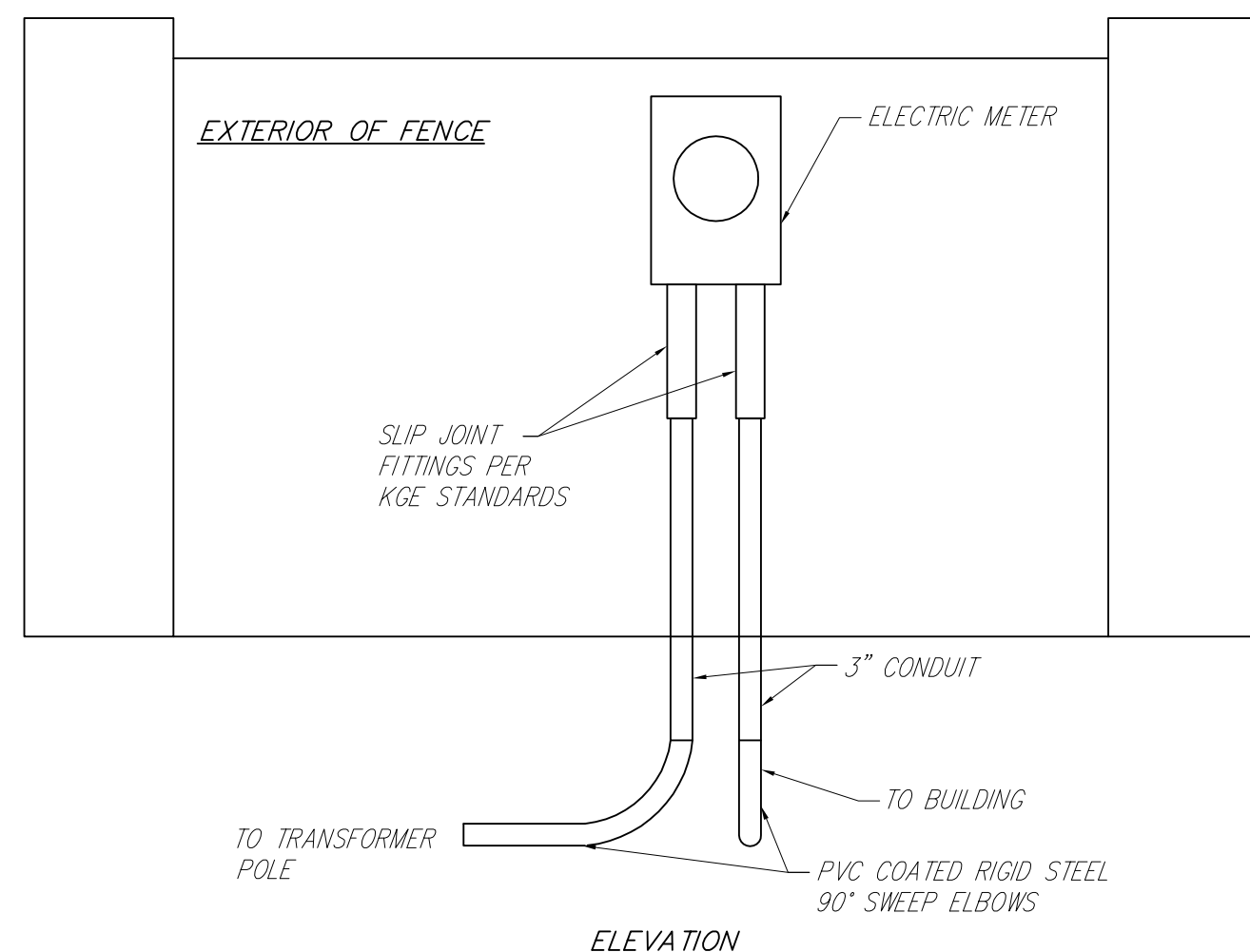
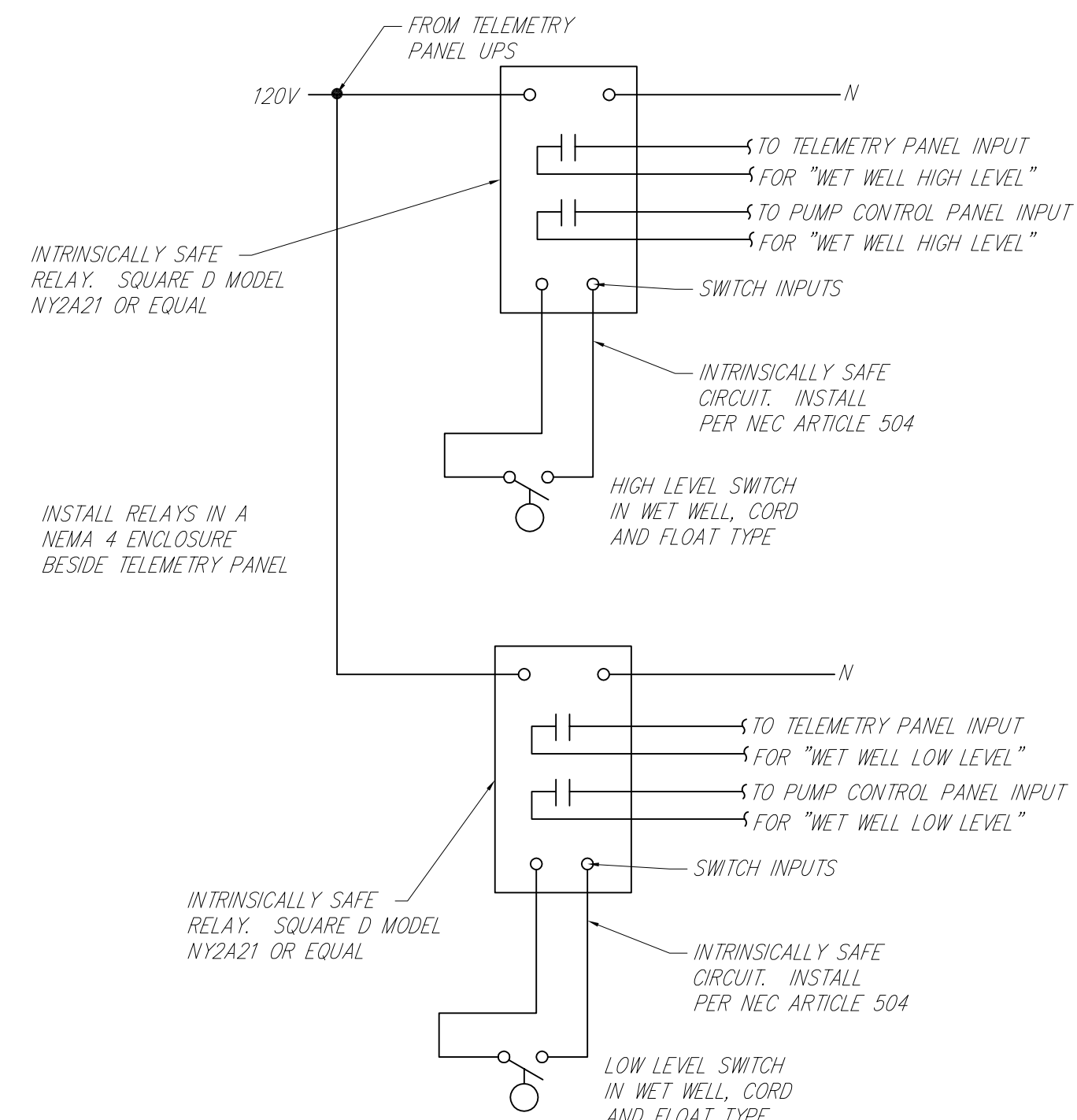


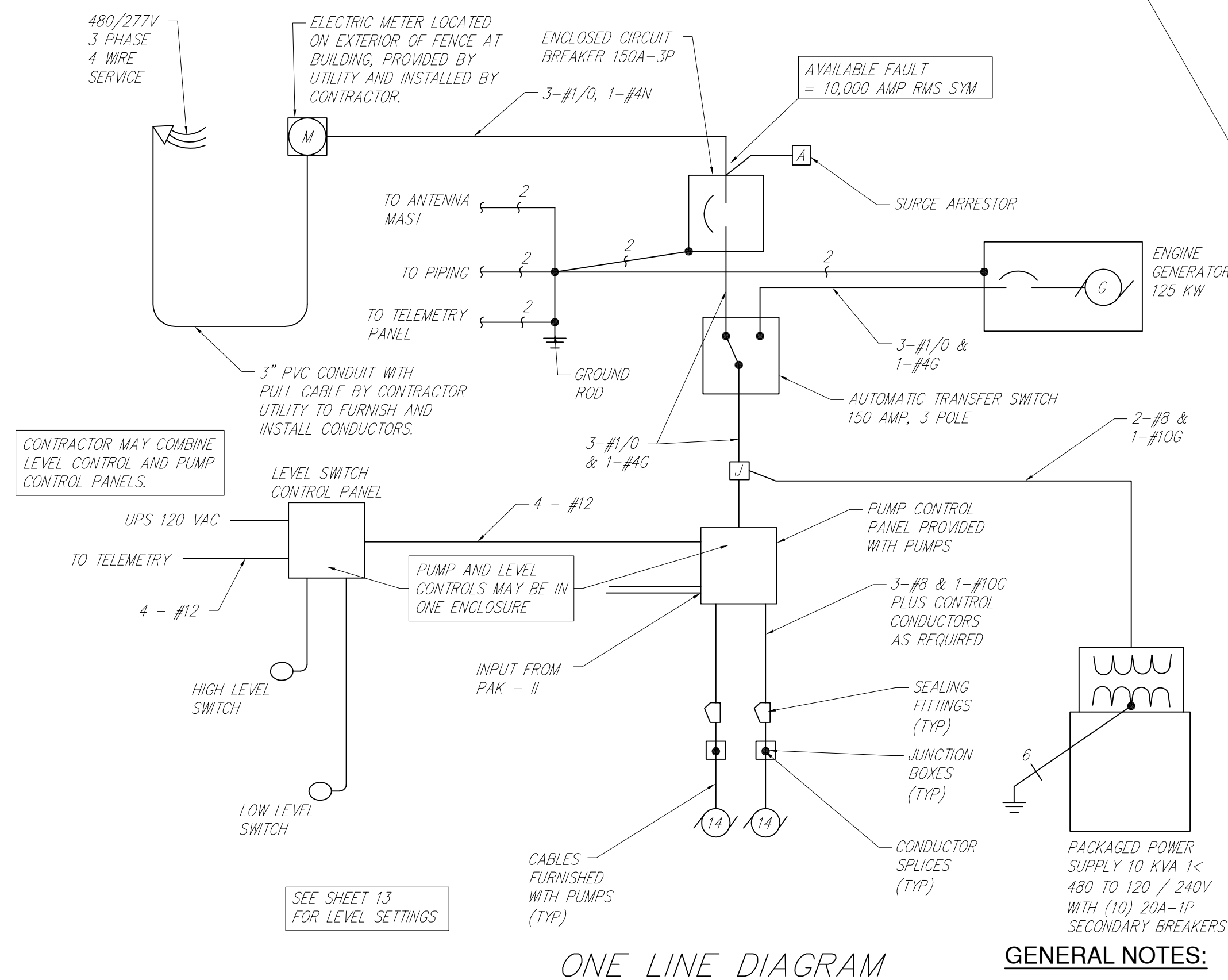
FOUNDATION TELEMETRY TOWER



ELECTRIC METER INSTALLATION



LEVEL SWITCH CONTROL PANEL



ONE LINE DIAGRAM

ELECTRICAL LEGEND

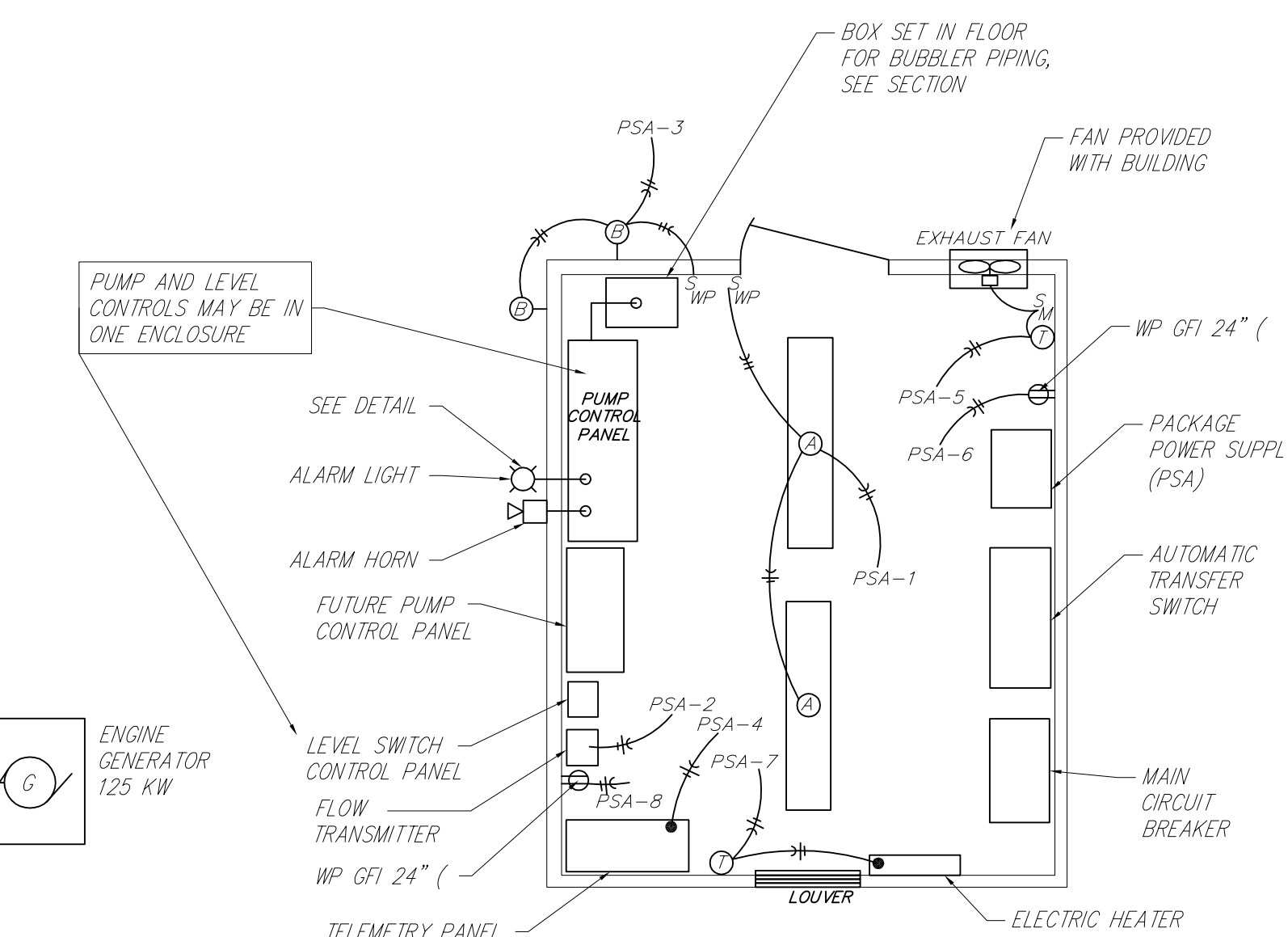
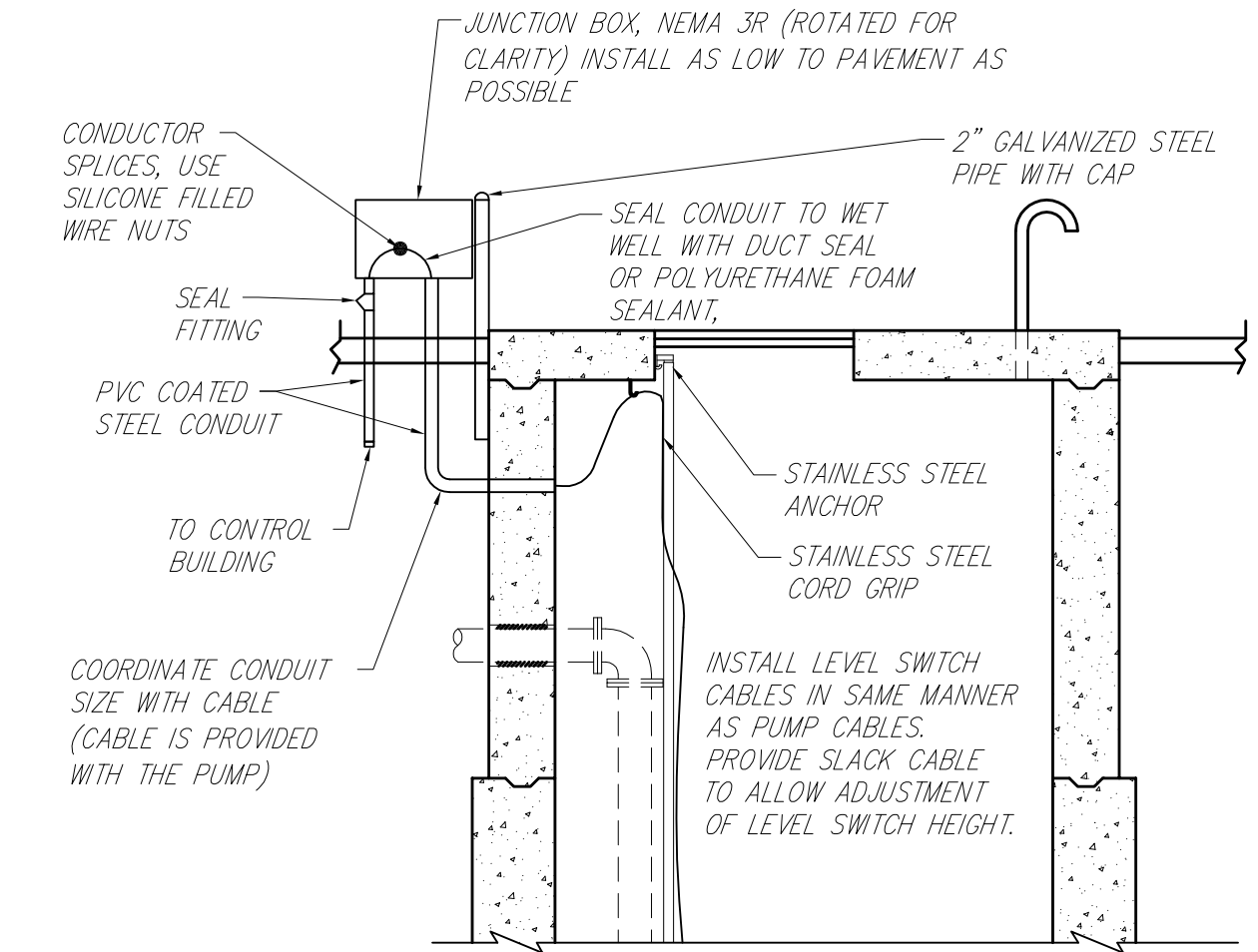
- CONDUIT AND WIRING, ARROWS INDICATE HOMERUN TO PANEL. HATCH MARKS INDICATE NUMBER OF CONDUCTORS IF MORE THAN TWO. NUMBER INDICATES SIZE IF OTHER THAN #12 AWG.
- EQUIPMENT GROUNDING CONDUCTOR IN CONDUIT WITH CIRCUIT(S). NUMBER INDICATES SIZE IF OTHER THAN #12 AWG.
- UNDERGROUND CONDUIT AND WIRING.
- DUPLEX RECEPTACLE 20A, NEMA CONFIGURATION 5-20R.
- MOTOR, HP INDICATED
- INDICATES WEATHERPROOF
- POWER POLE
- SURGE ARRESTER

GENERAL NOTES:

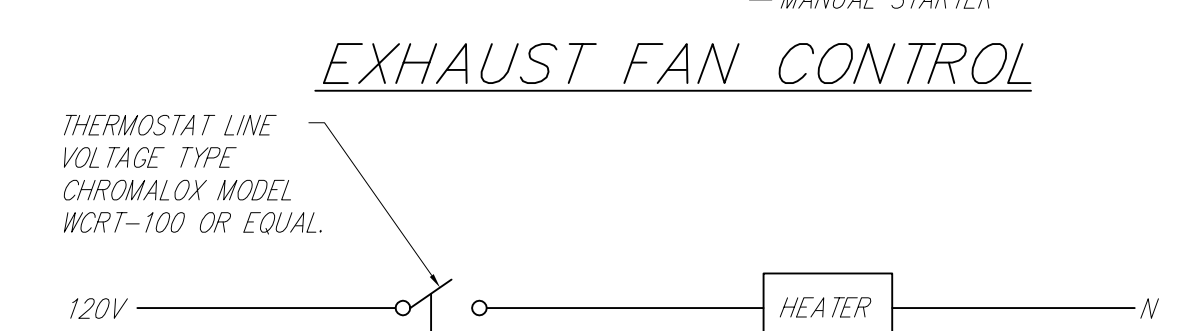
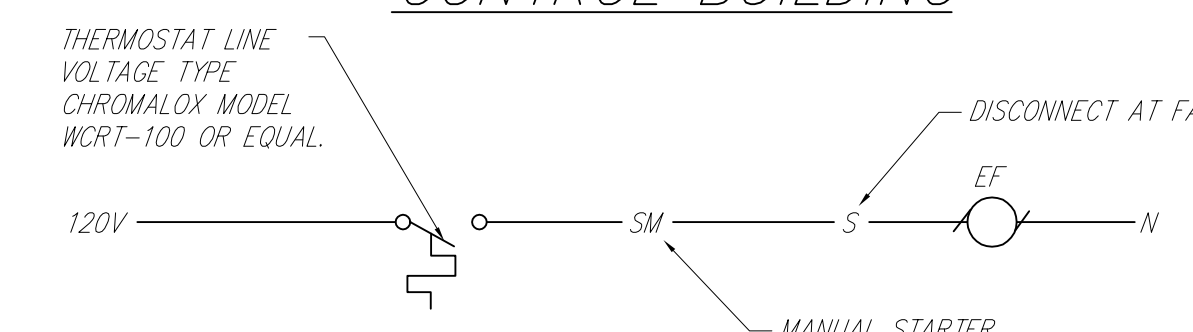
1. COMPLETE ALL WORK IN ACCORDANCE WITH THE NATIONAL ELECTRICAL CODE (NEC), NATIONAL ELECTRICAL SAFETY CODE (NESC), AND LOCAL REGULATIONS.
2. ALL ELECTRICAL EQUIPMENT SHALL BE U.L. LISTED.
3. SEE SPECIFICATIONS FOR ADDITIONAL REQUIREMENTS.
4. THE CONSTRUCTION DRAWINGS ARE DIAGRAMMATIC IN NATURE AND SHOW RELATIVE LOCATIONS OF DEVICES AND EQUIPMENT. COORDINATE WITH THE ACTUAL EQUIPMENT INSTALLED.
5. COORDINATE ELECTRICAL WORK WITH THE WORK OF OTHER TRADES.
6. CONTRACTOR IS RESPONSIBLE TO LOCATE AND PROTECT UTILITY LINES AND PIPING IN THE AREA UNDER CONSTRUCTION.
7. ALL STARTERS AND CONTRACTORS SHALL HAVE 120 VOLT CONTROLS. PROVIDE FUSED CONNECTION FOR UNITS OPERATING AT 120 VOLTS LINE TO NEUTRAL. PROVIDE FUSED CONTROL POWER TRANSFORMERS FOR UNITS OPERATING ABOVE 120 VOLTS.
8. ALL CHARGES FROM WESTAR TO INSTALL AND/OR MODIFY ELECTRIC SERVICE TO THESE FACILITIES WILL BE PAID BY THE CONTRACTOR.
9. A #2 BSD COPPER GROUND CONDUCTOR SHALL BE INSTALLED TO PIPING IN VALVE VAULT, 30" MIN. DEPTH.

TELEMETRY NOTES:

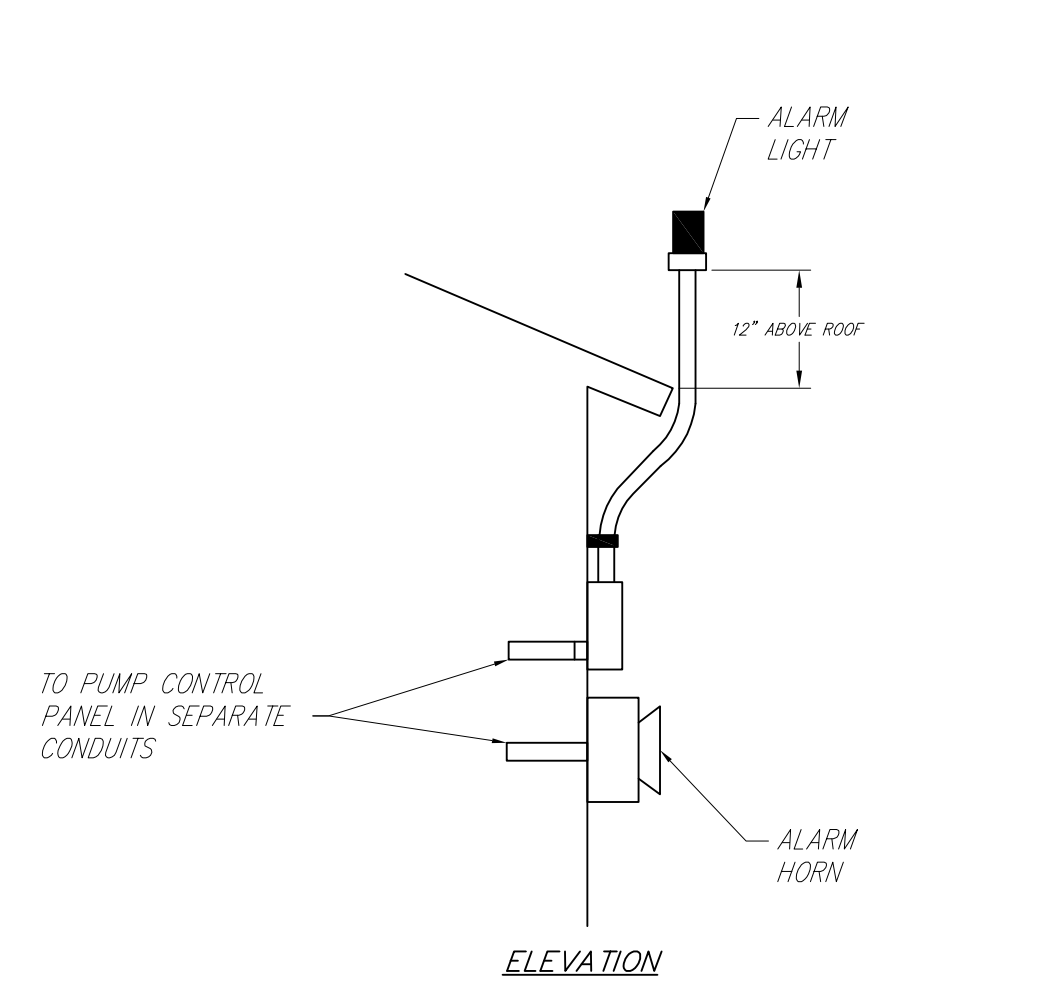
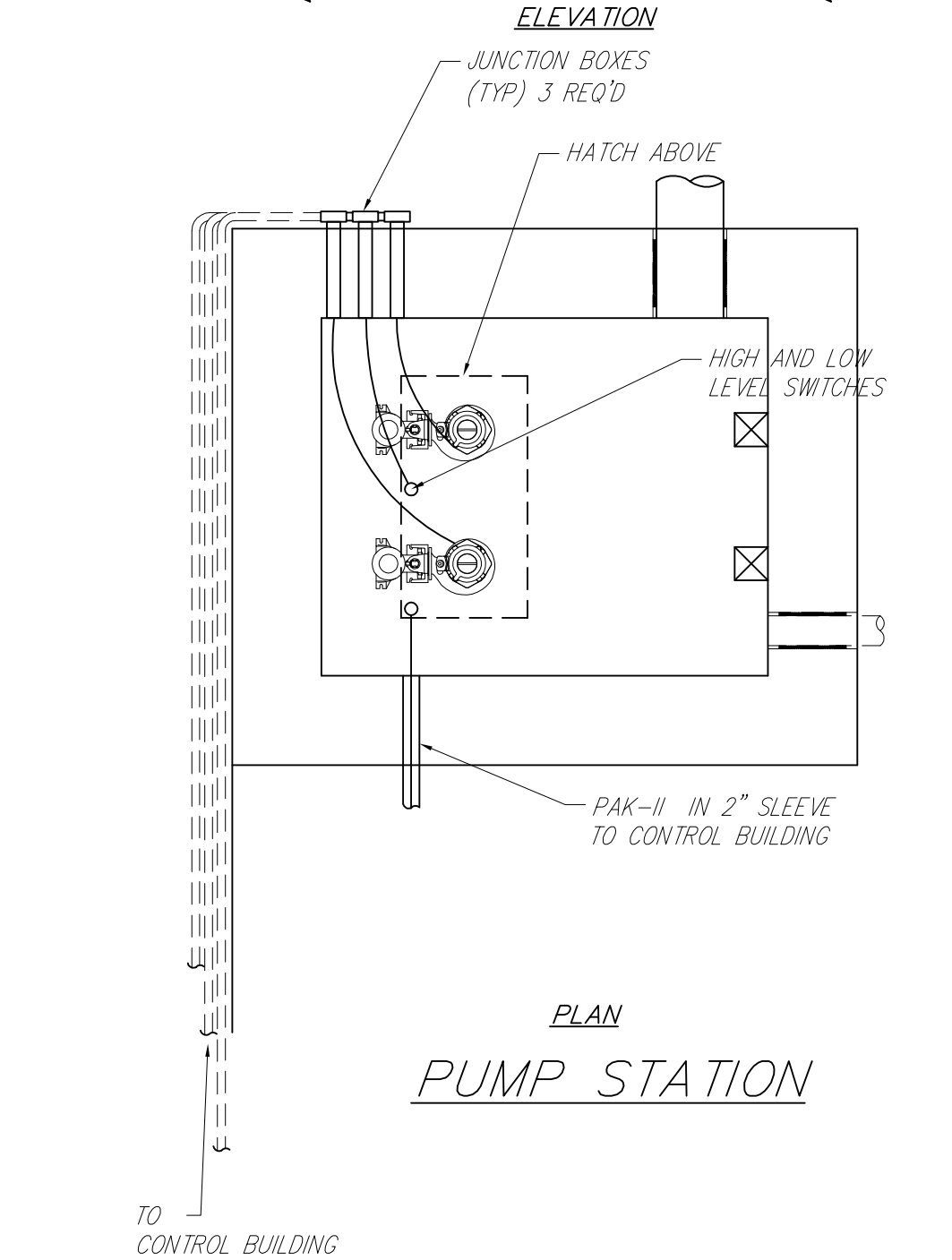
1. ALL TELEMETRY EQUIPMENT SHALL MEET CITY OF WICHITA SPECIFICATIONS.
2. CONTRACTOR TO COORDINATE WITH ROBERT BIGLEY AT 269-4769 FOR TELEMETRY SETTINGS.
3. INSTALL OWNER PROVIDED COAXIAL CABLE BETWEEN TELEMETRY PANEL AND ANTENNA.
4. OWNER WILL PROVIDE HARDWARE AND SOFTWARE MODIFICATIONS TO TELEMETRY PANEL.



CONTROL BUILDING



ELECTRIC HEATER CONTROL



ALARM LIGHT AND HORN DETAIL

REV. 7-10-07

MAIN 16, SS #23
ELECTRICAL DETAILS
WICHITA, SEDGWICK COUNTY, KANSAS

Ruggles & Bohm, P.A.
Engineering, Surveying, Land Planning

924 North Main
Wichita, Kansas 67203
www.rbkansas.com

(316) 264-8008
(316) 264-4621 fax
E-mail: info@rbkansas.com

DRAWING FILE: lift station

PROJECT NUMBER: 468-83958

DATE: Mar. 28, 2007

| | | | | |
|--------|-----|---------|-----|-------|
| DESIGN | PDC | DRAWN | PDC | SHEET |
| REVIEW | | UTILITY | | 16 |
| | | | | OF |
| | | | | 24 |