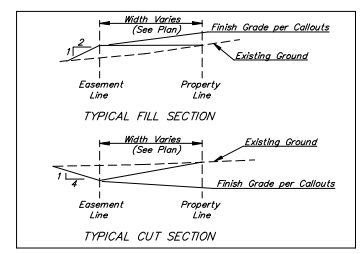
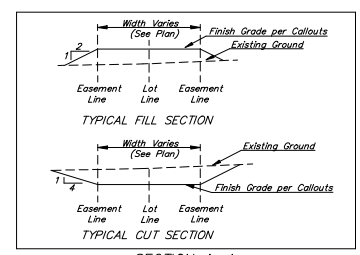


Scale: 1" = 80'

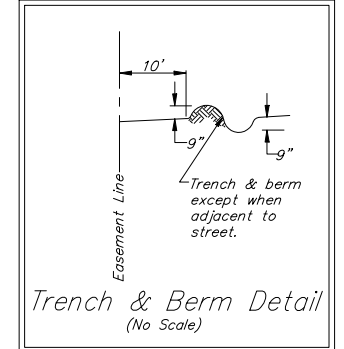
- EROSION CONTROL PLAN LEGEND**
(Installation Details Found in the SW2 Plan)
- LIGHT STONE RIP-RAP
 - DROP INLET PROTECTION
 - CURB INLET PROTECTION
 - STRAW BALE BARRIERS
 - SILT FENCING
 - EARTH DIKES
 - VEGETATED AREA LEFT UNDISTURBED



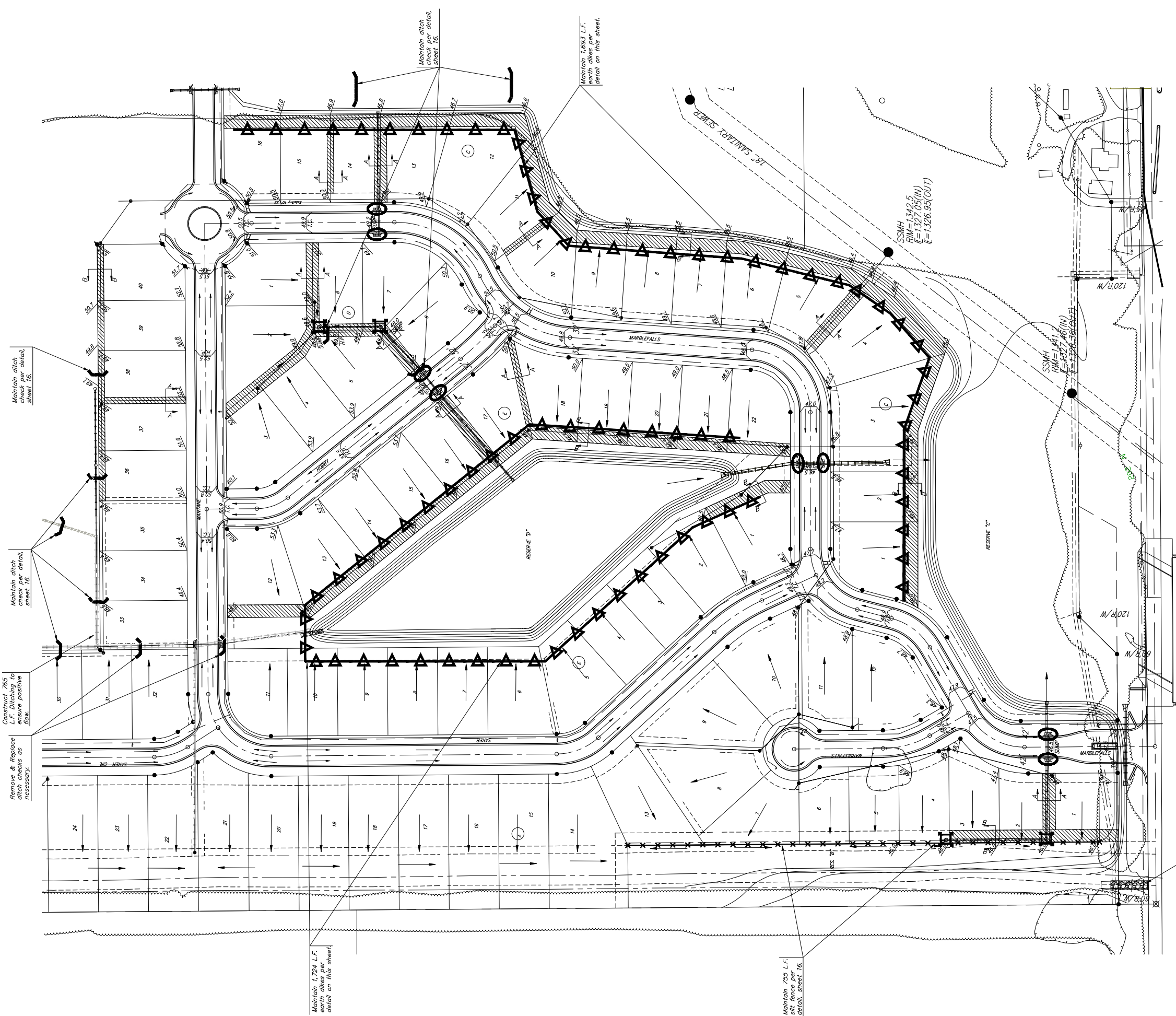
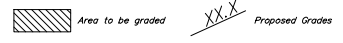
NOTE: Contractor shall remove & replace existing erosion control measures as necessary for construction. Contractor shall be required to maintain all on-site erosion control items until final acceptance by the City of Wichita.

Trees and shrubs in public right-of-way which are in direct conflict with proposed new construction shall be removed by the Contractor ONLY with the Developer or Baughman Company approval. Trees and shrubs which are not in direct conflict with proposed new construction shall be saved and protected from damage.

Maintain one construction entrance per detail, sheet 11.



Easements have been rough graded with mass grading. Contractor shall fine grade the easements as shown to within $\pm 0.3'$ of the elevations given on plan. The contractor shall "straight" grade the easements between the elevations given. Where a callout designates "Match," the contractor will grade to the existing ground elevation. All costs for easement grading shall be included in lump sum bid item "Easement Grading."



Maintain ditch check per detail, sheet 16.

Construct 765 L.F. Ditching to ensure positive flow.

Remove & Replace areas as necessary.

Maintain 1,724 L.F. earth dikes per detail, sheet 16.

Maintain 755 L.F. silt fence per detail, sheet 16.

Maintain one temporary construction entrance.

Baughman Falcon Falls 3rd Addition - Ph. 1
Erosion Control

Baughman Company, P.A. 315 Ellis St. Wichita, KS 67211 P 316-262-7271 F 316-262-0149
ENGINEERING | SURVEYING | PLANNING | LANDSCAPE ARCHITECTURE

PROJECT NUMBER 472-84624	DESIGN JEB	DRAWN JEB
REVISIONS:	APPROVED	DATE 08/06
	SCALE Noted	SHEET 17 OF 32

E:\eng\Falcon Falls 3rd\Str\ecmap1.dwg 05-12-2014