

**CURVE TABLE-C1**

$\Delta = 32'35''10''$  R = 207.00' T = 117.73' L = 179.85' LC = 116.15'

CURVE DATA BASED ON CENTERLINE  $\Delta / 2 = 16'17'35''$

STATION	ARC	9'Off Ltcb	9'Off Rtcb	DEFLECTION	TOTAL DEFLECTION
11+12.82	-	-	-	00'00'00"	00'00'00"
11+25.00	12.10'	12.60'	-	00'40'29"	01'40'29"
11+50.00	25.50'	26.01'	-	03'27'36"	05'08'04"
11+75.00	25.50'	26.01'	-	03'27'36"	08'35'40"
12+00.00	25.50'	26.01'	-	03'27'36"	12'03'15"
12+25.00	25.50'	26.01'	-	03'27'36"	15'30'51"
12+30.55	5.63'	5.86'	-	00'46'44"	16'17'35"

Def/Ft = 8.30374 Min.

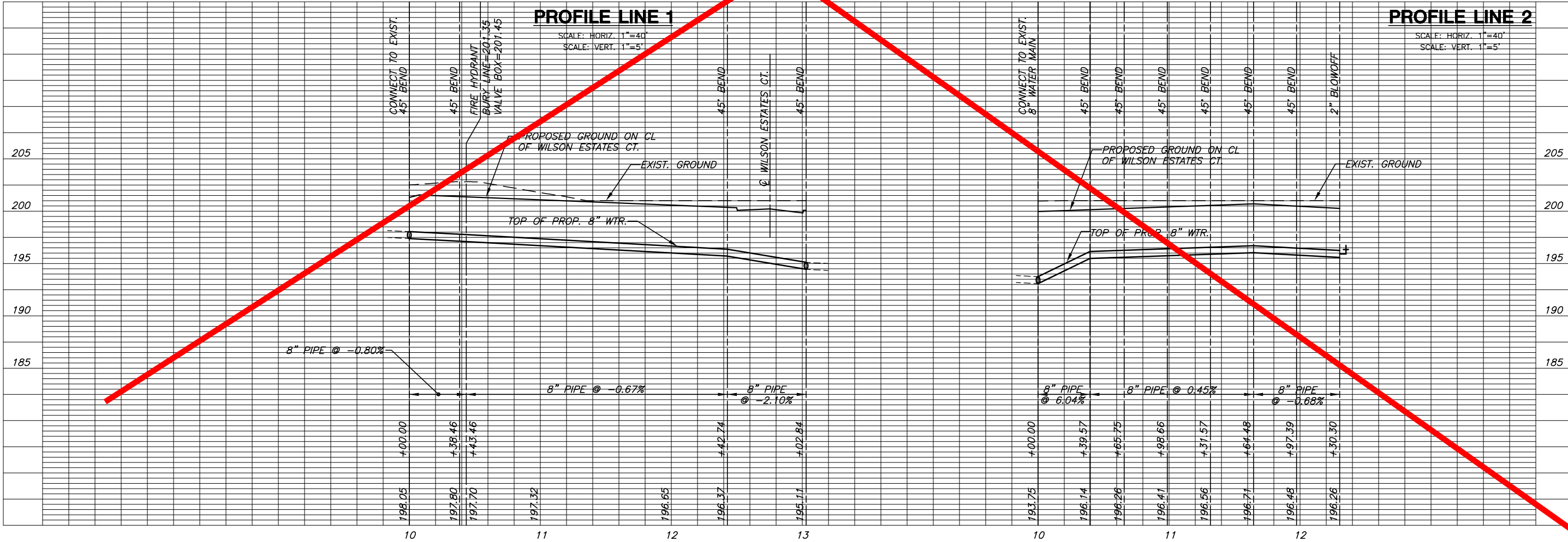
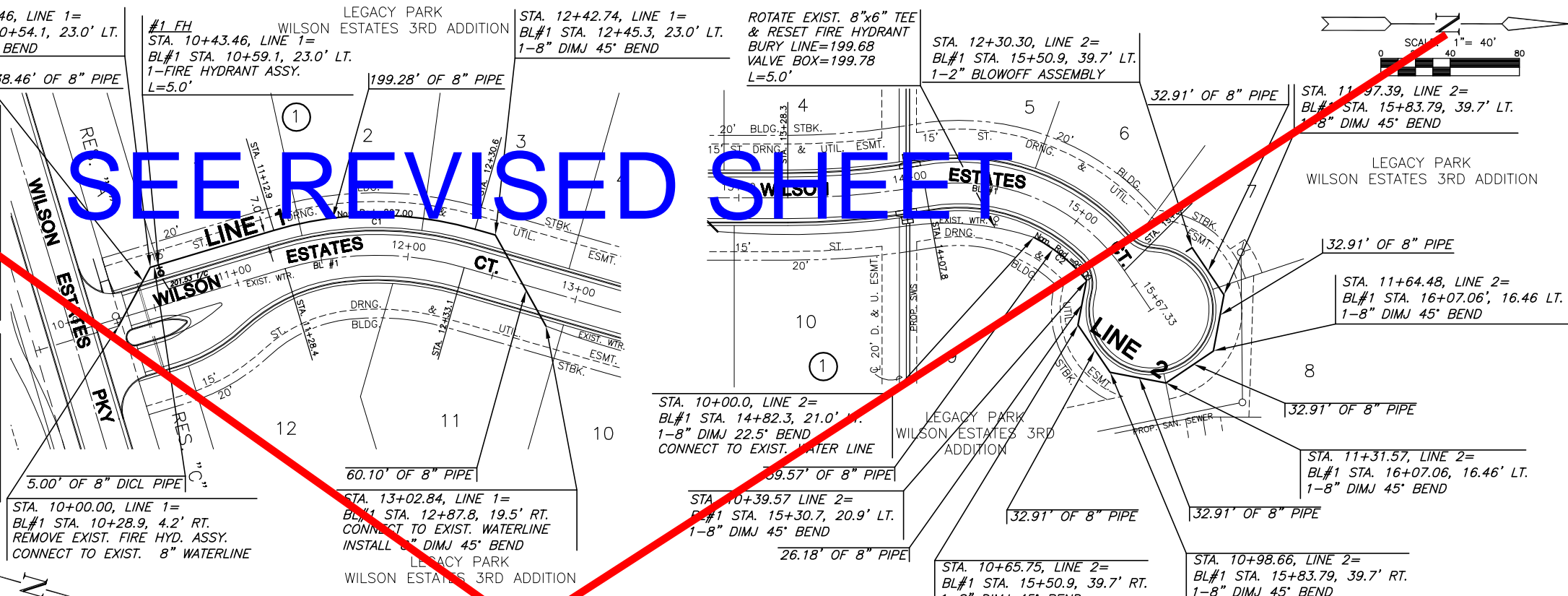
**CURVE TABLE-C2**

$\Delta = 23'51'55''$  R = 95.00' T = 20.08' L = 39.57' LC = 39.28'

CURVE DATA BASED ON CENTERLINE  $\Delta / 2 = 11'55'57''$

STATION	ARC	9'Off Ltcb	9'Off Rtcb	DEFLECTION	TOTAL DEFLECTION
10+00.00	-	-	-	00'00'00"	00'00'00"
10+25.00	25.00'	26.63'	-	07'32'20"	07'32'20"
10+39.57	14.57'	15.55'	-	04'23'37"	11'55'58"

Def/Ft = 18.09340 Min.



SEE REVISED SHEET

**PUBLIC IMPROVEMENT PLANS FOR**  
**LEGACY PARK**  
**WILSON ESTATES 3RD ADD.**  
**WICHITA, KANSAS**

**LINE 1 & 2**

SHEET TITLE

PROJECT NUMBER: 05753

DESIGN BY: SRS

DRAWN BY: KWS

CHECKED BY: GJA

ISSUED: JUNE 2006

REVISIONS:

SHEET NO. 7 of 25

PLOTTER: Tuesday, June 27, 2006 @ 02:33PM

J:\05753\Draw\WTR\05753C1