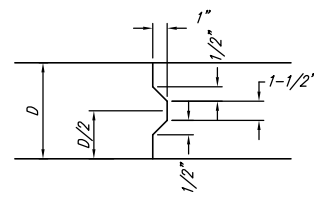
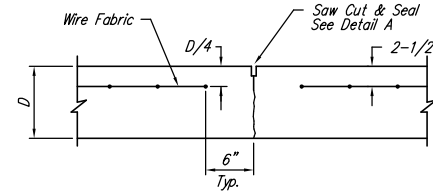


EXPANSION JOINT

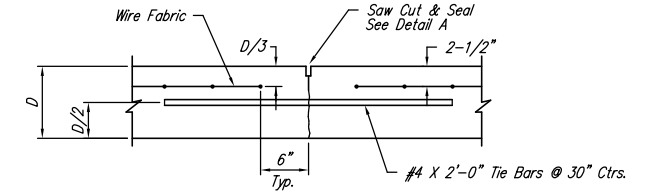
NOTE: Extra Thickness to be Subsidiary to Price of Square Yards Pavement



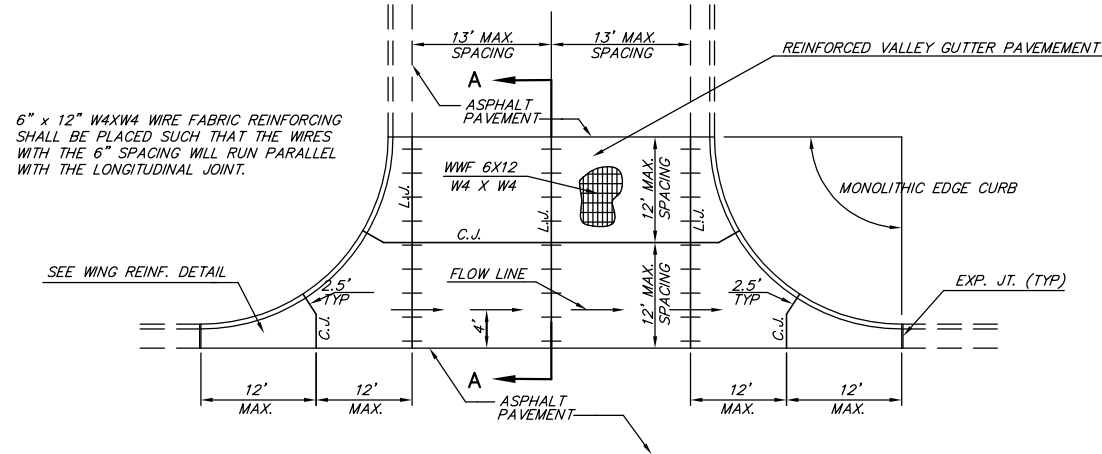
KEYWAY DETAIL



CONTRACTION JOINT DETAIL (C.J.)

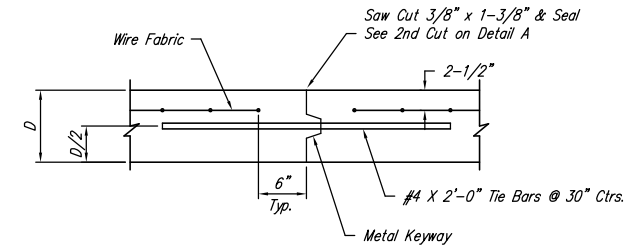


LONGITUDINAL JOINT DETAIL (L.J.)

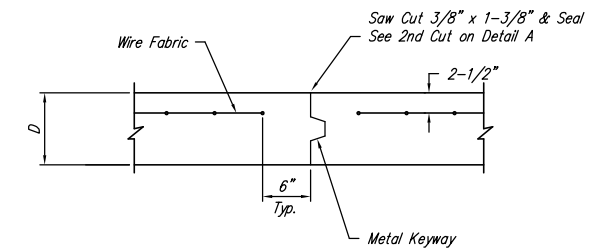


PLAN

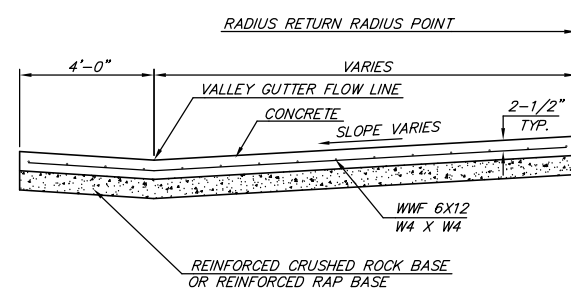
6" x 12" W4XW4 WIRE FABRIC REINFORCING SHALL BE PLACED SUCH THAT THE WIRES WITH THE 6" SPACING WILL RUN PARALLEL WITH THE LONGITUDINAL JOINT.



OPTIONAL LONGITUDINAL JOINT DETAIL (L.J.)

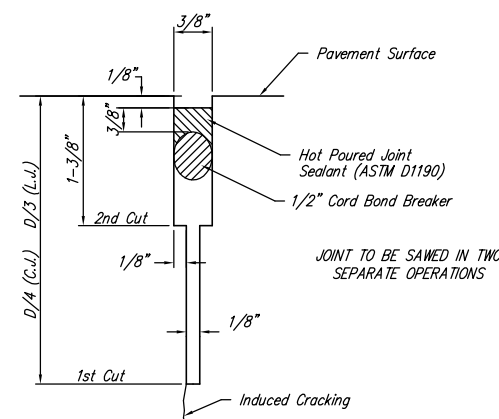


OPTIONAL CONTRACTION JOINT

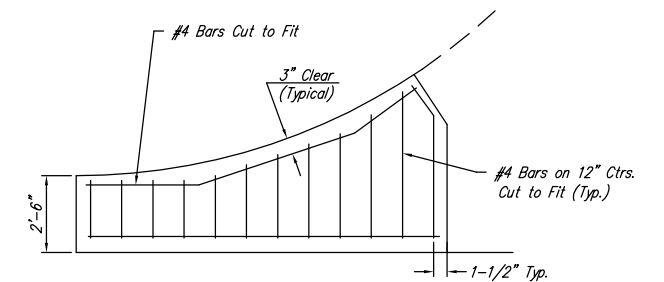


SECTION A-A

REINFORCED VALLEY GUTTER DETAIL




SAW JOINT DETAIL



WING REINFORCING DETAIL

J:\CIVIL\057533\DWG\PAV\057533ED2.DWG

 <p>THE CITY OF WICHITA</p>		<p>VALLEY GUTTER DETAILS</p>	
<p>CITY ENGINEER'S OFFICE CITY HALL - SEVENTH FLOOR 455 NORTH MAIN STREET WICHITA, KANSAS 67202 (316) 268-4501 (316) 268-4114 FAX</p>		<p>JIM ARMOUR, P.E. - CITY ENGINEER</p>	
<p>PROJECT NUMBER 472-84404</p>		<p>OCA NUMBER 766102</p>	
<p>DATE JUNE 06</p>		<p>SHEET 12 OF 25</p>	