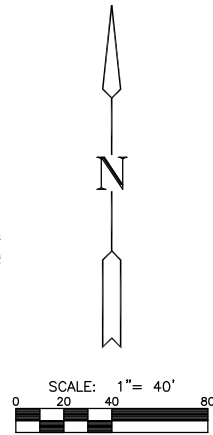
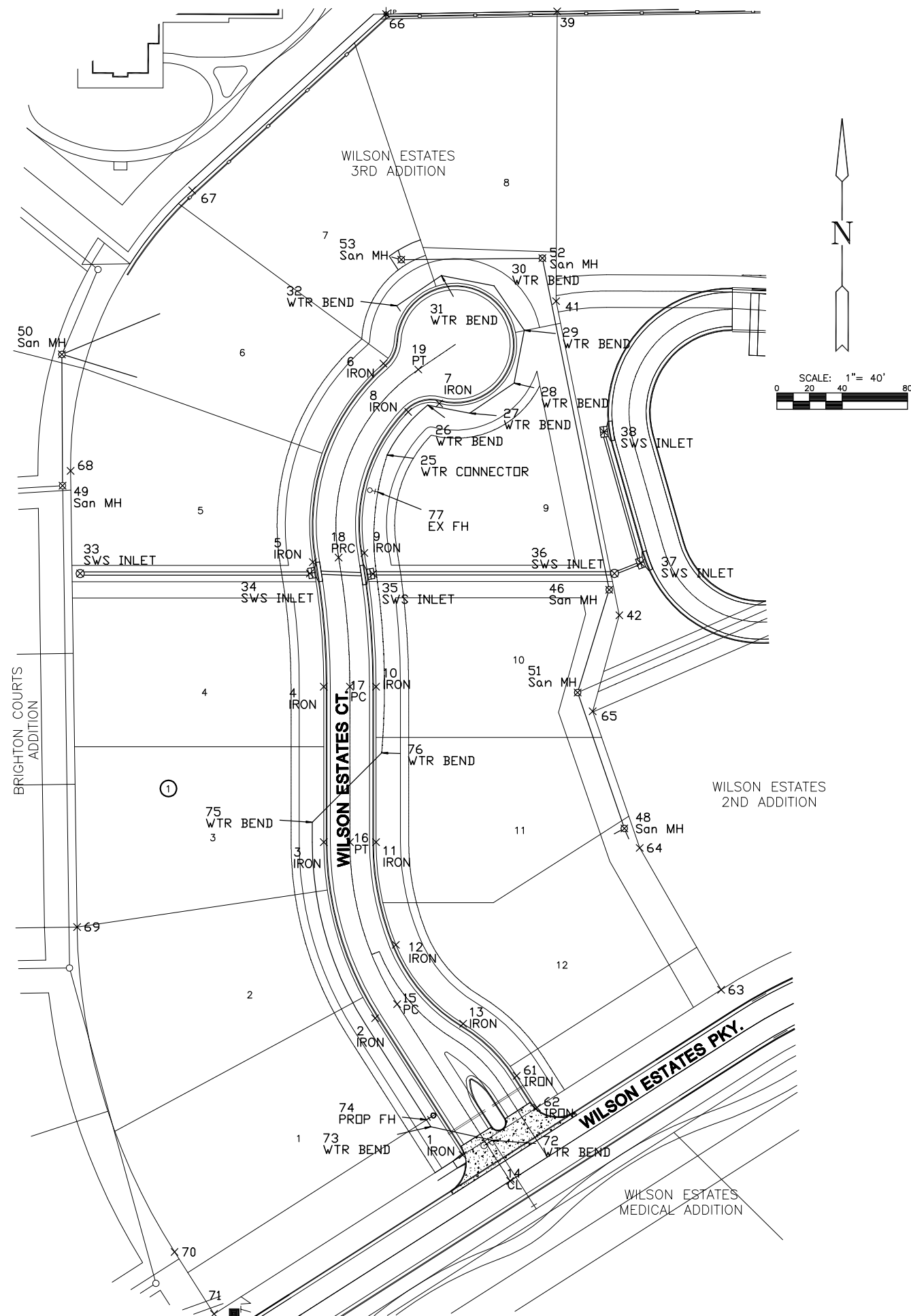


| Legacy Park @ Wilson Estates | | | |
|------------------------------|----------|----------|--------------|
| Points | Northing | Easting | Descriptions |
| Lot Irons | | | |
| 1 | 15735.13 | 17819.47 | IRONS |
| 2 | 15806.40 | 17774.57 | IRONS |
| 3 | 15872.10 | 17752.74 | IRONS |
| 4 | 15959.75 | 17750.59 | IRONS |
| 5 | 16060.82 | 17745.90 | IRONS |
| 6 | 16139.43 | 17749.60 | IRONS |
| 7 | 16197.60 | 17790.07 | IRONS |
| 8 | 16241.65 | 17819.34 | IRONS |
| 9 | 16213.49 | 17868.00 | IRONS |
| 10 | 16060.90 | 17778.21 | IRONS |
| 11 | 15901.35 | 17782.59 | IRONS |
| 12 | 15838.55 | 17794.77 | IRONS |
| 13 | 15764.09 | 17864.77 | IRONS |
| 39 | 16060.82 | 17596.54 | IRONS |
| 41 | 16219.04 | 17895.59 | IRONS |
| 42 | 16060.90 | 17927.43 | IRONS |
| 61 | 15764.09 | 17864.77 | IRONS |
| 62 | 15738.94 | 17881.13 | IRONS |
| 63 | 15811.01 | 17993.88 | IRONS |
| 64 | 15897.86 | 17944.03 | IRONS |
| 65 | 15981.49 | 17915.26 | IRONS |
| 66 | 16408.30 | 17788.71 | IRONS |
| 67 | 16300.38 | 17670.05 | IRONS |
| 68 | 16128.67 | 17595.57 | IRONS |
| 69 | 15849.46 | 17599.56 | IRONS |
| 70 | 15650.53 | 17659.25 | IRONS |
| 71 | 15612.61 | 17683.49 | IRONS |
| 14 | 15894.04 | 17864.73 | PC |
| 15 | 15802.25 | 17795.56 | CL |
| 16 | 15901.35 | 17766.59 | PT |
| 17 | 15996.58 | 17766.59 | PC |
| 18 | 16075.62 | 17759.72 | PRC |
| 19 | 16190.70 | 17808.53 | PT |
| Sanitary Structure | | | |
| 46 | 16055.90 | 17925.38 | SAN MH |
| 48 | 15909.79 | 17934.64 | SAN MH |
| 49 | 16119.61 | 17590.70 | SAN MH |
| 50 | 16199.98 | 17590.29 | SAN MH |
| 51 | 15992.98 | 17906.02 | SAN MH |
| 52 | 16258.82 | 17884.51 | SAN MH |
| 53 | 16261.08 | 17818.82 | SAN MH |
| Water Structure | | | |
| 25 | 16138.44 | 17789.40 | WTR BEND |
| 26 | 16168.89 | 17814.29 | WTR BEND |
| 27 | 16163.97 | 17839.91 | WTR BEND |
| 28 | 16182.43 | 17867.15 | WTR BEND |
| 29 | 16214.75 | 17873.36 | WTR BEND |
| 30 | 16242.00 | 17854.89 | WTR BEND |
| 31 | 16248.20 | 17822.57 | WTR BEND |
| 32 | 16229.74 | 17795.33 | WTR BEND |
| 72 | 15718.95 | 17853.79 | WTR BEND |
| 73 | 15727.22 | 17816.22 | WTR BEND |
| 74 | 15731.43 | 17813.53 | PROP. FH |
| 75 | 15913.54 | 17743.59 | WTR BEND |
| 76 | 15956.04 | 17786.09 | WTR BEND |
| 77 | 16115.73 | 17783.68 | EX. FH |
| Storm Sewer Structure | | | |
| 33 | 16065.82 | 17601.47 | SW S INLET |
| 34 | 16065.82 | 17742.11 | SW S INLET |
| 35 | 16065.63 | 17780.71 | SW S INLET |
| 36 | 16065.90 | 17928.61 | SW S INLET |
| 37 | 16072.24 | 17944.60 | SW S INLET |
| 38 | 16152.54 | 17922.23 | SW S INLET |



MKEC
ENGINEERING
CONSULTANTS, INC.
411 N. WEBB ROAD
WICHITA, KS. 67206
316 - 684 - 9600

**PUBLIC IMPROVEMENT PLANS FOR
LEGACY PARK
WILSON ESTATES 3RD ADD.
WICHITA, KANSAS**

**BUBBLE
MAP**
SHEET TITLE
PROJECT NUMBER
05753

DESIGN BY
DRAWN BY
CHECKED BY
SRS
KWS
GJA

ISSUED
REVISIONS
JUNE 2006

SHEET NO.
24 of 25

PLOTTED: Tuesday, June 27, 2006 @ 02:13PM

J:\Civil\05753\Draw\SAN\05753B.M