

# BUREAU OF PUBLIC SERVICES

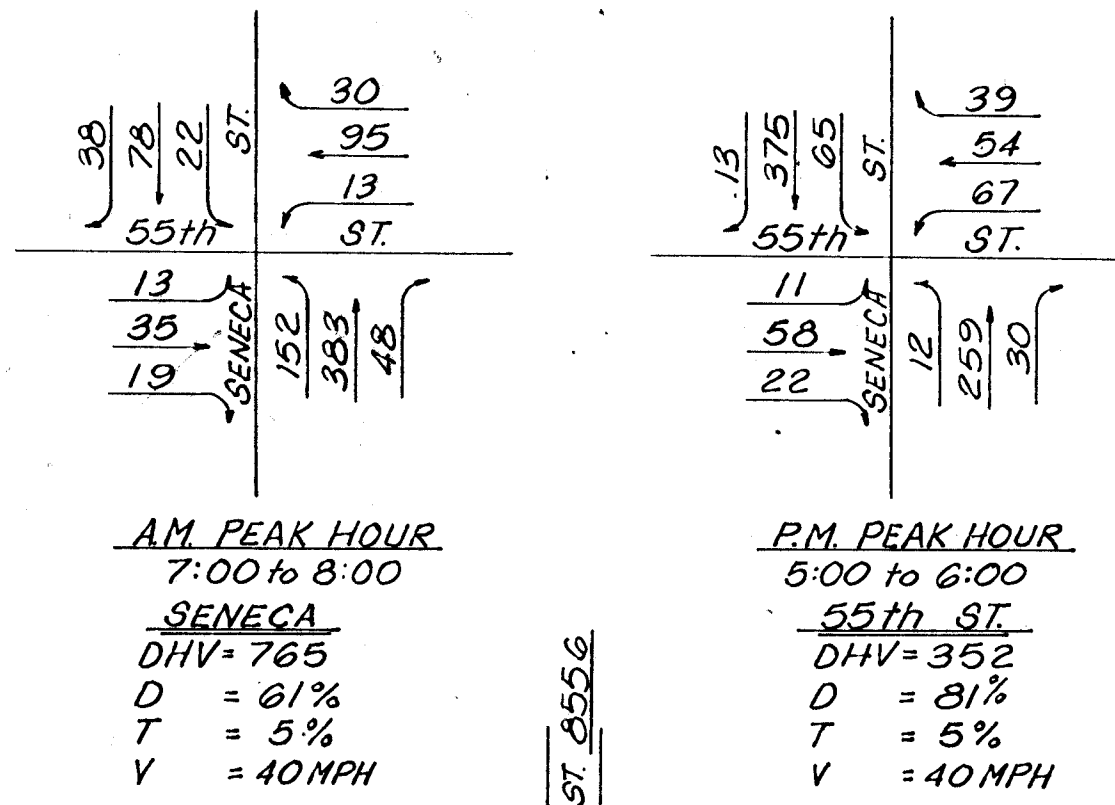


R.C.B. BRIDGES  
R.C.B. CULVERTS  
R.C.B. LEVEE BREACH STRUCTURE  
GRADING  
SURFACING  
SEEDING  
DRAINAGE

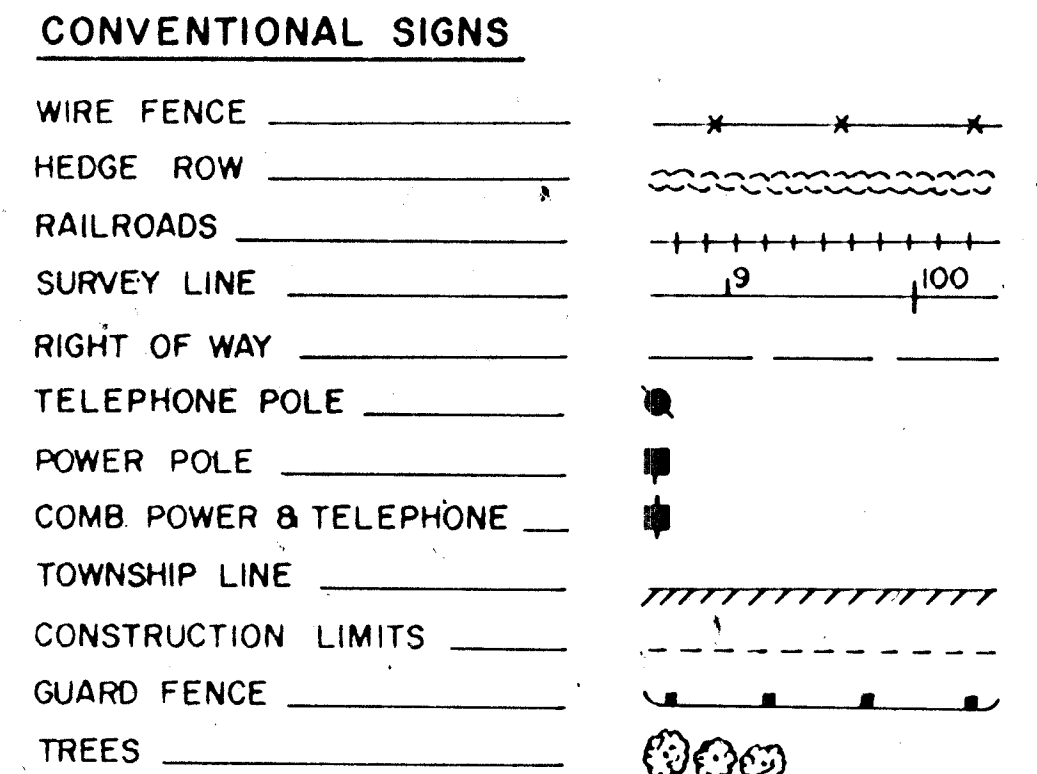
**INDEX**

1	Title Sheet
2	Typical Section
3-24	Plan & Profile (Seneca Ave.)
25-28	Plan & Profile (Gunzelman Drain)
29	Concrete Manhole Details
30	Reinforced Concrete Manhole
31	Manhole (Special)
32	Manhole (Special Inlet)/Low Water Crossing
33	Type 22 Curb Inlet
34	Schedule Inlets and Manholes
35-37	Reinforcing Steel for Inlets and Manholes
38	Curb and Gutter and Combined Curb and Gutter
39	Concrete Alley and Entrance Pavement
40	Auxiliary Details
41	Concrete End Sections
42-47	Levee Breach Structure Details
48	Structure No. 634-25-4680 (63rd St. South)
49-50	Structure No. 819-W-792 (RCB Extension Sta 87+75 Seneca Ave.)
51	Structure No. 633 1/2-26-300 (61st St. South)
52	Structure No. 633 1/8-26-325 (60th St. South)
53	Structure No. 633-26-300 (59th St. South)
54	Structure No. 632 5/8-26-300 (58th St. South)
55	Structure No. 819-W-4430 (Sta 124+50 Seneca Ave.)
56	Corral Rail Details
57-64	Structure and Bridge Project Markers
65	Supports and Spacers for Reinforcing Steel
66	Bridge Excavation
67	Summary of Quantities (Bridge & Road)
68	Summary of Quantities (Surfacing)
69	Erosion Control - Seeding
70	Installation Detail - Erosion Control
71-78	Traffic Control Details
79-92	Cross-Sections

**TRAFFIC DIAGRAMS**



**CONVENTIONAL SIGNS**



Sta. 56+76.58 END  
Gunzelman Drain  
Improvement

Sta. 87+75 EXTEND Exist.  
2-10'x5'x51.5' R.C.B. Bridge  
14'-1" Lt. and 14'-5" Rt.  
(Br. No. 819-W-792)(Seneca St.)

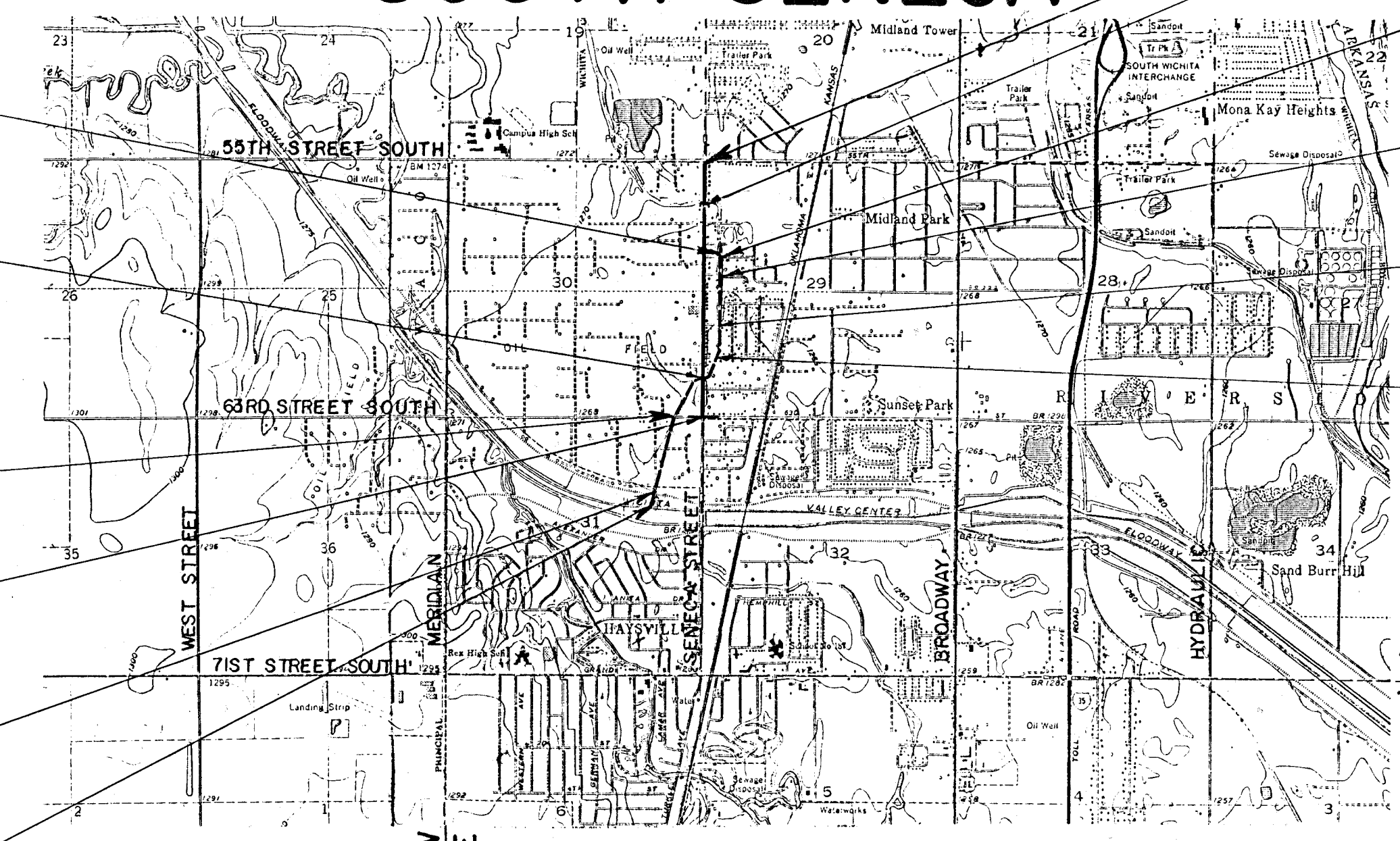
Sta. 20+33.50 CONSTRUCT  
2-12'x5'x80' R.C.B. Bridge  
(Br. No. 634-25-4680)(63RD ST.)

Sta. 80+03.94 BEGIN  
Project 819-W

CONSTRUCT 4-7'-5"x6'x115'  
RCB. Levee Breach Structure w/  
Sluice Gates and Automatic  
Flap Gates

Sta. 1+00 BEGIN  
Gunzelman Drain  
Improvement

## SOUTH SENECA



Sta. 132+68.00 END  
Project 819-W

Sta. 124+50 CONSTRUCT  
3-8'x3'x49'-0" R.C.B. Bridge  
(Br. No. 819-W-4430)(Seneca Street)

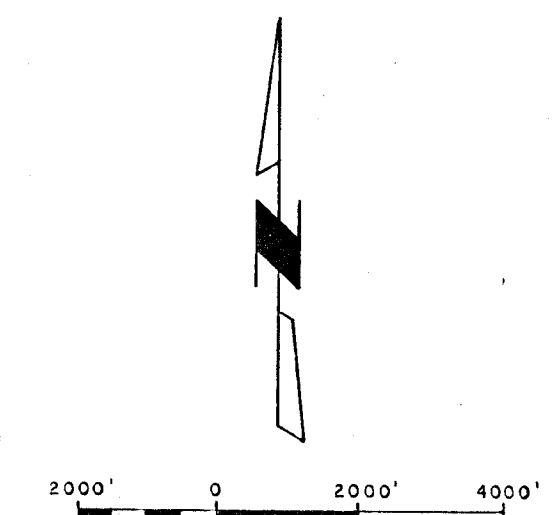
Sta. 56+57.58 CONSTRUCT  
2-9'x6'x38' R.C.B. Culvert w/Soil Saver  
(Br. No. 632 5/8-26-300)(58TH Street)

Sta. 52+10.06 CONSTRUCT  
2-9'x4'x38' R.C.B. Culvert  
(Br. No. 633-26-300)(59TH Street)

Sta. 42+43.97 CONSTRUCT  
2-10'x4'x38' R.C.B. Bridge  
(Br. No. 633 1/8-26-325)(60TH Street)

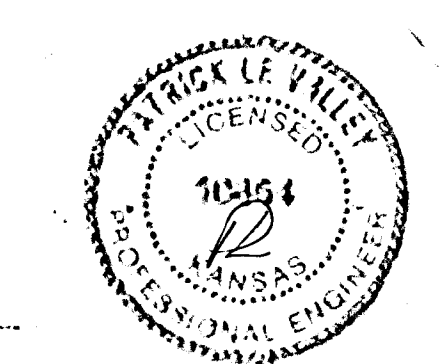
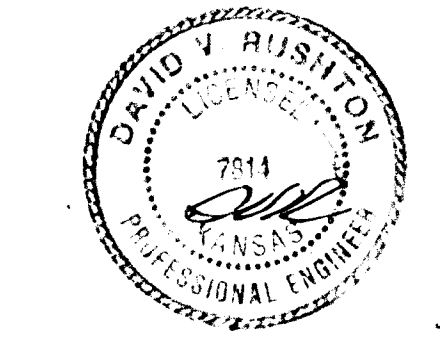
Sta. 35+64.65 CONSTRUCT  
2-10'x4'x38' R.C.B. Bridge  
(Br. No. 633 1/2-26-300)(61ST Street)

NOTE: PROJECT SHALL BE OPEN FOR THRU TRAFFIC THROUGHOUT CONSTRUCTION (SEE TRAFFIC CONTROL SHEETS FOR EXCEPTION) MATERIALS, EQUIPMENT, AND CONSTRUCTION UNDER THIS PROJECT SHALL CONFORM TO THE STANDARD SPECIFICATIONS FOR STATE ROAD AND BRIDGE CONSTRUCTION, KANSAS DEPARTMENT OF TRANSPORTATION, 1980 EDITION.



PLANS PREPARED BY:  
SEDGWICK COUNTY BUREAU OF PUBLIC SERVICES  
HIGHWAY DIVISION  
WICHITA, KANSAS  
DATE: MARCH 21, 1988

SOUTH SENECA STREET	NET LENGTH OF PROJECT	5,264.06	FT.	0.997	MILES
	NET LENGTH OF BRIDGES	48.33	FT.	0.009	MILES
GUNZELMAN DRAIN IMPROVEMENTS	NET LENGTH OF ROAD	5,264.06	FT.	0.997	MILES
	ADDITIONS (SIDEROADS)	1,394.00	FT.	0.264	MILES
SOUTH SENECA STREET	GROSS LENGTH OF PROJECT	6,658.06	FT.	1.261	MILES
	NET LENGTH OF PROJECT	5,375.27	FT.	1.018	MILES
	NET LENGTH OF STRUCTURES	434.00	FT.	0.082	MILES
GUNZELMAN DRAIN IMPROVEMENTS	GROSS LENGTH OF PROJECT	5,809.27	FT.	1.100	MILES



APPROVED:  
*David C. Spears*  
COUNTY ENGINEER / DIRECTOR OF PUBLIC SERVICES  
DATE: 3/18/88

APPROVED: DATE:  
*W. Mark F. Schuch* 3/18/88  
CHAIRMAN  
BOARD OF COUNTY COMMISSIONERS

FILED:  
FILED IN THE OFFICE OF  
THE SEDGWICK COUNTY CLERK  
*Ann Wright* 3/18/88  
COUNTY CLERK DATE: