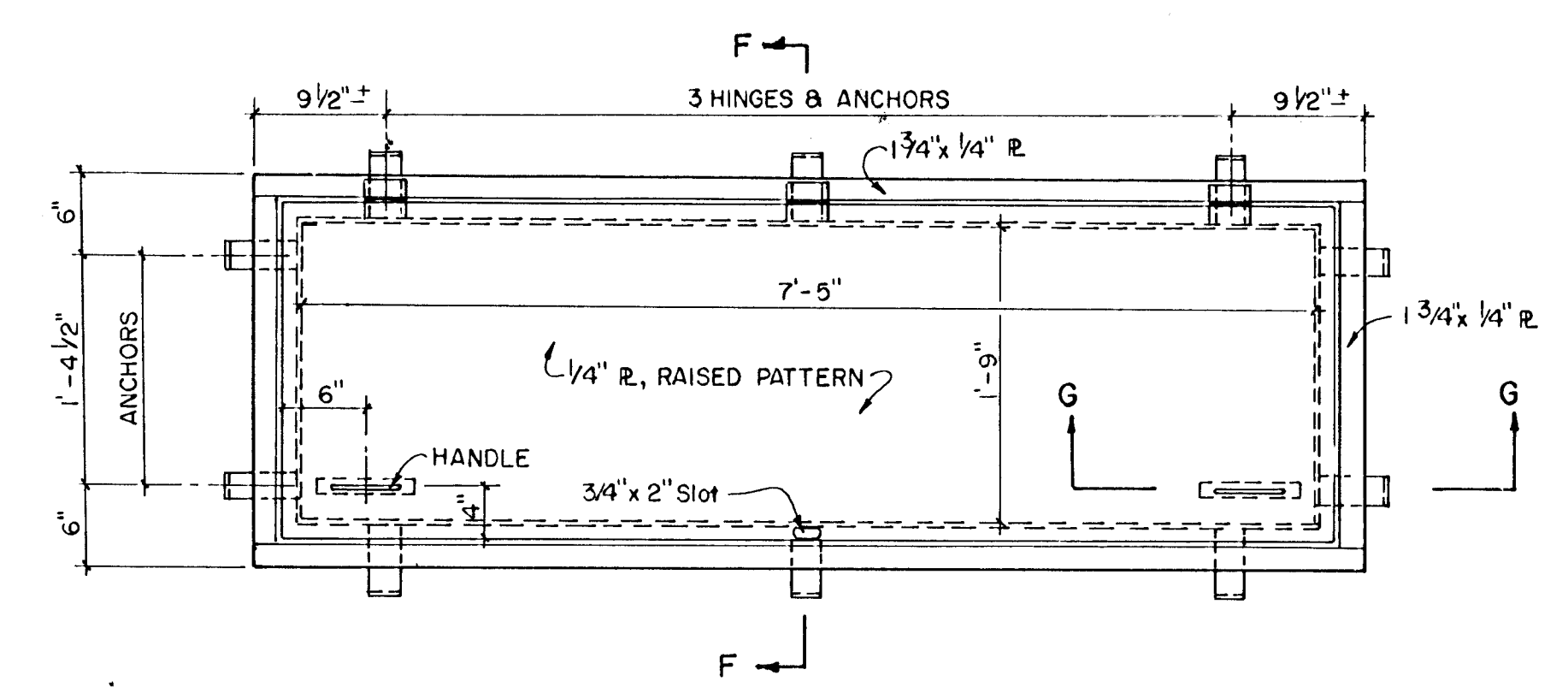
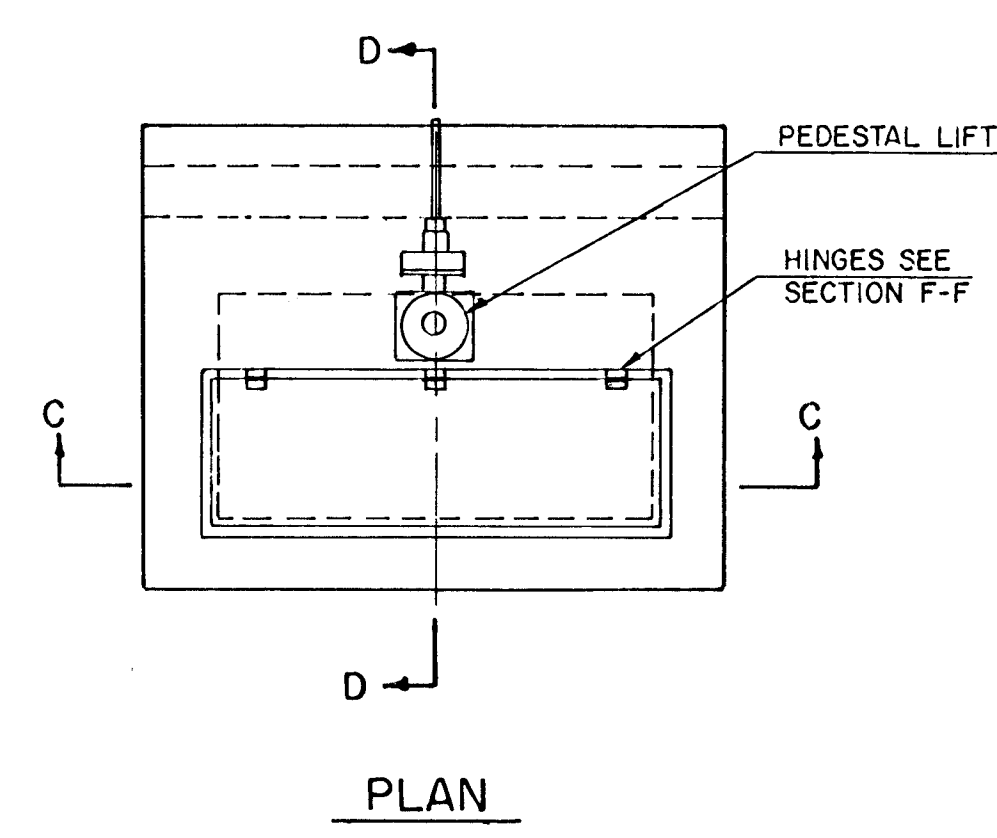


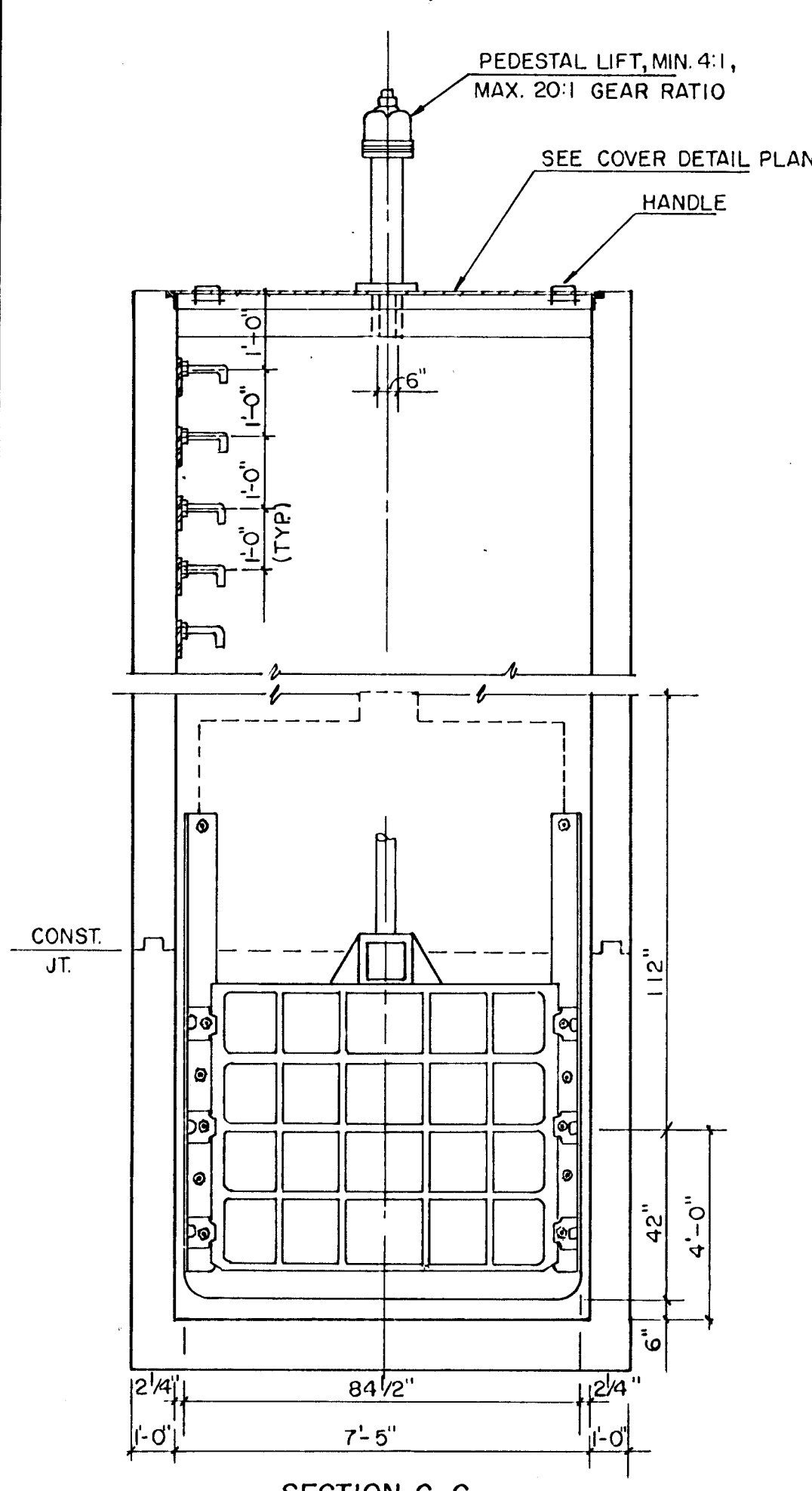
COUNTY	STATE	PROJECT NUMBER	FISCAL YEAR	SHEET NO.	TOTAL SHEETS
SEDGWICK	KANSAS	819-W	1988	46	92



COVER DETAIL PLAN

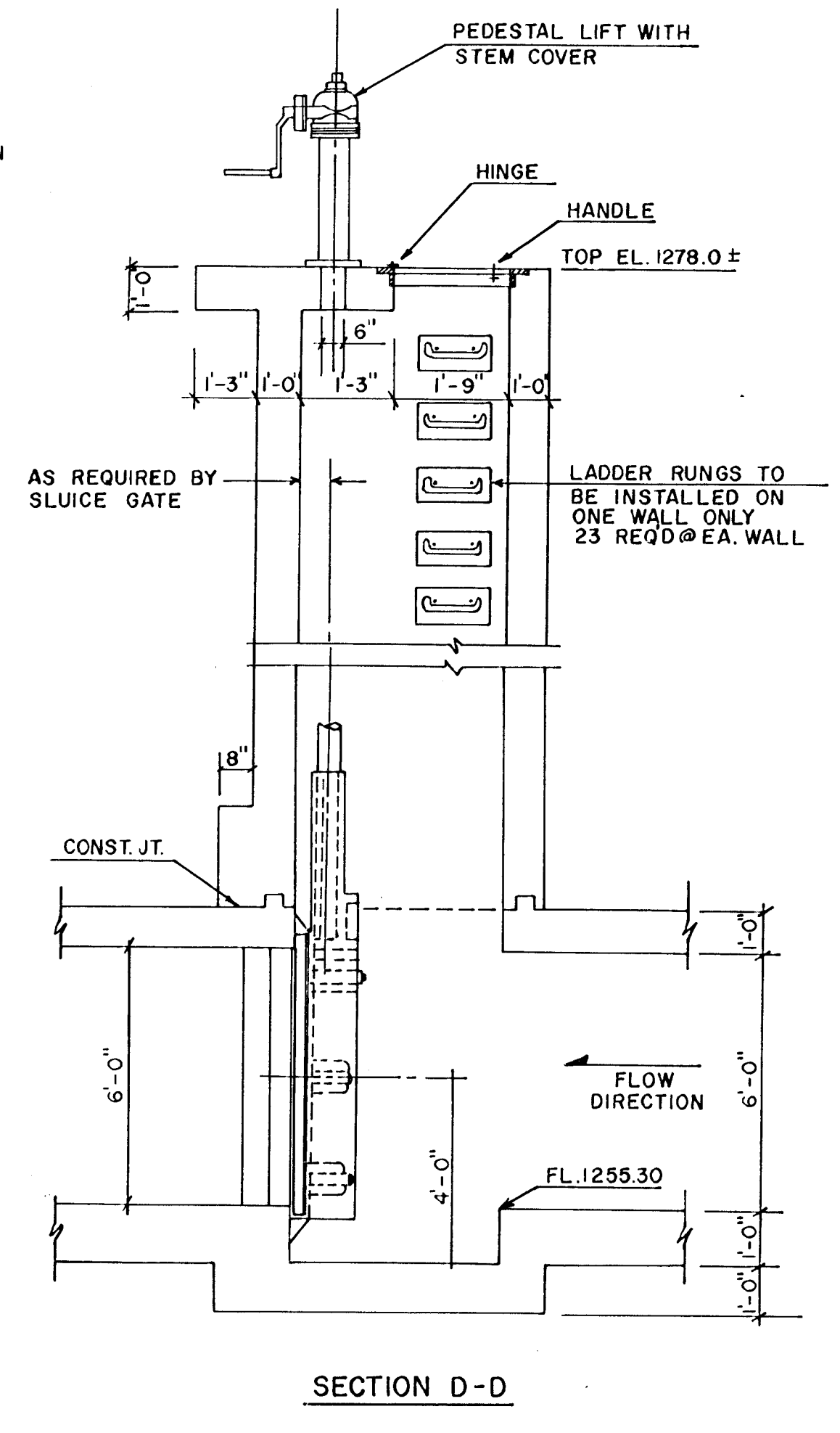


PLAN

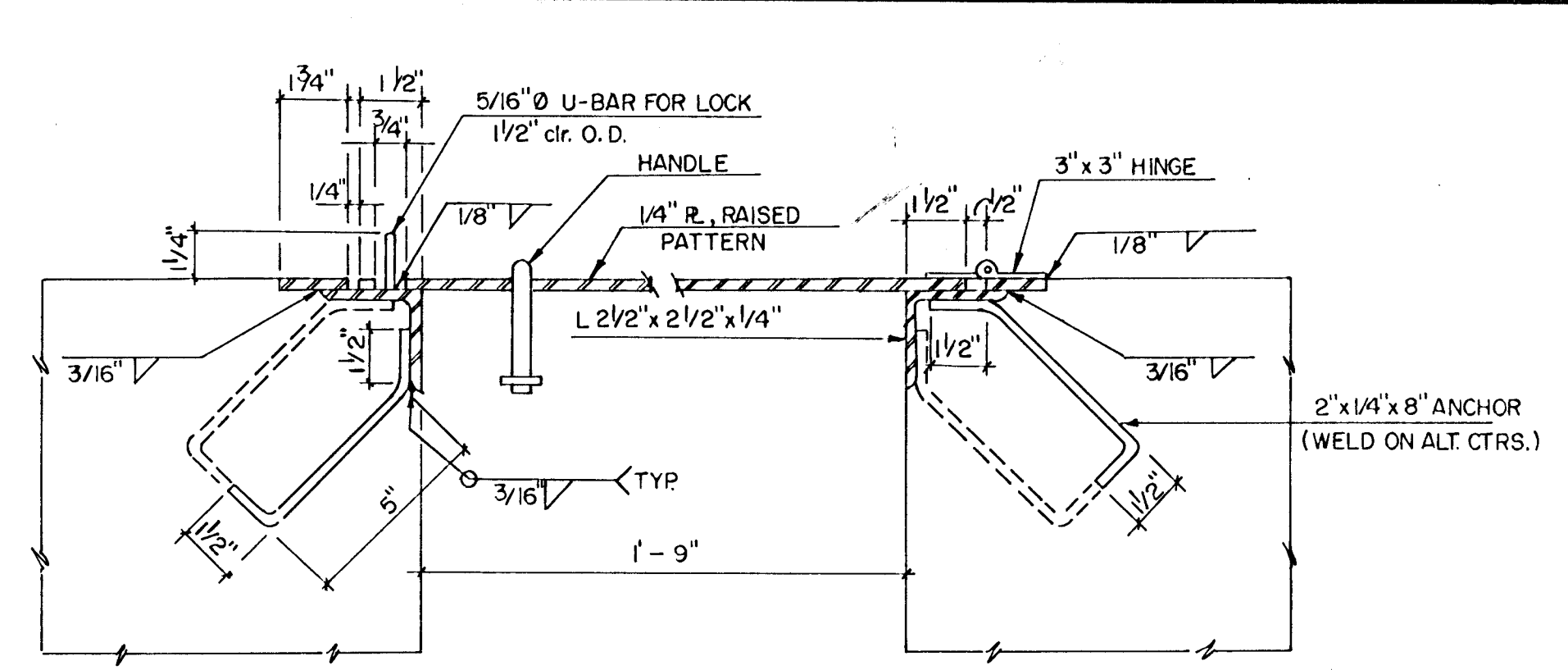


SECTION C-C

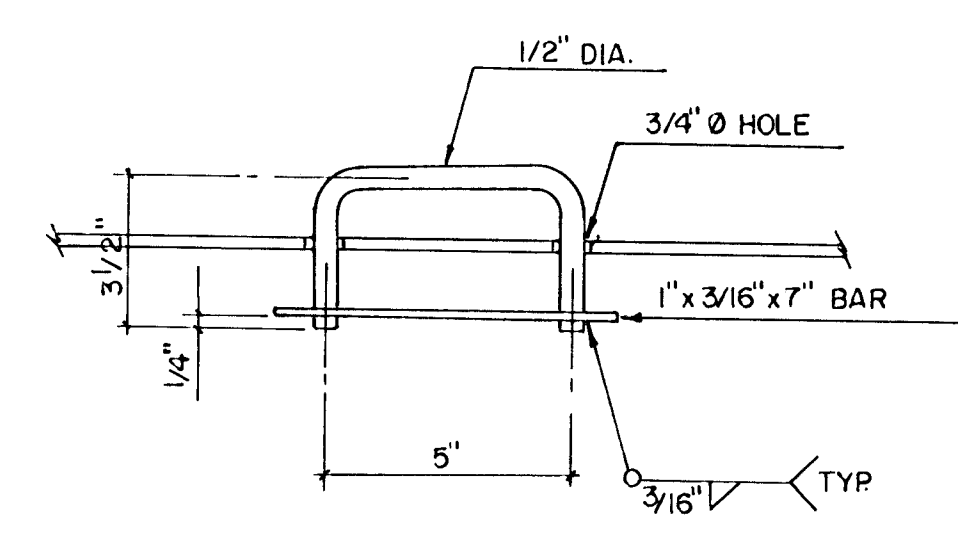
SLUICE GATE & MANHOLE DETAILS
(SEE SLUICE GATE MODEL 50-10 HYDRO GATE 72x72)



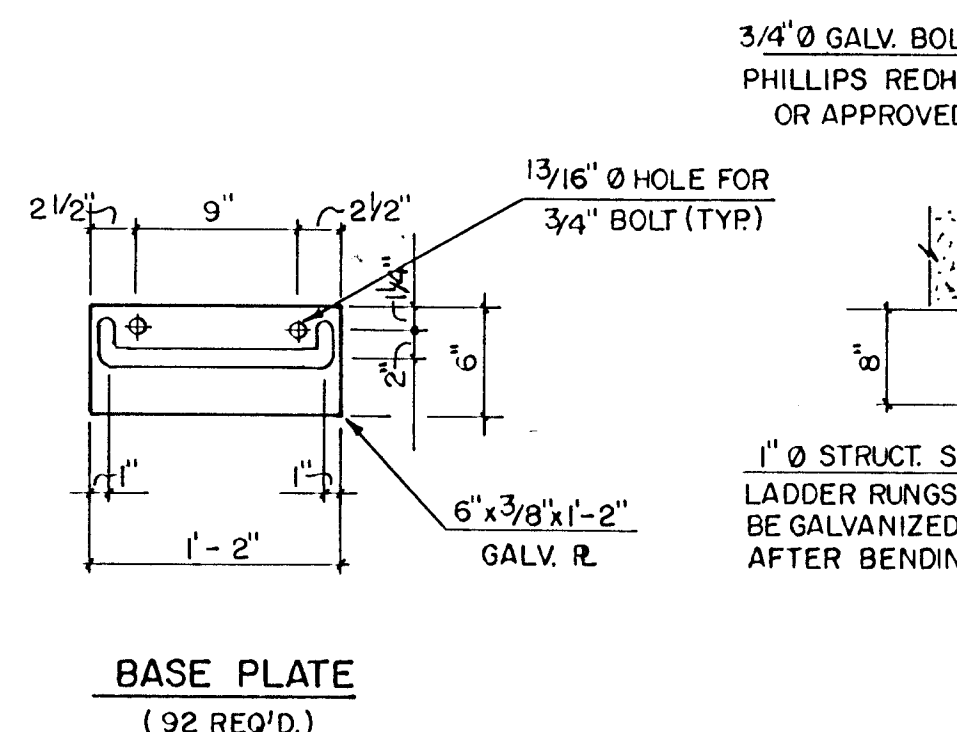
SECTION D-D



SECTION F-F

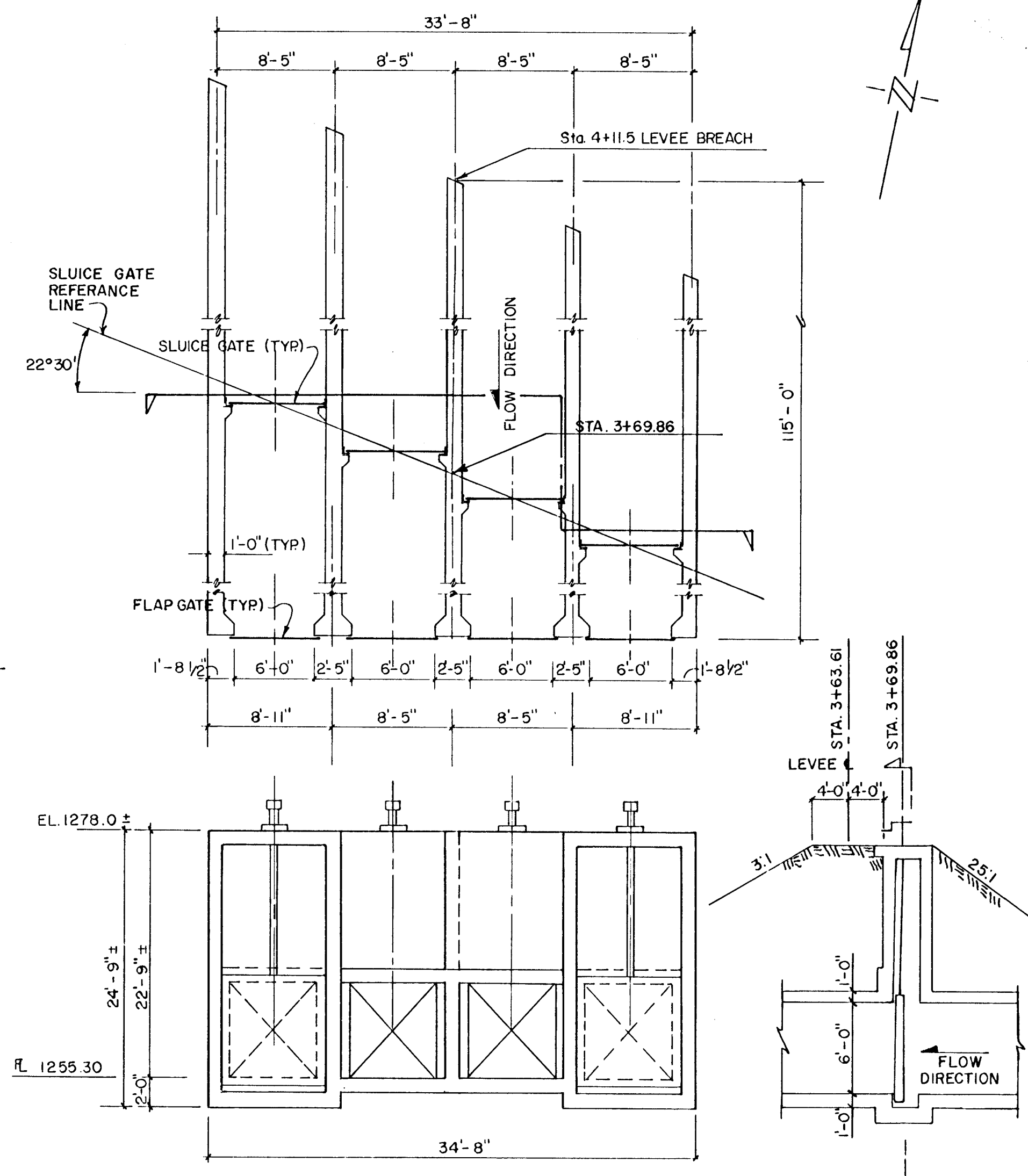


SECTION G-G

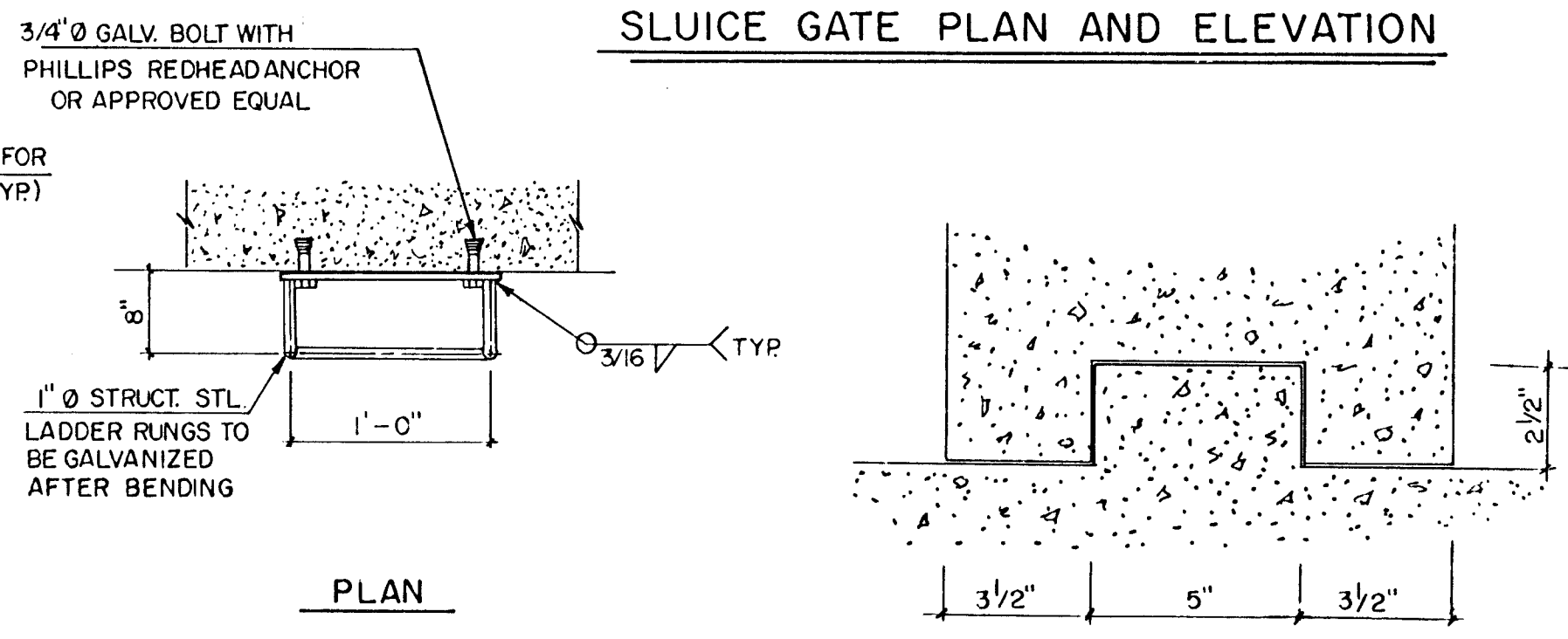


BASE PLATE
(92 REQ'D.)

LADDER RUNG DETAILS



SLUICE GATE PLAN AND ELEVATION



TYPICAL CONSTRUCTION JOINT

GENERAL NOTES

1. CONCRETE: ALL CONCRETE SHALL BE CLASS A CONCRETE (AE). BEVEL ALL EXPOSED EDGES WITH A 3/4" TRIANGULAR MOLDING OR FINISH WITH AN APPROVED EDGING TOOL. CONCRETE SHALL HAVE A MINIMUM OF 28 DAY COMPRESSIVE STRENGTH OF 3,000 P.S.I.
 2. REINFORCING STEEL: ALL DIMENSIONS RELATIVE TO REINFORCING STEEL ARE TO CENTERLINE OF BAR UNLESS OTHERWISE NOTED. ALL REINFORCING STEEL SHALL CONFORM TO A.S.T.M. A615 GR. 60.
 3. FLAP GATE: A MEDIUM DUTY FLAT BACK FLAP GATE (DESIGNED FOR A 20' HEAD) SHALL BE PROVIDED ALONG WITH WALL THIMBLE. THE FLAP GATE SHALL BE PAINTED WITH ONE COAT OF ZINC DUST PAINT FOLLOWED BY TWO COATS OF ALUMINUM PAINT.
 4. SLIDE GATE AND LIFT: THE SLIDE GATE SHALL BE INSTALLED IN THE SLUICE GATE WELL AS SHOWN. HYDRO GATE MODEL 50-10 FLAT BACK SLIDE GATE WITH WALL THIMBLE SHALL BE USED. THE LIFT SHALL BE HYDRO GATE MODEL CPE-20 WITH 2 1/2" DIAMETER STEM, STEM GUIDE AND STEM COVERS. DIMENSIONS AND DETAILS FOR THE SLIDE GATE AND WALL THIMBLE SHALL BE OBTAINED FROM CERTIFIED INSTALLATION DRAWINGS FURNISHED BY THE VENDOR. OTHER APPROVED SLIDE GATES AND LIFTS MAY BE USED IN LIEU OF THE HYDRO GATE PRODUCTS LISTED.
 5. STEEL COVER AND FRAME: THE PLATE FOR THE MANHOLE COVER SHALL BE 1/4" U.S.S. MULTI-GRIP CARBON STEEL PLATE OR APPROVED EQUAL. ALL OTHER PARTS SHALL BE STRUCTURAL STEEL, A.S.T.M. A-36. ALL STEEL SHALL BE GALVANIZED AFTER FABRICATION.
 6. SEE SHEET #17 FOR BAR LIST AND BENDING DIAGRAMS AND SUMMARY OF QUANTITIES (FOR INFORMATION ONLY).
- * NOTE: STEM TO BE STAINLESS STEEL ONLY.

SOUTH SENECA STREET
**SLUICE GATE WITH
MANHOLE DETAILS**
LEVEE BREACH STRUCTURE

PREPARED BY
SEDGWICK COUNTY BUREAU OF PUBLIC SERVICES
HIGHWAY DIVISION

REVISED	SCALE	DESIGNED	TRACED	CHECKED	SHEET NO.
	NONE	S.H.H.	R.E.F.	D.V.R.	46
	DATE	8-87	8-87	3-88	
	PLAINFILE	TOTAL SHEETS 92			