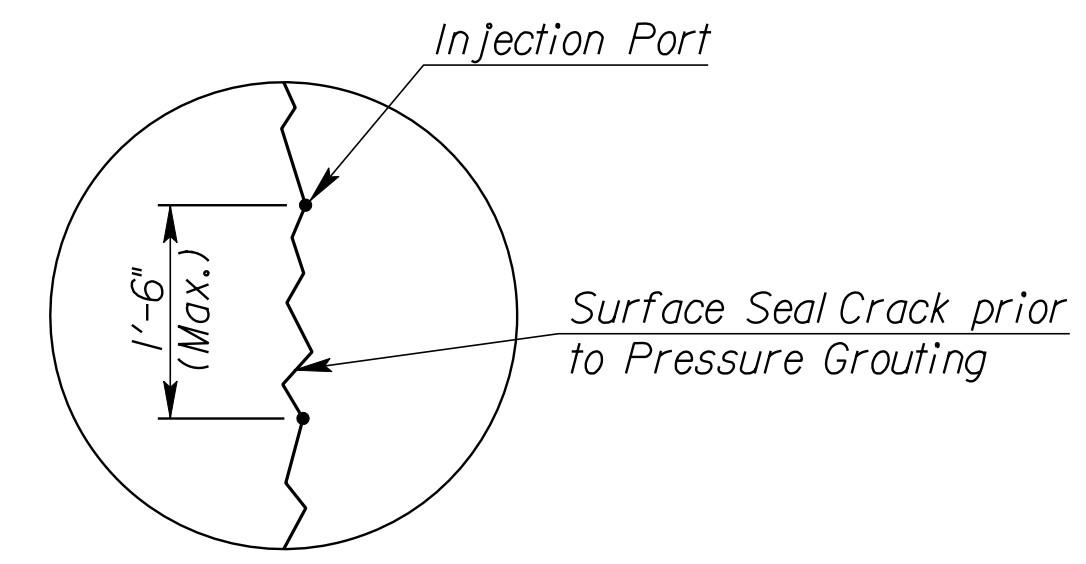
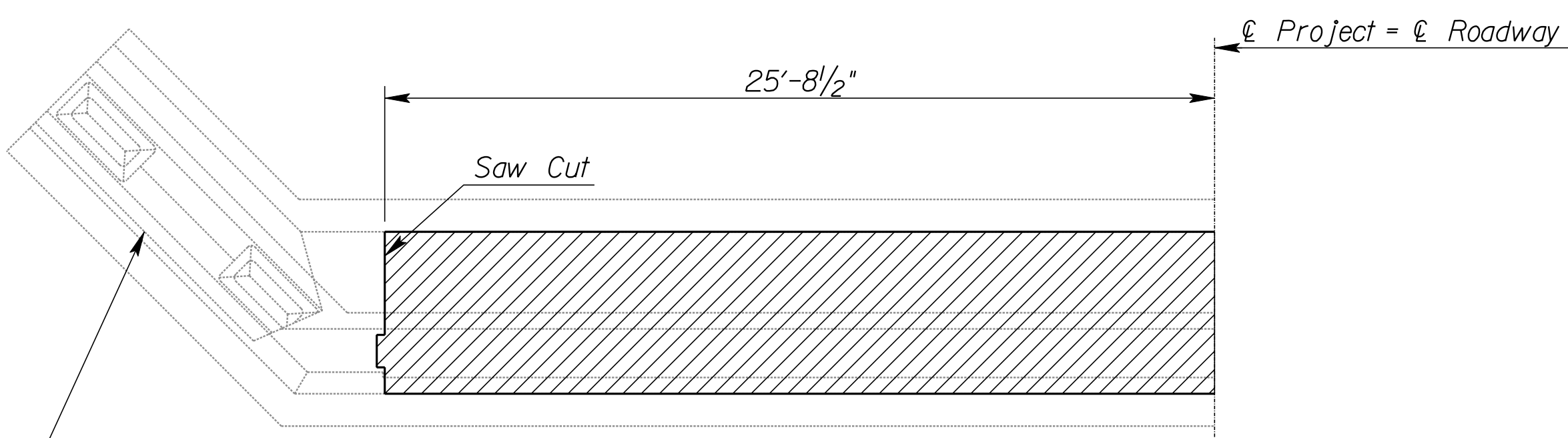


STATE	PROJECT NO.	YEAR	SHEET NO.	TOTAL SHEETS
KANSAS	TE-0284-01	2007	14	47



TYPICAL CRACK REPAIR DETAIL

NOTE:  
All cracks shall be repaired with an approved epoxy resin pressure grout as indicated on the Plans or as directed by the Engineer.  
All deteriorated concrete in the vicinity of the crack shall be removed prior to repair.

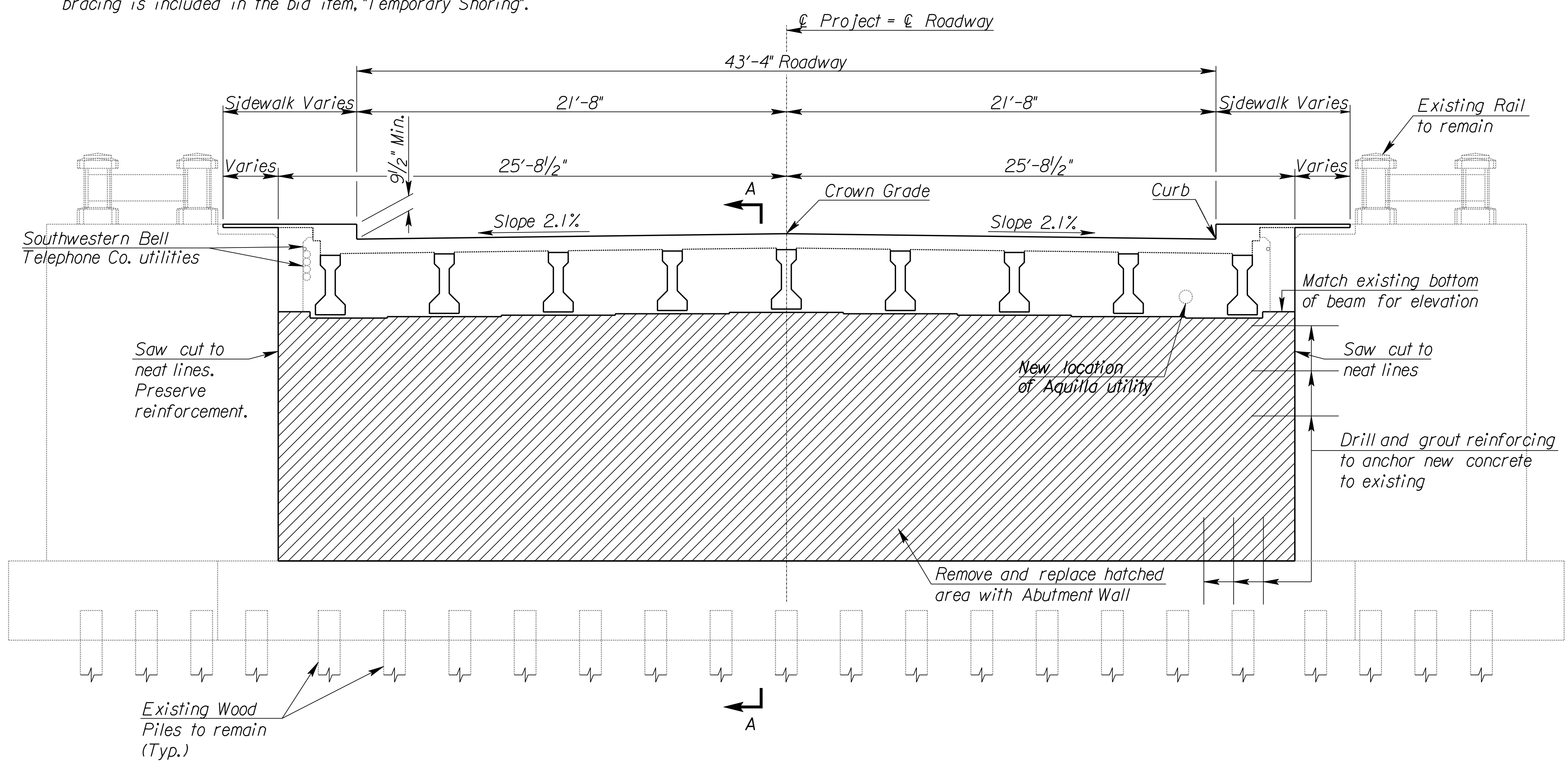


Abutment Wingwall can be expected to move/rotate when its connection to the abutment wall is removed. Contractor shall temporarily brace wall to prevent such movement. Temporary bracing to be designed by a licensed Professional Engineer registered in the State of Kansas. All work for this temporary bracing is included in the bid item, "Temporary Shoring".

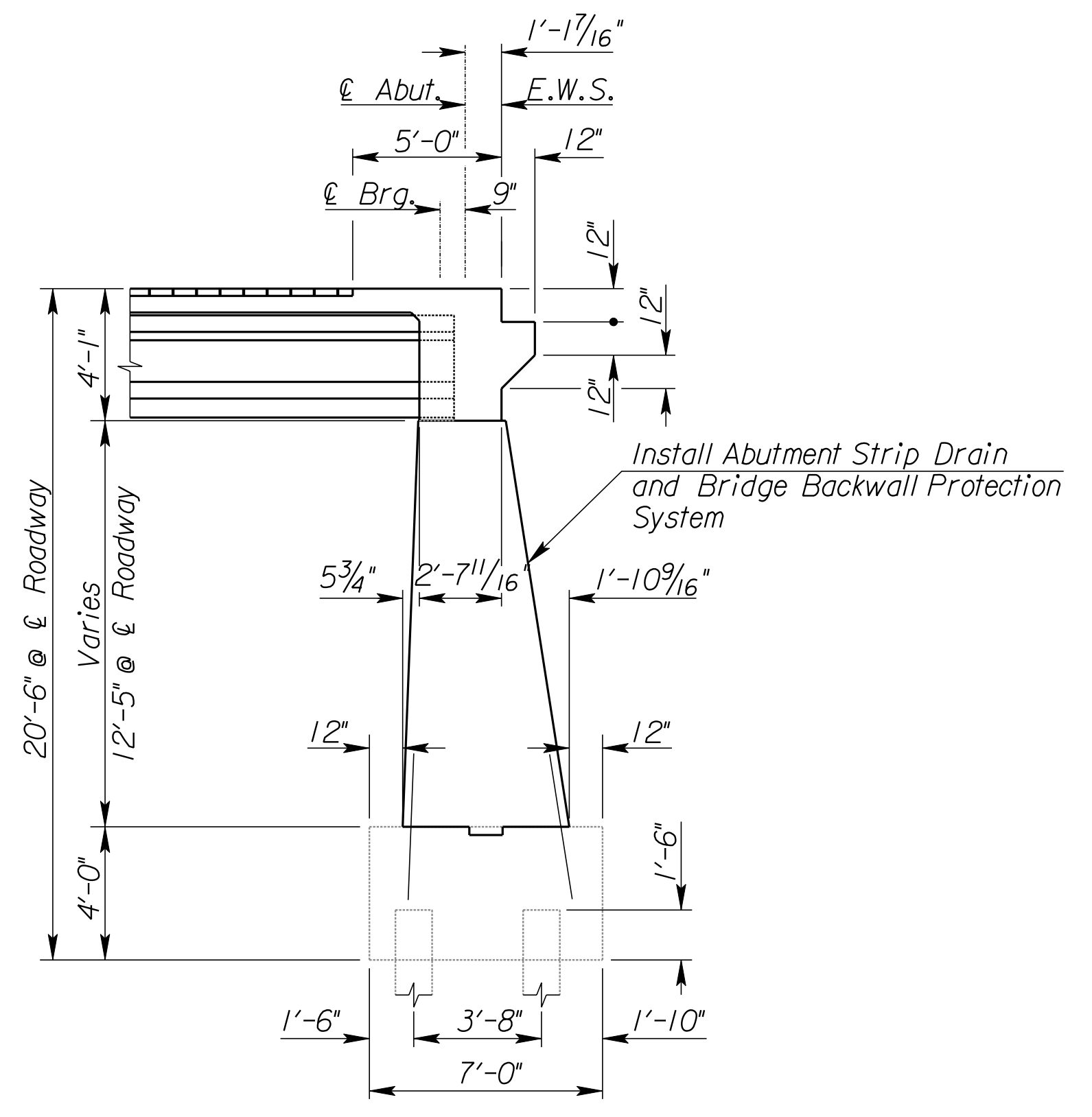
NOTE:  
Abutment pile cap to remain in place. Repair cracks as required and as directed by the Engineer.

PLAN

NOTE:  
℄ Bearing does not equal ℄ Abutment.



ABUTMENT  
(Looking West @ Abut. #1,  
Looking East @ Abut. #2)



SECTION A-A

See "Abutment Wall Reinforcing Details" for Abutment reinforcing.

See Sh. #15 for Abutment Wall Reinforcing Details.

CITY OF WICHITA  
JAMES ARMOUR, P.E., CITY ENGINEER  
13TH STREET BRIDGE OVER  
LITTLE ARKANSAS RIVER  
**ABUTMENT DETAILS**



SCALE	DATE 10/9/2007	DWG NO. 35750A
-------	----------------	----------------

K:\35750A\CADD\SHEETS\BRIDGE\13THABUTDET01.dgn  
SURV. JG, CP PLOT CADD DES. GBI TR. BS APP. CKD. RG