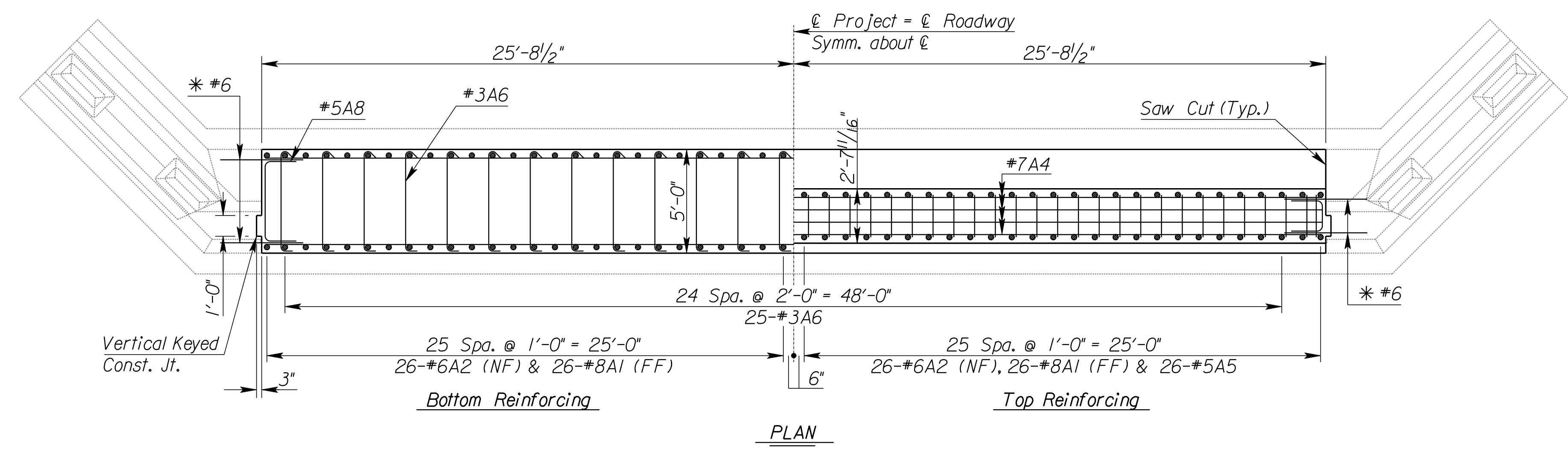
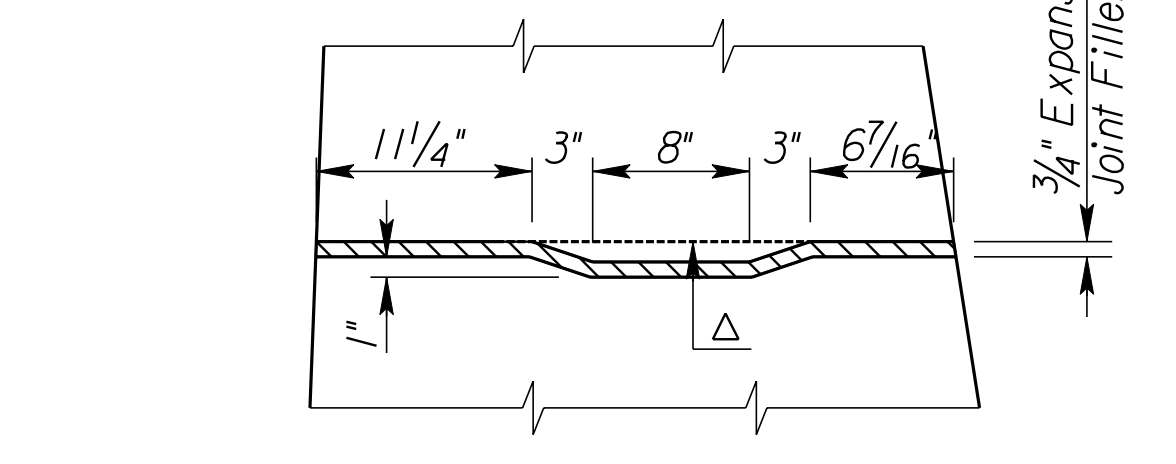


STATE	PROJECT NO.	YEAR	SHEET NO.	TOTAL SHEETS
KANSAS	TE-0284-01	2007	15	47

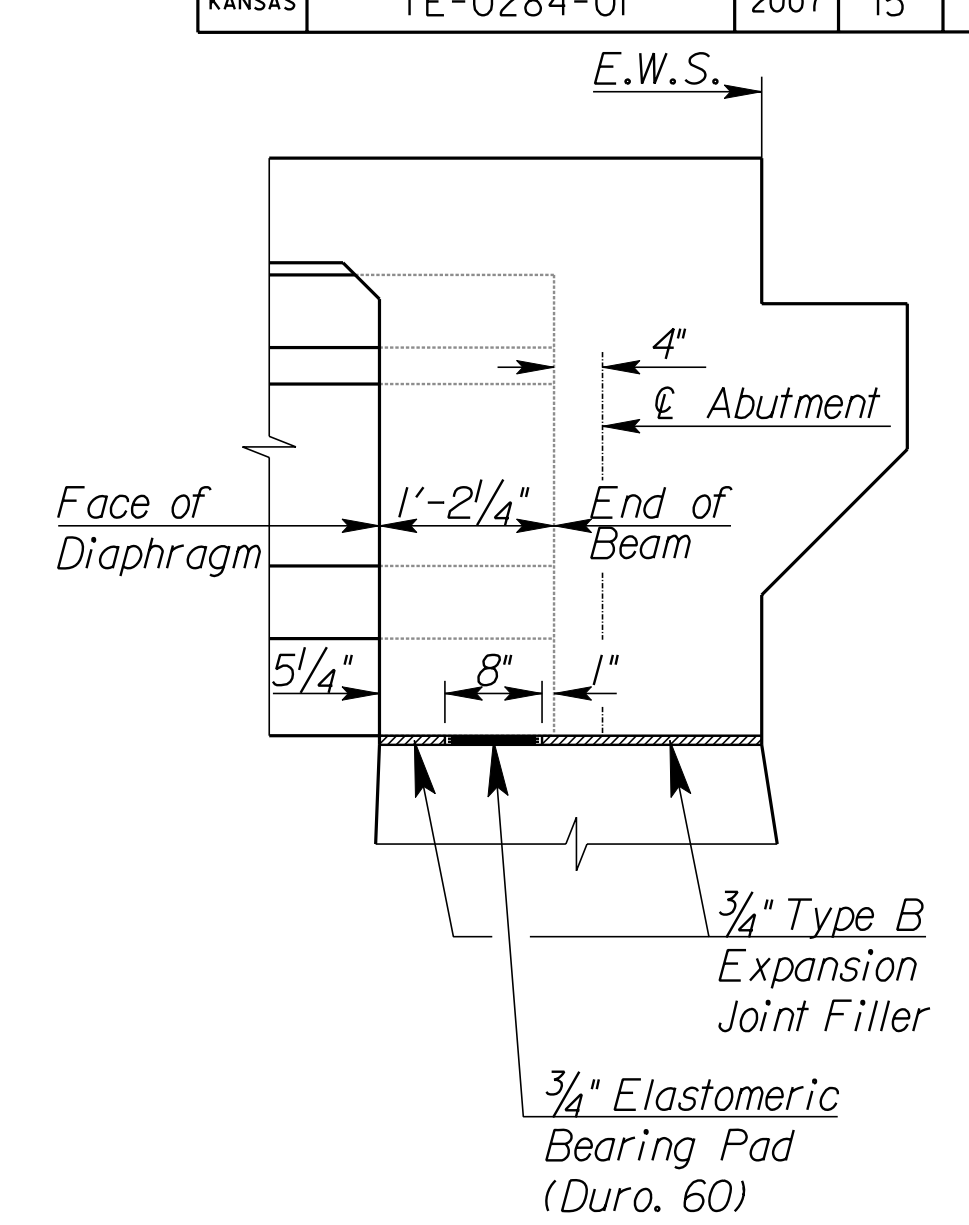


PLAN



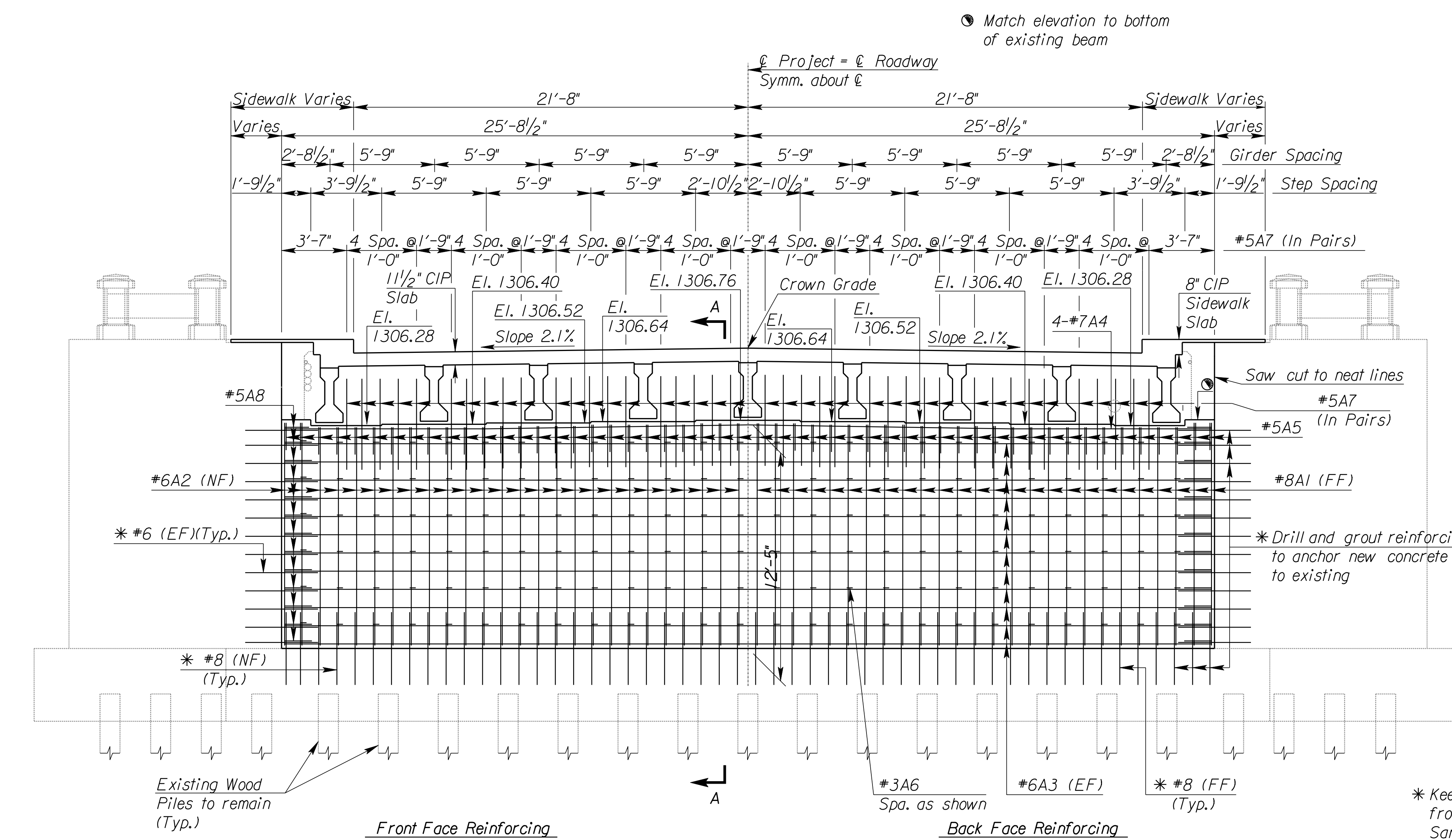
HORIZONTAL KEYED CONSTRUCTION JOINT DETAIL

Section @ \bar{C} Roadway
 Provide a flat base without a keyed construction joint under the proposed girders



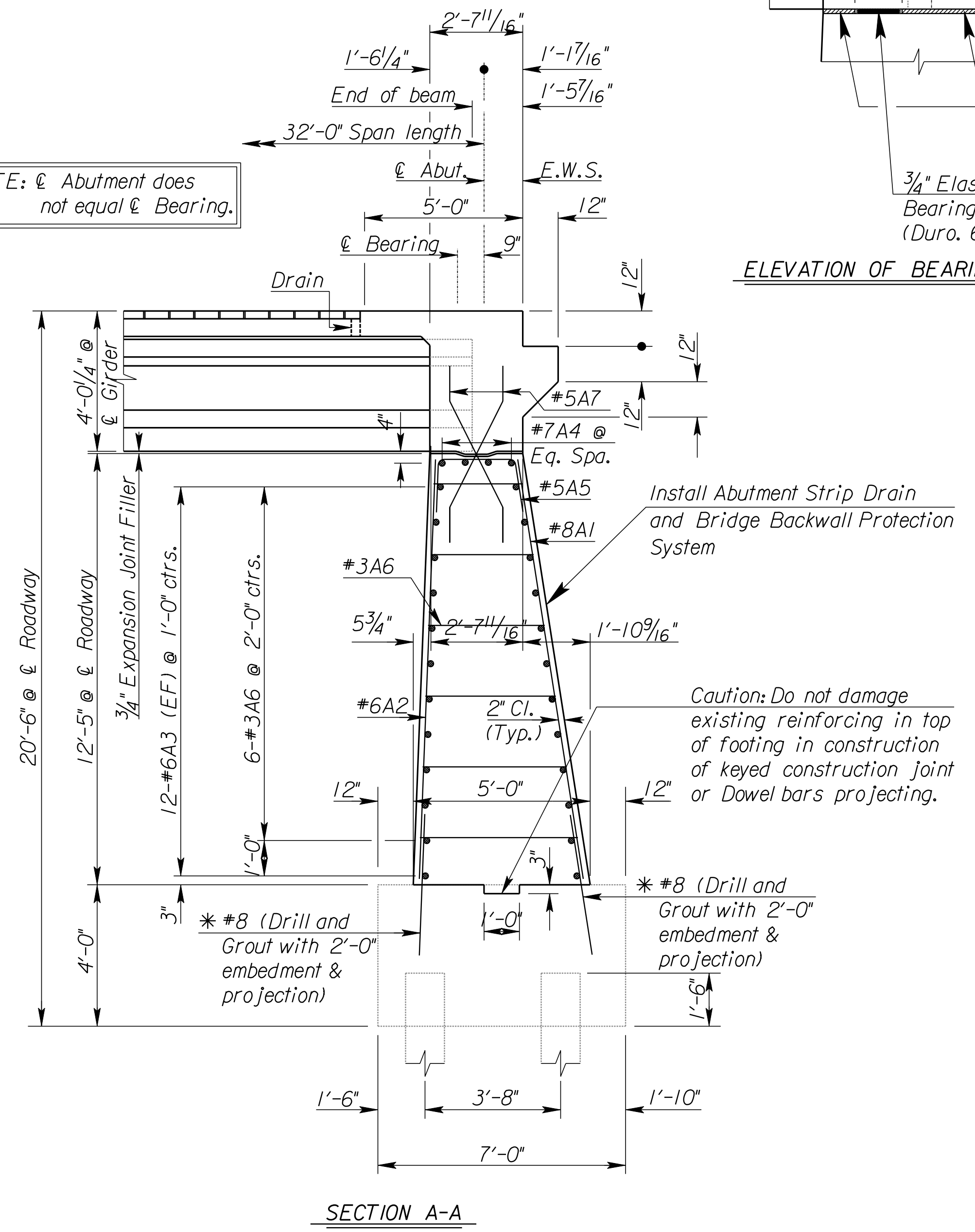
ELEVATION OF BEARING PAD

NOTE: \bar{C} Abutment does not equal \bar{C} Bearing.



ELEVATION

(Looking West @ Abut. #1, Looking East @ Abut. #2)
 Elevations shown for top of abutment wall are based on 1 1/2" brick & sand & slab (interior girders) + 3/4" fillet + 3'-0" beam + 3/4" Elastomeric Bearing Pad.



SECTION A-A

* Keep existing transverse reinforcing from abutment wings and dowels projecting from Footing. Sandblast to remove corrosion.

Drill and grout to provide spacing as shown. All material, including steel, and work is paid for at the set price for the bid item, "Drilling and Grouting". Minimum embedment & projection for #8 is 2'-0" and for #6 is 1'-6". Use low impact drill to minimize damage to existing concrete.

"Drill & Grout" quantity includes 104-#8 in the abutment footing and 52-#6 in the abutment wings, each abutment.

See Sh. #15 for Abutment Diaphragm Reinforcing Details.

CITY OF WICHITA
 JAMES ARMOUR, P.E., CITY ENGINEER
 13TH STREET BRIDGE OVER
 LITTLE ARKANSAS RIVER
**ABUTMENT WALL
 REINFORCING DETAILS**

PB PARSONS
 BRINCKERHOFF
 122 S. Wichita, Kansas

SCALE	DATE	DWG. NO.
	10/9/2007	35750A

K:\35750A\CADD\SHEETS\BRIDGE\13THABUTDET02.dgn
 SURV. JG, CP | PLOT CADD | DES. AH | DR. GBI | TR. CKD. BS | APP. RG