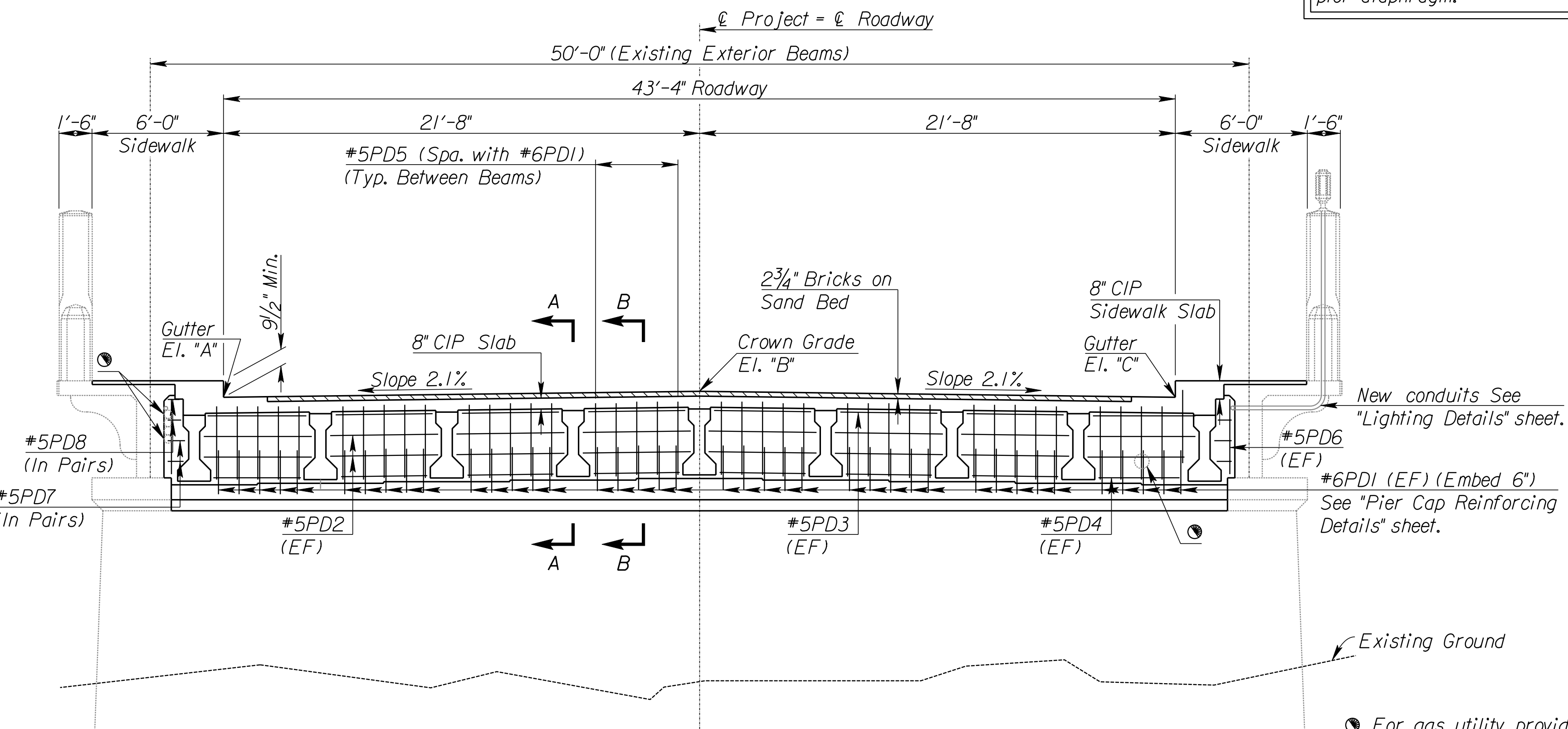
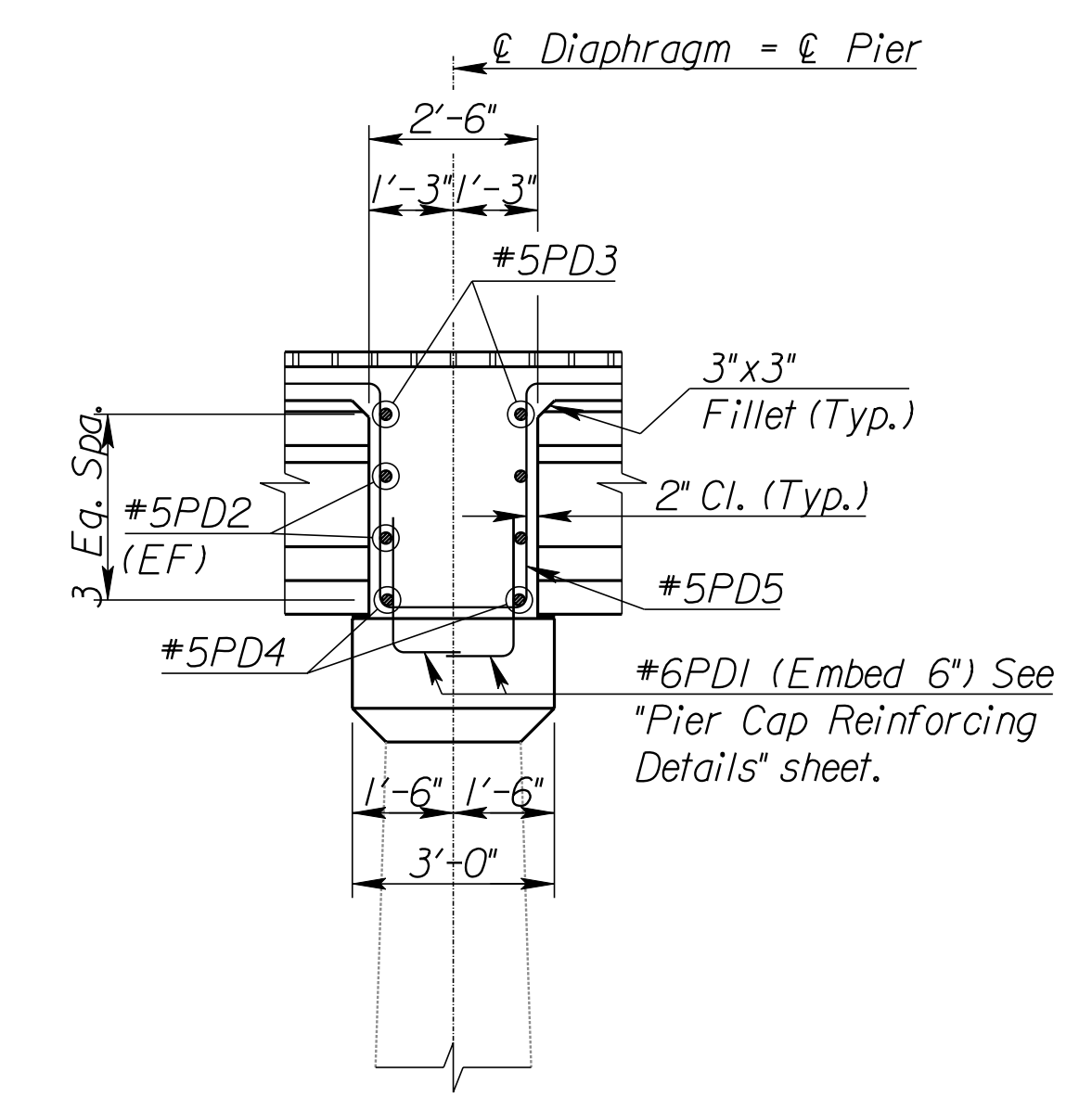
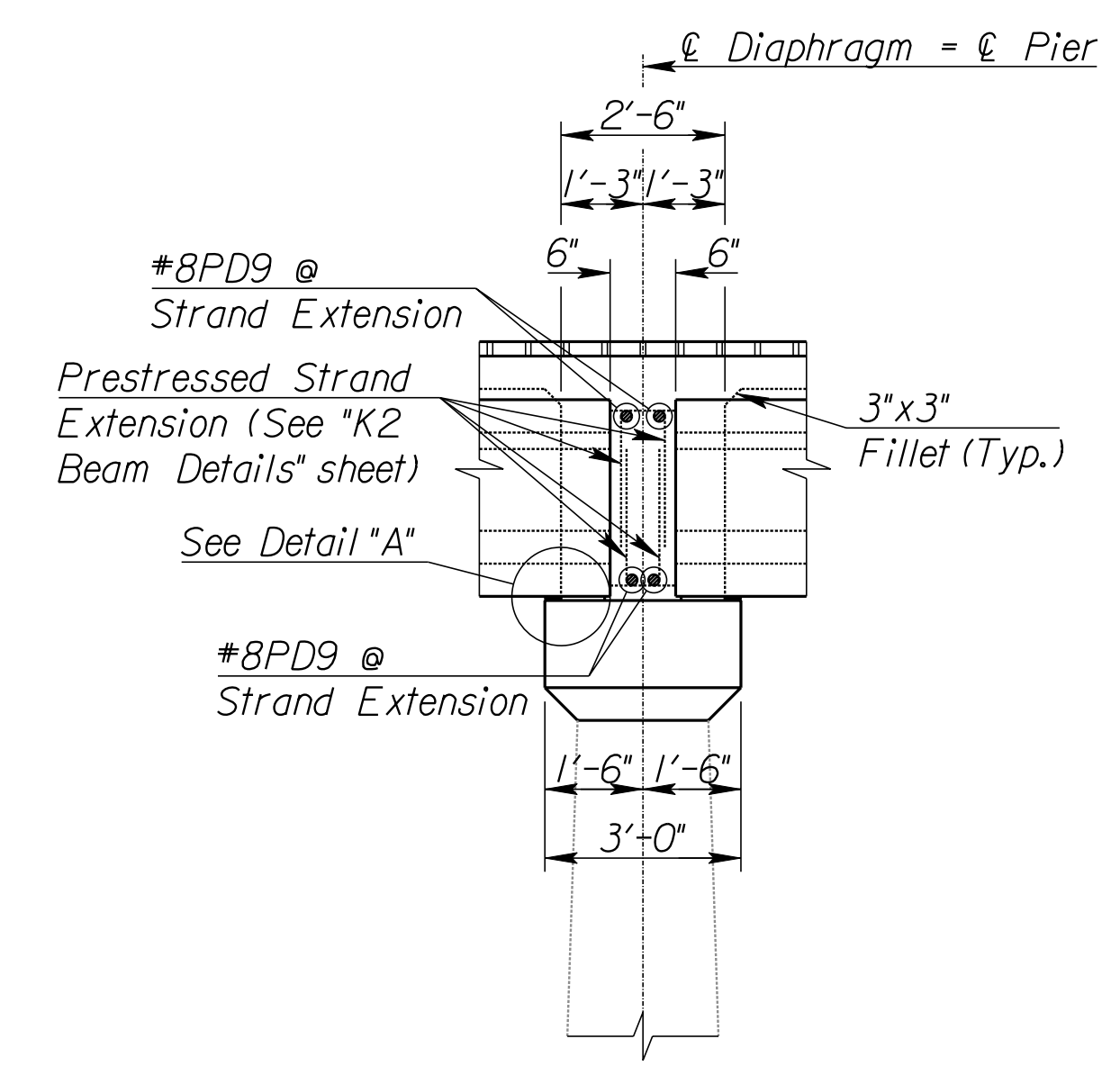
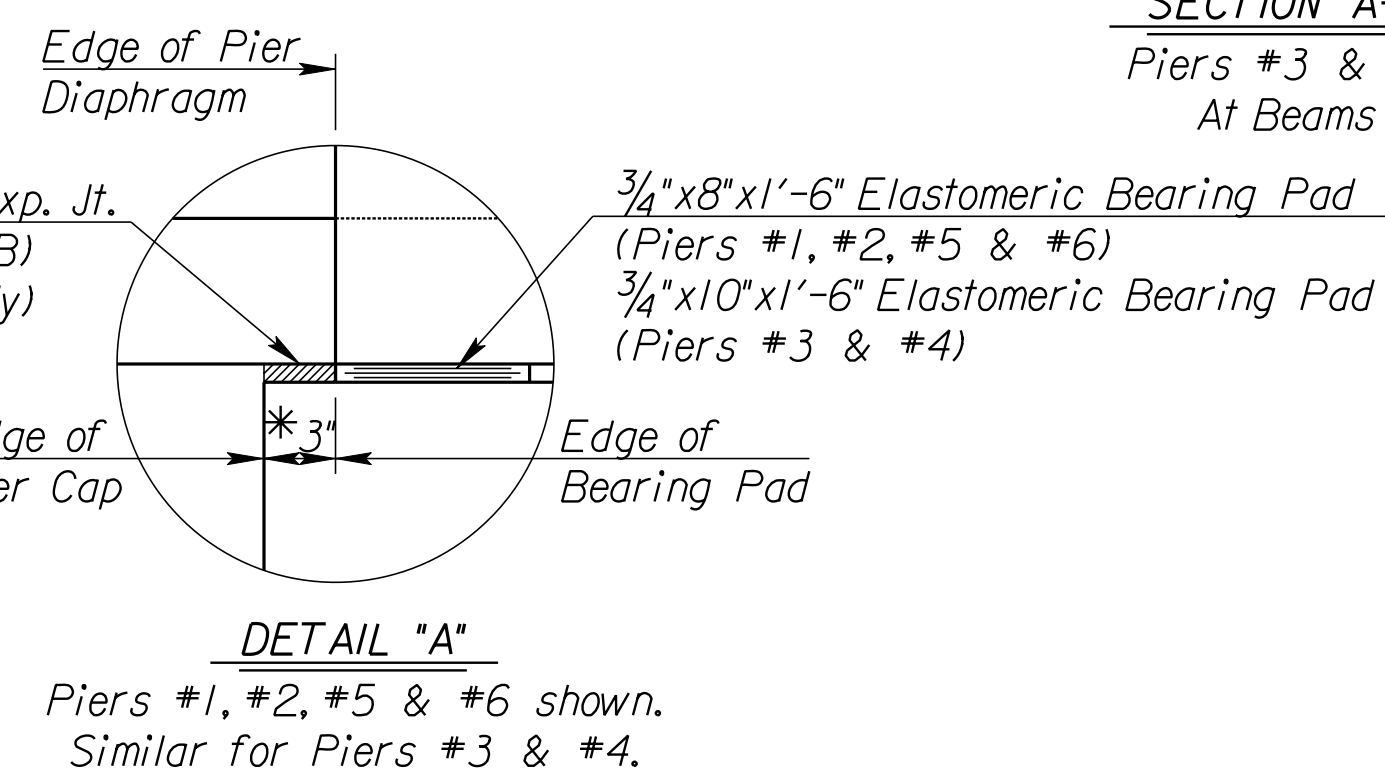
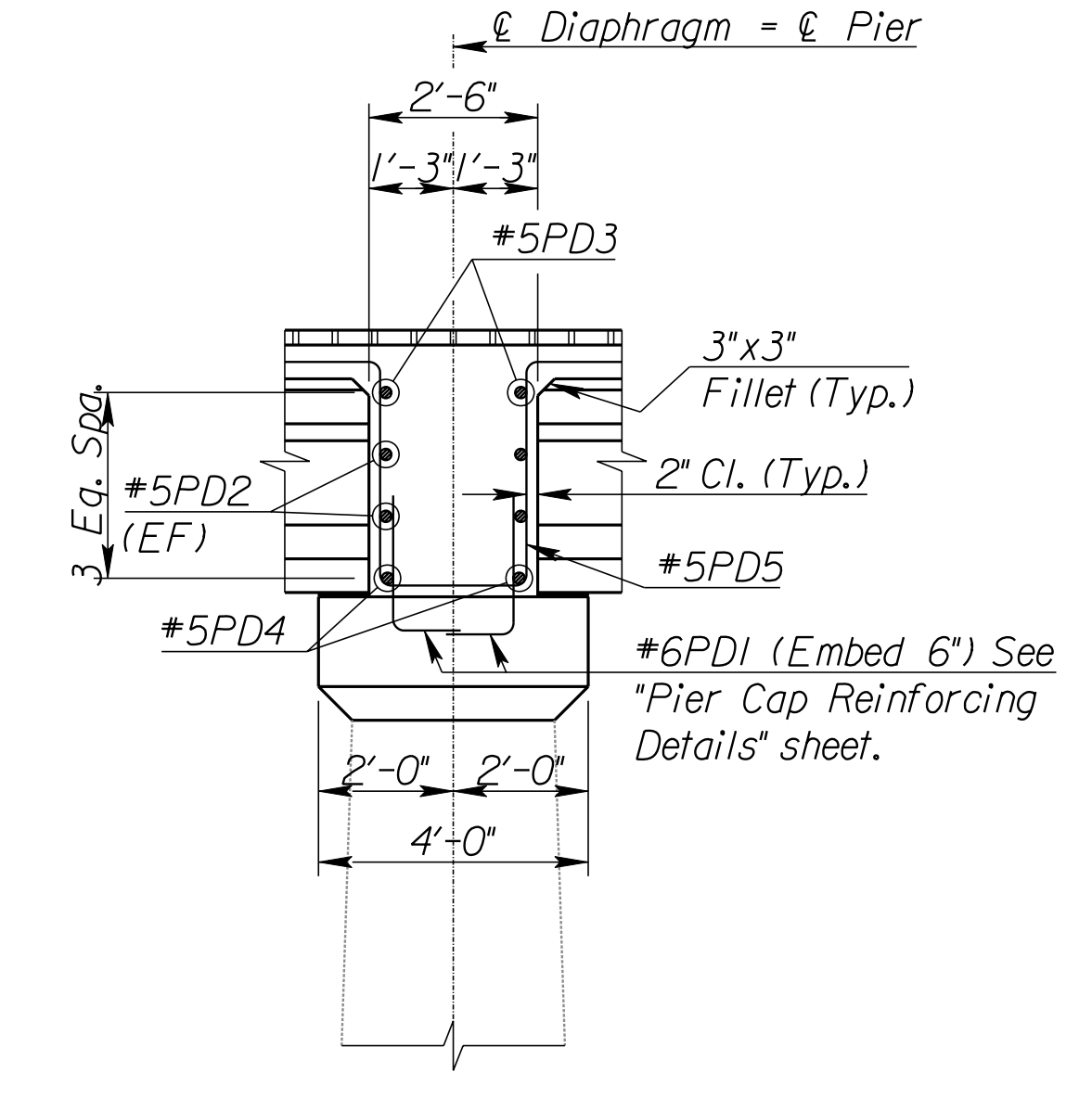
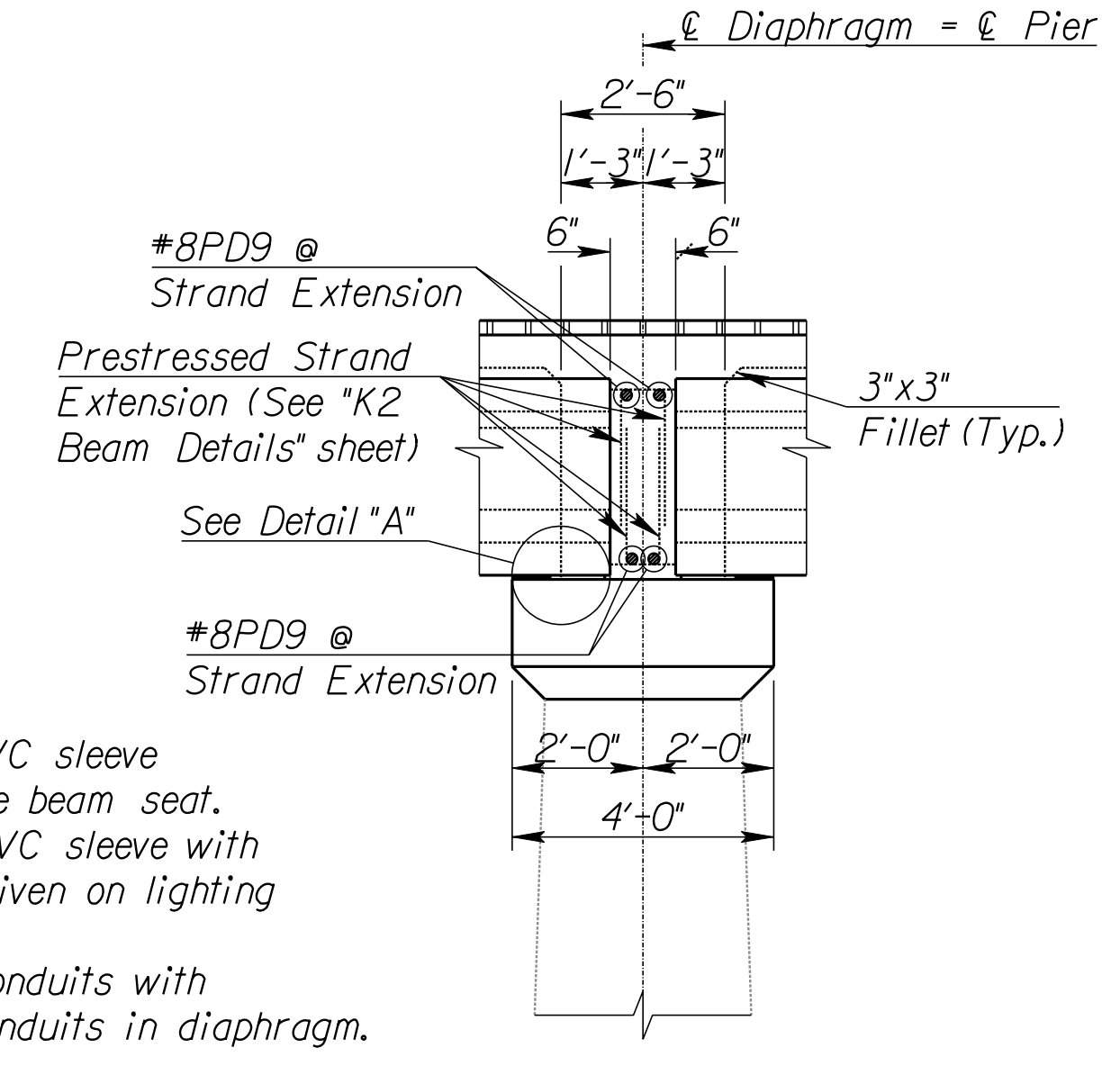


NOTE: Lighting conduit will be carried through abutment and pier diaphragm.



For gas utility, provide 14" Ø PVC sleeve in diaphragm, centered 1' above beam seat.
For lighting conduits, provide PVC sleeve with ID min. 1/2" greater than OD given on lighting shop drawings.
For Telephone conduits, wrap conduits with teflon to allow movement of conduits in diaphragm.



Loc.	Pier #1	Pier #2	Pier #3	Pier #4	Pier #5	Pier #6
El. "A"	1310.62	1310.79	1310.88	1310.88	1310.79	1310.62
El. "B"	1311.07	1311.24	1311.34	1311.34	1311.24	1311.07
El. "C"	1310.62	1310.79	1310.88	1310.88	1310.79	1310.62

See Sh. #34 for Lighting Details.
See Sh. #20 for Pier Cap Reinforcing Details.
See Sh.'s. #23-24 for K2 Beam Details.

CITY OF WICHITA
JAMES ARMOUR, P.E., CITY ENGINEER
13TH STREET BRIDGE OVER
LITTLE ARKANSAS RIVER
PIER DIAPHRAGM
REINFORCING DETAILS

SCALE: _____ DATE: 10/9/2007 DWG NO.: 35750A

K:\35750A\CADD\SHEETS\BRIDGE\13THPIERDIAO1.dgn
 SURV. JG, CP PLOT CADD DES. AH DR. GBI TR. CKD. BS APP. RG