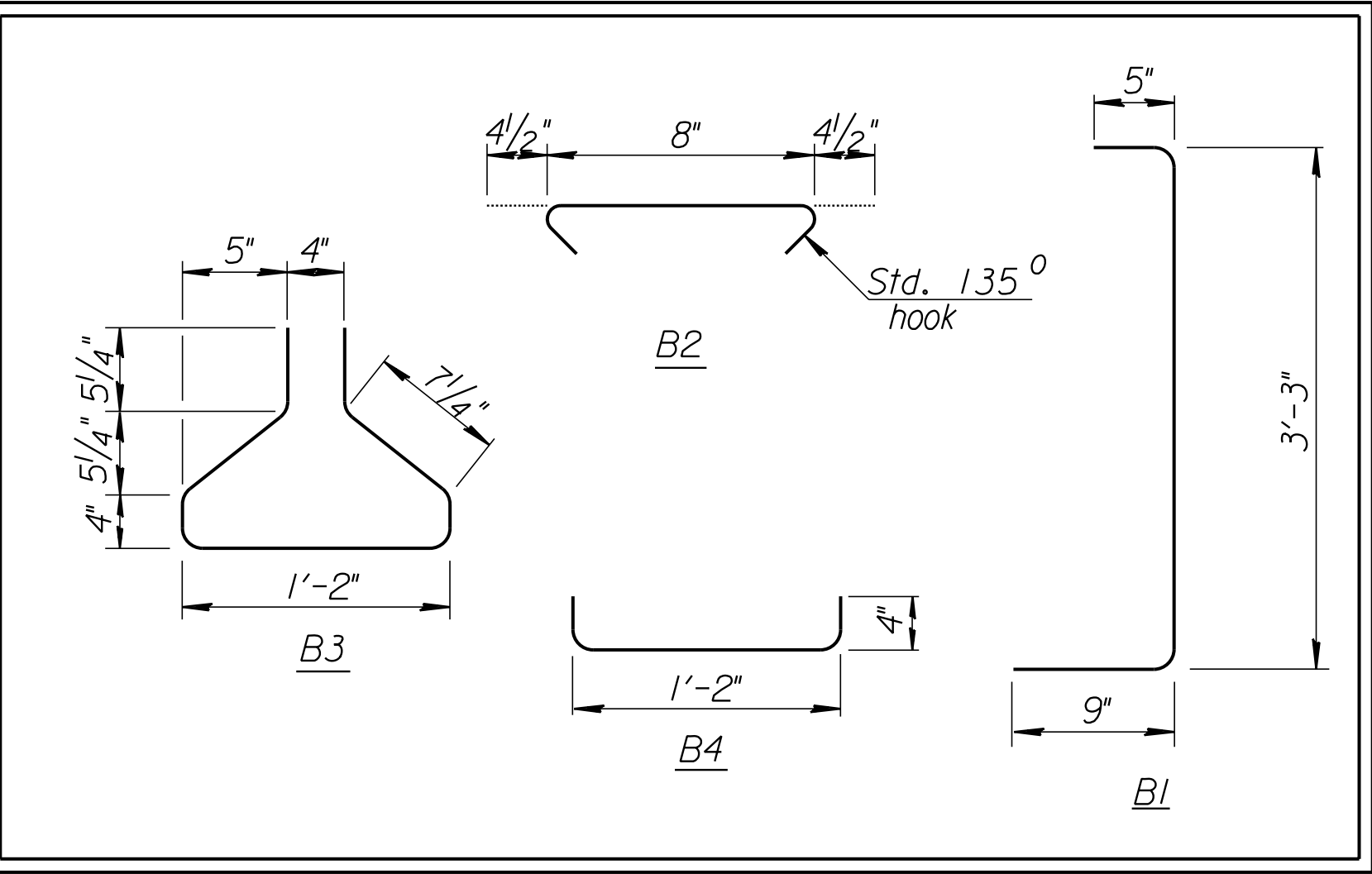
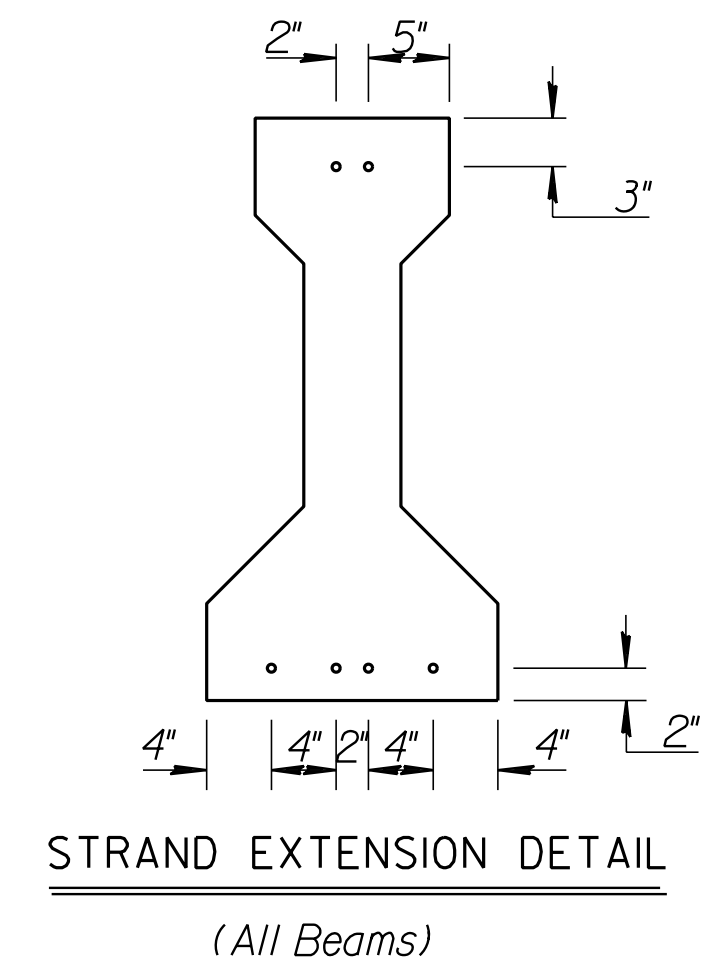


NOTE: During transportation and construction only, support beams on bearing points a maximum of 2'-0" feet from the beam end. The Fabricator shall show the proposed support locations on the shop drawings.
NOTE: Epoxy coat all bars.

BILL OF REINFORCING STEEL							
31'-2" Girder (1 Listed- 18 Req'd.) (Spans #1 & #7)							
Straight bars				Bent bars			
Mark	No.	Size	Length	Mark	No.	Size	Length
B5	2	#4	30'-10"	B1	88	#4	4'-5"
				B2	44	#4	1'-5"
				B3	28	#3	3'-11"
				B4	16	#3	1'-10"
34'-0" Girder (1 Listed- 18 Req'd.) (Spans #2 & #6)							
Straight bars				Bent bars			
Mark	No.	Size	Length	Mark	No.	Size	Length
B6	2	#4	33'-8"	B1	96	#4	4'-5"
				B2	48	#4	1'-5"
				B3	30	#3	3'-11"
				B4	18	#3	1'-10"



NOTE: Extend 6 strands 2'-6" beyond the end of the beam. Strands not shown shall be cut flush with the end of the beam. See "Strand Extension Detail".



See Sheet #24 for K2 Beam Details II.
See Sheet #27 for Temporary Diaphragm Details.
See Sheet #28 for Intermediate Diaphragm Details.

CITY OF WICHITA
JAMES ARMOUR, P.E., CITY ENGINEER
13TH STREET BRIDGE OVER
LITTLE ARKANSAS RIVER
K2 BEAM DETAILS I



K:\35750A\CADD\SHEETS\BRIDGE\13THBMD01.dgn SURV. JG, CPI PLOT CADD\DES. AH DR. GBI TR. BS APP. RG