

TYPICAL ELEVATION OF TEMPORARY DIAPHRAGMS

(Use the optional 1" holes thru the prestressed beam web only on interior beams.)
See "Framing Plan" sheet for location of Temporary Diaphragms.

Note: Use standard holes in the girder angles, horizontal long slotted holes in one end of the bent plate diaphragm, and vertical long slotted holes in the other end of the bent plate diaphragm. Use horizontal long slotted holes in one end of the angle cross-braces, and a standard hole in the other end. A plate washer is required at the slotted hole locations.

Modifications to temporary diaphragms may be required to coordinate with utility locations. Engineer shall approve any such modifications.

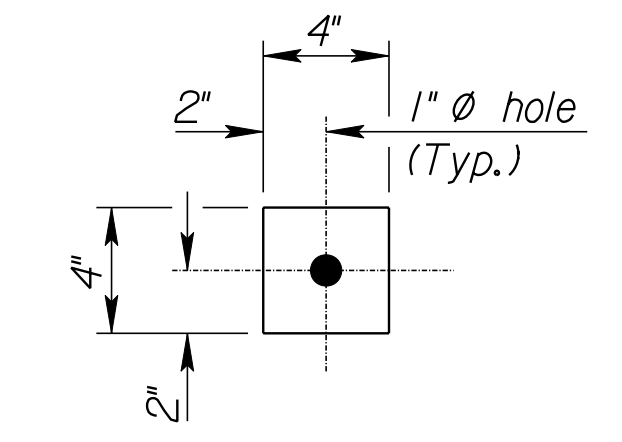
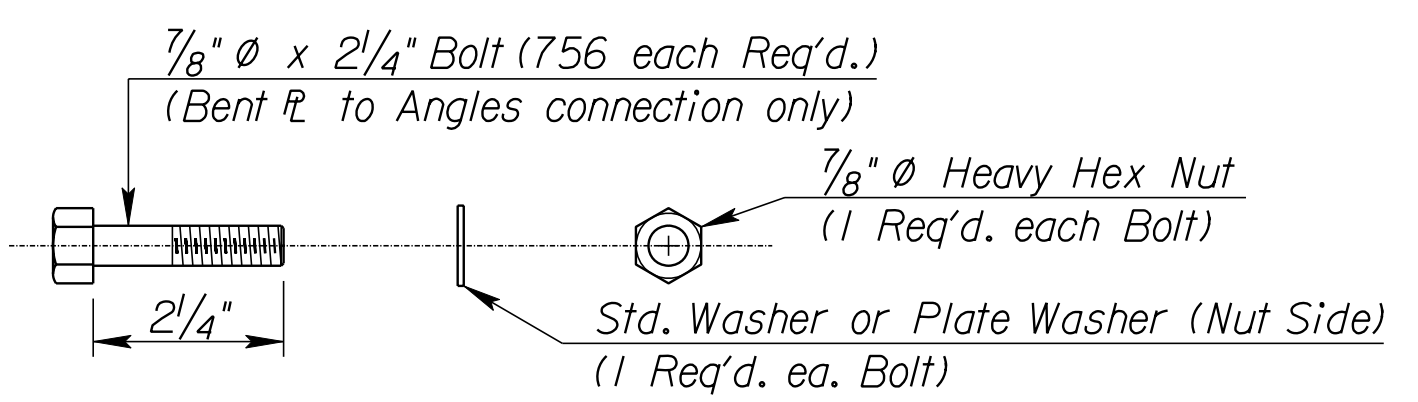
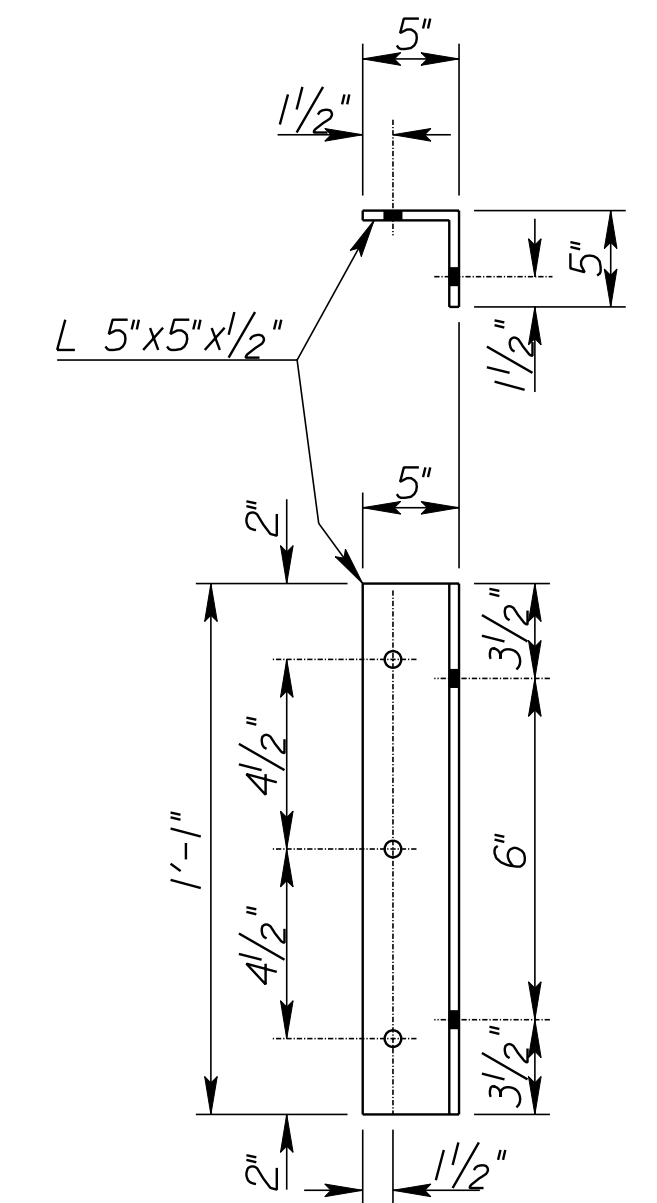
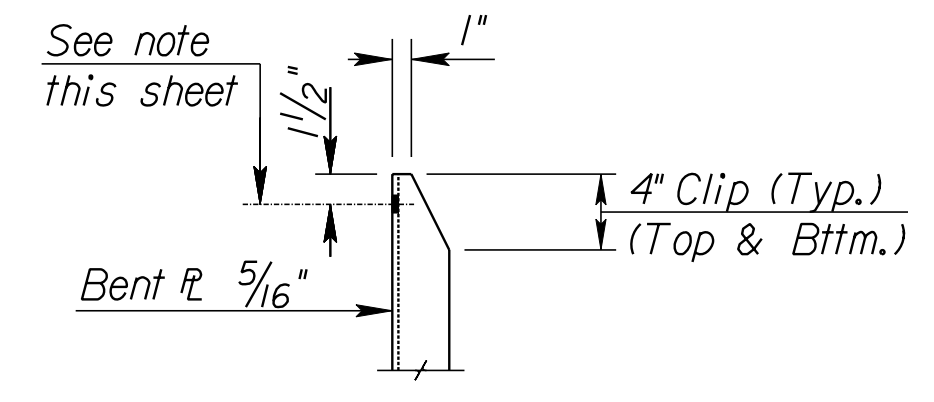


PLATE WASHER (OPTIONAL)
R 1/4"x4"x4"
(252 each Req'd.)

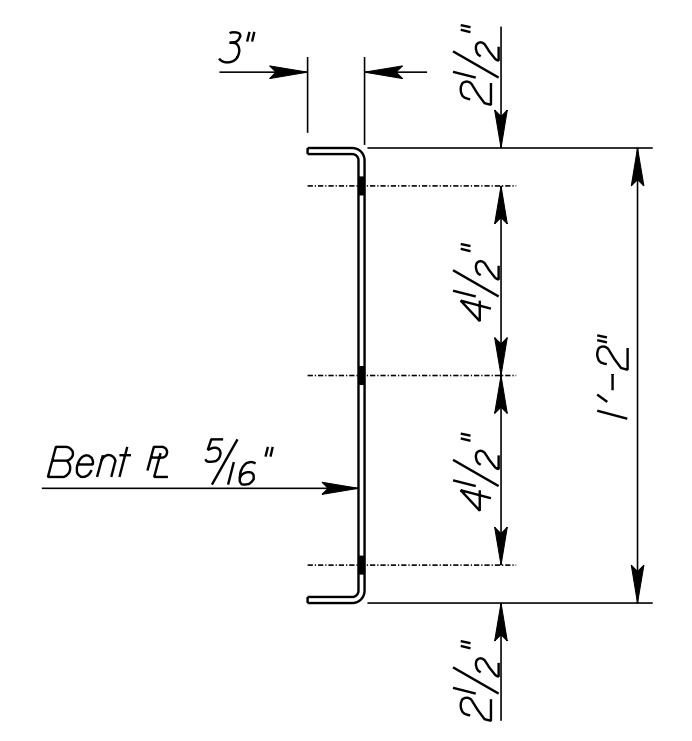


TYPICAL BOLT AT DIAPHRAGM

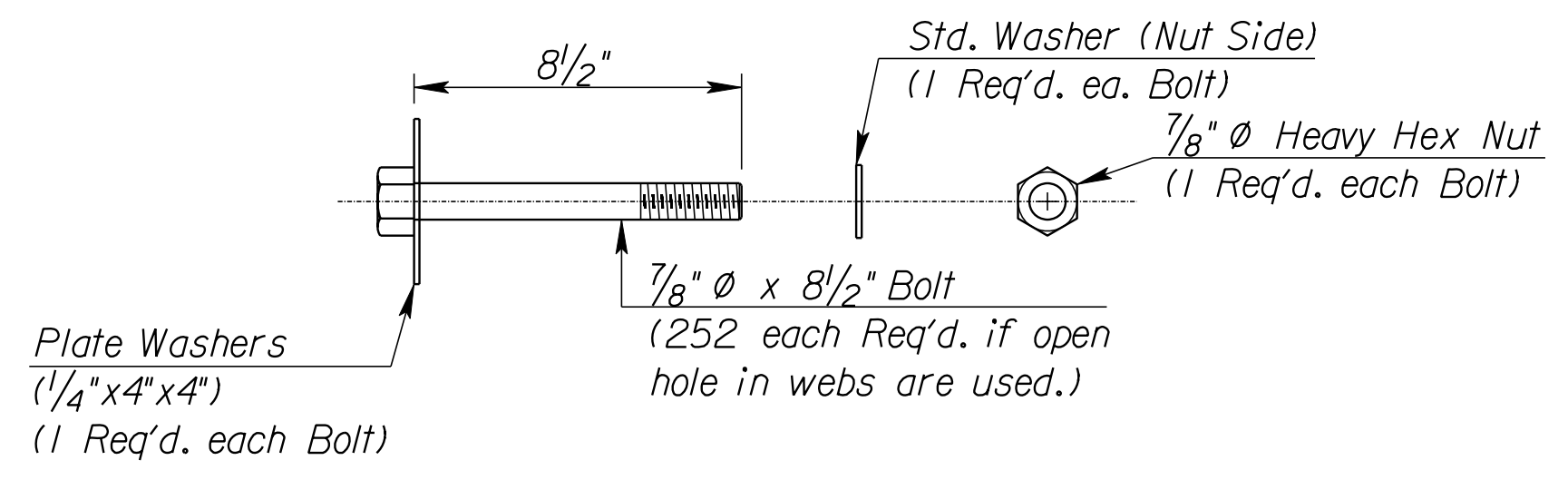


DIAPHRAGM ANGLE BRACKET
(252 each Req'd.)

Note:
1 5/16" diameter holes
for 7/8" diameter bolts.



BENT PLATE DIAPHRAGM
(126 each Req'd)



TYPICAL BOLT THRU WEB (OPTIONAL)
Interior Girder Only

TEMPORARY DIAPHRAGMS: Use ASTM A709 Gr. 36 steel for all angles and bent plates for temporary diaphragms. All bolts, nuts, and washers for fasteners shall conform to the heavy hex structural requirements of ASTM A325, Type I. Use hardened steel washers over any oversized holes. Use 5/16" plate washers over any slotted holes along with hardened washers under the turned elements. Use the turn-of-the-nut tightening method. DTI's are not required. Install the temporary diaphragms, as shown in the details, prior to placing any superstructure concrete. Leave the temporary diaphragms in place until the concrete diaphragms and the deck have cured. Remove the angles from the girders and fill the holes in the prestressed beams with an approved epoxy grout. The bent plate diaphragms, angles, nuts, bolts, and washers shall remain the property of the Contractor. Submit shop drawings of the temporary diaphragms to the City of Wichita Engineering Division for review and approval. The material, equipment, and labor necessary for the installation and removal of the temporary diaphragms, including filling the bolt holes, shall not be paid for directly, but shall be subsidiary to the bid item "Prestressed Concrete Beams (K2)".

See Sheet #26 for Framing Plan details.

CITY OF WICHITA
JAMES ARMOUR, P.E., CITY ENGINEER
13TH STREET BRIDGE OVER
LITTLE ARKANSAS RIVER
**TEMPORARY DIAPHRAGM
DETAILS**

**PB PARSONS
BRINCKERHOFF**
122 S. Wichita, Kansas

K:\35750A\CADD\SHEETS\BRIDGE\13THTEMP.dgn SURV. JG, CP | PLOT CADD | DES. AH | DR. GBI | TR. BS | APP. RG