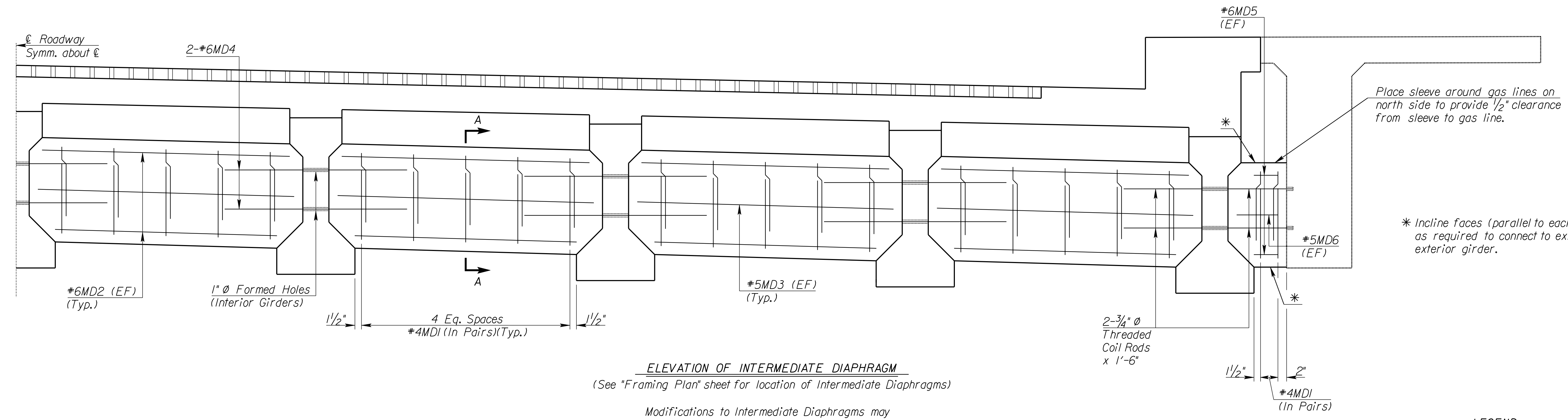


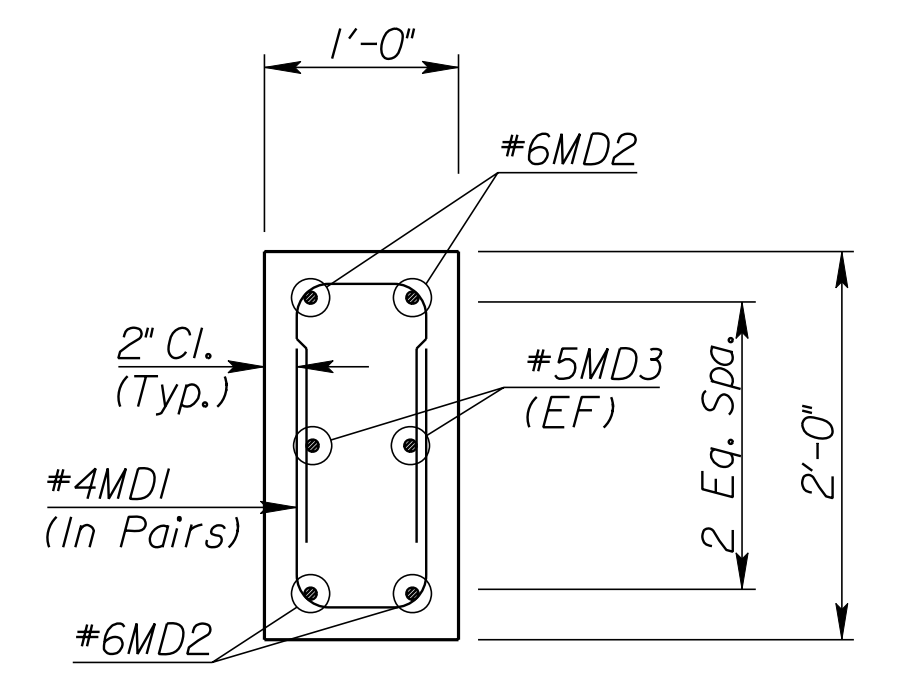
STATE	PROJECT NO.	YEAR	SHEET NO.	TOTAL SHEETS
KANSAS	TE-0284-01	2007	28	47



ELEVATION OF INTERMEDIATE DIAPHRAGM
 (See "Framing Plan" sheet for location of Intermediate Diaphragms)

Modifications to Intermediate Diaphragms may be required to coordinate with utility locations. Engineer shall approve any such modifications.

LEGEND
 EF = Each Face



SECTION A-A

INTERMEDIATE DIAPHRAGMS:
 Cure intermediate diaphragms a minimum of seven days before placing slab.

Note:
 Threaded Coil Rods (3/4" x 1'-6") and Threaded Coil Inserts shall be subsidiary to the bid item "Prestressed Concrete Beam (K2)."

K:\35750A\CADD\SHEETS\BRIDGE\13THINT.dgn
 SURV. JG, CP | PLOT CADD | DES. AH | DR. GBI | TR. CKD. BS | APP. RG

See Sheet #26 for Framing Plan details.

CITY OF WICHITA
 JAMES ARMOUR, P.E., CITY ENGINEER
 13TH STREET BRIDGE OVER
 LITTLE ARKANSAS RIVER
**INTERMEDIATE DIAPHRAGM
 DETAILS**

**PB PARSONS
 BRINCKERHOFF**
 122. Wichita, Kansas

SCALE _____ DATE 10/9/2007 DWG NO. 35750A