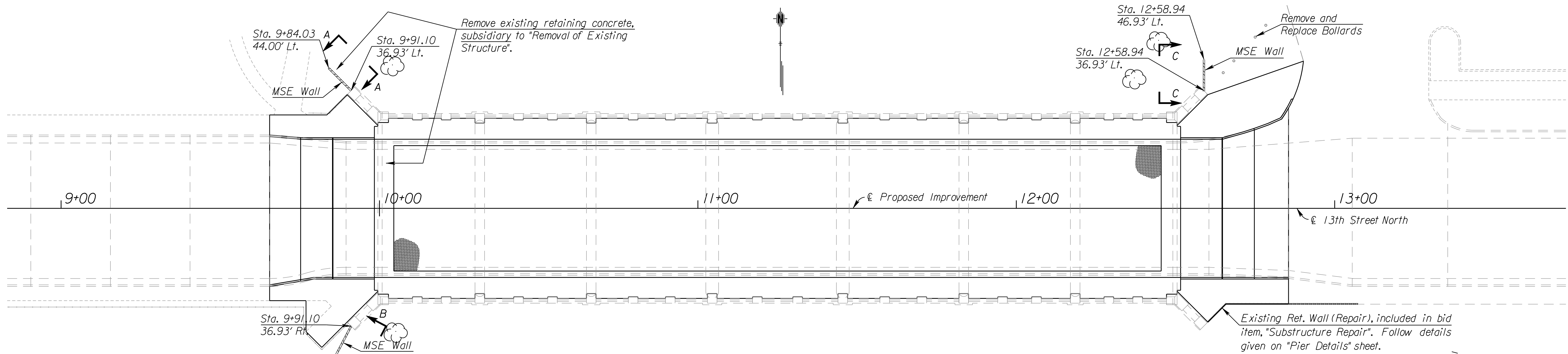
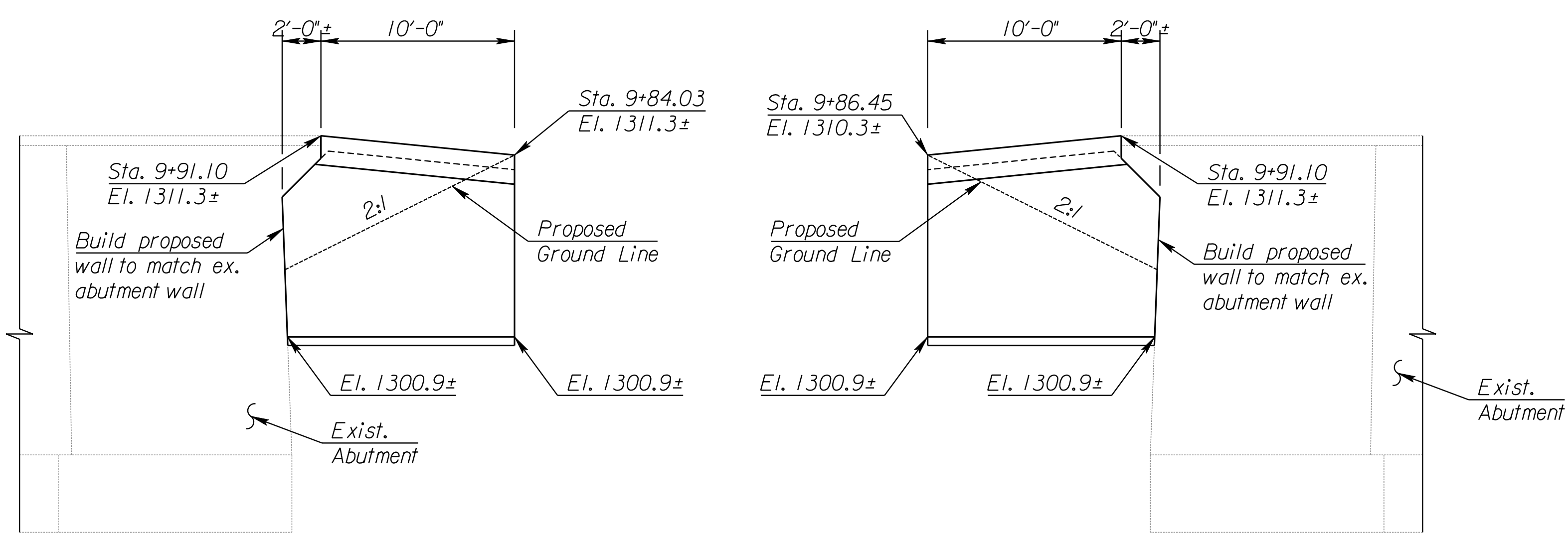


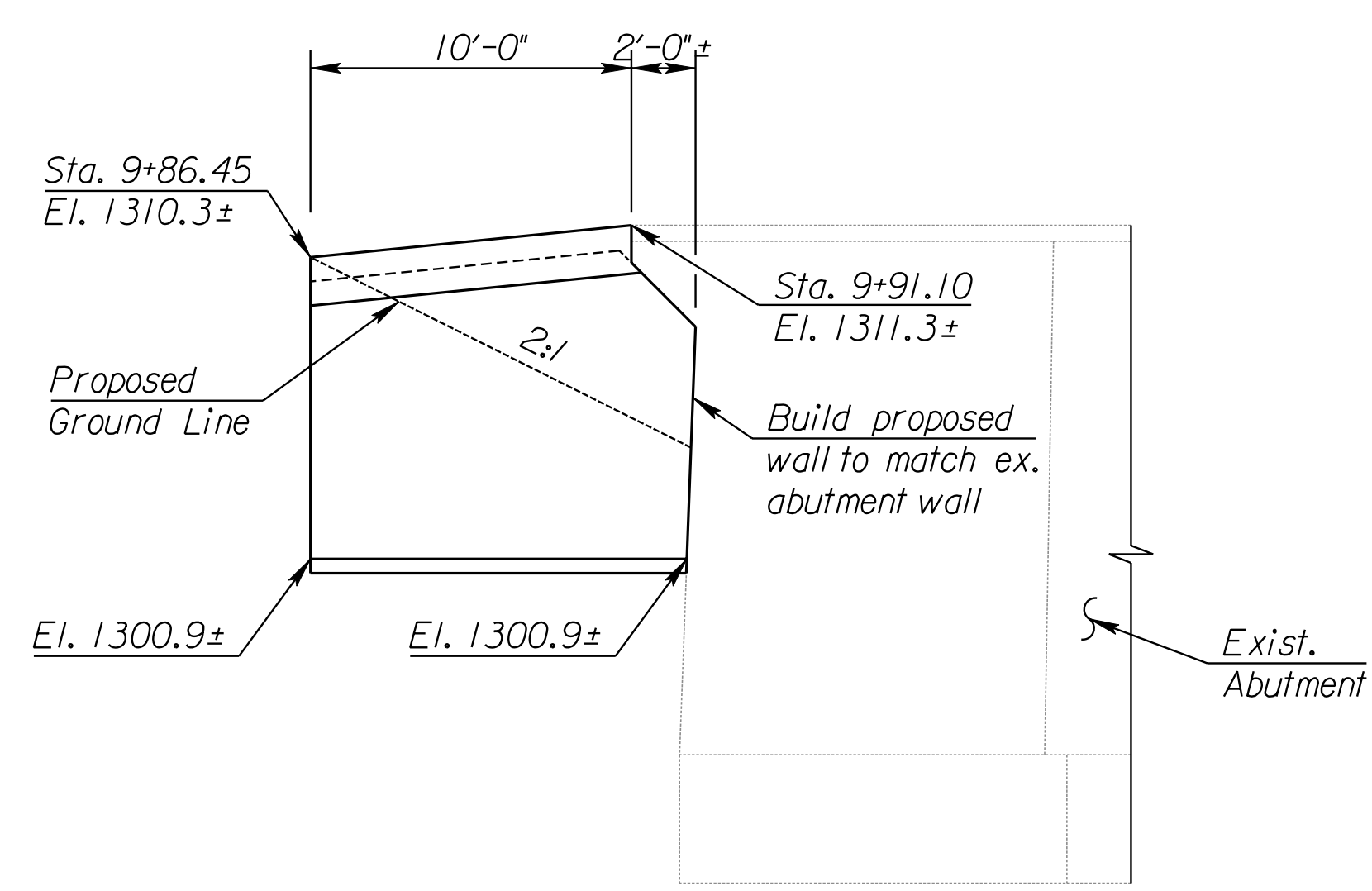
STATE	PROJECT NO.	YEAR	SHEET NO.	TOTAL SHEETS
KANSAS	TE-0284-01	2007	39	47



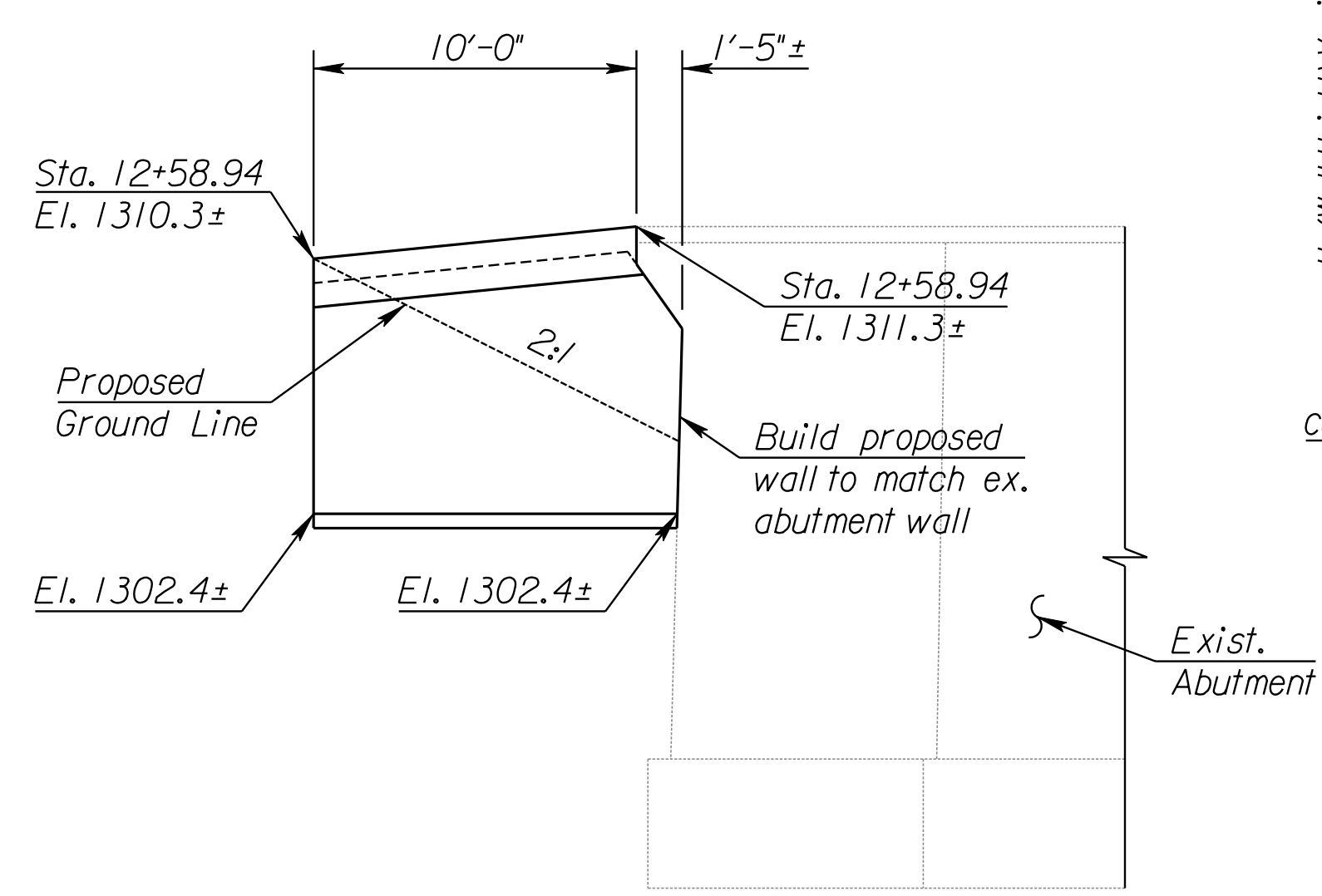
PLAN OF RETAINING WALL LAYOUT



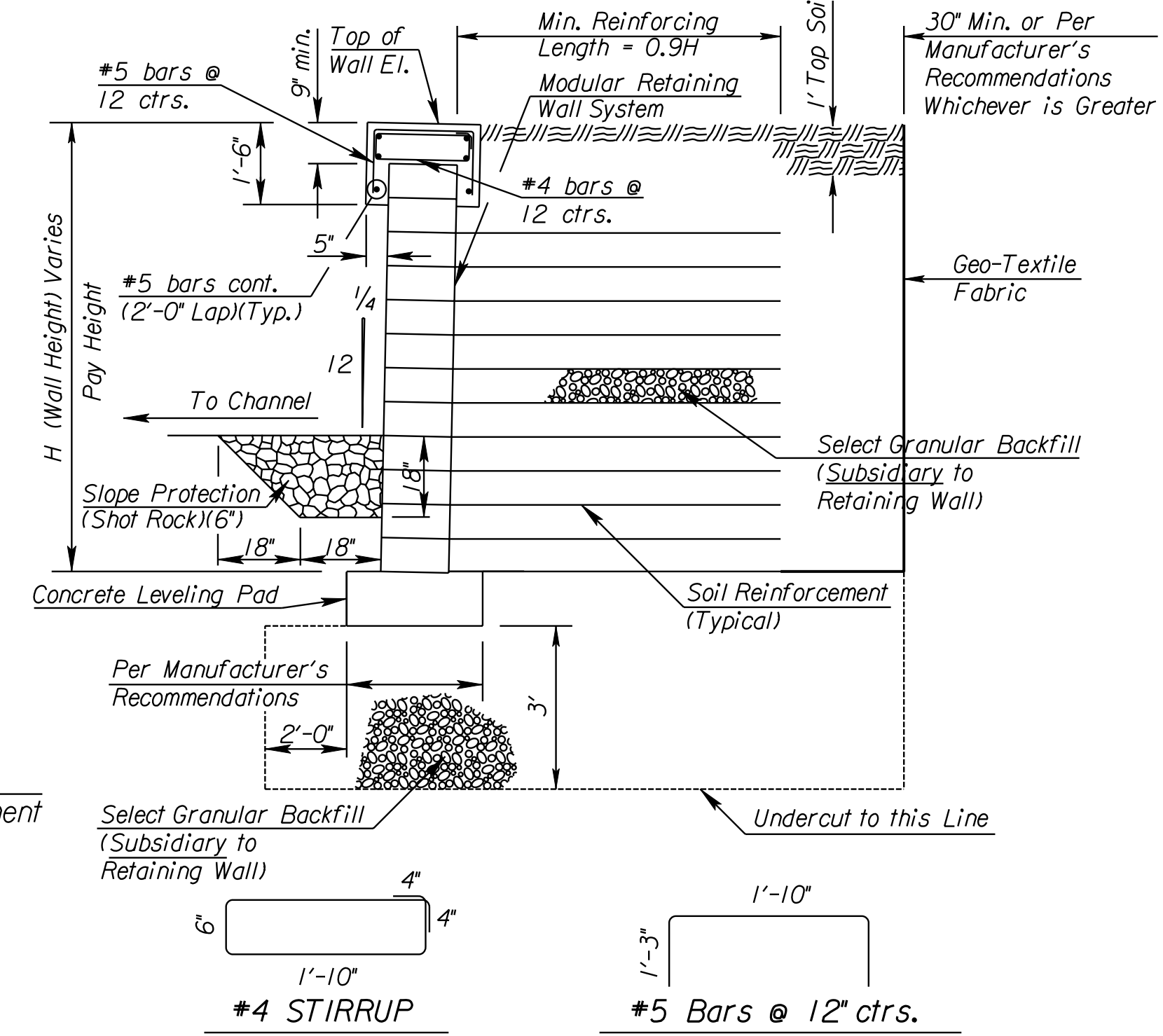
ELEVATION OF RETAINING WALL
View A-A
Northwest Quadrant



ELEVATION OF RETAINING WALL
View B-B
Southwest Quadrant

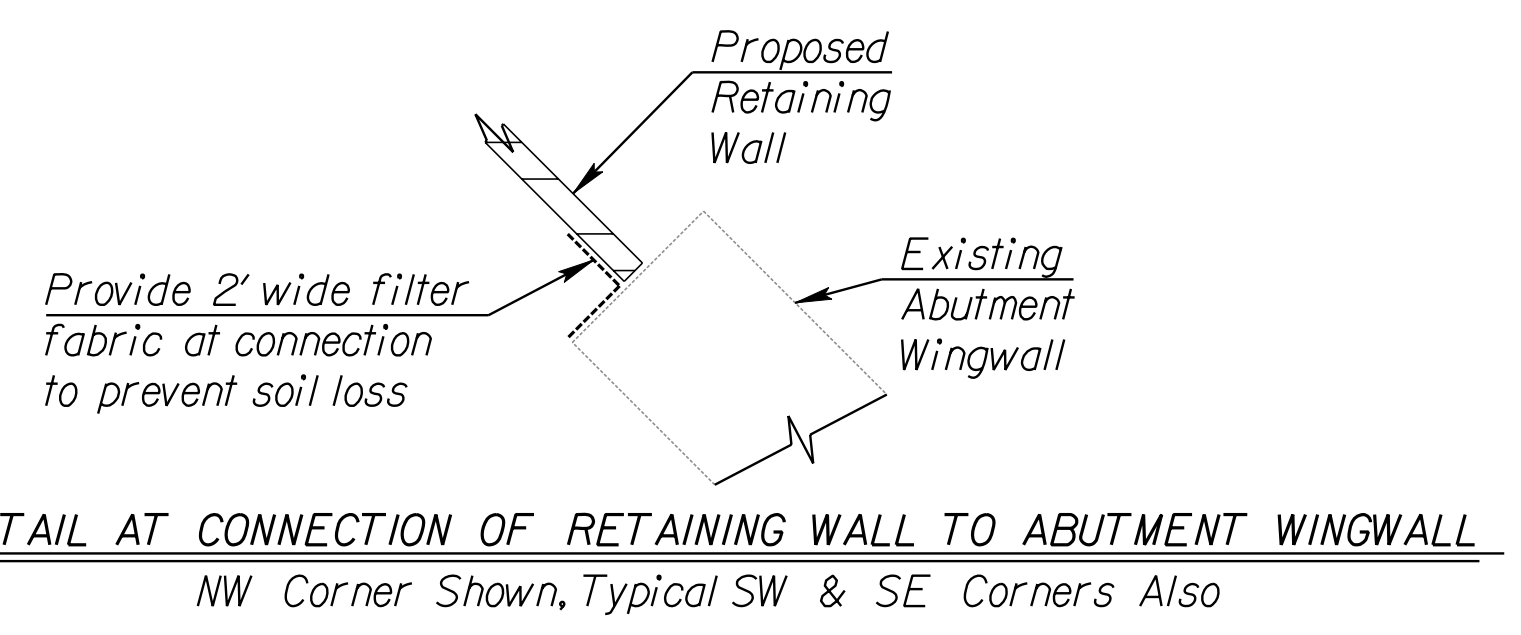


ELEVATION OF RETAINING WALL
View C-C
Northeast Quadrant



TYPICAL RETAINING WALL SECTION

The concrete leveling pad, select granular backfill, geosynthetic reinforcement, coping concrete and reinforcing are subsidiary to "Retaining Wall (**)". Modular block MSE manufacturer's coping may be used in lieu of the cast-in-place concrete coping shown if it provides a rigid connection to the MSE Wall (i.e., cannot be removed by vandals) and if shop drawings detail a connection for the handrail to the wall.



DETAIL AT CONNECTION OF RETAINING WALL TO ABUTMENT WINGWALL
NW Corner Shown, Typical SW & SE Corners Also

CITY OF WICHITA
JAMES ARMOUR, P.E., CITY ENGINEER
13TH STREET BRIDGE OVER
LITTLE ARKANSAS RIVER
RETAINING WALL
DETAILS

PB PARSONS
BRINCKERHOFF
122 S. Wichita, Kansas

See Sh. #19 for Pier Details.

SCALE	DATE 10/9/2007	DWG. NO. 35750A
-------	----------------	-----------------

K:\35750A\CADD\SHEETS\RETAININGWALL\13THRW2.dgn
 SURV. JG, CP PLOT CADD DES. AH DR. GBI TR. CKD. BS APP. RG