

GENERAL NOTES

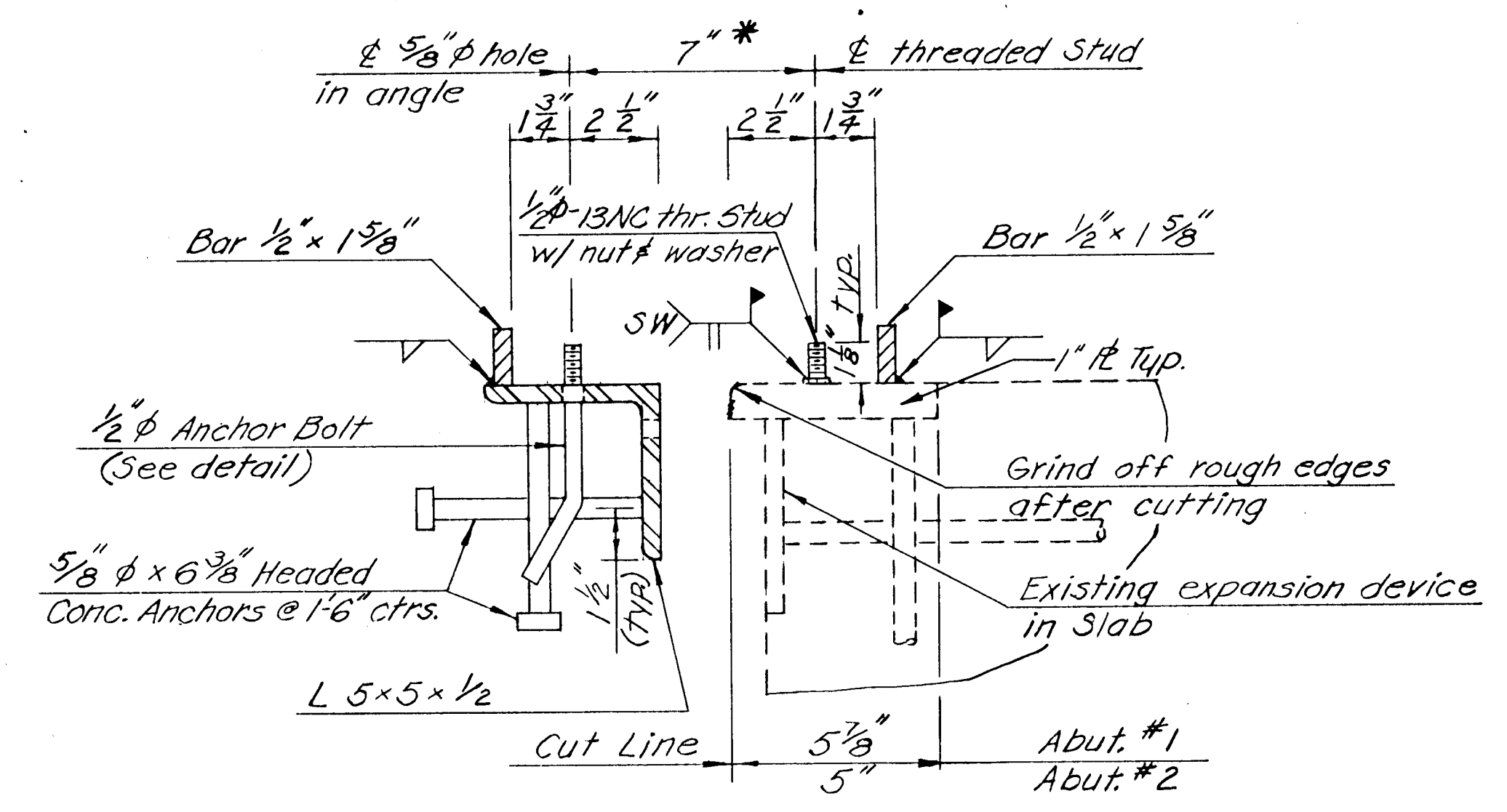
STRIP SEAL ASSEMBLY: This item consist of furnishing and installing the "Strip Seal Assembly" including all materials needed to properly anchor and protect the strip seal assembly as shown on the plans and according to manufacturer's recommendations. Payment shall be made at the contract unit price bid per linear foot for "Strip Seal Assembly" measured along the top surface of the Seal including that portion in the median and curbs. The Strip Seal device shall be the Acme Trojan (TR300) as manufactured by the Acme Highway Products, Corp. Type II, or approved equal.

STRUCTURAL STEEL: Structural Steel shall conform to ASTM A-36 unless otherwise noted. The structural steel armoring including anchor studs, shall not be paid for directly, but shall be subsidiary to "Strip Seal Assembly."

WELDS: All welds shall be 1/4" unless otherwise noted.

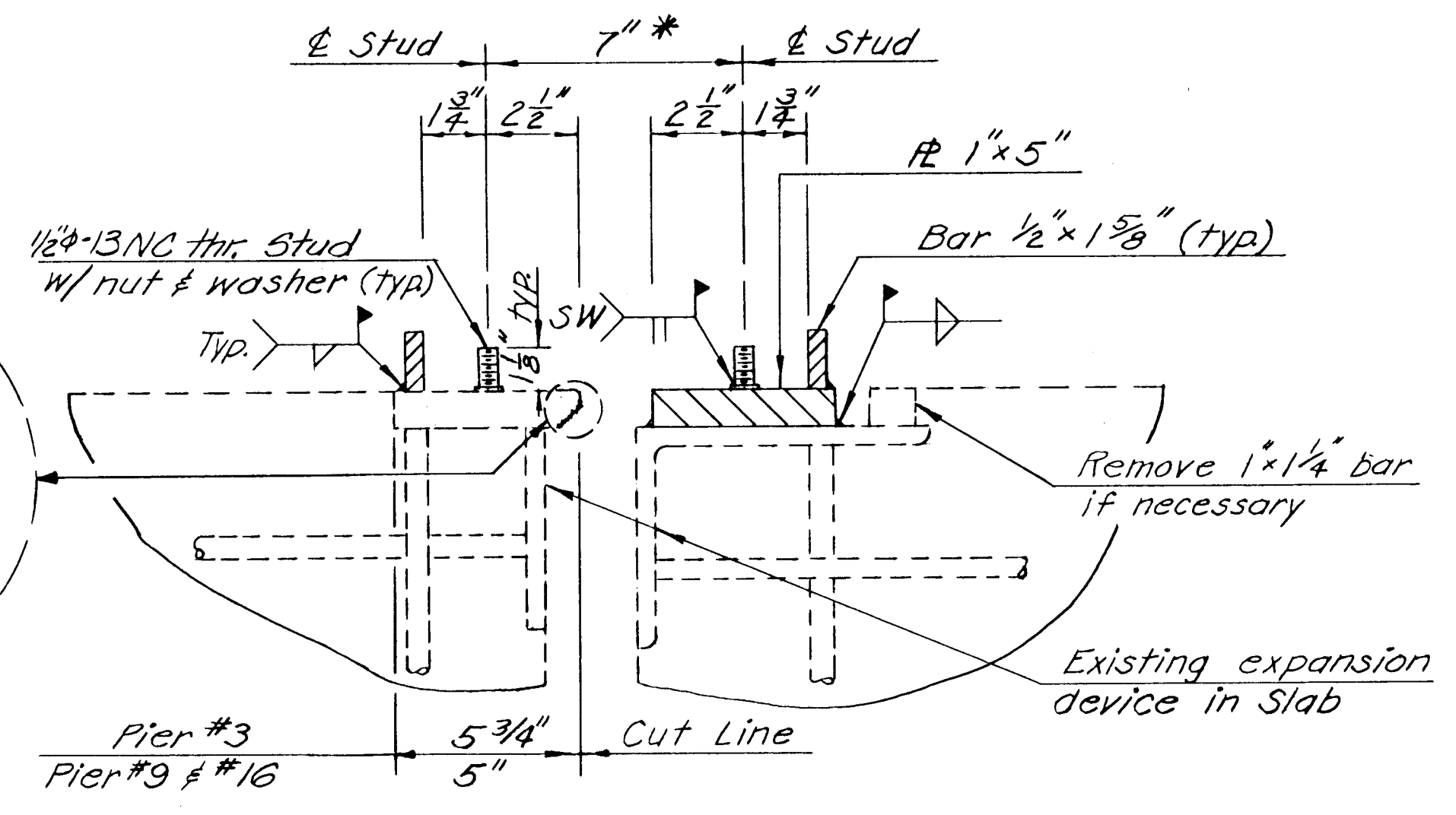
INSTALLATION: No splicing of the strip seal gland will be permitted. It shall be installed in one continuous length from parapet to parapet.

PAINTING: The structural steel armoring accessible after installation shall be painted. Paint shall conform to the Basic Lead Silico Chromate System.

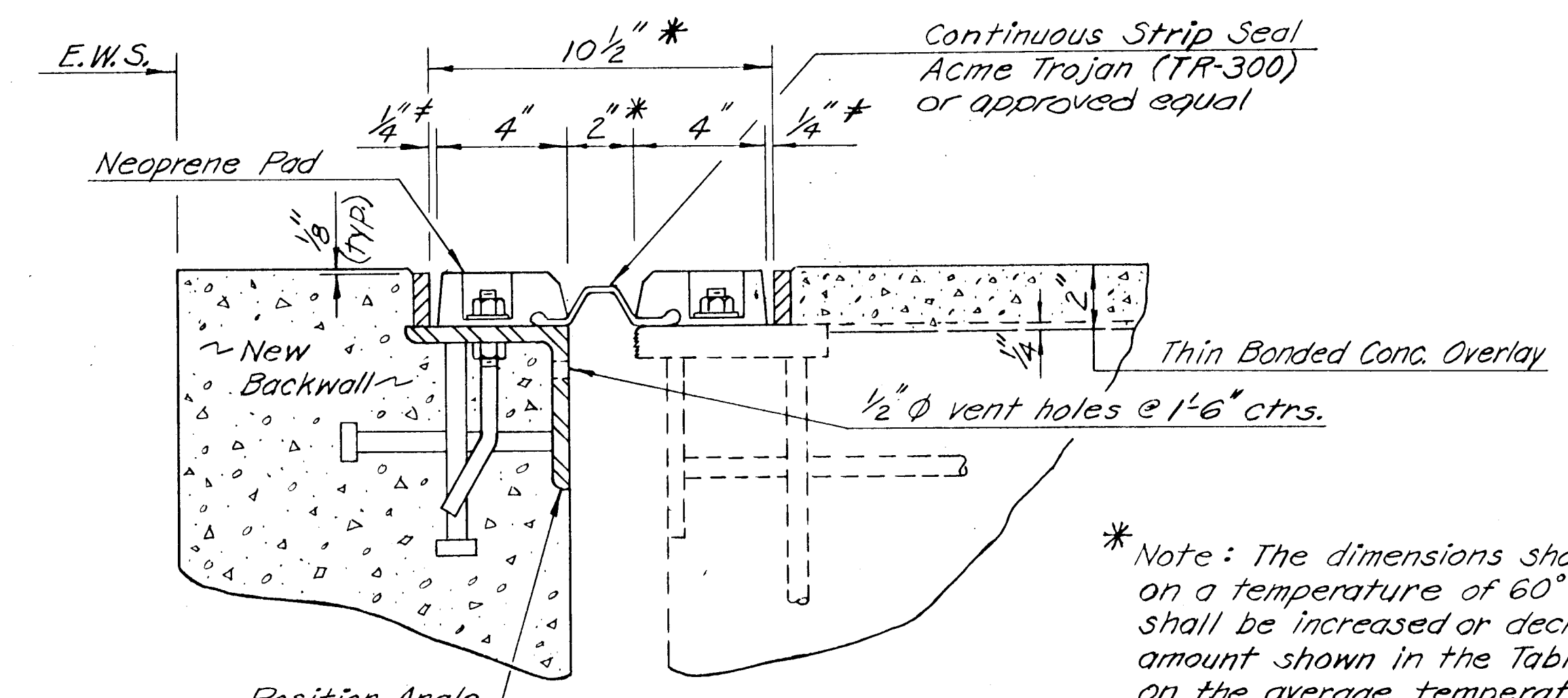


Section Showing Preparatory Work
(Section Perpendicular to & Abut.)

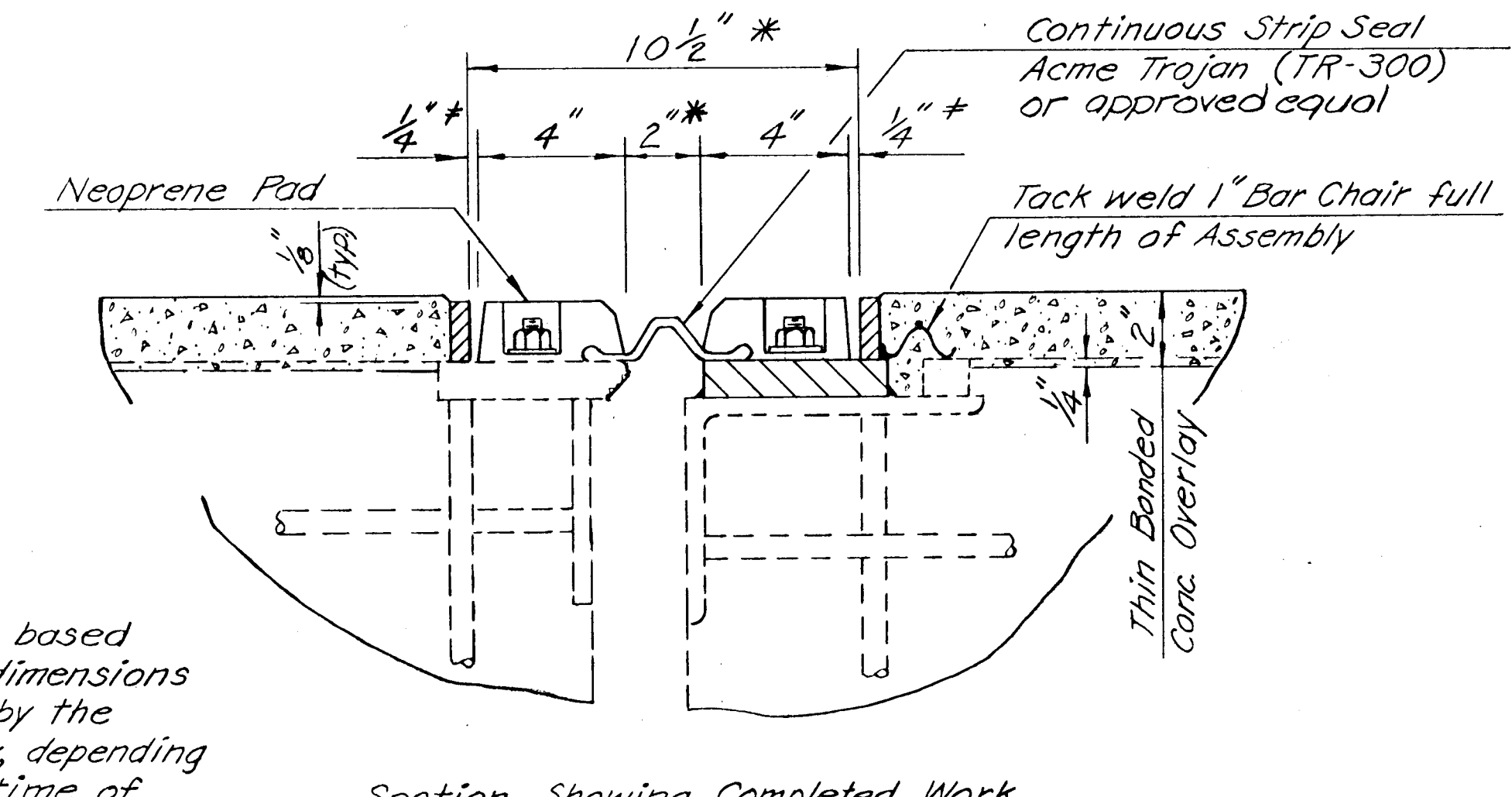
* The 1/4" gap and the bolt wells shall be filled with a flexible epoxy sealant as recommended by the manufacturer.



Section Showing Preparatory Work
(Section Perpendicular to & Pier)



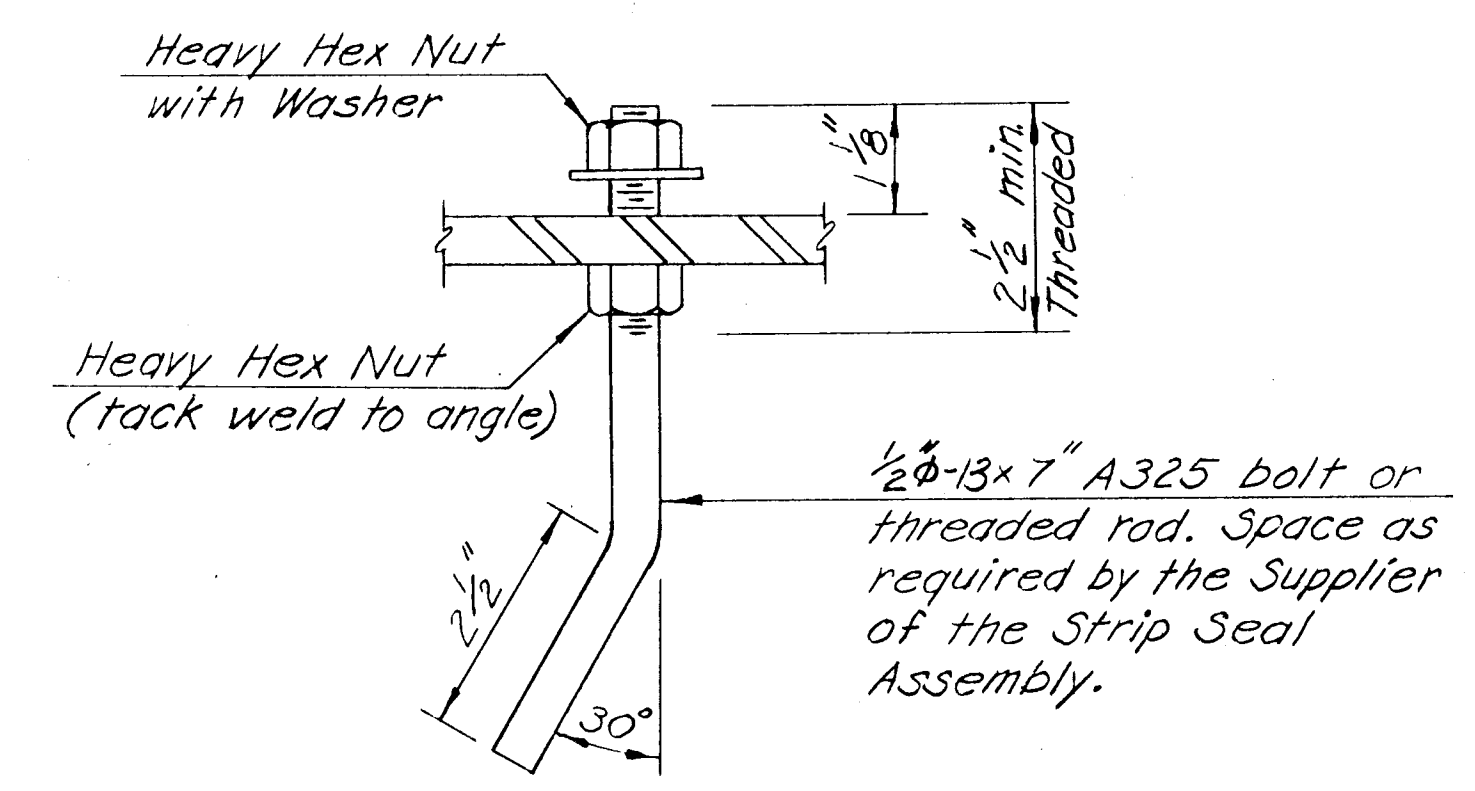
Section Showing Completed Work
SECTION THRU ABUTMENT EXPANSION DEVICE
(Section Perpendicular to & Abut.)



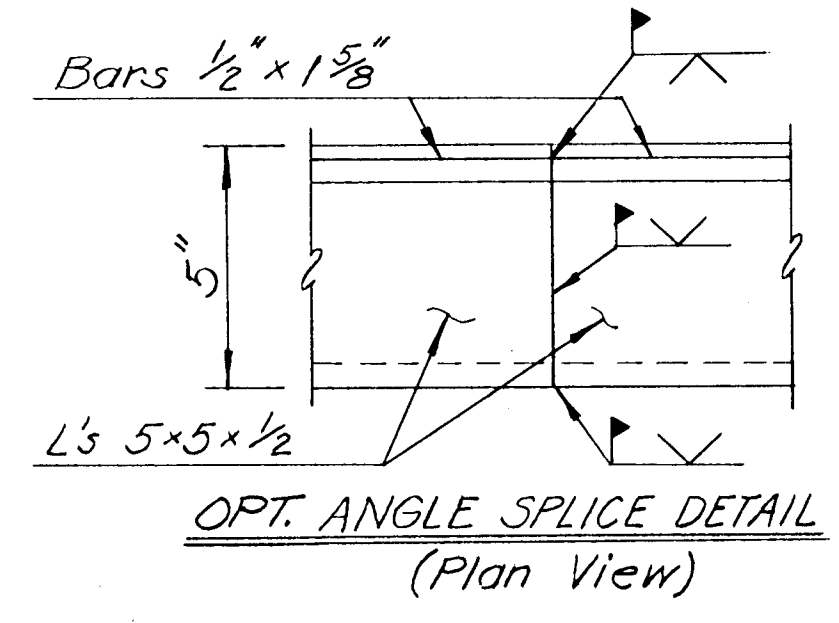
Section Showing Completed Work
SECTION THRU PIER EXPANSION DEVICE
(Section Perpendicular to & Pier)

* Note: The dimensions shown are based on a temperature of 60°F. The dimensions shall be increased or decreased by the amount shown in the Table below, depending on the average temperature at time of installation.

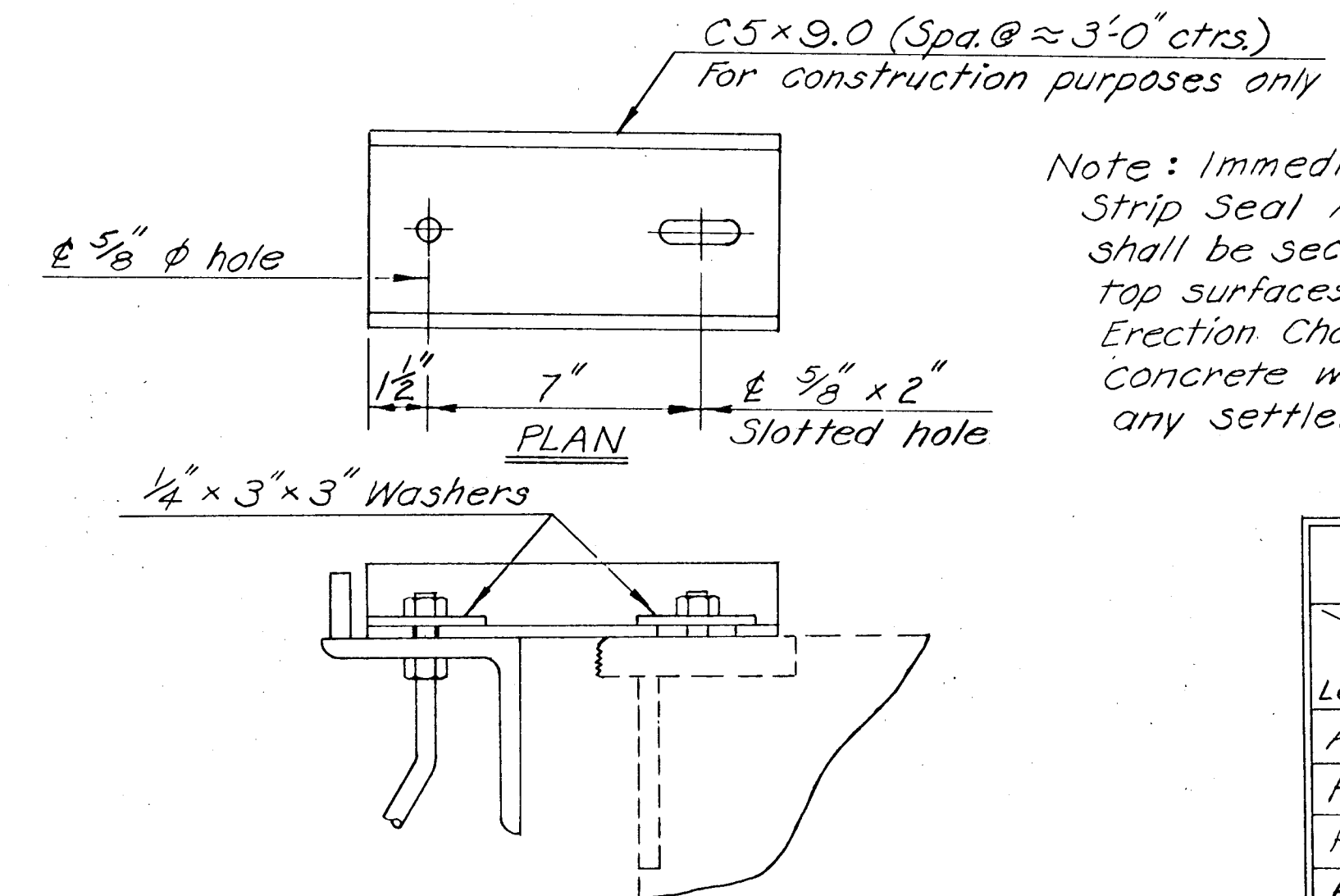
GAP ADJUSTMENT TABLE					
Temp °F	100	80	60	40	20
Abut #1	-1/4"	-1/8"	0"	+1/8"	+1/4"
Pier #3	-1/8"	-1/16"	0"	+1/16"	+1/8"
Pier #9	-1/4"	-5/8"	0"	+5/8"	+1 1/4"
Pier #16	-1"	-1/2"	0"	+1/2"	+1"
Abut #2	-1/2"	-1/4"	0"	+1/4"	+1/2"



ANCHOR BOLT DETAIL



OPT. ANGLE SPLICE DETAIL
(Plan View)



SECTION SHOWING ERECTION CHANNEL

Note: Immediately prior to placing concrete around the Strip Seal Assembly Armoring, the Erection Channels shall be securely bolted to the Armoring so that both top surfaces of the Armoring are in the same plane. The Erection Channels shall be removed as soon as the concrete will support the Armoring without allowing any settlement or tilting.

** Subsidiary Item

SUMMARY OF QUANTITIES		REVISIONS	
Item	Strip Seal Assembly (Lin. Ft.)	Structural Steel** (Lbs.)	DATE
Abut #1	67.2	1,340	
Pier #3	66.5	1,290	
Pier #9	66.5	1,290	
Pier #16	61.7	1,180	
Abut #2	61.6	1,210	
Total	323.5	6,310	

KANSAS DEPARTMENT OF TRANSPORTATION
Br. No. 54-87-25.80 Bridge Repair

STRIP SEAL ASSEMBLY

Proj. No. 54-87-5942(2) Sedgwick Co.

DESIGNED: RAM	SCALE	APP'D
DESIGN CK: SGB	DETAIL CK: SGB	QUANTITIES SGB
		TRACED
		TRACE CK.